

IO-360-C1G6 Engine Illustrated Parts Catalog

July 2016

PC-IO-360-C1G6 (Supersedes PC-306-15)

LYCOMING[™]

© 2016

652 Oliver Street
Williamsport, PA 17701

IO-360-C1G6 Engine Illustrated Parts Catalog

Lycoming Part Number: PC-IO-360-C1G6 (Supersedes PC-306-15)

For additional information:

Mailing address:

Lycoming Engines
652 Oliver Street
Williamsport, PA 17701 U.S.A.

Phone:

Factory: U.S. and Canada toll free: +1(800) 258-3279
International Customers: +1(570) 323-6181

Lycoming's regular business hours are Monday through Friday from 8:00 A.M. through 5:00 P.M. Eastern Time (-5 GMT)

Visit us online at:

www.lycoming.com

The Lycoming logo is displayed in a bold, italicized, sans-serif font. The word "LYCOMING" is in all caps, followed by a small trademark symbol (TM).

©2016 Lycoming. All Rights Reserved.

Lycoming and "Powered by Lycoming" are trademarks or registered trademarks of Lycoming.

Lycoming Engines, a division of AVCO Corporation.

All brand and product names referenced in this publication are trademarks or registered trademarks of their respective companies.

This page intentionally left blank.

Table of Contents

<u>Subject</u>	<u>Chapter - Section</u>	<u>Page</u>
Frontal		
Record of Revisions		iii
Table of Contents		v
Introduction		vii
Abbreviations and Acronyms		xi
Oversize and Undersize Part Listing		xiii
Electrical Power	24-00	
AC Generation	24-20	
1. Alternator Attaching Parts		0-1
Reciprocating Engine	72-00	
Power Section	72-20	
1. Crankcase Assembly		2-3
2. Crankcase Related Parts		4-5
3. Crankshaft Assembly and Related Parts		6-9
4. Crankshaft Idler Gears, Tachometer Drive, and Camshaft		10-11
5. Crankcase Attaching Parts		12-13
Cylinder Section	72-30	
1. Connecting Rods, Pistons, and Ring Assemblies		14-15
2. Cylinder Assembly		16-17
3. Valve Assembly and Related Parts		18-21
4. Cylinder Related Parts		22-23
5. Cylinder Head Drain Tubes, Intercylinder Cooling Baffles, and Rocker Box Covers ...		24-25
6. Intake Pipes Assembly		26-27
Lubrication System	72-50	
1. Oil Level Gage		28-29
2. Oil Sump and Induction Housing Assembly		30-31
Accessory Drives	72-60	
1. Accessory Housing Assembly		32-33
2. Oil Pump Assembly and Accessory Housing Attaching Parts		34-35
3. Fuel Pump Assembly and Attaching Parts		36-37
4. Oil Filter Assembly, Oil Cooler Bypass Valve, and Fittings		38-39

<u>Subject</u>	<u>Chapter - Section</u>	<u>Page</u>
Accessory Drives (Cont.)	72-60	
5. Vacuum Pump and Cover, Prop Governor Drive		40-41
Engine and Fuel Control	73-00	
Fuel Distribution	73-10	
1. Fuel Injector, Fuel Manifold, and Injection Nozzles		42-43
2. Fuel Lines and Attaching Parts		44-45
Ignition Distribution System	74-00	
Distribution	74-20	
1. Magnetos, Magneto Drives, and Harnesses		46-47
2. Alternator and Belts		48-49
Starting	80-00	
Cranking	80-10	
1. Starter Motor and Attaching Parts.....		50-52
Back Section		
Service Kit Section		53-56
Numerical Index		57-60

Introduction



⚠ CAUTION: DO NOT USE THIS CATALOG AS AN ASSEMBLY OR INSTALLATION DOCUMENT. THIS CATALOG MUST ONLY BE USED TO IDENTIFY PARTS IN CONJUNCTION WITH THE APPLICABLE OVERHAUL MANUAL.

Purpose of this Catalog

This Illustrated Parts Catalog (IPC) contains a complete list of spare parts for the Lycoming IO-360-C1G6 engine model.

How to Use this Catalog

This catalog is based on the Air Transport Association (ATA) Spec 100 format. In order to clarify illustrations, Lycoming has taken discretion to classify non-system related assemblies and components in the same chapters, because they are physically connected.

This catalog is frequently updated by Service Bulletins (SB) and Service Instructions (SI). The updated information will be incorporated into subsequent full revisions of this catalog.

The ATA two element numbering system provides consistency throughout various manuals. The bottom of each page (beyond the frontal section) contains a two element number (##-##). In the two element numbering, the first two digits represent a chapter, and the next two digits subdivide the material into a more specific section.

The ATA format specifies the subject matter for each chapter-section. According to the ATA Standards, the following chapters apply to the IO-360-C1G6 Illustrated Parts Catalog:

24 (Electrical Power), 72 (Reciprocating Engine), 73 (Engine and Fuel Control), 74 (Ignition), and 80 (Starting).

EXAMPLE: **74** **—** **20**
Chapter Section
Ignition **Distribution**

NOTICE: See the IPC Table of Contents for the sub-systems identified in each section.

Numerical Index

The Numerical Index is a single list of part numbers, names and their locations within the IPC. It is useful for locating parts when you only know the number or name of the part.

Description column

Indentation of a part name represents a lower level of assembly. Attaching parts have the same indentation level and are below their associated parts grouping or assembly. This column is often referred to as the "Nomenclature" on other ATA Spec manuals.

Units per Assembly Column

Where more than one assembly exists, this column contains the quantity of a specific part required in the build sequence of only one next higher assembly. The letters “AR” are for “as required” applicable to bulk items or non-illustrated select-from-range-parts. The letters “RF” identify items listed for reference.

Vendor Accessories

Parts coverage of Vendor Accessories used on Lycoming engines are found in the applicable Vendor's Parts Catalog. A list of vendors' addresses is included in the latest revision of Lycoming Service Letter No. L114.

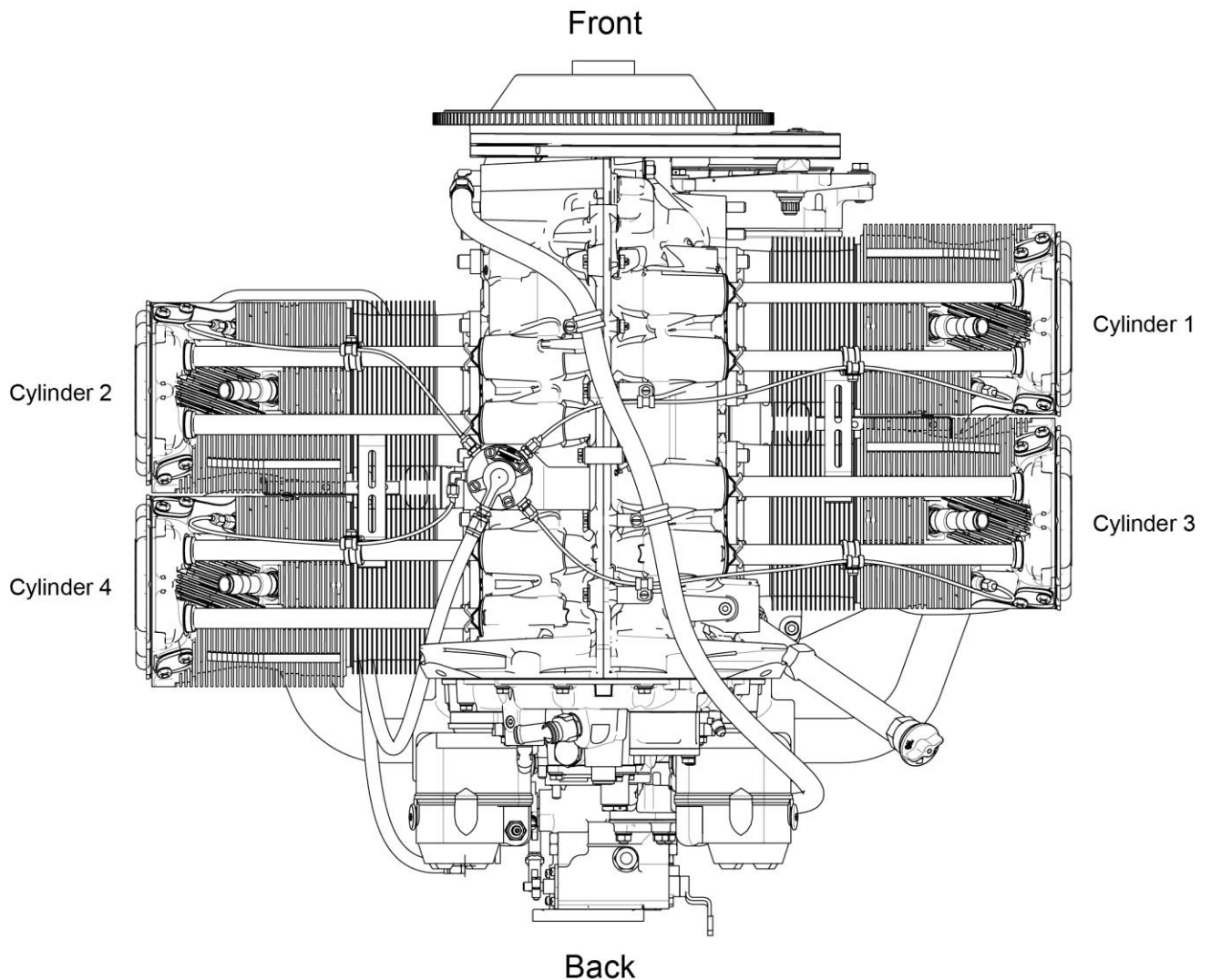
Any reference in this document to the suppliers/part manufacturer's product, by name, trademark, part number or other description is solely for the purpose of identification and does not indicate or infer that Lycoming accepts responsibility for quality control and/or airworthiness of parts, which do not pass through the Lycoming quality control system.

Environmental Compliance

Lycoming is concerned with preserving the environment. Lycoming strongly urges engine owners and repair/overhaul personnel to observe and comply with all federal, state, and local environmental regulations when solvents, paint, fuel, oil, chemicals, or other consumables are used in operating, maintaining, or overhauling an engine component. Please share our concern for, and commitment to a clean earth, clean water, and especially clean air for succeeding generations of flyers.

Perspective of References

In this manual, all references to locations of various components will be designated as if viewing the engine from the rear (or anti-propeller) end. The front of the engine is the propeller end and the oil sump is on the bottom of the engine. Cylinders are numbered from front to rear with the odd-numbered cylinders on the right-hand side. The firing order for this four-cylinder engine is 1-3-2-4.

**Top View of Engine**

How to Order Parts and Publications

An Oversize and Undersize Parts List is included in the front section of this catalog as an aid to order parts.

Although the information contained in this parts catalog is up-to-date at time of publication, users are advised to procure current information through all Lycoming distributors or from the factory by subscription. Refer to the latest revision of Service Letter No. L114 for subscription information.

1. For correct, expedited part shipments without delay:
 - A. Always give the model and serial number of your engine.
 - B. Always give the part number, nomenclature, and quantity.

The SB and SI documents are available from Lycoming distributors, or the factory, or by subscription.

Full Revisions of the Illustrated Parts Catalog are available from Lycoming distributors or the factory.

Every effort has been made in preparing this manual to ensure its accuracy. However, any comments, suggestions, or corrections to this manual are welcome and must be directed in writing to:

Technical Publications Coordinator
Lycoming Engines
652 Oliver Street
Williamsport, PA 17701

NOTICE: The owner of the manual must give notification to Lycoming Engines for a change of address.

Additionally, Lycoming has a Customer Service Hot Line for information and assistance to owners, operators, and maintenance personnel that are servicing Lycoming engines.

Call - U.S. and Canada toll free - +1-800-258-3279
International Customers - +1-570-323-6181

8:00 A.M. - 5:00 P.M. EST (-5GMT)

Monday - Friday.

©2016 by Lycoming. "All Rights Reserved." All Lycoming publications are to be considered copyrighted and may not be reproduced without permission of the company.

Abbreviations and Acronyms

A	
amp.	Ampere
AR	As Required
Assy.	Assembly
ATA	Air Transport Association
C	
Cyl.	Cylinder
F	
Fill.	Fillister
H	
Hex.	Hexagon
I	
I.D.	Inside Diameter
in.	Inch
IPC	Illustrated Parts Catalog
M	
mm	Millimeter
N	
No.	Number
NPT	National Pipe Taper (thread)
O	
O.D.	Outside Diameter
P	
P	Lycoming Proprietary Part
P/N	Part Number
Q	
Qty.	Quantity
R	
RF	Reference
S	
SB	Service Bulletin
SI	Service Instruction
SSP	Special Service Publication
U	
UNF	Unified National Fine

This page intentionally left blank.

Oversize and Undersize Parts Listing

PART NO.	DESCRIPTION	OVERSIZE (IN.)				UNDERSIZE (IN.)
		P05 .005	P10 .010	P30 .030	P50 .050	M06 .006
66796	INSERT		X			
69796	DOWEL	X				
71903-A	BUSHING					
72155-S	BUSHING		X			
75656-S	BUSHING		X			
75657-S	BUSHING		X			
LW-12688	SEAT			X		
LW-13792	SEAL				X	
STD-1065	DOWEL	X				
16T19468	SEAT			X		
18A26093	BEARING					X
18D26098	BEARING					X
18M23887	BEARING					X

NOTICE: When ordering oversize and undersize parts, be sure to specify the required oversize and undersize dimension along with the proper part number. For example, to order bearing Part Number (P/N) 18D26098 bearing in 0.006 in. undersize, order P/N 18D26098-M06. Undersize code letter is "M" while oversize code letter is "P". These letters are then followed by the number designating the size in thousandths of an inch.

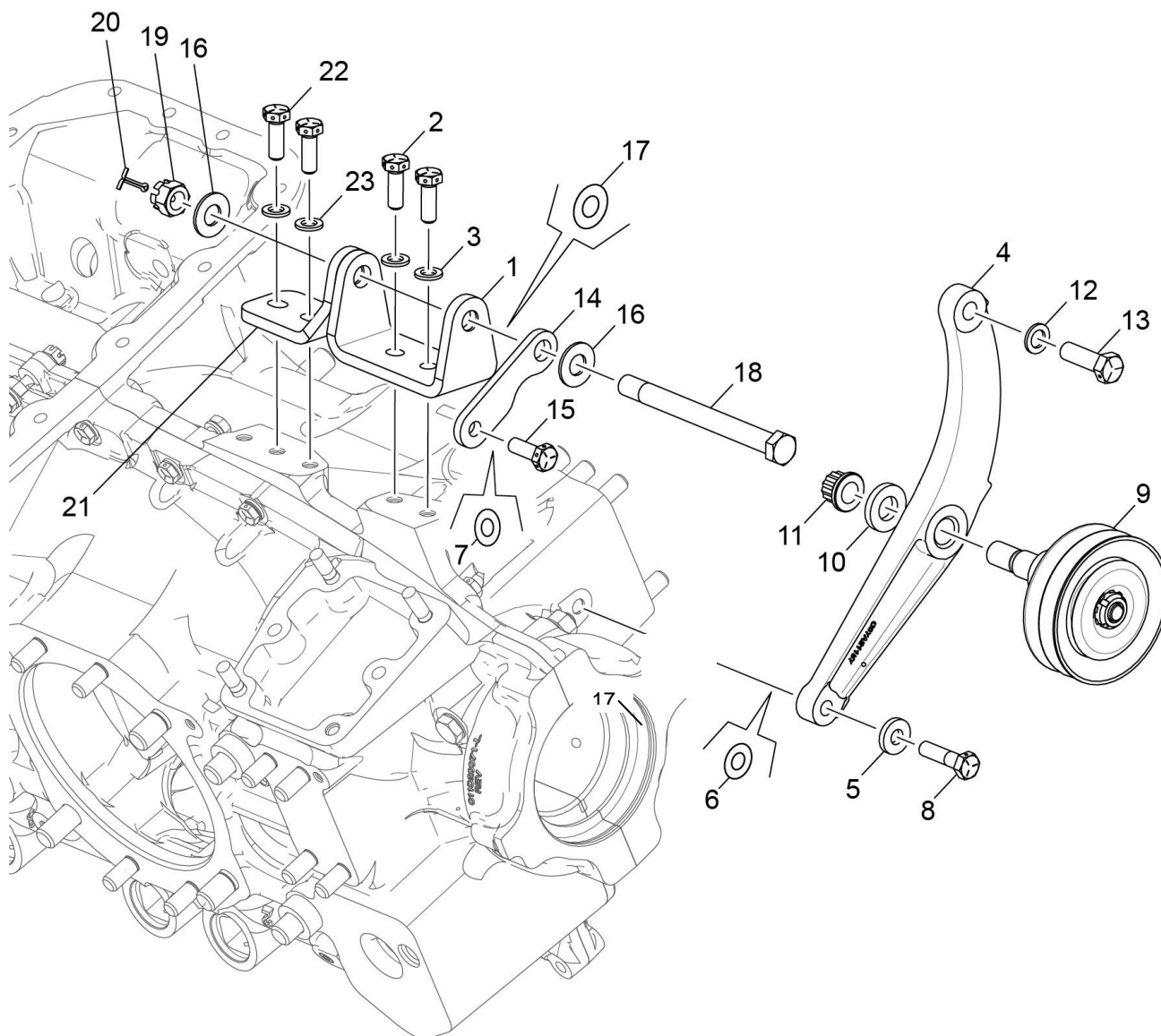


Figure 1
Alternator Attaching Parts

Figure 1 - Alternator Attaching Parts

Figure Item	Code	Part Number	Description	Units per Assembly
1		07A21156	BRACKET, Alternator	1
2		LW-31H0.88	BOLT, 5/16-18 x 7/8 long, hex head	2
3		STD-35	WASHER, 5/16 plain	4
4		07A21157	BRACKET, Alternator belt, adjust	1
5		STD-1727	WASHER, Plain, 3/4 O.D. x 11/32 I.D. x 1/8 thick	1
6		LW-14637	SHIM, 13/16 O.D. x 11/32 I.D. x 0.005 thick	3
7		LW-14649	SHIM, 13/16 O.D. x 11/32 I.D. x 0.010 thick	3
8		LW-31H1.22	BOLT, 5/16-18 x 1.22 long hex head, drilled	1
9		LW-19265	PULLEY AND SHAFT ASSY, Alternator	1
10		STD-569	WASHER, 0.52 I.D. x 1.00 O.D. x 0.13	1
11		STD-2221	NUT, 1/2-20, self locking	1
12		STD-33	WASHER, 3/8 plain	1
13		LW-38H1.19	BOLT, 3/8-16 x 1.19 long hex head, drilled	1
14		07F21160	STRUT, Alternator support	1
15		LW-31H0.88	BOLT, 5/16-18 x 7/8 long, hex head	3
16		STD-632	WASHER, 7/16 plain	2
17		LW-14650	SHIM, 7/8 O.D. x 0.46 I.D. x 0.005 thick	3
18		AN7-44	BOLT, 7/16-20 x 4.59 long hex head	1
19		AN310-7	NUT, 7/16-20 plain, slotted	1
20		STD-713	PIN, Cotter, 0.09 dia. x 3/4 long	1
21		07A26130	BRACKET, Alternator, aft	1
22		LW-31H0.88	BOLT, 5/16-18 x 7/8 long, hex head	2
23		STD-35	WASHER, 5/16 plain	2

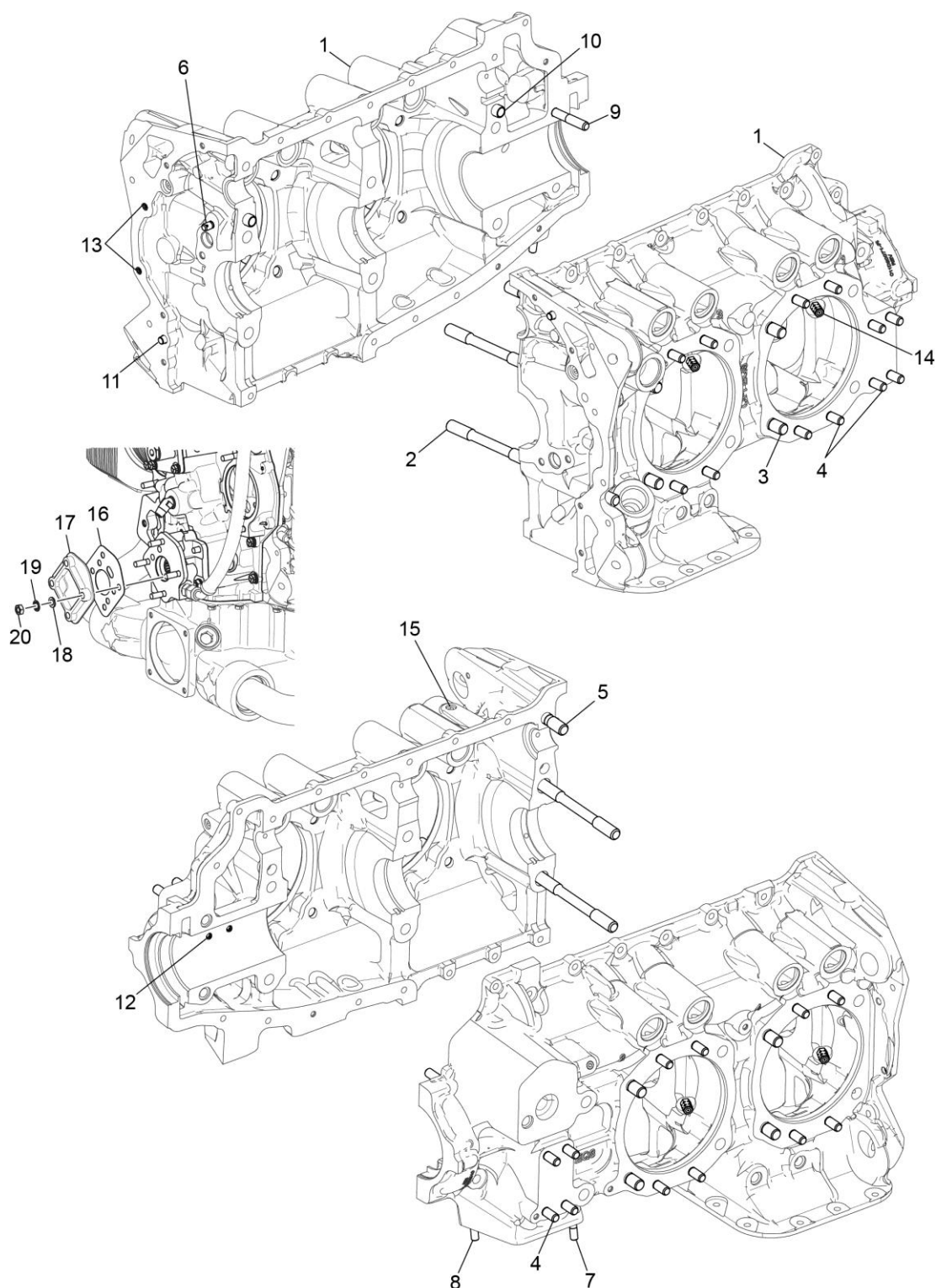


Figure 2
Crankcase Assembly

Figure 2 - Crankcase Assembly

Figure Item	Code	Part Number	Description	Units per Assembly
1		11D22560-5	CRANKCASE ASSEMBLY, Studding (roller lifter)	1
2		75154	STUD, 1/2-13 x 10.03 long	2
3		50-15	STUD, 1/2-20 x 1-7/8 long	8
4		38-13	STUD, 3/8-16 x 1-5/8 long	24
5		38D-17	STUD, 3/8-16 x 2.13 long	1
6		LW-13793	STUD, 5/16-18 x 0.94 long	1
7		31C-12	STUD, 5/16-18 x 1-1/2 long	2
8		31C-13	STUD, 5/16-18 x 1-5/8 long	1
9		38-22	STUD, 3/8-16 x 2-3/4 long	1
10		STD-557	DOWEL, 1/2 diameter x 0.69 long, hollow	2
11		STD-514	DOWEL, 5/16 diameter x 1/2 long	2
12		69796	DOWEL, Crankshaft bearing	2
13		STD-1623	INSERT, 1/4-20, UNC x 3/8	2
14		73772	NOZZLE ASSEMBLY, Piston cooling	4
15		1102	PLUG, 1/8-27 NPT, allen head	1
16		72053	GASKET, Governor	1
17		72378	COVER, Governor drive	1
18		STD-35	WASHER, 5/16 plain	4
19		STD-475	WASHER, 5/16 lock, internal teeth	4
20		STD-1410	NUT, 5/16-18 plain	4

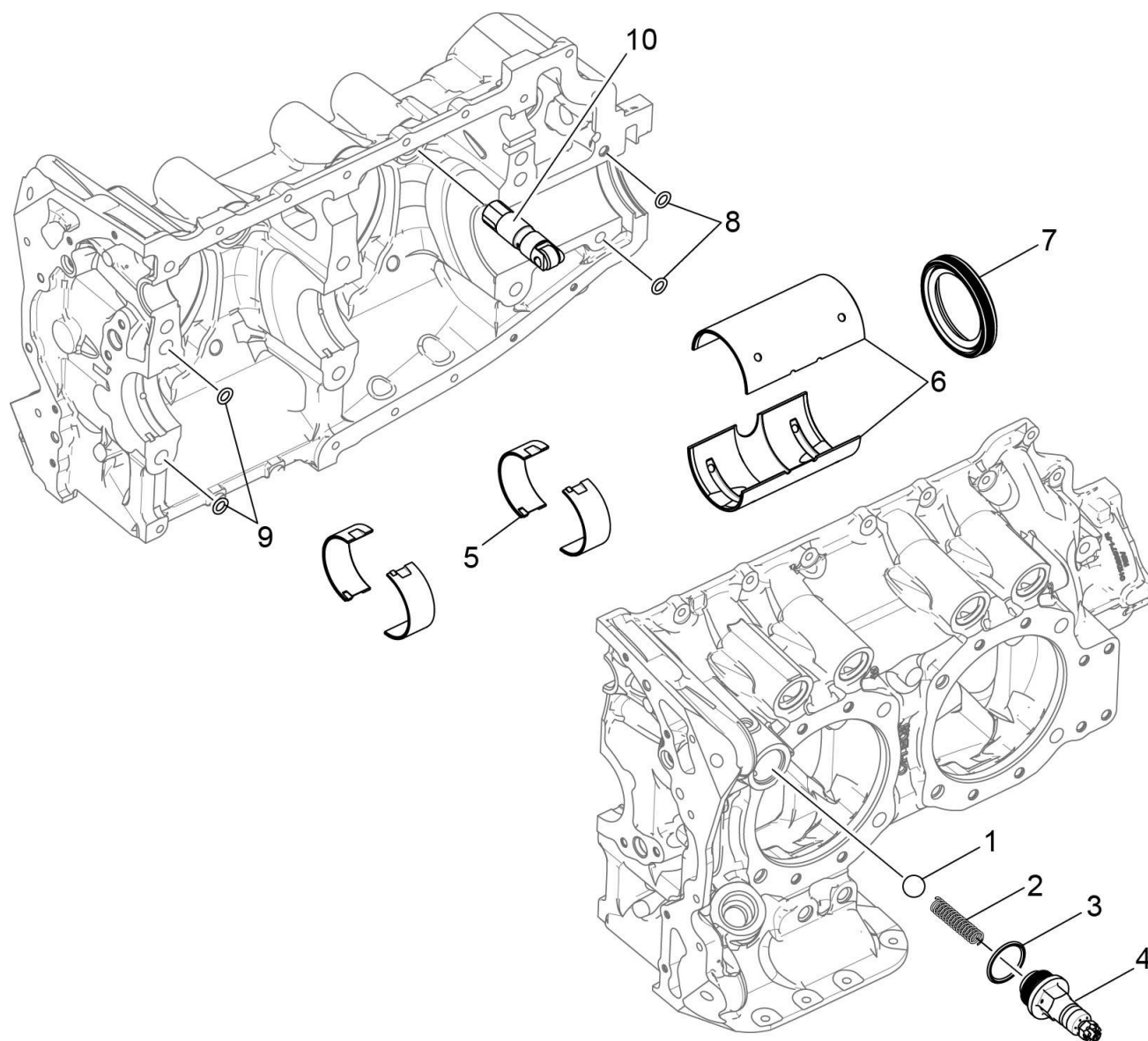


Figure 3
Crankcase Related Parts

Figure 3 - Crankcase Related Parts

Figure Item	Code	Part Number	Description	Units per Assembly
1		1028-B	BALL, 11/16 diameter	1
2	*	61084	SPRING, Oil pressure relief valve	1
	*	68668	SPRING, Oil pressure relief valve	1
	*	77467	SPRING, Oil pressure relief valve	1
	*	LW-11713	SPRING, Oil pressure relief valve	1
	*	LW-18085	SPRING, Oil pressure relief valve	1
3		06E19769-1.25	GASKET, 1-1/4 I.D. x 1-1/2 O.D. x 3/32 annular	1
4		77808	VALVE ASSEMBLY, Oil pressure relief valve, adjustable	1
5		18D26098	BEARING, Crankshaft	4
6		18A26093	BEARING, Crankshaft	2
7	**	LW-13792	SEAL, Crankshaft, Oil	1
8		72075	SEAL, Oil, 3/32 section x 7/16 I.D.	2
9		72091	RING, Oil seal, 0.36 ID x 0.10 diameter	2
10	***	LRT23381	BODY ASSEMBLY, Hydraulic roller tappet	8
	***	15B26262	BODY, Hydraulic tappet	8
<p>* Select spring to give a minimum of three threads exposed on adjusting screw to allow field adjustment. Reference latest revision of Lycoming Table of Limits SSP-1776, Part I for spring identification.</p> <p>** Refer to latest revision of Lycoming Service Instruction No. 1324 for installation.</p> <p>*** Refer to the latest revision of Service Instruction No. SI 1011 for tappet details and crankcase requirements</p>				

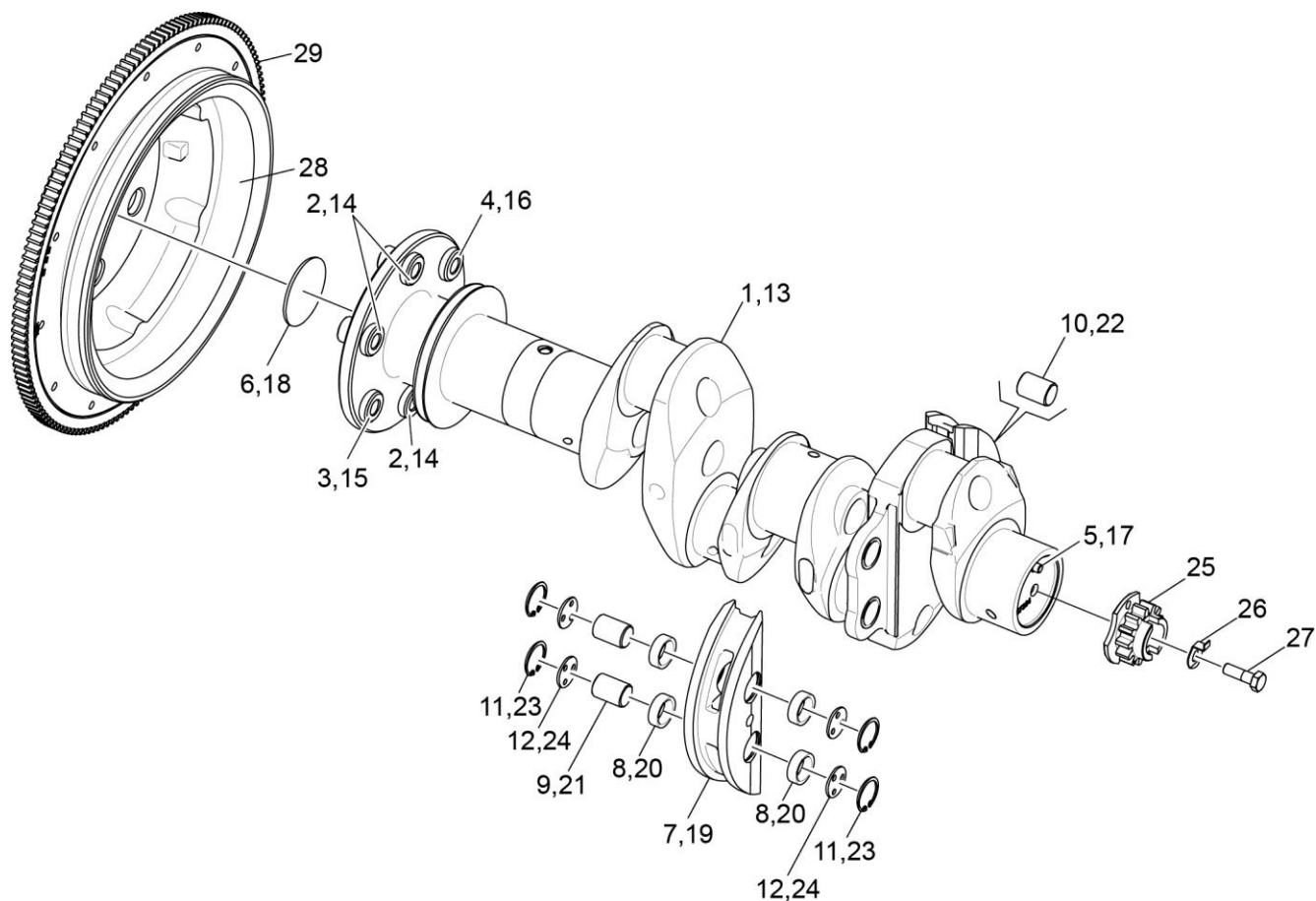


Figure 4
Crankshaft Assembly and Related Parts

Figure 4 - Crankshaft Assembly and Related Parts

Figure Item	Code	Part Number	Description	Units per Assembly
1		13B47234	CRANKSHAFT AND BUSHING ASSEMBLY	1
2		75656-S	BUSHING, Propeller flange, long	4
3		72155-S	BUSHING, Propeller flange 0.7505 - 0.7510	1
4		75657-S	BUSHING, Propeller flange 0.7818 - 0.7823	1
5		STD-1065	DOWEL, Stepped, 0.310-0.251 diameter	1
6		STD-1211	PLUG, 2.00 diameter expansion	1
7		LW-19227	COUNTERWEIGHT ASSY	2
8		71903-A	BUSHING, Dynamic counterweight	4
9		14W21696	ROLLER, Dynamic counterweight	2
10		72797	ROLLER, Dynamic counterweight, 6.3 order	2
11		LW-14820	RING, Internal retaining	8
12		71907	WASHER, Counterweight	8
13		13B47219	CRANKSHAFT AND BUSHING ASSEMBLY	1
14		75656-S	BUSHING, Propeller flange, long	4
15		72155-S	BUSHING, Propeller flange 0.7505 - 0.7510	1
16		75657-S	BUSHING, Propeller flange 0.7818 - 0.7823	1
17		STD-1065	DOWEL, Stepped, 0.310-0.251 diameter	1
18		STD-1211	PLUG, 2.00 diameter expansion	1
19		LW-19227	COUNTERWEIGHT ASSY	2
20		71903-A	BUSHING, Dynamic counterweight	4

(continued on next page)

Figure 4 - Crankshaft Assembly and Related Parts (Cont.)

Figure Item	Code	Part Number	Description	Units per Assembly
21		14W21696	ROLLER, Dynamic counterweight	2
22		72797	ROLLER, Dynamic counterweight, 6.3 order	2
23		LW-14820	RING, Internal retaining	8
24		71907	WASHER, Counterweight	8
25	*	13S19646	GEAR, Crankshaft	1
26		LW-18639	LOCKPLATE, Crankshaft gear	1
27		STD-2246	BOLT, 5/16-24 x 1.00 long	1
28		74977	SUPPORT ASSEMBLY, Starter ring gear	1
29		72566	GEAR, Starter ring, 12/14 pitch	1
* Refer to the latest revision of Service Bulletin No. 475 for proper installation.				

This page intentionally left blank.

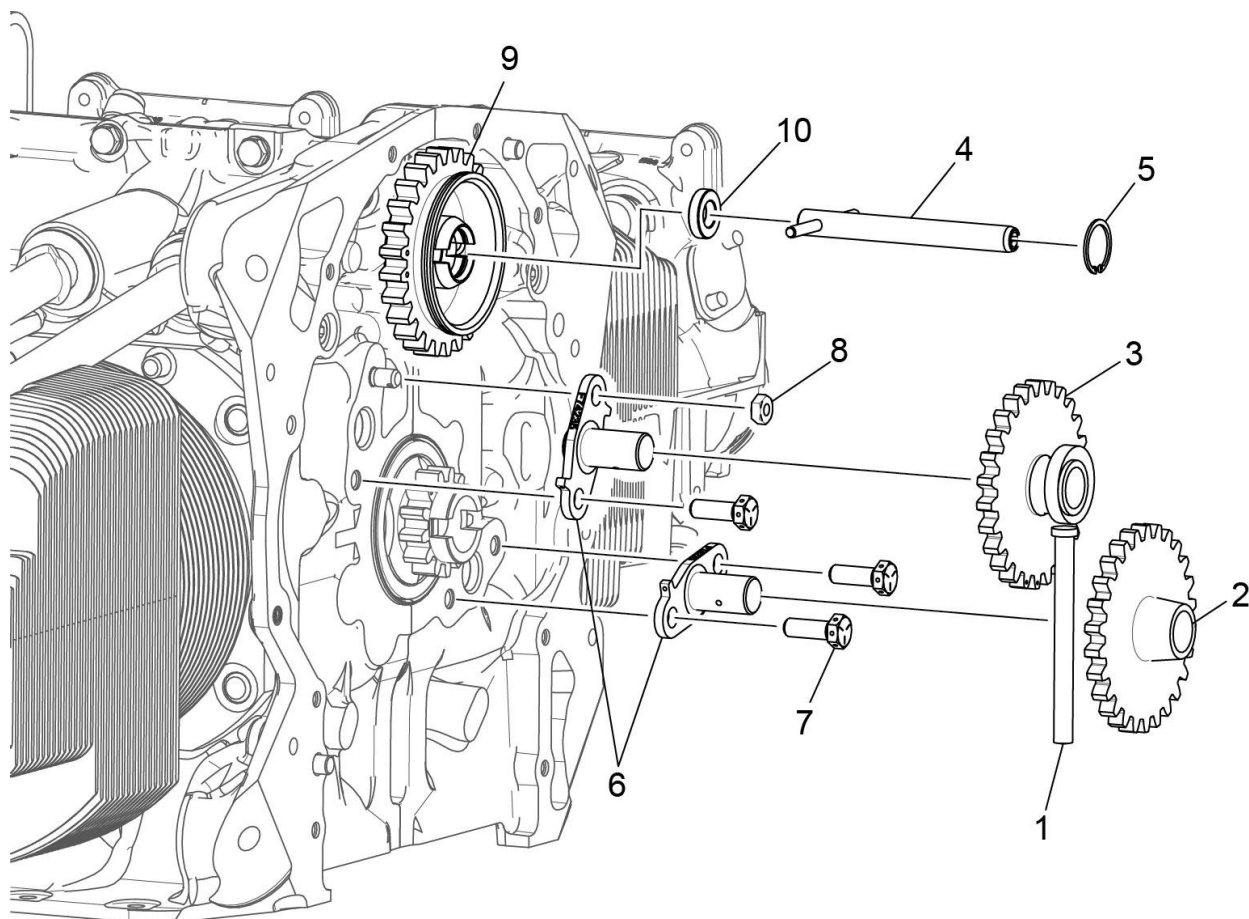


Figure 5
Crankshaft Idler Gears, Tachometer Drive, and Camshaft

Figure 5 - Crankshaft Idler Gears, Tachometer Drive, and Camshaft

Figure Item	Code	Part Number	Description	Units per Assembly
1		23D26777	PLUNGER, Fuel pump, long	1
2		74996	GEAR ASSEMBLY, Crankshaft idler, plain	1
3		75072	GEAR ASSEMBLY, Crankshaft idler	1
4		76121	SHAFT ASSEMBLY, Tachometer	1
5		STD-2231	RING, Internal retaining	1
6		LW-13796	SHAFT, Crankshaft idler gear	2
7		LW-31H0.88	BOLT, 5/16-18 x 7/8 long, hex. head, drilled	3
8		STD-2168	NUT, 5/16-18 NC-3 slotted shear	1
9		15M23452	CAMSHAFT ASSEMBLY, Roller lifter	1
		LW-18840	CAMSHAFT ASSEMBLY, Flat tappet	1
10		76118	SPACER, Tachometer shaft centering	1

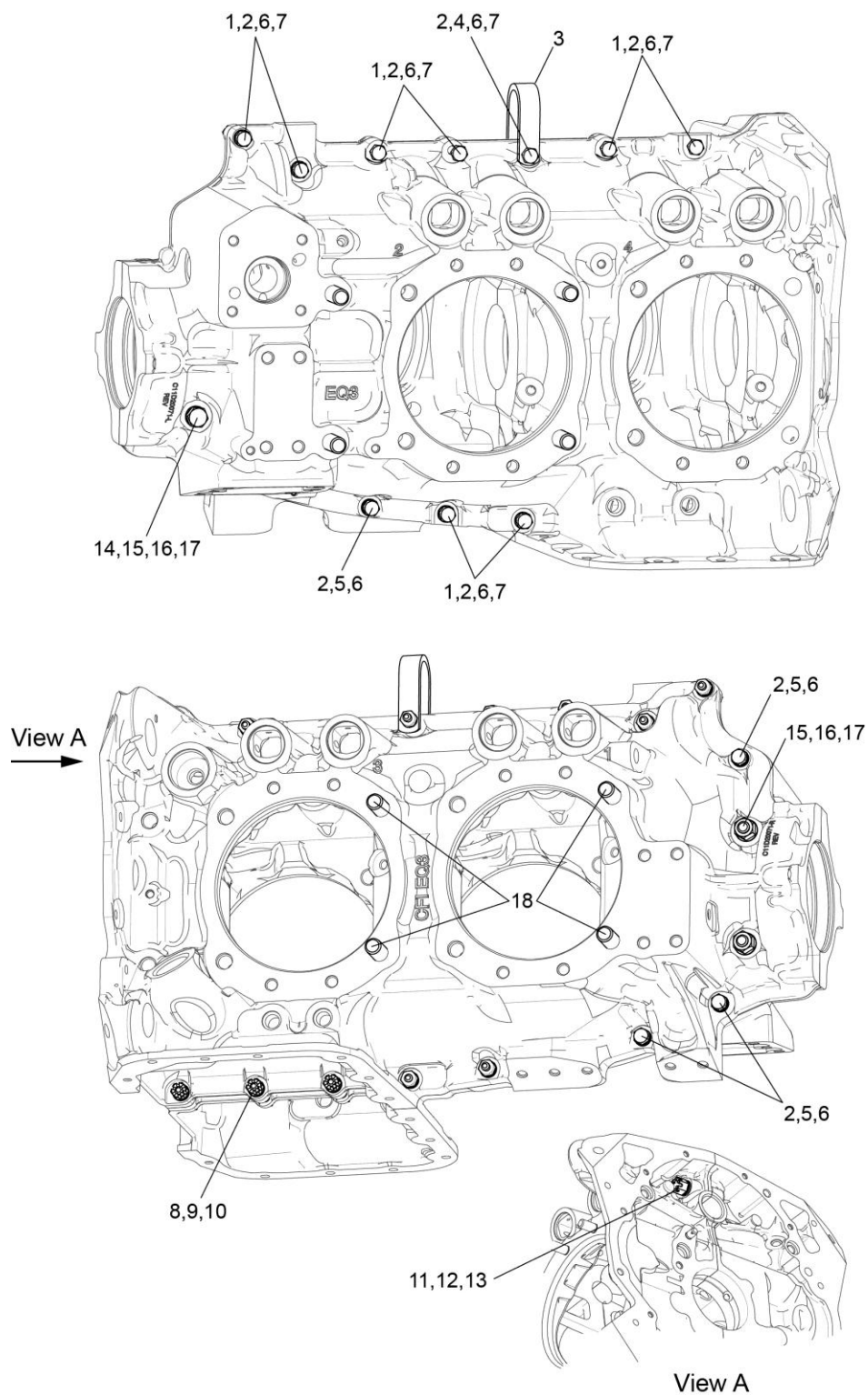


Figure 6
Crankcase Attaching Parts

Figure 6 - Crankcase Attaching Parts

Figure Item	Code	Part Number	Description	Units per Assembly
1		LW-25-1.50	BOLT, 1/4-20 x 1-1/2 long, hex. head	8
2		STD-8	WASHER, 1/4 plain	19
3		60803	STRAP, Lifting	1
4		LW-25-1.75	BOLT, 1/4-20 x 1-3/4 long, hex. head	1
5		LW-25-1.13	BOLT, 1/4-20 x 1-1/8 long, hex. head	3
6		STD-160	WASHER, 1/4 lock, internal teeth	12
7		STD-1411	NUT, 1/4-20 plain	9
8		LW-25S1.50	BOLT, 1/4-20 x 1-1/2 long, hex. head, drilled	3
9	AR	STD-8	WASHER, 1/4 plain	9
10		STD-2249	NUT, 1/4-20 slotted	3
11		STD-33	WASHER, 3/8 plain	3
12		AN960-616L	WASHER, 3/8 plain (thin)	1
13		STD-872	NUT, 3/8-24 slotted	1
14		AN6-34A	BOLT, 3/8-24 x 3-37/64 long, hex. head	2
15		STD-33	WASHER, 3/8 plain	4
16		STD-678	WASHER, 3/8 lock, internal teeth	2
17		STD-596	NUT, 3/8-24 plain	2
18		76220	STUD, 1/2-20 x 10-45/64 long	4
AR as required				

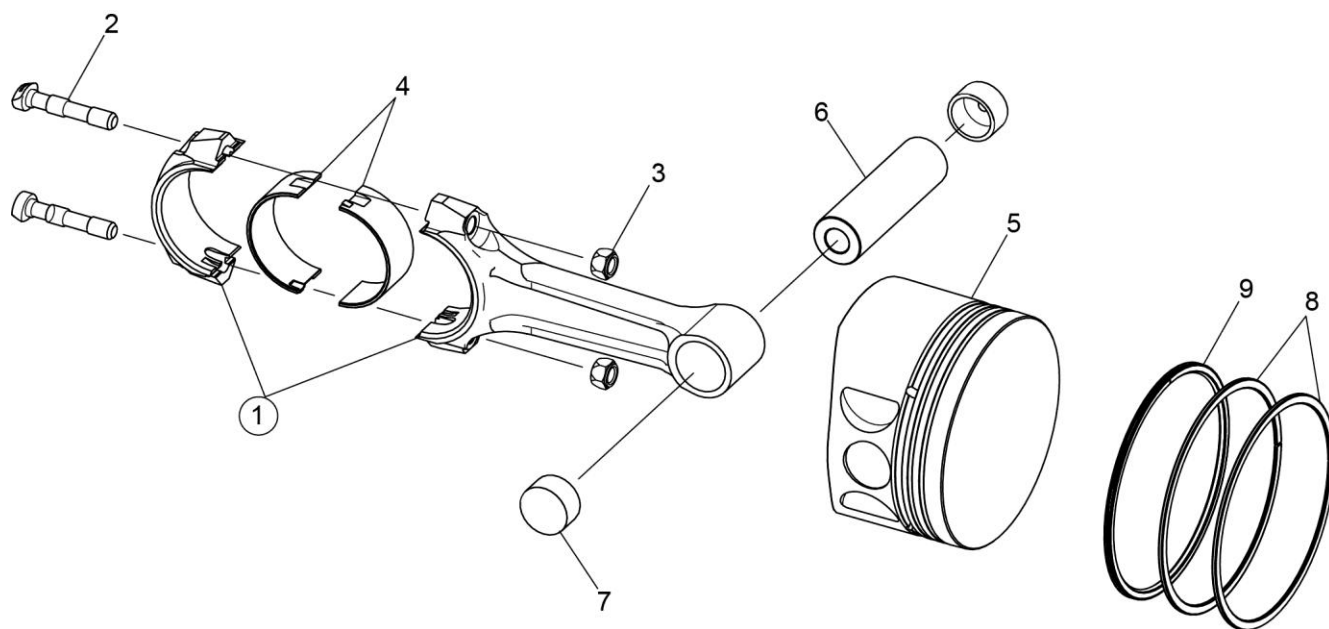


Figure 7
Connecting Rods, Pistons, and Ring Assemblies

Figure 7 - Connecting Rods, Pistons, and Ring Assemblies

Figure Item	Code	Part Number	Description	Units per Assembly
1		77450-S	CONNECTING ROD ASSEMBLY	4
2		75060	BOLT, Connecting rod	8
3		LW-12186	NUT, Connecting rod bolt	8
4		18M23887	BEARING, Connecting rod	8
5		14D23908	PISTON, Compression ratio 8.70:1	4
6		LW-14078	PIN, Piston	4
7		72198	PLUG, Piston pin	8
8		74241	RING, Piston, compression, 5-1/8 bore	8
9		14H21950	RING, Piston, oil, 5-1/8 bore	4

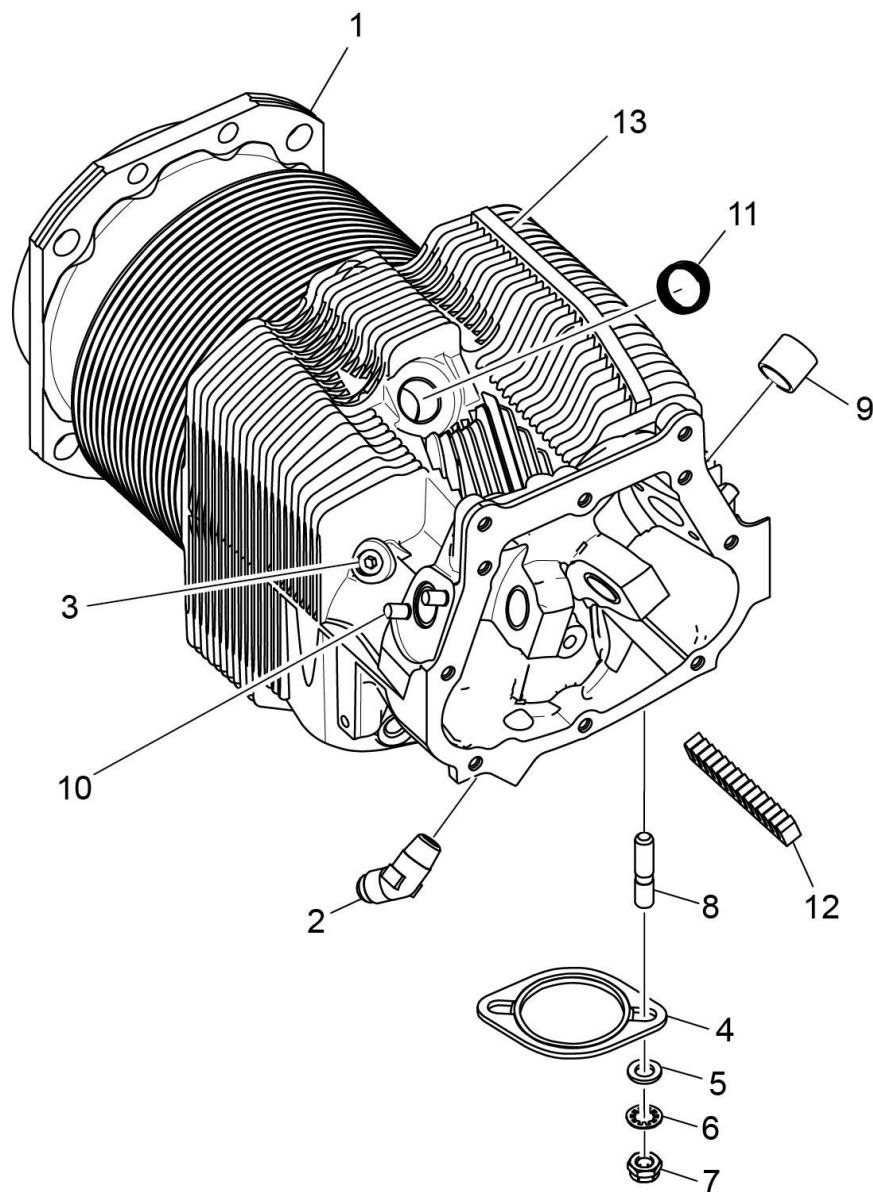


Figure 8
Cylinder Assembly

Figure 8 - Cylinder Assembly

Figure Item	Code	Part Number	Description	Units per Assembly
1		LW-12993	CYLINDER ASSEMBLY	4
2		MS20823-6D	ELBOW, 45°, 3/8 flared tube	4
3		1102	PLUG, 1/8-27 NPT, Allen head	4
4		77611	GASKET, Exhaust flange	4
5		STD-35	WASHER, 5/16 plain	8
6		STD-475	WASHER, 5/16 lock, internal teeth	8
7		STD-1410	NUT, 5/16-18, plain	8
8		31C-12	STUD, 5/16-18 x 1-1/2 long	8
9		66670	BUSHING, Rocker shaft	16
10		25C-8	STUD, 1/4-20 x 1.00 long	4
11		66796	INSERT, Spark plug, 18-1.5 MM	8
12		72343	STABILIZER, Cylinder head fins	4
13		72344	STABILIZER, Cylinder head fins	4
Refer to the latest revision of Service Instruction No. 1256 for service valve guides.				

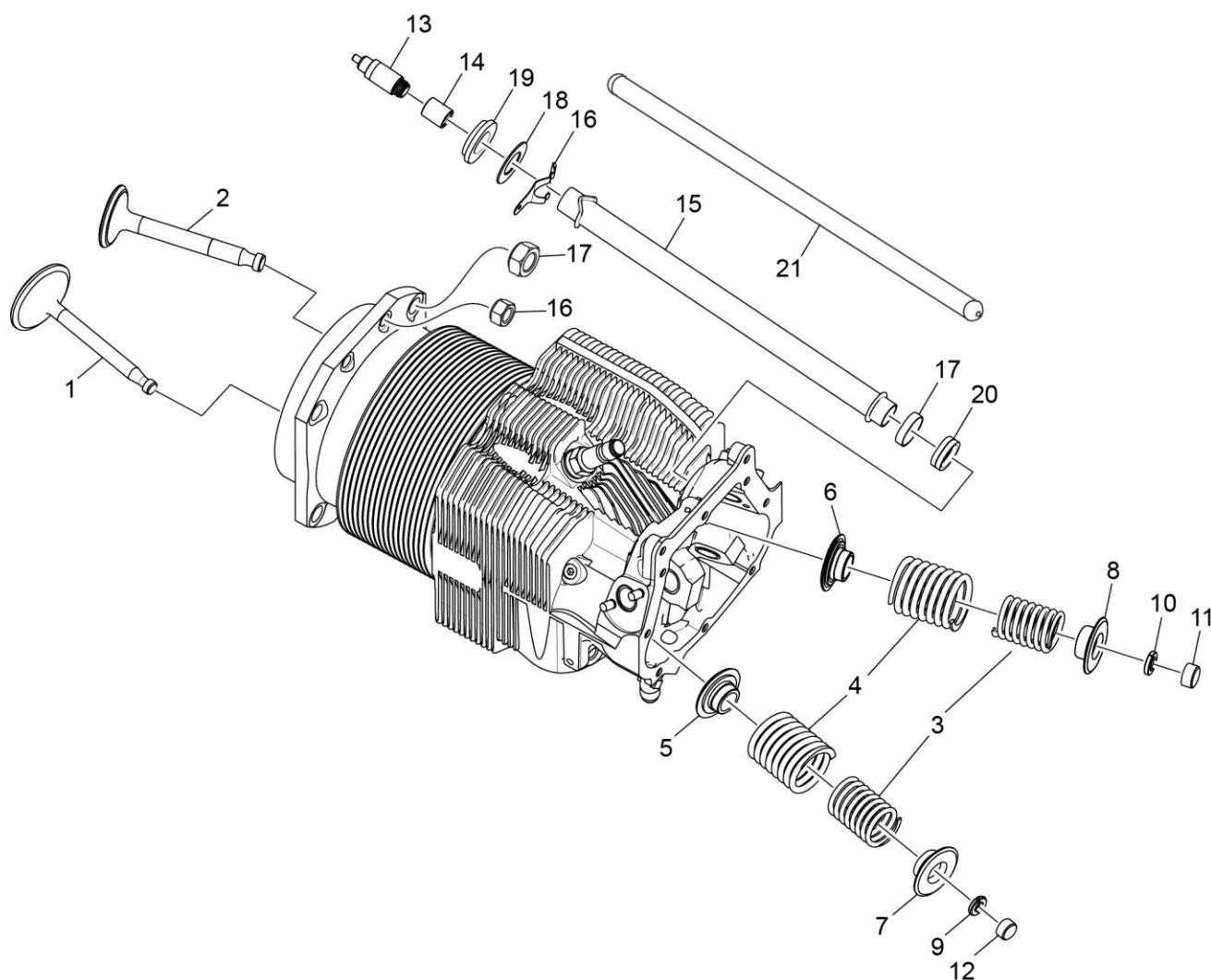


Figure 9
Valve Assembly and Related Parts

Figure 9 - Valve Assembly and Related Parts

Figure Item	Code	Part Number	Description	Units per Assembly
1		17A23937	VALVE, Intake	4
2		17B23935	VALVE, Exhaust	4
3		LW-11797	SPRING, Valve, inner	8
4		LW-11796	SPRING, Valve, outer	8
5		LW-13321	SEAT, Valve spring, lower intake	4
6		LW-13322	SEAT, Valve spring, lower exhaust	4
7		69532	SEAT, Valve spring, upper intake	4
8		LW-16475	SEAT, Valve spring, upper, exhaust	4
9		72050	KEY, Valve, intake	8
10		17C21191	KEY, Valve, exhaust	8
11		17C19386	CAP, Valve stem, exhaust (rotator type)	4
12		62388	CAP, Valve stem	4
13		15B26066	PLUNGER ASSEMBLY, Hydraulic lifter	8
14		15B21319	SOCKET, Hydraulic tappet	8
15		15G23462	SHROUD TUBE ASSEMBLY, Push rod	8
		72255	SHROUD TUBE ASSEMBLY, Push rod, int	8
16		15H21201	SPRING, Shroud tube	16
17		61503	SLEEVE, Shroud tube seal	8
18		01L23459	WASHER, 25/32 I.D. x 1-3/8 O.D. x 1/32 thick	8
		66728	WASHER, 25/32 I.D. x 1-1/4 O.D. x 1/32 thick	8
19		06A23493	SEAL, Shroud tube	8
20		LW-18661	SEAL, Shroud tube	8 or 16
21	*	15F19957-51	ROD ASSEMBLY, Push, RT	AR
	*	15F19957-52	ROD ASSEMBLY, Push, RT	AR
	*	15F19957-53	ROD ASSEMBLY, Push, RT	AR
	*	15F19957-54	ROD ASSEMBLY, Push, RT	AR
	*	15F19957-55	ROD ASSEMBLY, Push, RT/ F	AR
	*	15F19957-56	ROD ASSEMBLY, Push, RT/ F	AR
	*	15F19957-57	ROD ASSEMBLY, Push, F	AR
	*	15F19957-58	ROD ASSEMBLY, Push, F	AR
AR as required * See latest revision of Service Instruction No. 1060 for complete push rod application. RT Used on roller tappet engines. F Used on flat tappet engines.				

(continued on next page)

Figure 9 - Valve Assembly and Related Parts (Cont.)

Figure Item	Code	Part Number	Description	Units per Assembly
21	*	15F21362-17	ROD ASSEMBLY, Push, RT	AR
	*	15F21362-18	ROD ASSEMBLY, Push, RT	AR
	*	15F21362-19	ROD ASSEMBLY, Push, RT	AR
	*	15F21362-20	ROD ASSEMBLY, Push, RT	AR
	*	15F21362-21	ROD ASSEMBLY, Push, RT / F	AR
	*	15F21362-22	ROD ASSEMBLY, Push, RT / F	AR
	*	15F21362-23	ROD ASSEMBLY, Push, F	AR
	*	15F21362-24	ROD ASSEMBLY, Push, F	AR
AR as required * See latest revision of Service Instruction No. 1060 for complete push rod application. RT Used on roller tappet engines. F Used on flat tappet engines.				

This page intentionally left blank.

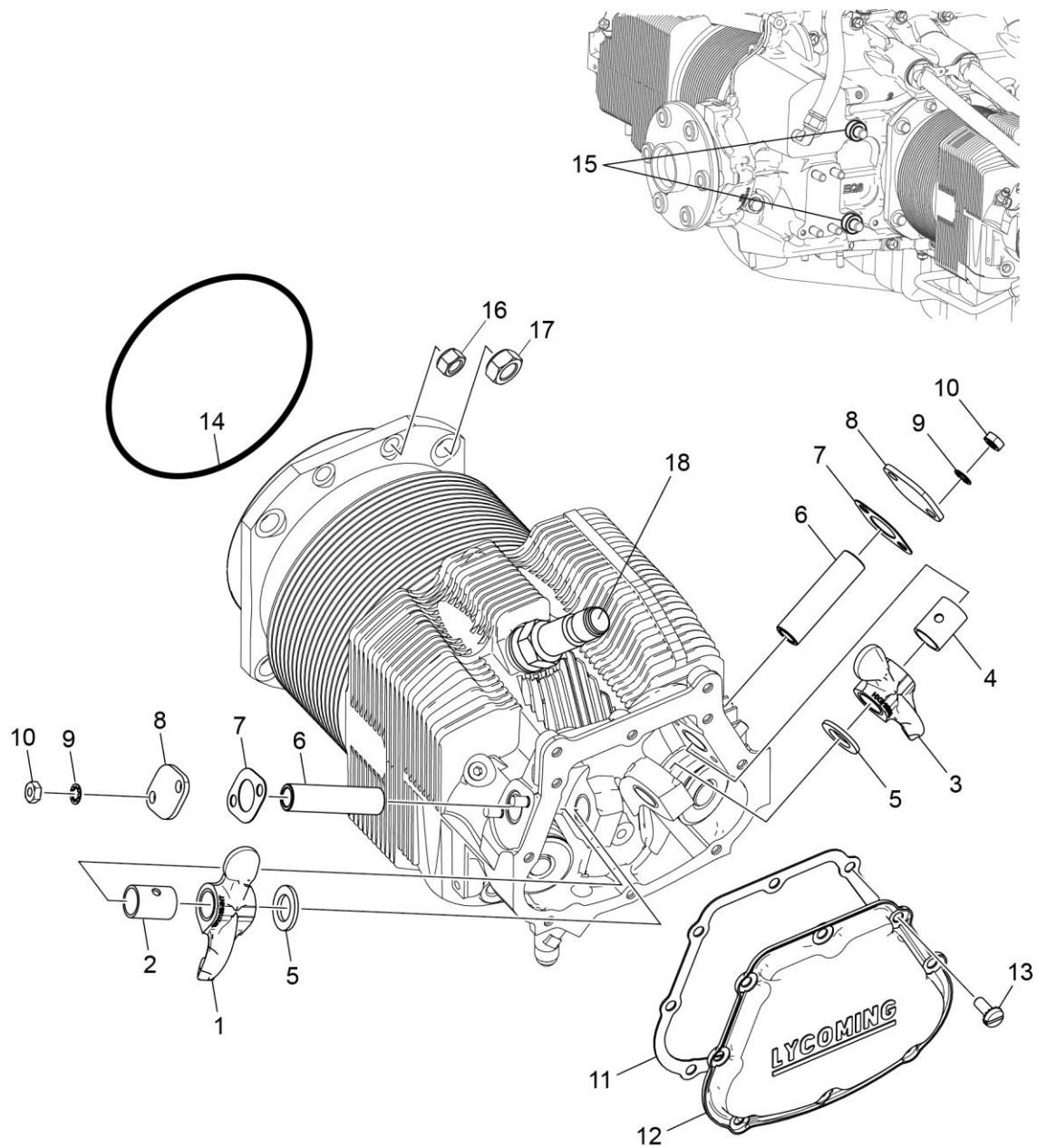


Figure 10
Cylinder Related Parts

Figure 10 - Cylinder Related Parts

Figure Item	Code	Part Number	Description	Units per Assembly
1	*	17F21188	ROCKER ASSEMBLY, Valve, intake	4
2		74389	BUSHING, Valve rocker	4
3	*	17F21187	ROCKER ASSEMBLY, Valve, exhaust	4
4		74389	BUSHING, Valve rocker	4
5		71549	WASHER, Thrust, valve rocker	8
6		72626	SHAFT, Valve rocker	8
7		66732	GASKET, Valve rocker shaft cover	8
8		72710	COVER, Valve rocker shaft	8
9		STD-160	WASHER	16
10		STD-1411	NUT, 1/4-20 plain	16
11		67193	GASKET, Rocker box cover	4
12		68795	COVER ASSY, Rocker box	4
13		STD-1925	SCREW, 1/4-20 x 5/8 long, pan head	32
14		71481	RING, Oil seal, 4-27/32 ID x 3/32 diameter section	4
15		74887	SPACER, 33/64 I.D. x 7/8 O.D. x 3/8 thick	2
16		383-B	NUT, 3/8-24 plain	16
17		STD-2090	NUT, 1/2-20 plain	18
18	**	1182-E7	SPARK PLUG	8
<p>* Due to the size of the area where the part number is stamped, the last five digits (21188 or 21187) could be all that is shown of the part number.</p> <p>**Refer to the latest revision of Lycoming Service Instruction No. 1042 for complete listing of all approved spark plugs.</p>				

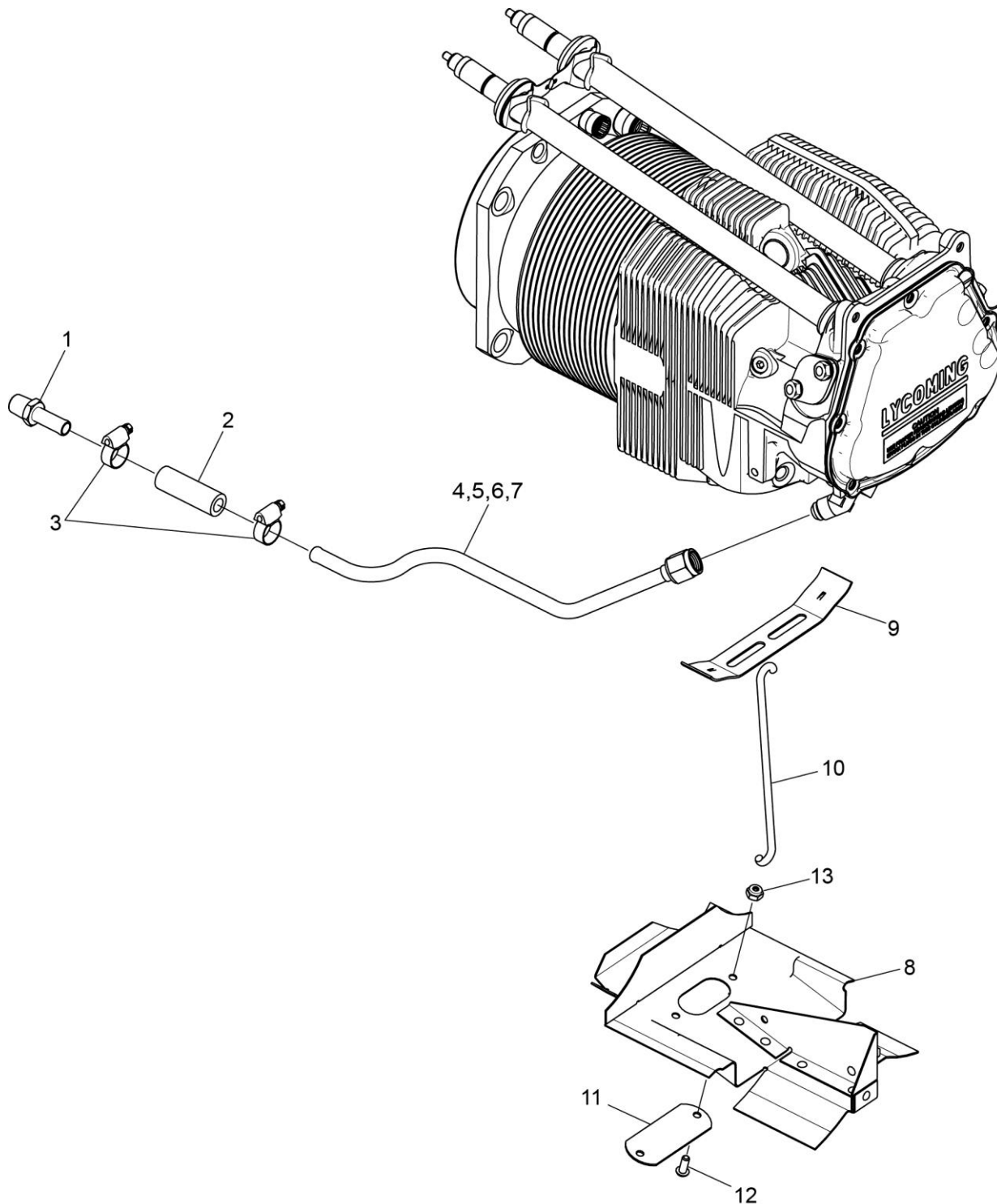


Figure 11
Cylinder Head Drain Tubes and Intercylinder Cooling Baffles

Figure 11 - Cylinder Head Drain Tubes and Intercylinder Cooling Baffles

Figure Item	Code	Part Number	Description	Units per Assembly
1		STD-684	NIPPLE, Straight, 3/8 I.D. hose	4
2		STD-2180	HOSE, 3/8 x 2-1/2 long	4
3		LW-15592-5-05	CLAMP, Hose	8
4		72702	TUBE ASSEMBLY, Cylinder head oil drain, cyl. No. 1	1
5		72703	TUBE ASSEMBLY, Cylinder head oil drain, cyl. No. 2	1
6		74808	TUBE ASSEMBLY, Cylinder head oil drain, cyl. No. 3	1
7		73027	TUBE ASSEMBLY, Cylinder head oil drain, cyl. No. 4	1
8		75338	BAFFLE ASSEMBLY, Intercylinder	2
9		71611	RETAINER, Intercylinder baffle	2
10		71610	HOOK, Intercylinder baffle retainer	2
11		72834	COVER, Baffle ignition cable hole	2
12		STD-692	SCREW, 10-32 x 1/2 long, round head	4
13		STD-670	LOCKNUT, 10-32	4

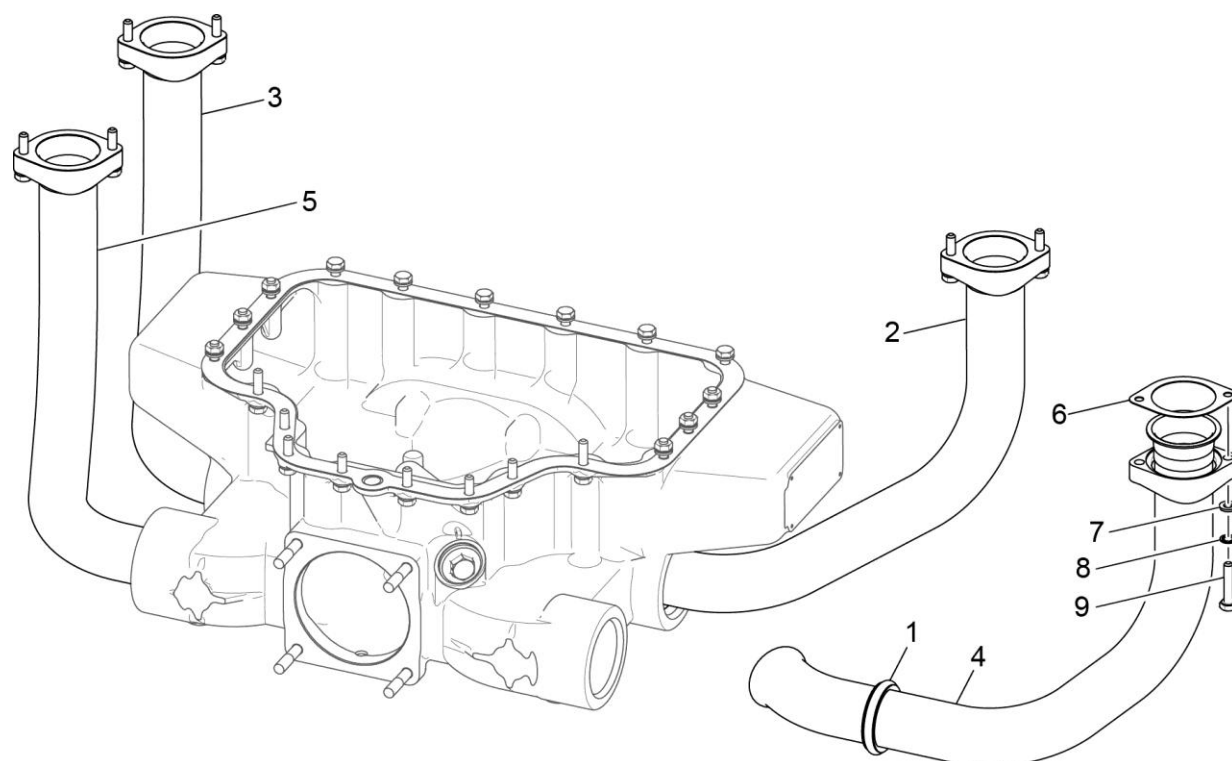


Figure 12
Intake Pipes Assembly

Figure 12 - Intake Pipes Assembly

Figure Item	Code	Part Number	Description	Units per Assembly
1		77569	RING, Seal, intake pipe	4
2		78981	PIPE, Intake, cylinder No. 1	1
3		78982	PIPE, Intake, cylinder No. 2	1
4		78983	PIPE, Intake, cylinder No. 3	1
5		78984	PIPE, Intake, cylinder No. 4	1
6		71973	GASKET, 2 bolt flange, 1-3/4 I.D.	4
7		STD-8	WASHER, 1/4 plain	8
8		STD-160	WASHER, 1/4 lock, internal teeth	8
9		LW-25-1.25	BOLT, 1/4-20 x 1-1/4 long	8

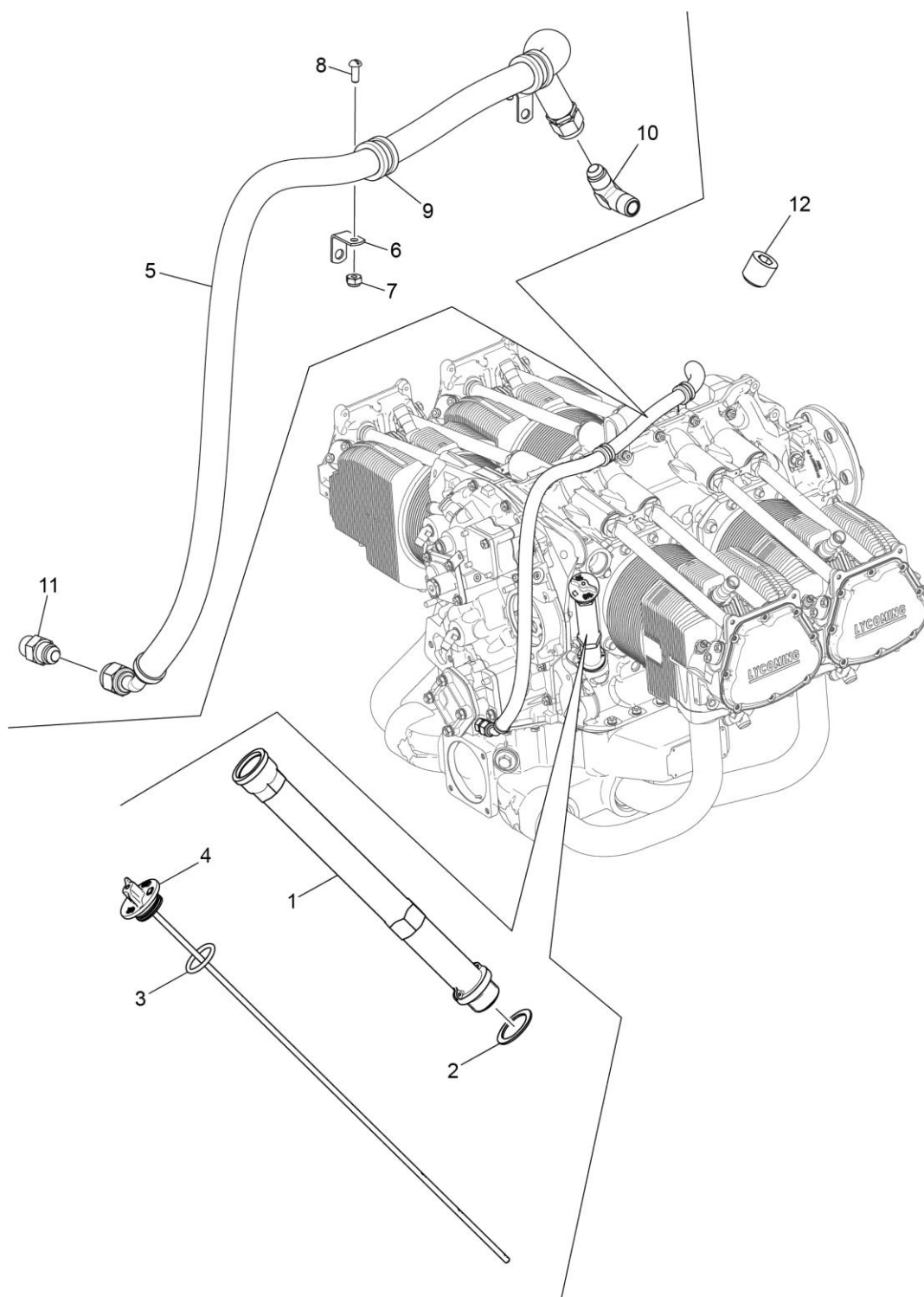


Figure 13
Oil Level Gage and Prop Governor Oil Line

Figure 13 - Oil Level Gage and Prop Governor Oil Line

Figure Item	Code	Part Number	Description	Units per Assembly
1		75736	TUBE, Oil level gage (11.57 long)	1
2		72059	GASKET, Oil level gage	1
3		74068	RING, Oil level gage plug	1
4		LW-14760	GAGE ASSEMBLY, Oil level	1
5		LW-12879-6S350	HOSE ASSY, 3/8 hose, 45 elbow	1
6		LW-14875	BRACKET, Extension	2
7		STD-670	LOCKNUT, #10-32	2
8		STD-692	SCREW, #10-32 x 1/2 long, round head	2
9		LW-16266-10-75	CLAMP	2
10		MS20822-6	ELBOW, 1/4 NPT to 3/8 flared tube	1
11		75739	NIPPLE, 3/8 flared tube	1
12	*	STD-784	PLUG, 3/8-18 NPT, allen head	1
Note: Omit oil level gage on RT model.				
* No prop governor oil line on RT model.				

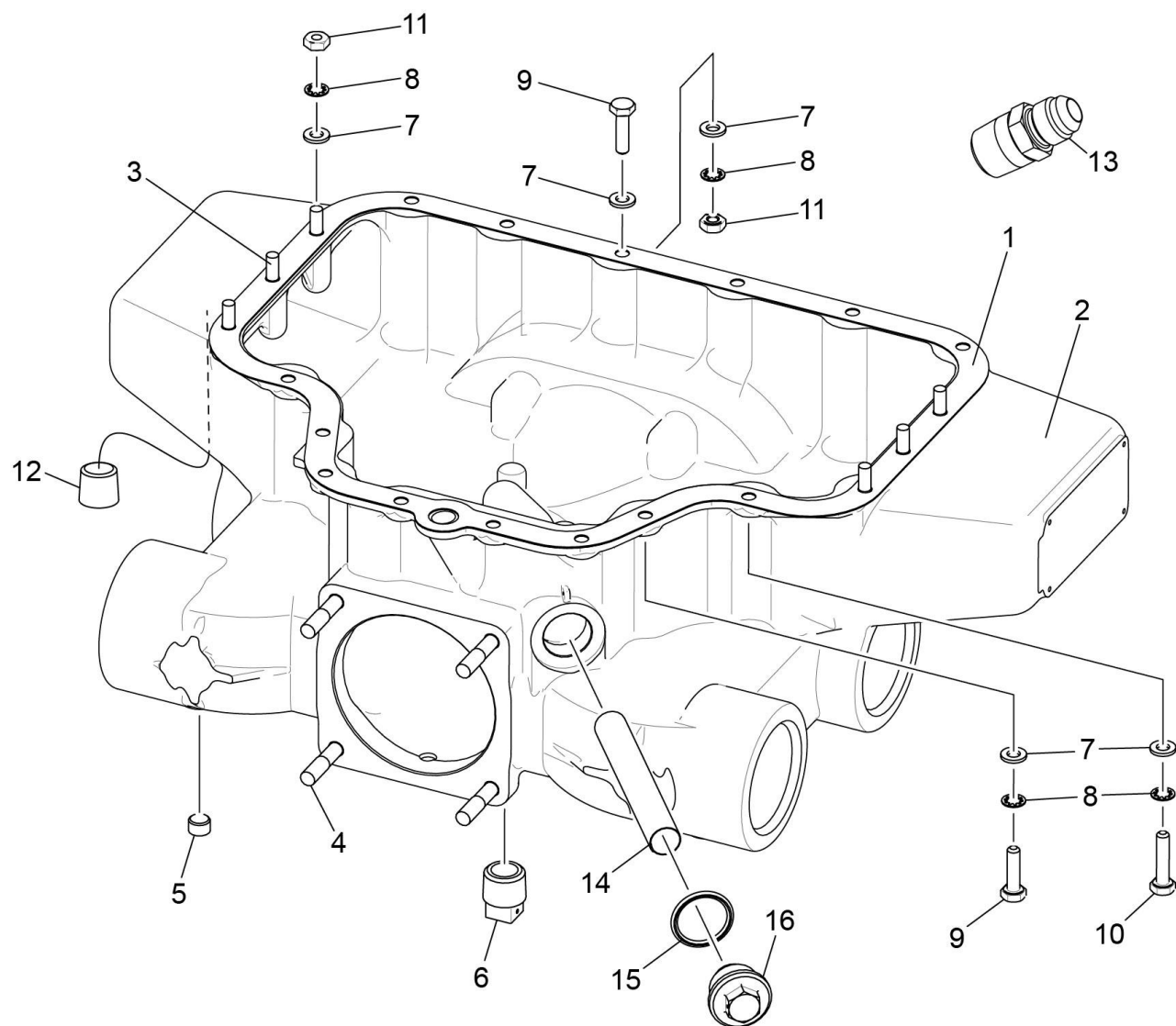


Figure 14
Oil Sump and Induction Housing Assembly

Figure 14 - Oil Sump and Induction Housing Assembly

Figure Item	Code	Part Number	Description	Units per Assembly
1		LW-13353	GASKET, Oil sump	1
2		56A22730	SUMP ASSEMBLY, Oil	1
3		61400	STUD, 1/4-20 x 1-3/16 long	6
4		31C-12	STUD, 5/16-18 X 1-3/4 long	4
5		1102	PLUG, 1/8 pipe	4
6		STD-551	PLUG, 1/2-14 NPT, square head, drilled	1
7		STD-8	WASHER, 1/4 plain	26
8		STD-160	WASHER, 1/4 lock, internal teeth	20
9		LW-25-0.94	BOLT, 1/4-20 x 15/16 long, hex. head	14
10		LW-25-1.13	BOLT, 1/4-20 x 1-1/8 long, hex. head	2
11		STD-1411	NUT, 1/4-20 plain	12
12		STD-783	PLUG, 1/4-20-18 NPT, Allen head, shipping	1
13		AN816-6	NIPPLE, 1/4 ANPT to 3/8 tube	1
14		70484	SCREEN, Oil suction	1
15		06E19769-1.00	GASKET, Annular, 1.00 I.D.	1
16		LW-12545	PLUG, 5/8 hex. head x 1.00-20 thread	1

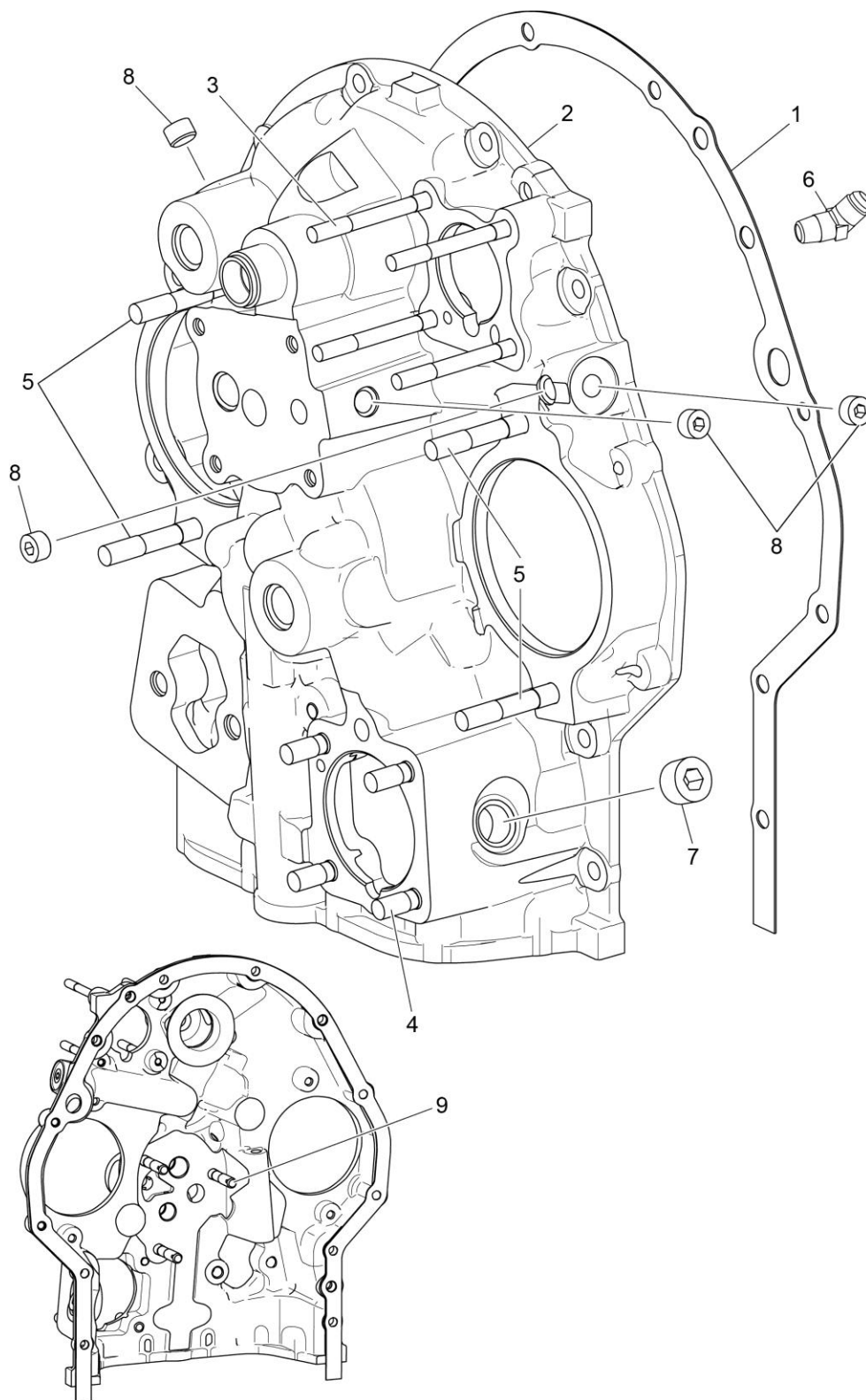


Figure 15
Accessory Housing Assembly

Figure 15 - Accessory Housing Assembly

Figure Item	Code	Part Number	Description	Units per Assembly
1		73818	GASKET, Accessory housing	1
2		21A21533-23	ACCESSORY HOUSING ASSEMBLY, Studding	1
3		25C-22	STUD, 1/4-20 x 2-3/4 long	4
4		31C-12	STUD, 5/16-18 x 1-1/2 long	4
5		31C-16	STUD, 5/16-18 x 2.00 long	4
6		MS20823-4	ELBOW, 1/8 NPT to 1/4 flared tube, 45 deg.	1
7		STD-784	PLUG, 3/8-18 NPT, Allen head	1
8		1102	PLUG, 1/8 pipe	4
9		31CD-17	STUD, 5/16-18 x 2-1/8 long drilled	3

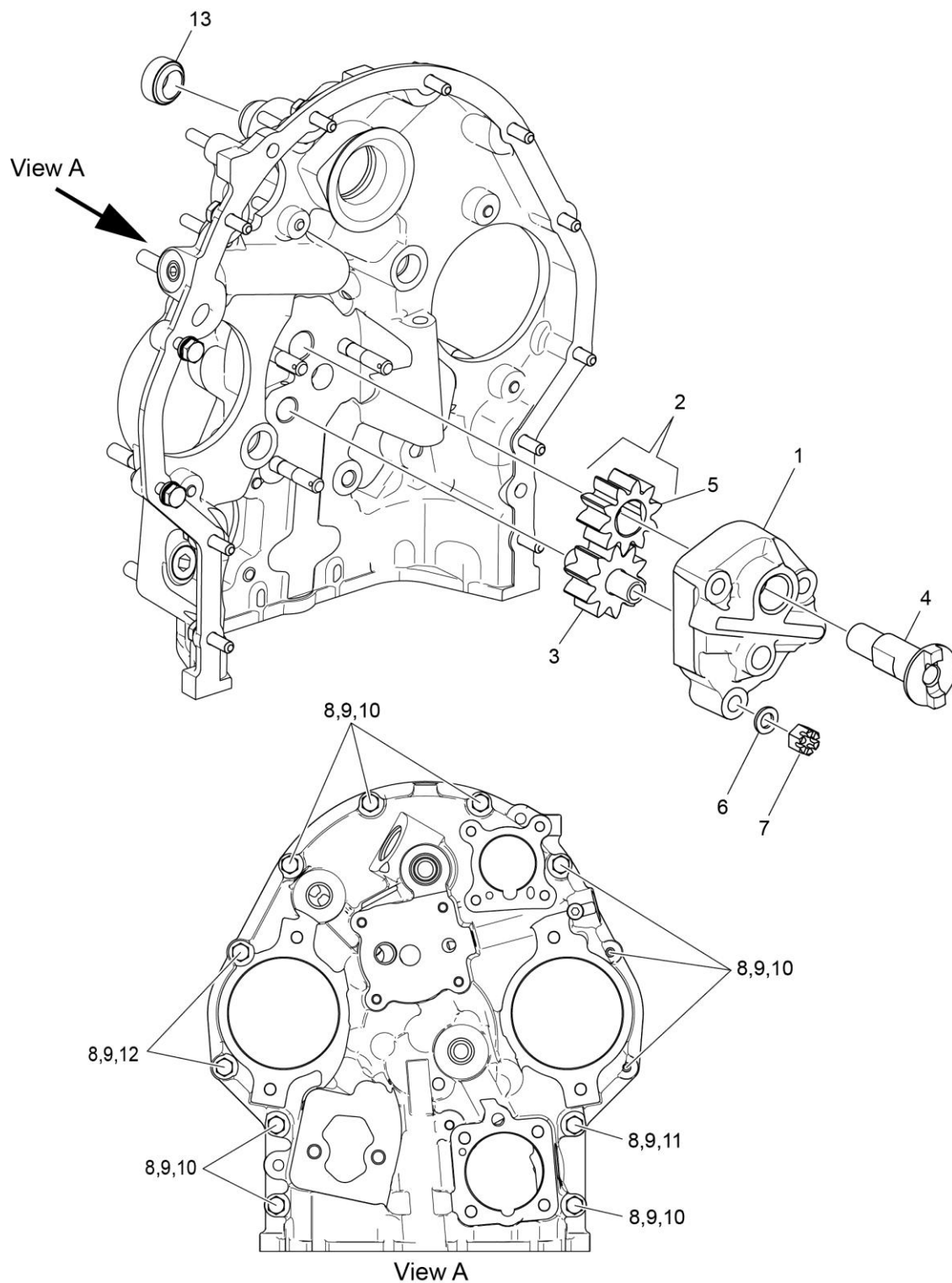


Figure 16
Oil Pump Assembly and Accessory Housing Attaching Parts

Figure 16 - Oil Pump Assembly and Accessory Housing Attaching Parts

Figure Item	Code	Part Number	Description	Units per Assembly
1		78531	BODY ASSEMBLY, Oil pump	1
2		05K19423-S	IMPELLER KIT	1
3	*	LW-18110	IMPELLER ASSEMBLY, Oil pump driven	1
4	*	61174	SHAFT, Oil pump drive	1
5	*	LW-18109	IMPELLER, Oil pump driving	1
6		STD-35	WASHER, 5/16 plain	3
7		STD-1420	NUT, 5/16-18 slotted	3
8		STD-8	WASHER, 1/4 plain	12
9		STD-160	WASHER, 1/4 lock, internal teeth	12
10		LW-25-0.94	BOLT, 1/4-20 x 15/16 long, hex. head	9
11		LW-25-1.13	BOLT, 1/4-20 x 1-1/8 long, hex. head	1
12		LW-25-1.44	BOLT, 1/4-20 x 1-7/16 long, hex. head	2
13		LW-14260	SEAL, Tachometer drive, oil	1
* To ensure impellers are replaced together, oil pump impellers available in kit form only.				

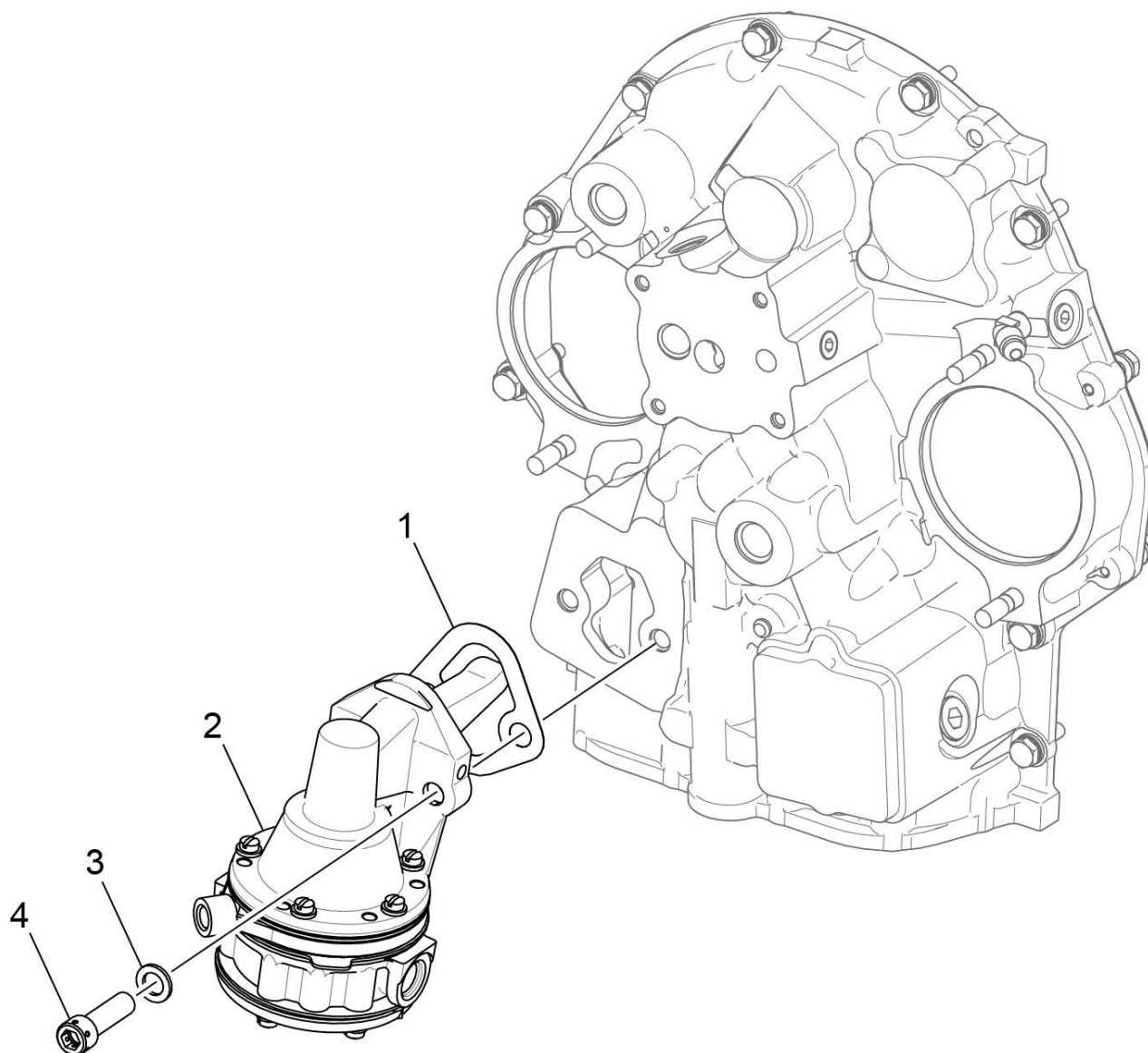


Figure 17
Fuel Pump Assembly and Attaching Parts

Figure 17 - Fuel Pump Assembly and Attaching Parts

Figure Item	Code	Part Number	Description	Units per Assembly
1		60096	GASKET, Fuel pump	1
2		62B26931	FUEL PUMP, (High Pressure)	1
3		STD-33	WASHER, 3/8 plain	2
4		STD-1882	SCREW, 3/8-16 x 1-9/32 long, socket head, drilled	2

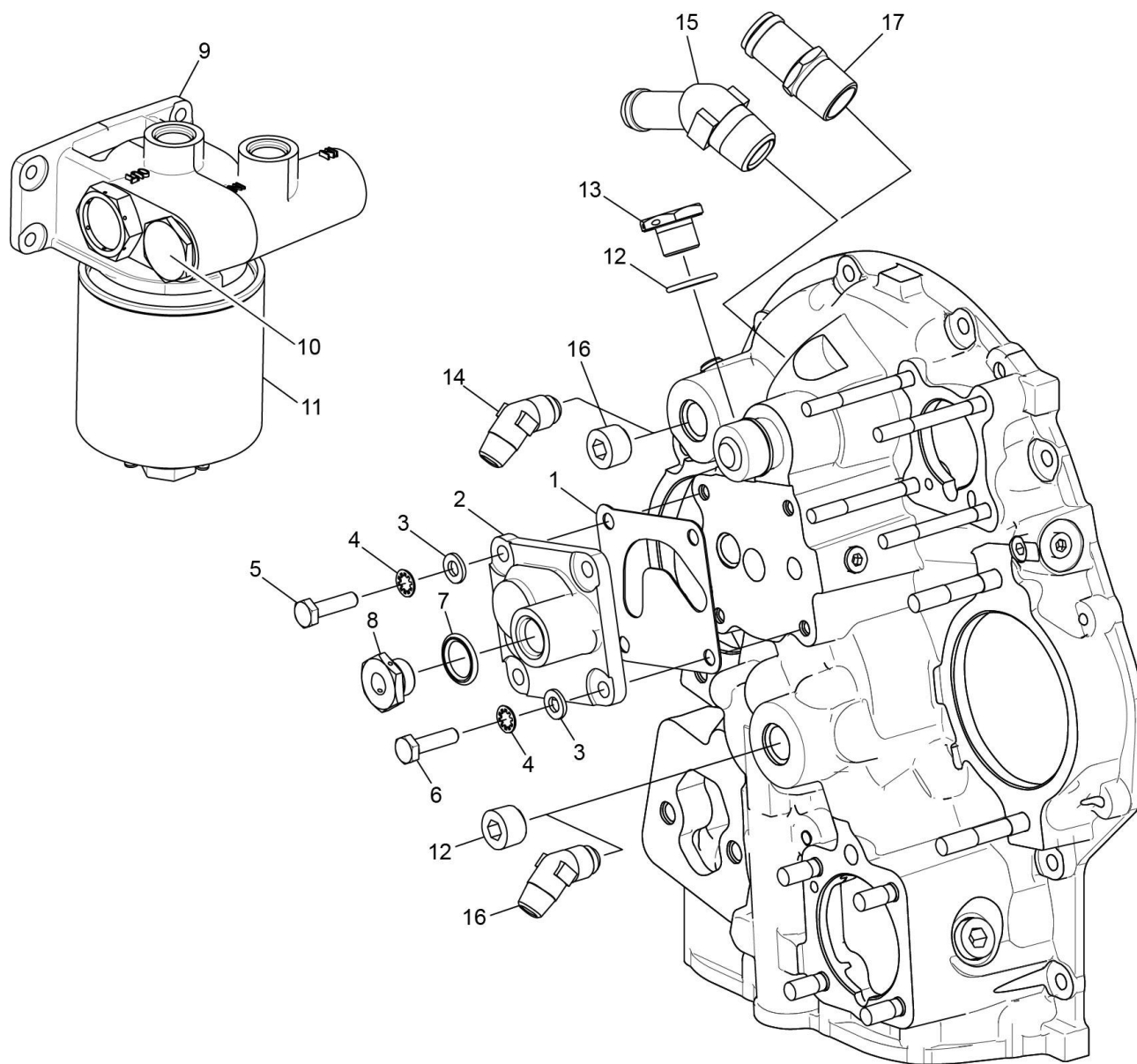


Figure 18
Oil Filter Assembly, Oil Cooler Bypass Valve, and Fittings

Figure 18 - Oil Filter Assembly, Oil Cooler Bypass Valve, and Fittings

Figure Item	Code	Part Number	Description	Units per Assembly
1		06B21644	GASKET, Oil filter base cover	1
2		21M23736	COVER, Oil filter base	1
3		STD-8	WASHER, 1/4 plain	4
4		STD-160	WASHER, 1/4 lock, internal teeth	4
5		LW-25-0.94	BOLT, 1/4-20 x 15/16 long hex.	3
6		LW-25H1.00	BOLT, 1/4-20 x 1.00 long, hex. head, drilled	1
7		06E19769-0.63	GASKET, Annular, 5/8 I.D.	1
8		1540	PLUG, Thermometer well	1
9		54J21208	ADAPTER ASSY, Oil filter remote	1
10		53E22144	VALVE ASSEMBLY, Temp. control, oil cooler bypass	1
11		LW-13906	OIL FILTER, Short, CH48103-1	1
12		06E19769-0.63	GASKET, Annular, 5/8 I.D.	1
13		62417	PLUG, Oil cooler bypass	1
14		MS20823-8	ELBOW, 3/8 NPT, 1/2 flared tube	2
15		AN844-10D	ELBOW, Pipe	1
16		STD-784	PLUG, 3/8-18 NPT, allen head	2
17		71140	FITTING, Breather	1

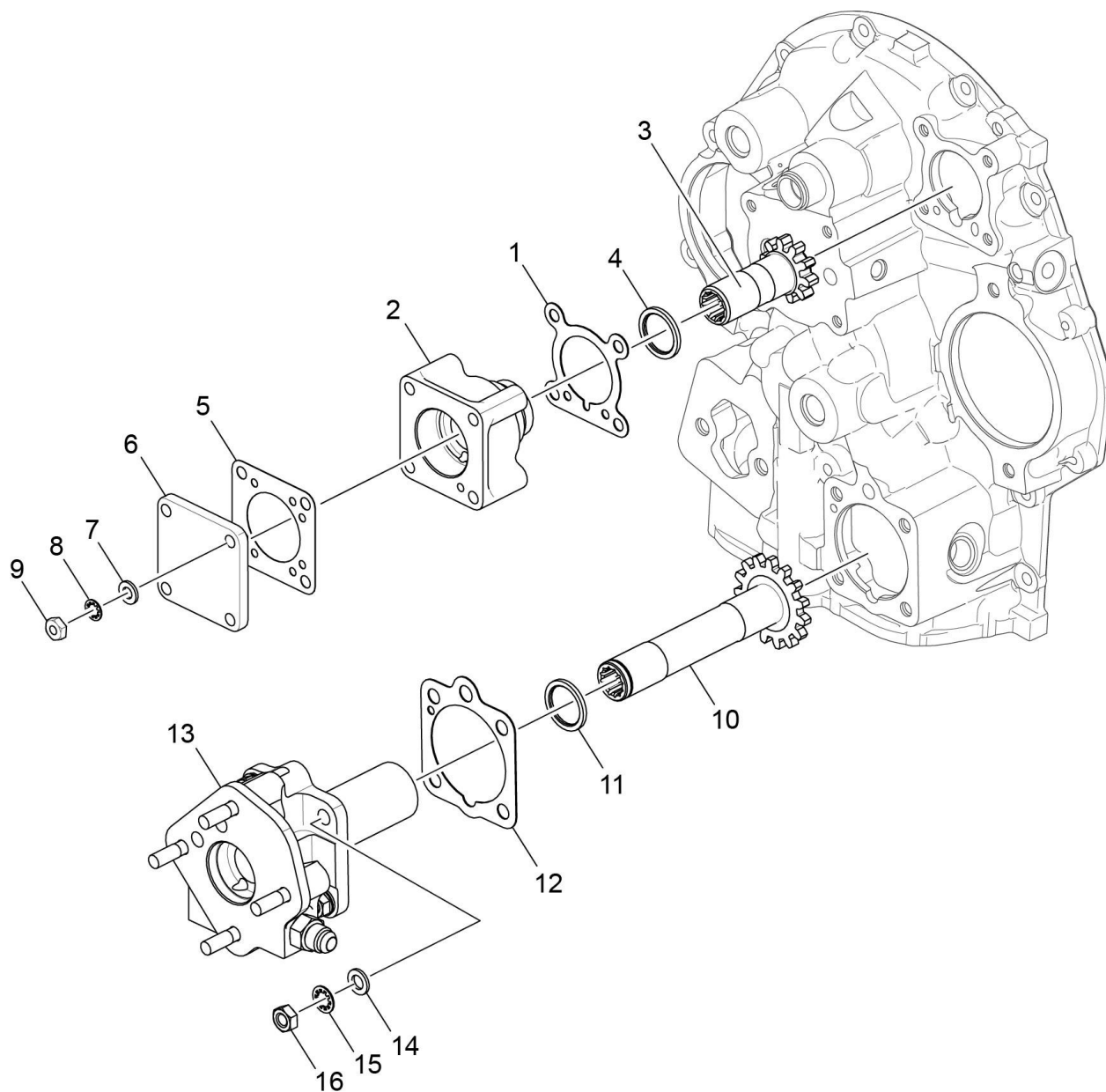


Figure 19
Vacuum Pump Drive and Cover and, Prop Governor Drive

Figure 19 – Vacuum Pump Drive and Cover and, Prop Governor Drive

Figure Item	Code	Part Number	Description	Units per Assembly
1		61183	GASKET, Vacuum pump	1
2		28F21254	ADAPTER ASSEMBLY, Vacuum pump	1
3		72970	GEAR ASSY., Vacuum pump driven	1
4		71596	WASHER, Accessory drive gear	1
5		8313	GASKET, Vacuum pump	1
6		60430	COVER, Vacuum pump	1
7		STD-8	WASHER, 1/4 plain	4
8		STD-160	WASHER, 1/4 lock, internal teeth	4
9		STD-1411	NUT, 1/4-20 plain	4
10		68317	SHAFTGEAR, Prop governor drive	1
11		71596	WASHER, Accessory drive gear	1
12		68315	GASKET, Accessory drive adapter	1
13		75153	ADAPTER ASSY, Prop governor driven	1
14		STD-35	WASHER, 5/16 plain	4
15		STD-475	WASHER, 5/16 lock, internal teeth	4
16		STD-1410	NUT, 5/16-18, plain	4

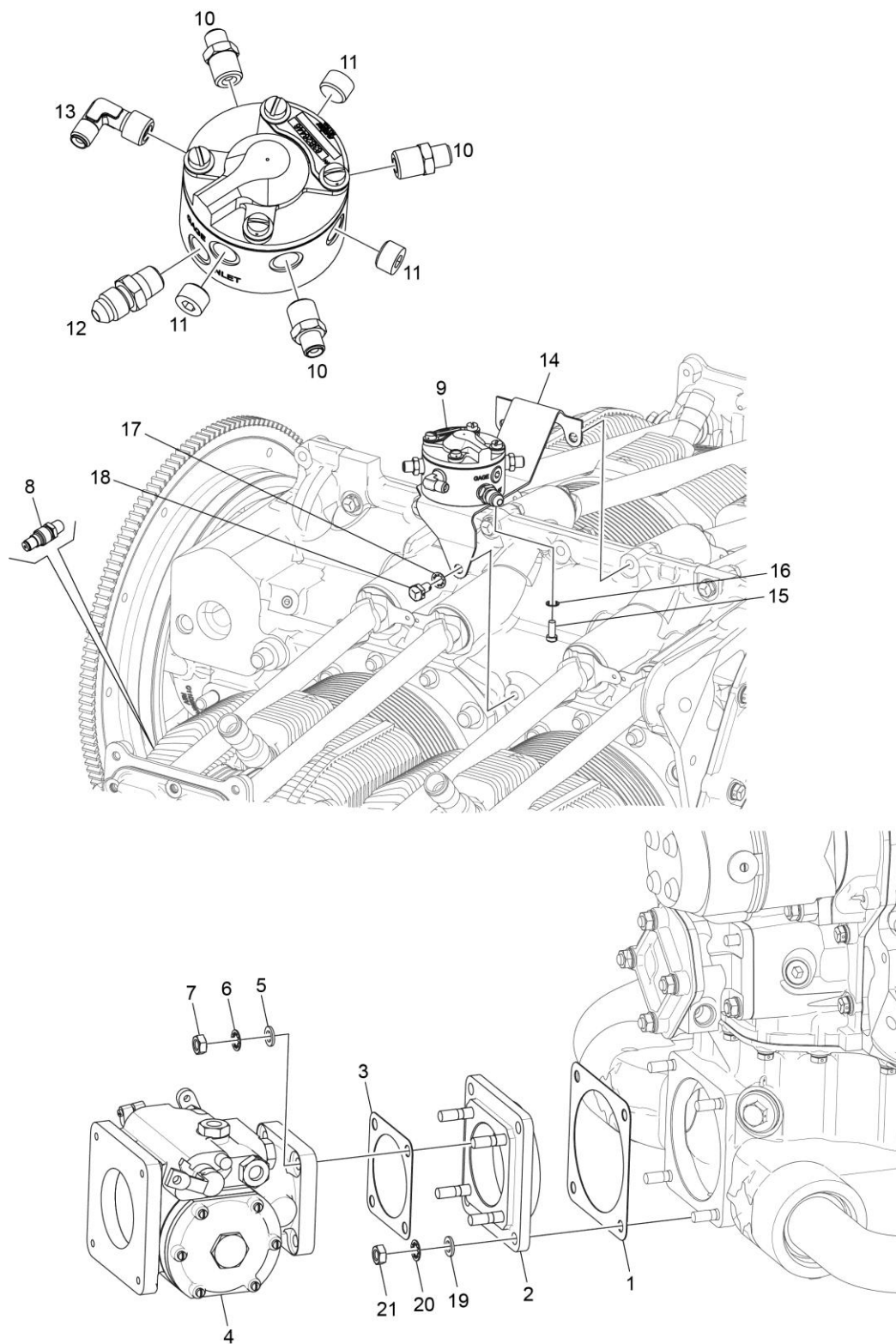


Figure 20
Fuel Injector, Fuel Manifold, and Injection Nozzles

Figure 20 - Fuel Injector, Fuel Manifold, and Injection Nozzles

Figure Item	Code	Part Number	Description	Units per Assembly
1		73032	GASKET, Air inlet housing	1
2		75130	ADAPTER ASSY, Fuel injector	1
3		66224	GASKET, Carburetor	1
4		61J26434	INJECTOR, Fuel RSA-5AD1 (AV 2524592-8)	1
5		STD-35	WASHER, 5/16 plain	4
6		STD-475	WASHER, 5/16 lock, internal teeth	4
7		STD-1410	NUT, 5/16-18 plain	4
8		63C26450	NOZZLE, Injection, low (AV 2524864-2)	4
9		63B26761	MANIFOLD ASSEMBLY, Fuel	1
10		STD-148	NIPPLE, Union, 1/8 NPT	3
11		1102	PLUG, 1/8-27 NPT, Allen head	3
12		AN816-4	NIPPLE, 1/8 NPT to 1/4 tube	1
13		STD-2166	ELBOW, Union, 1/8 NPT	1
14		75009	BRACKET, Fuel manifold	1
15		STD-82	SCREW, No.10-24 x 1/2 long, fill. head	4
16		STD-251	WASHER, No.10, internal lock	4
17		STD-160	WASHER, 1/4 lock, internal teeth	1
18		LW-25-0.50	BOLT, 1/4-20 x 1/2 long hex.	1
19		STD-35	WASHER, 5/16 plain	4
20		STD-475	WASHER, 5/16 lock, internal teeth	4
21		STD-1410	NUT, 5/16-18 plain	4

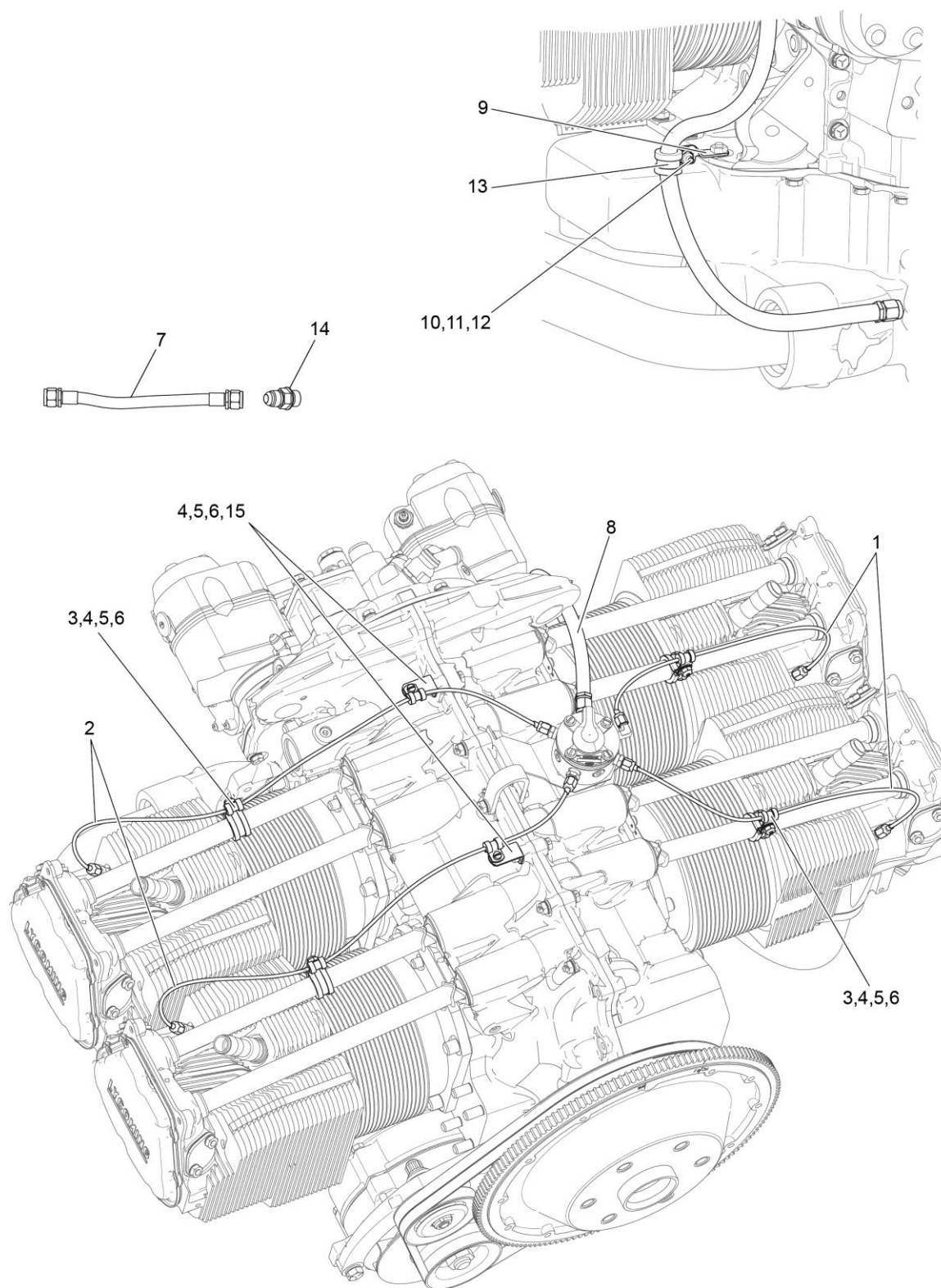


Figure 21
Fuel Lines and Attaching Parts

Figure 21 - Fuel Lines and Attaching Parts

Figure Item	Code	Part Number	Description	Units per Assembly
1		LW-12098-0-140	TUBE ASSEMBLY, Fuel line	2
2		LW-12098-0-210	TUBE ASSEMBLY, Fuel injector line	2
3		LW-16266-10-75	CLAMP	4
4		LW-16266-10-13	CLAMP, 1/8 diameter for No.10 screw	6
5		STD-860	SCREW, No. 10-32 x 5/8 long, fill. head	6
6		STD-670	LOCK NUT, No. 10-32	6
7		LW-12799-6S113	HOSE ASSEMBLY, 3/8 hose, straight	1
8		LW-12798-4S340	HOSE ASSEMBLY, 1/4 hose, straight	1
9		72815	BRACKET, Support clamp, 90°	1
10		STD-860	SCREW, No. 10-32 x 5/8 long, fill. head	1
11		STD-670	LOCK NUT, No. 10-32	1
12		STD-425	WASHER, No. 10 plain	3
13		LW-16266-25-50	CLAMP	1
14		LW-16562	NIPPLE, 3/8 flared tube, 9/16-18	1
15		73136	BRACKET, Extension, fuel injector	2

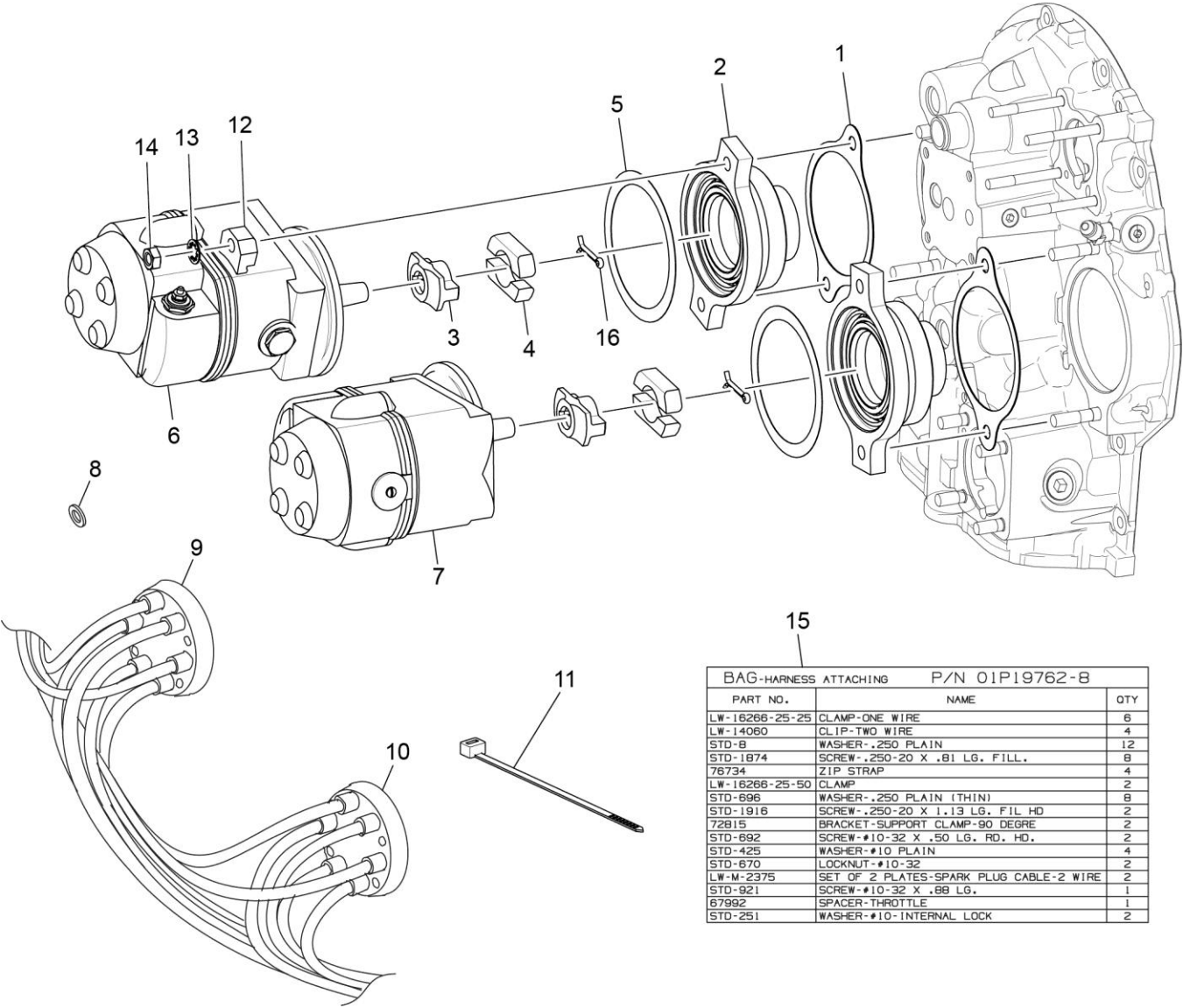


Figure 22
Magnetos, Magneto Drives and Harnesses

Figure 22 - Magnetos, Magneto Drives and Harnesses

Figure Item	Code	Part Number	Description	Units per Assembly
1		62224	GASKET, Magneto adapter	2
2		68N23130	ADAPTER ASSY, Magneto drive	2
3		LW-14910	COUPLING, Magneto drive	2
4		LW-14230	CUSHION, Magneto drive	4
5		LW-12681	GASKET, Magneto	2
6		66K22536	MAGNETO, Lasar, left (4766)	1
7		66K22445	MAGNETO, Lasar, right (4770)	1
8		STD-35	WASHER, 5/16 plain	2
9	V	67P20403	HARNESS ASSEMBLY, Slick, Left, V M2977	1
10	V	67P20400	HARNESS ASSEMBLY, Slick, Right, V M2976	1
11		76734	ZIP STRAP	3
12		66M21195	CLAMP, Magneto M3741	4
13		STD-475	WASHER, 5/16 lock, internal teeth	4
14		STD-1410	NUT, 5/16-18 plain	4
15		01P19762-8-45	BAG, Harness attaching	1
16		MS9245-44	PIN, 3/32 diameter x 5/8 long, cotter style D	2
V Vendor Prime Manufacturer part				

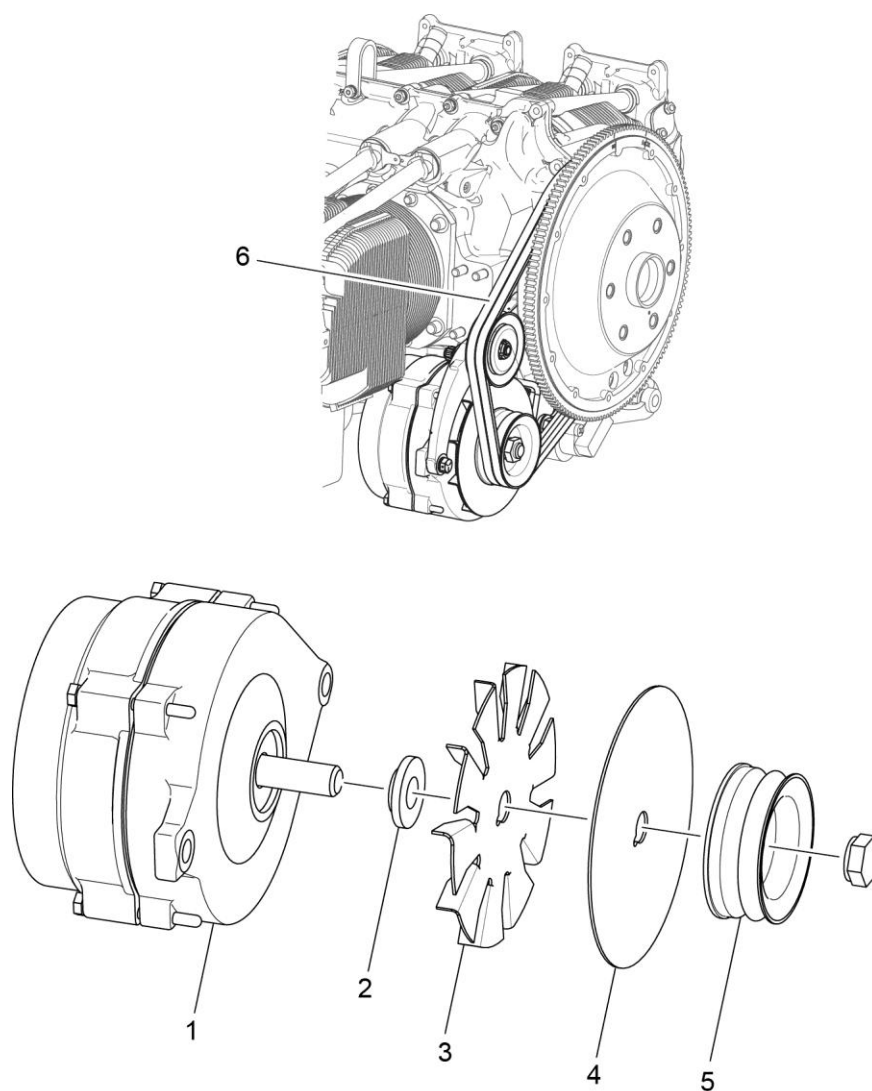


Figure 23
Alternator and Belts

Figure 23 – Alternator and Belts

Figure Item	Code	Part Number	Description	Units per Assembly
1		32C21703	ALTERNATOR ASSEMBLY, 28 volt, 130 amp	1
2		32F21674	SPACER, Alternator fan	1
3		32G21675	FAN, Alternator	1
4		32R21676	BACKPLATE, Alternator fan	1
5		32B21680	PULLEY, Alternator, dual belt	1
6		37A17773M396	SET OF 2, Belt, alternator drive, 3/8 wide	1
NOTICE: See latest revision of Lycoming Service Instruction No. 1154 for complete listing of FAA approved starters and alternators.				

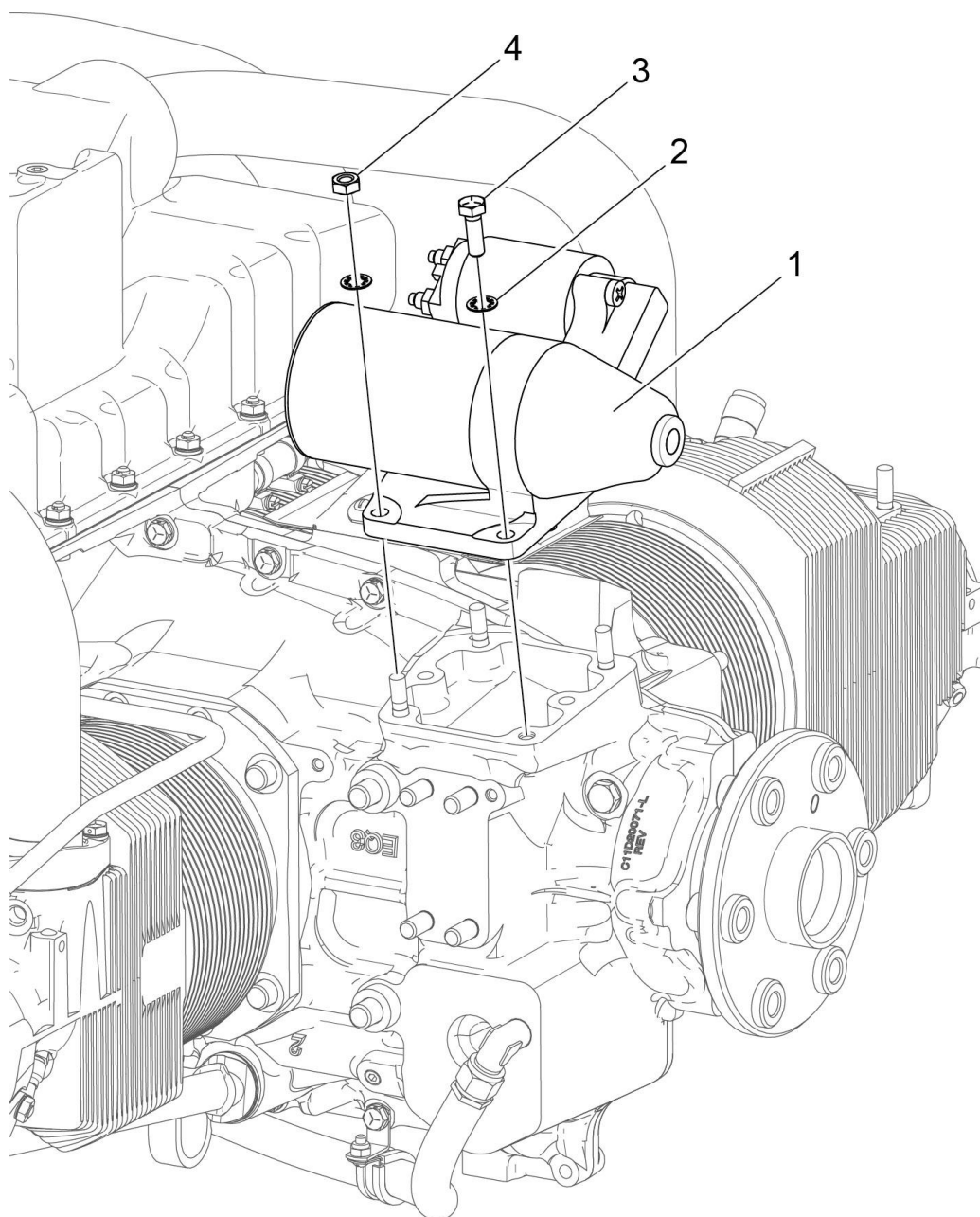


Figure 24
Starter Motor and Attaching Parts

Figure 24 - Starter Motor and Attaching Parts

Figure Item	Code	Part Number	Description	Units per Assembly
1	V	31B22101	STARTER, SKY-TEC 149-24PM	1
2		STD-475	WASHER, 5/16 lock, internal teeth	4
3		LW-31-0.94	BOLT, 5/16-18 x 15/16 long hex. head	1
4		STD-1410	NUT, 5/16-18 plain	3
V Vendor Prime Manufacturer part				
NOTICE: Refer to the latest revision of Service Instruction No. 1154 for complete listing of FAA-approved starters, alternators, generators, regulators and relays.				

This page intentionally left blank

Service Kit Section**Seal and Gasket Set**

PART NO.	PART NAME	Qty.
75441-1	KIT - SEAL AND GASKET SET	1
AN901-8A	GASKET, Metal tube connect seal	1
LW-12681	GASKET, Magneto	2
06B23862	GASKET, Oil filter adapter	1
LW-13353	GASKET, Oil sump	1
LW-13792	SEAL, Crankshaft, oil	1
LW-14260	SEAL, Tachometer drive, oil	1
LW-18639	LOCKPLATE, Crankshaft gear	1
LW-18661	SEAL, Shroud tube	16
STD-213	OIL SEAL, 3/4 I.D. x 1-3/8 O.D.	1
06A19956	OIL SEAL, 7/8 I.D. x 1-1/2 O.D. x 0.31	1
06E19769-0.63	GASKET, Annular, 5/8 I.D.	1
06E19769-1.00	GASKET, Annular, 1.00 I.D.	2
06E19769-1.25	GASKET, 1-1/4 I.D. x 1-1/2 O.D. x 3/32 annular	1
1691-C	GASKET, Fuel pump	2
60096	GASKET, Fuel pump	1
61173	GASKET, Oil pressure housing	1
61183	GASKET, Accessory adapter	1
62224	GASKET, Mag adapter	3
66224	GASKET, Carburetor	3
66732	GASKET, Valve rocker shaft cover	8
67193	GASKET, Rocker box cover	4
68129	GASKET, Carburetor	1
68315	GASKET, Accessory drive adapter	1
69164	GASKET, Fuel pump adapter	1
69551	GASKET, Accessory drive adapter	1
70455	GASKET, 25/32 I.D. x 1-1/8 O.D. x 0.030	1
71481	RING, Oil seal, 0.09 dia. x 4.84 I.D.	4
71973	GASKET, 2 bolt flange, 1.81 I.D.	4
72053	GASKET, Governor	1
72059	GASKET, Oil level gage	1
72075	SEAL, Oil, 0.090 section x 0.455 I.D.	6
72078	LOCKPLATE, 5/16 bolt x 1.33 spacing	2
72091	RING, Oil seal, 0.36 I.D. x 0.10 dia.	2
72829	LOCKPLATE, 1/4 bolt x 1-3/4 spacing	2
73032	GASKET, Air inlet housing	1
73383	LOCKPLATE, 5/16 bolt x 1.00 spacing	2

Seal and Gasket Set (Cont.)

PART NO.	PART NAME	Qty.
73817	LOCKPLATE, 1/4 bolt x 1-3/4 spacing	2
73818	GASKET, Accessory housing	1
74065	RING, Oil level gage seal	1
74068	RING, Oil level gage plug	1
75118	GASKET, Exhaust flange	8
76510	GASKET, Oil cooler by-pass valve	1
76940	SEAL, Crankshaft oil	1
77569	RING, Seal intake pipe	4
8313	GASKET, Vacuum pump	1
15H21201	SPRING, Shroud tube	16
06A23493	SEAL, Shroud tube	8
MS35489-20X	GROMMET	1
STD-2180	HOSE, 3/8 I.D. x 1.7/8 long	4
SSP-115	STICKER	1

Cylinder, Piston and Ring Assembly

Part No.	Part Name	Qty.
05K21120	KIT - CYLINDER, PISTON AND RING ASSEMBLY	1
LW-12993	CYLINDER ASSEMBLY	1
72343	STABILIZER, Cylinder head fins, 15	1
72344	STABILIZER, Cylinder head fins, 26	1
17A23937	VALVE, Intake	1
17B23935	VALVE, Exhaust	1
LW-13321	SEAT, Valve spring, lower intake	1
LW-13322	SEAT, Valve spring, lower exhaust	1
LW-11796	SPRING, Valve, outer	2
LW-11797	SPRING, Valve, inner	2
69532	SEAT, Valve spring, upper intake	1
LW-16475	SEAT, Valve spring, upper exhaust (rotator type)	1
72050	KEY, Valve intake	2
17C21191	KEY, Valve exhaust	2
MS20823-6D	ELBOW, 45 degree, 3/8 flared tube	1
62388	CAP, Valve stem	1
17C19386	CAP, Valve stem, exhaust (rotator type)	1
71481	RING, Oil seal, 3/32 diameter x 4-27/32 I.D.	1
14D23908	PISTON, 8.70:1	1
74241	RING, Piston, compression	2
14H21950	RING, Piston, oil, 5.125 bore	1
LW-14078	PIN, Piston	1
72198	PLUG, Piston pin	2
66732	GASKET, Valve rocker shaft cover	2
67193	GASKET, Rocker box cover	1
06A23493	SEAL, Shroud tube	2
LW-18661	SEAL, Shroud tube	4
SSP-299	TAG, Use of piston pin plugs	1
71195	CONTAINER	1
77611	GASKET, Exhaust flange	1
71973	GASKET, 2 bolt flange, 1.81 I.D.	1
1102	PLUG, 1/8 pipe	2
SSP-115	STICKER	1

This page intentionally left blank

Numerical Index

Part No.	Part Name	Page No.
AN310-7	NUT	1
AN6-34A	BOLT	13
AN7-44	BOLT	1
AN816-4	NIPPLE	43
AN816-6	NIPPLE	31
AN844-10D	ELBOW	39
AN960-616L	WASHER	13
LRT23381	BODY ASSEMBLY	5
LW-11713	SPRING	5
LW-11796	SPRING	19
LW-11797	SPRING	19
LW-12098-0-140	TUBE ASSEMBLY	45
LW-12098-0-210	TUBE ASSEMBLY	45
LW-12186	NUT	15
LW-12545	PLUG	31
LW-12681	GASKET	47
LW-12798-4S340	HOSE ASSEMBLY	45
LW-12799-6S113	HOSE ASSEMBLY	45
LW-12879-6S350	HOSE ASSY	29
LW-12993	CYLINDER ASSY	17
LW-13321	SEAT	19
LW-13322	SEAT	19
LW-13353	GASKET	31
LW-13792	SEAL	5
LW-13793	STUD	3
LW-13796	SHAFT	11
LW-13906	OIL FILTER	39
LW-14078	PIN	15
LW-14230	CUSHION	47
LW-14260	SEAL	35
LW-14637	SHIM	1
LW-14649	SHIM	1
LW-14650	SHIM	1
LW-14760	GAGE ASSEMBLY	29
LW-14820	RING	7
LW-14820	RING	8
LW-14875	BRACKET	29
LW-14910	COUPLING	47
LW-15592-5-05	CLAMP	25
LW-16266-10-13	CLAMP	45
LW-16266-10-75	CLAMP	29
LW-16266-10-75	CLAMP	45
LW-16266-25-50	CLAMP	45
LW-16475	SEAT	19
LW-16562	NIPPLE	45
LW-18085	SPRING	5
LW-18109	IMPELLER	35
LW-18110	IMPELLER ASSEMBLY	35
LW-18639	LOCKPLATE	8

Part No.	Part Name	Page No.
LW-18661	SEAL	19
LW-18840	CAMSHAFT ASSY	11
LW-19227	C'WEIGHT ASSY	7
LW-19227	C'WEIGHT ASSY	7
LW-19265	PULLEY-SHAFT ASSY	1
LW-25-0.50	BOLT	43
LW-25-0.94	BOLT	31
LW-25-0.94	BOLT	35
LW-25-0.94	BOLT	39
LW-25-1.13	BOLT	13
LW-25-1.13	BOLT	31
LW-25-1.13	BOLT	35
LW-25-1.25	BOLT	27
LW-25-1.44	BOLT	35
LW-25-1.50	BOLT	13
LW-25H1.00	BOLT	39
LW-25S1.50	BOLT	13
LW-31-0.94	BOLT	51
LW-31H0.88	BOLT	1
LW-31H0.88	BOLT	1
LW-31H0.88	BOLT	1
LW-31H0.88	BOLT	11
LW-31H1.22	BOLT	1
LW-38H1.19	BOLT	1
MS20822-6	ELBOW	29
MS20823-4	ELBOW	33
MS20823-6D	ELBOW	17
MS20823-8	ELBOW	39
MS9245-44	PIN	47
STD-1065	DOWEL	7
STD-1065	DOWEL	7
STD-1211	PLUG	7
STD-1211	PLUG	7
STD-1410	NUT	3
STD-1410	NUT	17
STD-1410	NUT	41
STD-1410	NUT	43
STD-1410	NUT	43
STD-1410	NUT	47
STD-1410	NUT	51
STD-1411	NUT	13
STD-1411	NUT	23
STD-1411	NUT	31
STD-1411	NUT	41
STD-1420	NUT	35
STD-148	NIPPLE	43
STD-160	WASHER	13
STD-160	WASHER	23

Numerical Index (Cont.)

Part No.	Part Name	Page No.	Part No.	Part Name	Page No.
STD-160	WASHER	27	STD-670	LOCK NUT	45
STD-160	WASHER	31	STD-678	WASHER	13
STD-160	WASHER	35	STD-684	NIPPLE	25
STD-160	WASHER	39	STD-692	SCREW	25
STD-160	WASHER	41	STD-692	SCREW	29
STD-160	WASHER	43	STD-713	PIN	1
STD-1623	INSERT	3	STD-783	PLUG	31
STD-1727	WASHER	1	STD-784	PLUG	29
STD-1882	SCREW	37	STD-784	PLUG	33
STD-1925	SCREW	23	STD-784	PLUG	39
STD-2090	NUT	23	STD-8	WASHER	13
STD-2166	ELBOW	43	STD-8	WASHER	13
STD-2168	NUT	11	STD-8	WASHER	27
STD-2180	HOSE	25	STD-8	WASHER	31
STD-2221	NUT	1	STD-8	WASHER	35
STD-2231	RING	11	STD-8	WASHER	39
STD-2246	BOLT	8	STD-8	WASHER	41
STD-2249	NUT	13	STD-82	SCREW	43
STD-251	WASHER	43	STD-860	SCREW	45
STD-33	WASHER	1	STD-860	SCREW	45
STD-33	WASHER	13	STD-872	NUT	13
STD-33	WASHER	13	25C-22	STUD	33
STD-33	WASHER	37	25C-8	STUD	17
STD-35	WASHER	1	31C-12	STUD	3
STD-35	WASHER	1	31C-12	STUD	17
STD-35	WASHER	3	31C-12	STUD	31
STD-35	WASHER	17	31C-12	STUD	33
STD-35	WASHER	35	31C-13	STUD	3
STD-35	WASHER	41	31C-16	STUD	33
STD-35	WASHER	43	31CD-17	STUD	33
STD-35	WASHER	43	38-13	STUD	3
STD-35	WASHER	47	38-22	STUD	3
STD-425	WASHER	45	383-B	NUT	23
STD-475	WASHER	3	38D-17	STUD	3
STD-475	WASHER	17	50-15	STUD	3
STD-475	WASHER	41	1028-B	BALL	5
STD-475	WASHER	43	1102	PLUG	3
STD-475	WASHER	43	1102	PLUG	17
STD-475	WASHER	47	1102	PLUG	31
STD-475	WASHER	51	1102	PLUG	33
STD-514	DOWEL	3	1102	PLUG	43
STD-551	PLUG	31	1182-E7	SPARK PLUG	23
STD-557	DOWEL	3	1540	PLUG	39
STD-569	WASHER	1	8313	GASKET	41
STD-596	NUT	13	60096	GASKET	37
STD-632	WASHER	1	60430	COVER	41
STD-670	LOCKNUT	25	60803	STRAP	13
STD-670	LOCKNUT	29	61084	SPRING	5
STD-670	LOCK NUT	45	61174	SHAFT	35

Numerical Index (Cont.)

Part No.	Part Name	Page No.	Part No.	Part Name	Page No.
61183	GASKET	41	72797	ROLLER	7
61400	STUD	31	72797	ROLLER	8
61503	SLEEVE	19	72815	BRACKET	45
62224	GASKET	47	72834	COVER	25
62388	CAP	19	72970	GEAR ASSY	41
62417	PLUG	39	73027	TUBE ASSEMBLY	25
66224	GASKET	43	73032	GASKET	43
66670	BUSHING	17	73136	BRACKET	45
66728	WASHER	19	73772	NOZZLE ASSY	3
66732	GASKET	23	73818	GASKET	33
66796	INSERT	17	74068	RING	29
67193	GASKET	23	74241	RING	15
68315	GASKET	41	74389	BUSHING	23
68317	SHAFTGEAR	41	74389	BUSHING	23
68668	SPRING	5	74808	TUBE ASSEMBLY	25
68795	COVER ASSY	23	74887	SPACER	23
69532	SEAT	19	74977	SUPPORT ASSEMBLY	8
69796	DOWEL	3	74996	GEAR ASSEMBLY	11
70484	SCREEN	31	75009	BRACKET	43
71140	FITTING	39	75060	BOLT	15
71481	RING	23	75072	GEAR ASSEMBLY	11
71549	WASHER	23	75130	ADAPTER ASSY	43
71596	WASHER	41	75153	ADAPTER ASSY	41
71596	WASHER	41	75154	STUD	3
71610	HOOK	25	75155-S	BUSHING	7
71611	RETAINER	25	75338	BAFFLE ASSEMBLY	25
71903-A	BUSHING	7	75656-S	BUSHING	7
71903-A	BUSHING	7	75657-S	BUSHING	7
71907	WASHER	7	75657-S	BUSHING	7
71907	WASHER	8	75736	TUBE	29
71973	GASKET	27	75739	NIPPLE	29
72050	KEY	19	76118	SPACER	11
72053	GASKET	3	76121	SHAFT ASSEMBLY	11
72059	GASKET	29	76220	STUD	13
72075	SEAL	5	76734	ZIP STRAP	47
72091	RING	5	77450-S	CONN. ROD ASSY	15
72155-S	BUSHING	7	77467	SPRING	5
72198	PLUG	15	77569	RING	27
72255	SHR'D TUBE ASSY	19	77611	GASKET	17
72343	STABILIZER	17	77808	VALVE ASSEMBLY	5
72344	STABILIZER	17	78531	BODY ASSEMBLY	35
72378	COVER	3	78981	PIPE	27
72566	GEAR	8	78982	PIPE	27
72626	SHAFT	23	78983	PIPE	27
72656-S	BUSHING	7	78984	PIPE	27
72702	TUBE ASSEMBLY	25	01L23459	WASHER	19
72703	TUBE ASSEMBLY	25	01P19762-8-45	BAG	47
72710	COVER	23	05K19423-S	IMPELLER KIT	35

Numerical Index (Cont.)

Part No.	Part Name	Page No.
06A23493	SEAL	19
06B21644	GASKET	39
06E19769-0.63	GASKET	39
06E19769-0.63	GASKET	39
06E19769-1.00	GASKET	31
06E19769-1.25	GASKET	5
07A21156	BRACKET	1
07A21157	BRACKET	1
07A26130	BRACKET	1
07F21160	STRUT	1
11D22560-5	CRANKCASE ASSY	3
13B47219	C'SH'T-BUSH'G ASSY	7
13B47234	C'SH'T-BUSH'G ASSY	7
13S19646	GEAR	8
14D23908	PISTON	15
14H21950	RING	15
14W21696	ROLLER	7
14W21696	ROLLER	8
15B21319	SOCKET	19
15B26066	PLUNGER ASSEMBLY	19
15B26262	BODY	5
15F19957-51	ROD ASSEMBLY	19
15F19957-52	ROD ASSEMBLY	19
15F19957-53	ROD ASSEMBLY	19
15F19957-54	ROD ASSEMBLY	19
15F19957-55	ROD ASSEMBLY	19
15F19957-56	ROD ASSEMBLY	19
15F19957-57	ROD ASSEMBLY	19
15F19957-58	ROD ASSEMBLY	19
15F21362-17	ROD ASSEMBLY	20
15F21362-18	ROD ASSEMBLY	20
15F21362-19	ROD ASSEMBLY	20
15F21362-20	ROD ASSEMBLY	20
15F21362-21	ROD ASSEMBLY	20
15F21362-22	ROD ASSEMBLY	20
15F21362-23	ROD ASSEMBLY	20
15F21362-24	ROD ASSEMBLY	20
15G23462	SHR'D TUBE ASSY	19
15H21201	SPRING	19
15M23452	CAMSHAFT ASSY	11
17A23937	VALVE	19
17B23935	VALVE	19
17C19386	CAP	19
17C21191	KEY	19
17F21187	ROCKER ASSEMBLY	23
17F21188	ROCKER ASSEMBLY	23
18A26093	BEARING	5
18D26098	BEARING	5
18M23887	BEARING	15

Part No.	Part Name	Page No.
21A21533-23	ACC'Y HOUS'G ASSY	33
21M23736	COVER	39
23D26777	PLUNGER	11
28F21254	ADAPTER ASSEMBLY	41
31B22101	STARTER	51
32B21680	PULLEY	49
32C21703	ALTERNATOR ASSY	49
32F21674	SPACER	49
32G21675	FAN	49
32R21676	BACKPLATE	49
37A17773M396	SET OF 2 BELTS	49
53E22144	VALVE ASSEMBLY	39
54J21208	ADAPTER ASSY	39
56A22730	SUMP ASSEMBLY	31
61J26434	INJECTOR	43
62B26931	FUEL PUMP	37
63B26761	MANIFOLDASSEMBLY	43
63C26450	NOZZLE	43
66K22445	MAGNETO	47
66K22536	MAGNETO	47
66M21195	CLAMP	47
67P20400	HARNESS ASSEMBLY	47
67P20403	HARNESS ASSEMBLY	47
68N23130	ADAPTER ASSY	47

Numerical Index

Page 60

July 2016

Effectivity: IO-360-C1G6 Engine

Copyright, Lycoming Engines

Lycoming Engines is a division of Avco Corporation