



652 Oliver Street
Williamsport, PA. 17701 U.S.A.

Telephone +1 (800) 258-3279 (U.S. and Canada)
Telephone +1 (570) 323-6181 (International)
Facsimile +1 (570) 327-7101
Email Technicalsupport@lycoming.com

www.lycoming.com

SERVICE INSTRUCTION

DATE: August 23, 2018

Service Instruction No. 1571
Engineering Aspects are
FAA Approved

SUBJECT: Lockplate installation for Induction Housing on TIO-540-AJ1A and IO-540-AC1A5

MODELS AFFECTED: TIO-540-AJ1A, IO-540-AC1A5

TIME OF COMPLIANCE: Required at next Overhaul, or at owner's discretion.

NOTICE: Incomplete review of all the information in this document can cause errors. Read the entire Service Instruction to make sure you have a complete understanding of the requirements.

This Service Instruction details installation procedure for an Induction Housing Lockplate on affected Lycoming models, and is a product improvement being incorporated to subsequent production of affected engines. Read the entire Service Instruction to make sure you have a complete understanding of the requirements.

Part I – Installation Instructions for Induction Housing Lockplate

1. Remove Bolt **(B)** from the Induction Housing Support **(A)** shown in Figure 1.
2. Remove and discard both washers from the removed bolt **(B)**.
3. Place a new Lockplate (Lycoming P/N LW-12272) onto the bolt, oriented so that the open side of the “J” shape made by the unbent Lockplate faces away from the head of the bolt; as shown in figures 2 and 3.
4. Reinstall, and tighten Bolt **(B)** using a torque wrench to 96 in.-lb. (11 Nm). If necessary, continue to tighten until next flat of the bolt head aligns with the Lockplate as shown in figures 2 and 3.
5. Gently bend the tab of the Lockplate towards the head of bolt **(B)**, until it is firmly seated against an edge of bolt **(B)** as shown in Figures 2 and 3.

NOTE

Bolts at locations **(C)** do not require Lockplates, and are not affected by Lycoming S.I. 1571.

PART II- Replacement Instructions for Induction Housing Lockplate

If for any reason the Lockplate P/N LW-12272 is damaged, unbent, or removed from the Induction Housing Mount, the used Lockplate must be discarded, and a new Lockplate P/N LW-12272 must be installed per the instructions detailed in Part 1 of this Service Instruction.



ISSUED			REVISED			PAGE NO.	REVISION
MO	DAY	YEAR	MO	DAY	YEAR		
08	23	18	--	--	--	1 of 2	--

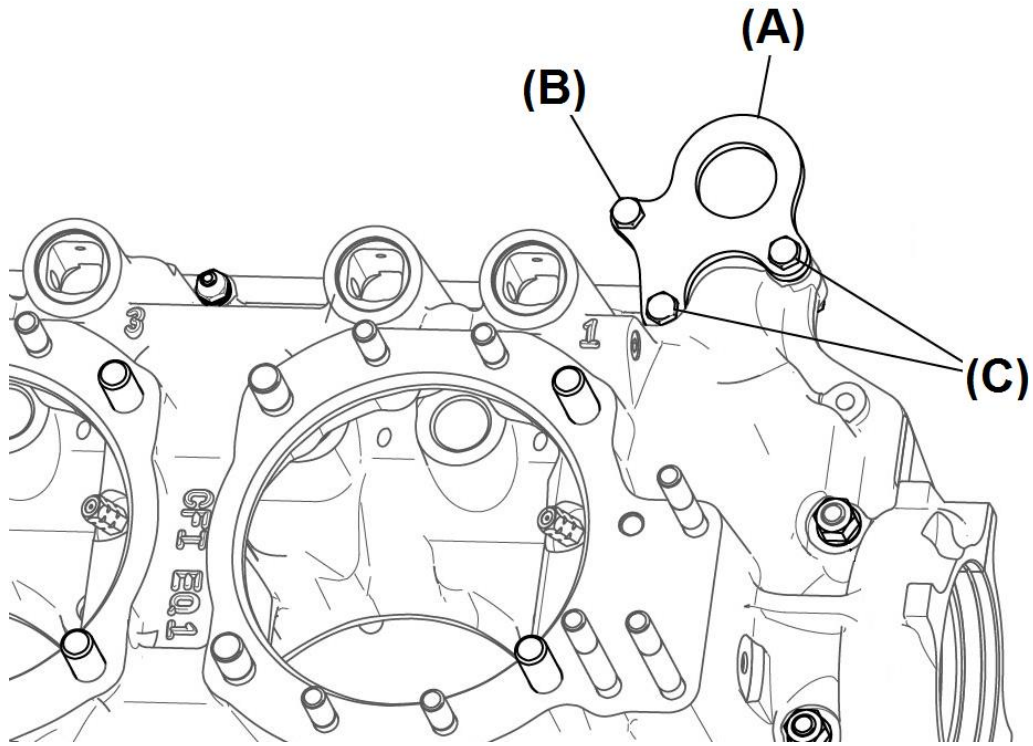
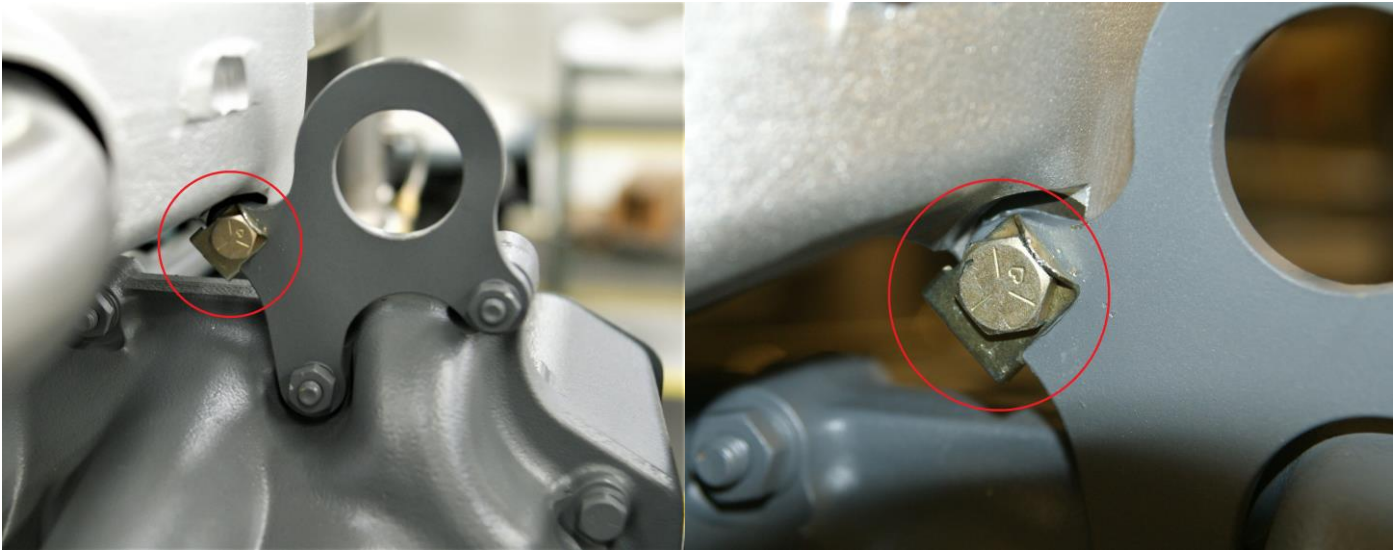


Figure 1: Schematic of Induction Housing Support and Attaching Bolts.



Figures 2 and 3: Installed Lockplate (Lycoming P/N LW-12272) with Bolt (Lycoming P/N LW-25-1.13) on Induction Housing Support (Lycoming P/N 07E22596).

ISSUED			REVISED			PAGE NO.	REVISION	S.I. 1571
MO	DAY	YEAR	MO	DAY	YEAR			
08	23	18	--	--	--	2 of 2	--	