

# **O-320-E2B, -E2C Series Illustrated Parts Catalog**

---

**December 2011**

**PC-203-5**

---

***LYCOMING*** © 2011

652 Oliver Street  
Williamsport, PA 17701

## **O-320-E2B, -E2C Illustrated Parts Catalog**

Lycoming Part Number: PC-203-5

©2011 by Avco Corporation. All Rights Reserved.

Lycoming and "Powered by Lycoming" are trademarks or registered trademarks of Lycoming.

Lycoming Engines is a division of Avco Corporation

All brand and product names referenced in this publication are trademarks or registered trademarks of their respective companies.

### **For additional information:**

#### **Mailing address:**

Lycoming Engines  
652 Oliver Street  
Williamsport, PA 17701 U.S.A.

#### **Phone:**

Factory: 570-323-6181  
Sales Department: 570-327-7278  
Fax: 570-327-7101

Lycoming's regular business hours are Monday through Friday from 8:00 A.M. through 5:00 P.M. Eastern Time (-5 GMT)

Visit us on the **World Wide Web** at:

<http://www.lycoming.com>

**\*\*\*\*\*NOTICE\*\*\*\*\***

This parts catalog is the fifth of eight other forthcoming parts catalogs associated with O-320 engine model series as shown in the table below.

Parts Catalog Number	Engine Models
PC-203-1	O-320-A2B, -A3B
PC-203-2	O-320-A2C, -A2D
PC-203-3	O-320-E1A, -E2A
PC-203-4	O-320-E1F, -E2F
PC-203-5	O-320-E2B, -E2C
PC-203-6	O-320-E2D, -E3D
PC-203-7	O-320-E2G
PC-203-8	O-320-E2H, -E3H

**NOTE:** Service documents override parts information in this document.

**RECORD OF REVISIONS**

Rev No.	Issue Date	Initials	Insertion Date

This page intentionally left blank.

**LIST OF EFFECTIVE PAGES**

<b><u>Ch-Se-Su</u></b>	<b><u>Pages</u></b>	<b><u>Date</u></b>	<b><u>Ch-Se-Su</u></b>	<b><u>Pages</u></b>	<b><u>Date</u></b>
24-20.....	0-1.....	12/11	73-10 .....	40-41 .....	12/11
72-20.....	2-11.....	12/11	74-20 .....	42-49 .....	12/11
72-30.....	12-23.....	12/11	80-10 .....	50-51 .....	12/11
72-50.....	24-27.....	12/11	Service Kits.....	52-55 .....	12/11
72-60.....	28-39.....	12/11	Numerical Index...	56-59 .....	12/11

This page intentionally left blank.

**TABLE OF CONTENTS**


<b><u>Subject</u></b>	<b><u>Ch-Se-Su</u></b>	<b><u>Page</u></b>	<b><u>Date</u></b>
<b>Frontal</b>			
Record of Revisions .....	iii	12/11	
List of Effective Pages.....	v	12/11	
Table of Contents .....	vii	12/11	
Introduction .....	ix	12/11	
Abbreviations and Acronyms .....	xiii	12/11	
Oversize and Undersize Part Listing .....	xv	12/11	
<b>Electrical Power</b> .....	<b>24-00</b>		
<b>AC Generation</b> .....	<b>24-20</b>		
1. Alternator-Mounting-and-Attaching-Parts.....	0-1	12/11	
<b>Reciprocating Engine</b> .....	<b>72-00</b>		
<b>Power Section</b> .....	<b>72-20</b>		
1. Crankcase-Assembly .....	2-3	12/11	
2. Crankcase-Related-Parts .....	4-5	12/11	
3. Crankshaft-Assembly-and-Related-Parts.....	6-7	12/11	
4. Crankshaft-Idler-Gears,-Tachometer-Drive-and-Camshaft .....	8-9	12/11	
5. Crankcase-Attaching-Parts .....	10-11	12/11	
<b>Cylinder Section</b> .....	<b>72-30</b>		
1. Connecting-Rods,-Pistons-and-Ring-Assemblies .....	12-13	12/11	
2. Cylinder-Assembly .....	14-15	12/11	
3. Valve-Assembly-and-Related-Parts .....	16-17	12/11	
4. Cylinder-Related-Parts .....	18-19	12/11	
5. Cylinder-Head-Drain-Tubes and -Intercylinder-Cooling-Baffles.....	20-21	12/11	
6. Intake-Pipes-and-Attaching-Parts .....	22-23	12/11	
<b>Lubrication System</b> .....	<b>72-50</b>		
1. Oil-Level-Gage .....	24-25	12/11	
2. Oil-Sump-Assembly-and-Oil-Suction-Screen .....	26-27	12/11	
<b>Accessory Drives</b> .....	<b>72-60</b>		
1. Accessory-Housing-Assembly .....	28-29	12/11	
2. Oil-Pump-Assembly-and-Accessory-Housing-Attaching-Parts .....	30-31	12/11	
3. Fuel-Pump-Assembly-and-Attaching-Parts .....	32-33	12/11	
4. Propeller-Governor-Drive-Cover,-Vacuum-Pump-Drive-and-Cover .....	34-35	12/11	

<b><u>Subject</u></b>	<b><u>Ch-Se-Su</u></b>	<b><u>Page</u></b>	<b><u>Date</u></b>
<b>Accessory Drives (Cont.)</b> .....	72-60		
5. Oil-Cooler-Bypass-Valve,- Oil-Pressure-Screen-and-Breather-Fitting .....	36-37 .....	12/11	
6. Oil-Filter-Assembly-and-Oil-Cooler-Bypass-Valve .....	38-39 .....	12/11	
<b>Engine and Fuel Control</b> .....	<b>73-00</b>		
<b>Fuel Distribution</b> .....	73-10		
1. Carburetor-Assembly .....	40-41 .....	12/11	
<b>Ignition Distribution System</b> .....	<b>74-00</b>		
<b>Distribution</b> .....	74-20		
1. Magnetos,-Magneto-Drives,-Harnesses-and-Spark-Plugs-(-E2B) .....	42-43 .....	12/11	
2. Magnetos,-Magneto-Drives,-Harnesses-and-Spark-Plugs-(-E2C) .....	44-47 .....	12/11	
2. Alternator-Assembly-and-Belt .....	48-49 .....	12/11	
<b>Starting</b> .....	<b>80-00</b>		
<b>Cranking</b> .....	80-10		
1. Starter-Motor-and-Attaching-Parts .....	50-51 .....	12/11	
<b>Back Section</b> .....			
<b>Service Kit Section</b> .....	52-55 .....	12/11	
<b>Numerical Index</b> .....	56-59 .....	12/11	



# INTRODUCTION



** CAUTION:** DO NOT USE THIS CATALOG AS AN ASSEMBLY OR INSTALLATION DOCUMENT. THIS CATALOG MUST ONLY BE USED TO IDENTIFY PARTS IN CONJUNCTION WITH THE APPLICABLE OVERHAUL MANUAL.

## Purpose of this Catalog

This Illustrated Parts Catalog (IPC) contains a complete list of spare parts for the Lycoming O-320-E2B, -E2C wide cylinder flange model engines.

## How to Use this Catalog

This catalog is based on the Air Transport Association (ATA) Spec100 format. In order to clarify illustrations, Lycoming has taken discretion to classify non-system related assemblies and components in the same chapters, because they are physically connected.

This catalog is frequently updated by Service Bulletins (SB) and Service Instructions (SI). The updated information will be incorporated into subsequent full revisions of this catalog.

The ATA two element numbering system provides consistency throughout various manuals. The bottom of each page (beyond the frontal section) contains a two element number (##-##). In the two element numbering, the first two digits represent a chapter, and the next two digits subdivide the material into a more specific section.

The ATA 100 format specifies the subject matter for each chapter-section. According to the ATA Standards, the following chapters apply to the O-320-E2B, -E2C Illustrated Parts Catalog.

72 (Reciprocating Engine), 73 (Engine and Fuel Control), 74 (Ignition), and 76 (Engine Controls).

**EXAMPLE:**      **74**      —      **20**  
Chapter                      Section  
**Ignition**                      **Distribution**

**NOTE:** See the IPC Table of Contents for the sub-systems listed in each section.

## Numerical Index

The Numerical Index is a single list of part numbers, names and their locations within the IPC. It is useful for locating parts when you only know the number or name of the part.

### Description column

Indentation of a part name represents a lower level of assembly. Attaching parts have the same indentation level and are listed below the parts grouping or assembly they attach to. This column is often referred to as the “Nomenclature” on other ATA Spec manuals.

**Units per Assembly Column**

Where more than one assembly exists, this column contains the quantity of a specific part required in the build sequence of only one next higher assembly. The letters "AR" represent "as required" for bulk items or non-illustrated select-from-range-parts. "RF" represents items listed for reference purposes only.

**Cross Reference List of Manufacturer Parts to Standard Part Numbers****Vendor Accessories**

Parts coverage of Vendor Accessories used on Lycoming engines may be found in the appropriate Vendor's Parts Catalog. A list of vendor's addresses appears in the latest revision of Lycoming Service Letter No. L114.

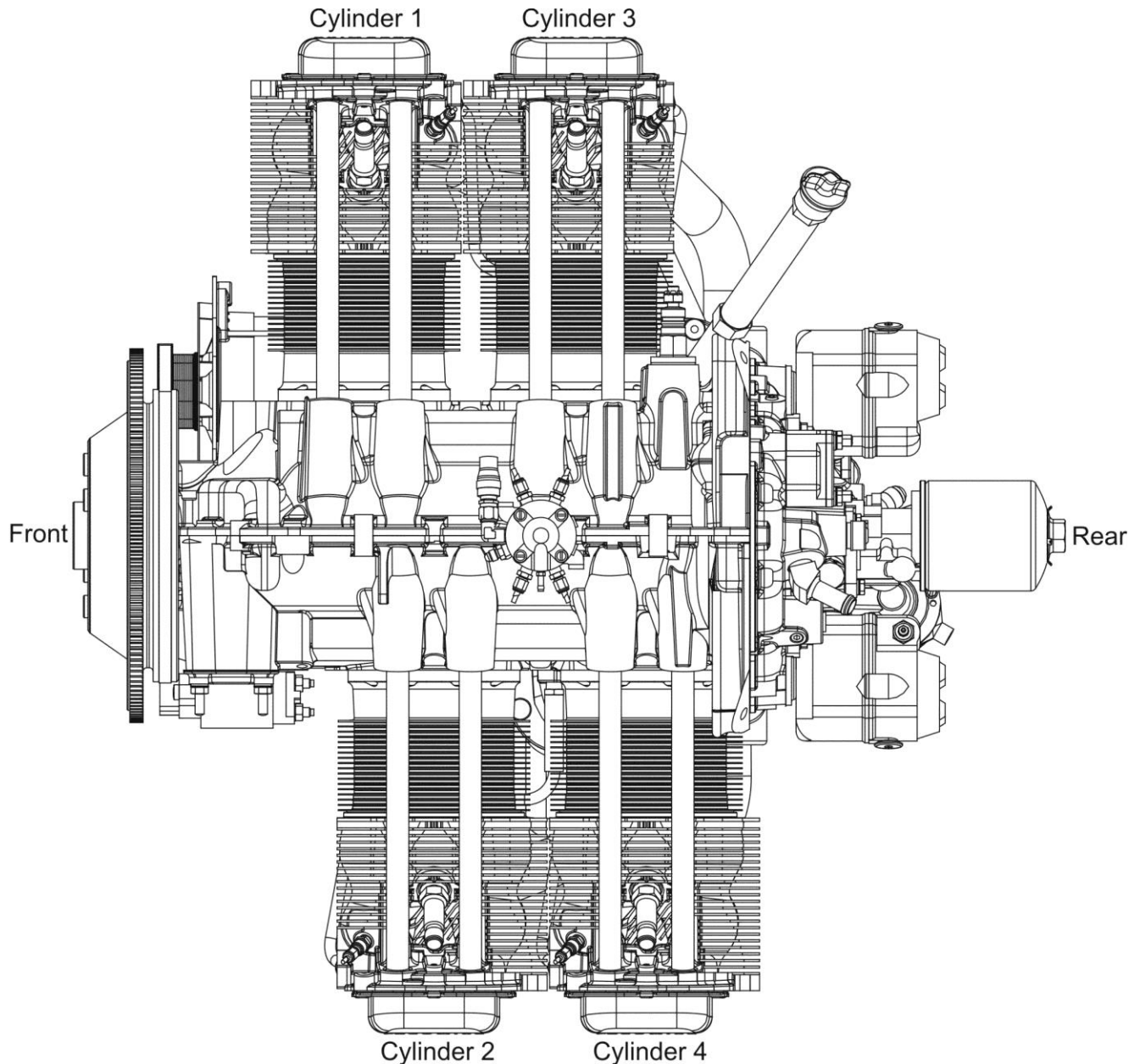
Any reference in this document to the suppliers/part manufacturer's product, by name, trademark, part number or other description is solely for the purpose of identification and does not indicate or infer that Lycoming accepts responsibility for quality control and/or airworthiness of parts, which do not pass through the Lycoming quality control system.

**Environmental Compliance**

Lycoming is concerned with preserving the environment. Lycoming strongly urges engine owners and repair/overhaul personnel to observe and comply with all federal, state, and local environmental regulations when solvents, paint, fuel, oil, chemicals, or other consumables are used in operating, maintaining, or overhauling an engine component. Please share our concern for, and commitment to a clean earth, clean water, and especially clean air for succeeding generations of flyers.

**Perspective of References**

In this manual, all references to locations of various components will be designated as if viewing the engine from the rear (or anti-propeller) end. The front of the engine is considered to be the propeller end and the oil sump is considered to be on the bottom of the engine. Cylinders are numbered from front to rear with the odd-numbered cylinders on the right-hand side. The firing order for this engine is 1-3-2-4

**Top View of Engine**

**How to Order Parts and Publications**

An Oversize and Undersize Parts List is included in the front section of this catalog, to aid in ordering parts as necessary during overhaul.

Although the information contained in this parts catalog is up-to-date at time of publication, users are advised to procure current information through all Lycoming distributors or from the factory by subscription. Refer to the latest revision of Service Letter No. L114 for subscription information.

1. In order to expedite correct part shipments without delay:
  - a. Always specify the model and serial number of your engine.
  - b. Always specify the part number, nomenclature, and quantity required.

The SB and SI documents are available from Lycoming distributors, or the factory, or by subscription.

Full Revisions of the Illustrated Parts Catalog are available from Lycoming distributors or the factory.

Every effort has been made in preparing this manual to ensure its accuracy. However, any comments, suggestions, or corrections to this manual are welcome and must be directed in writing to:

**Technical Publications Coordinator**  
**Lycoming Engines**  
**652 Oliver Street**  
**Williamsport, PA 17701**

**NOTE:** The owner of the manual must give notification to the factory for a change of address.

Additionally, Lycoming has a Customer Service Hot Line for information and assistance to owners, operators, and maintenance personnel which are servicing Lycoming engines.

Call **(570) 323-6181**

8:00 A.M. – 5:00 P.M. EST (-5GMT)

Monday – Friday.

©2011 by Lycoming. "All Rights Reserved." All Lycoming publications are to be considered copyrighted and may not be reproduced without permission of the company.

**ABBREVIATIONS AND ACRONYMS**

A	
Adj.	Adjustable
C	
Cyl.	Cylinder
D	
Dia.	Diameter
F	
Fill.	Fillister
H	
Hex.	Hexagon
I	
I.D.	Inside Diameter
N	
No.	Number
O	
O.D.	Outside Diameter
S	
Scav.	Scavenge
T	
Temp.	Temperature
V	
Vac.	Vacuum

This page intentionally left blank.

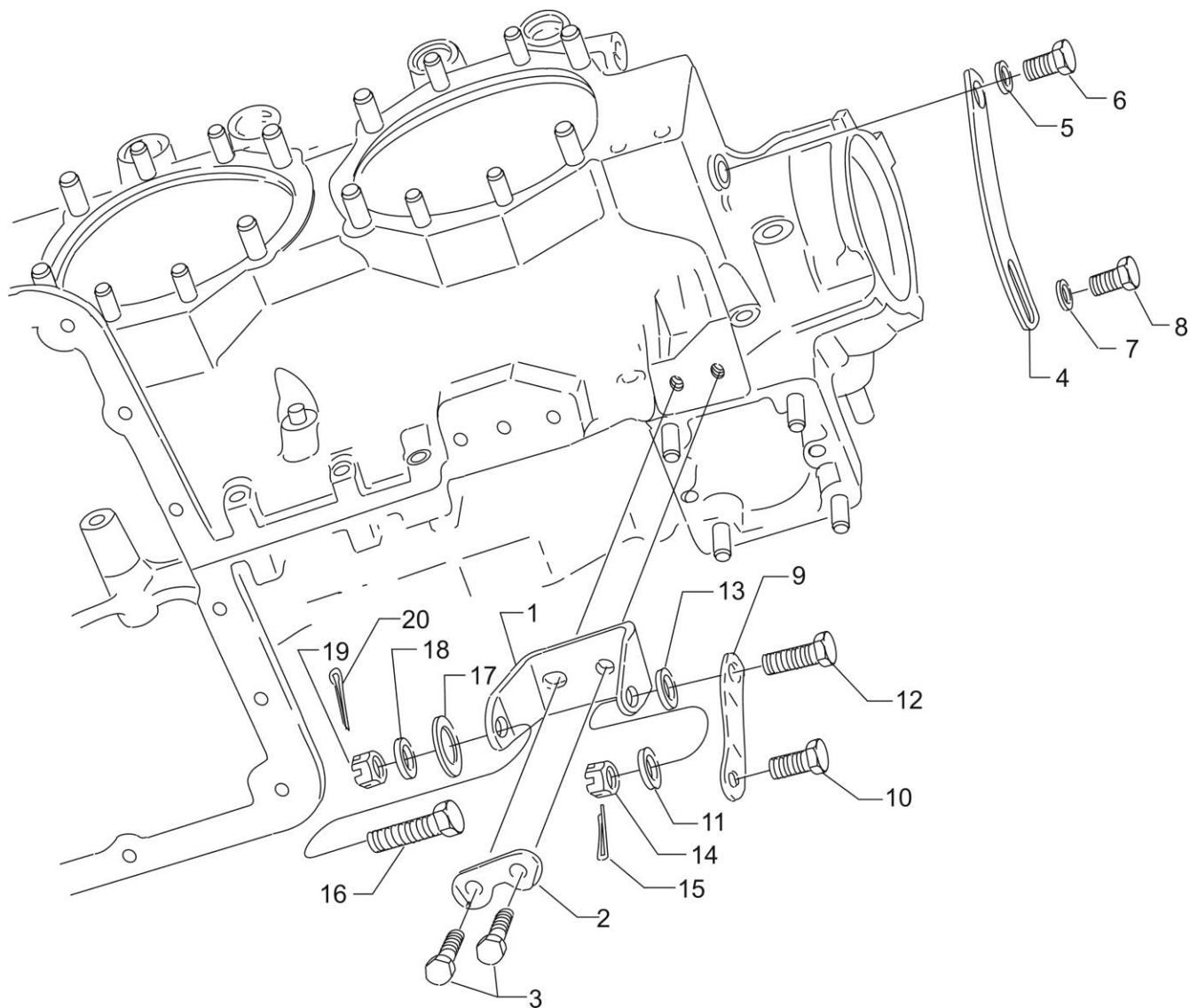
**OVERSIZE AND UNDERSIZE PARTS LISTING**

Part No.	Description	Oversize (in.)								Undersize (in.)		
		P02 .002	P05 .005	P10 .010	P15 .015	P20 .020	P30 .030	P40 .040	P50 .050	M03 .003	M06 .006	M10 .010
18D26093	BEARING									X	X	X
18D26096	BEARING									X	X	X
18D26098	BEARING									X	X	X
18M26104	BEARING									X	X	X
LW-13792	SEAL								X			
LW-18921-S	BUSHING			X	X	X						
LW-18922-S	BUSHING			X	X	X						
STD-1065	DOWEL	X	X	X	X							
74241	RING			X								
14H21950	RING			X		X						
72057	SEAT		X	X		X	X					
72058	SEAT		X	X		X	X					
61681*	GUIDE		X	X		X	X	X				
16R22291*	GUIDE		X	X		X	X	X				
66610	BUSHING		X	X								

\* - Reference Figure 8 items no. 4 and 5 for valve guides.

**NOTE**

When ordering oversize and undersize parts, be sure to specify the required oversize and undersize dimension along with the proper part number. For example, to order bearing P/N 18D26098 bearing in .003 in. undersize, order P/N 18D26098-M03. Undersize code letter is "M" while oversize code letter is "P". These letters are then followed by the number designating the size in thousandths of an inch.

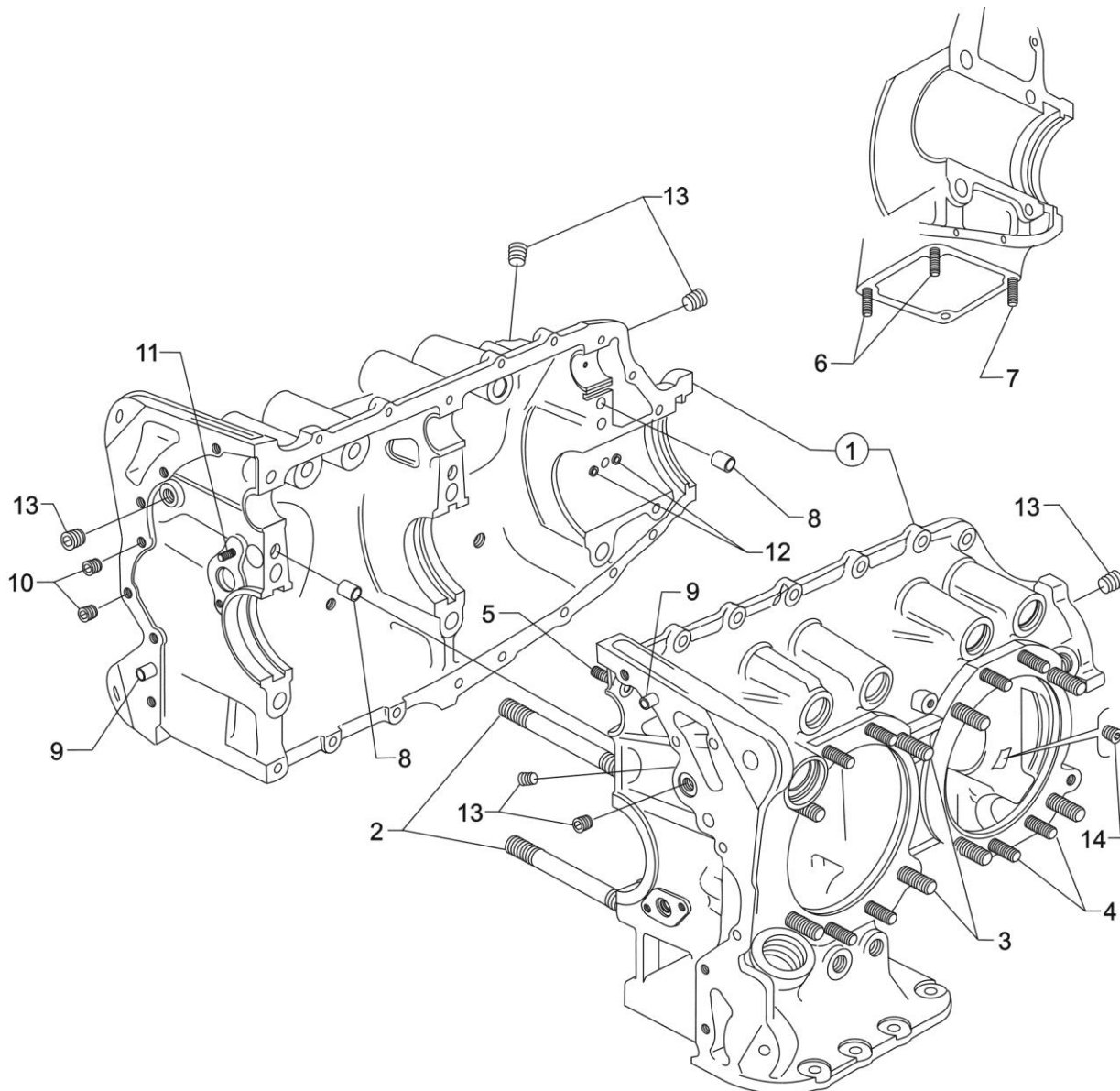


**Alternator Mounting and Attaching Parts**  
**Figure 1**



**ELECTRICAL POWER****FIGURE 1 – ALTERNATOR MOUNTING AND ATTACHING PARTS**

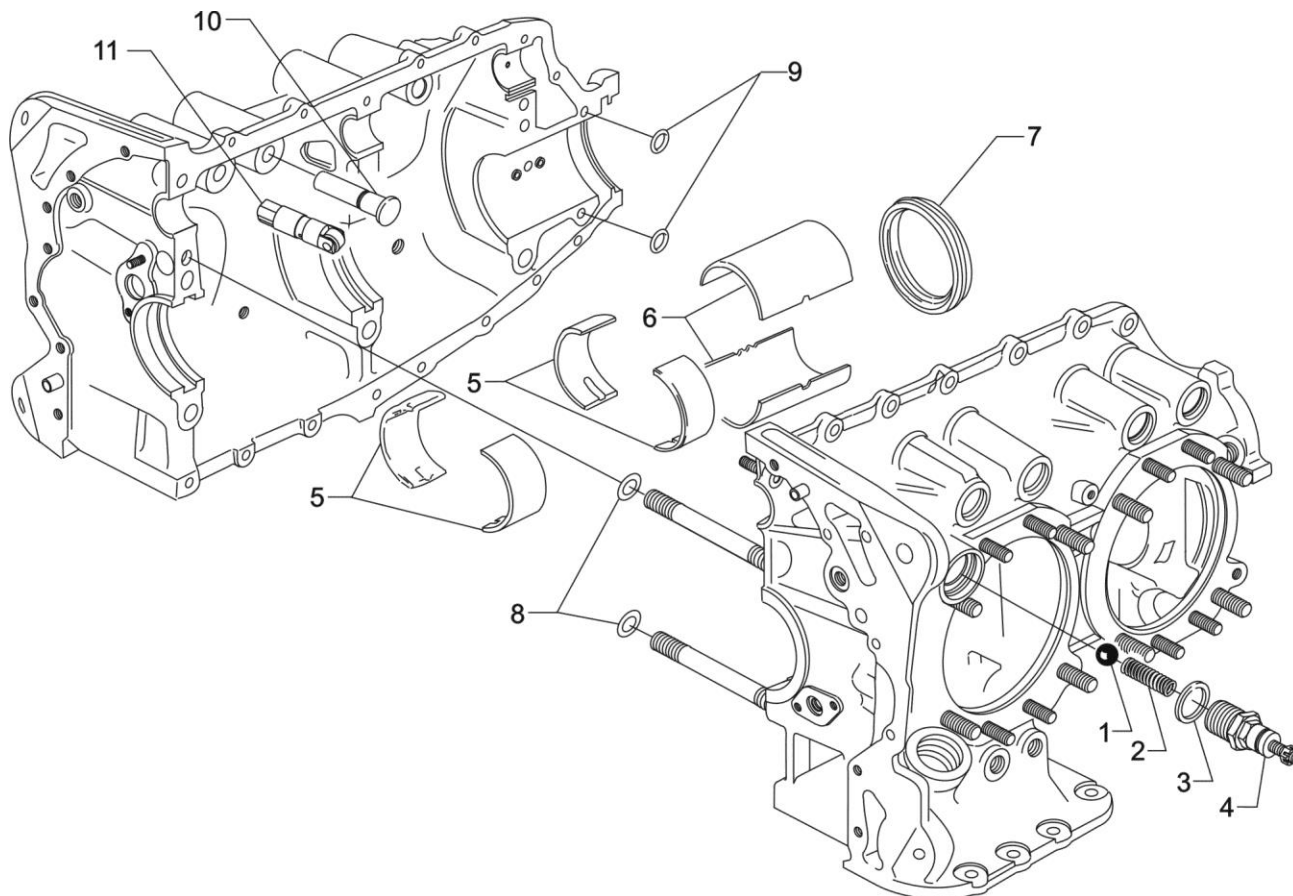
Figure Item	Code	Part Number	Description	Units per Assembly	
				E2B	E2C
1		07A19474	BRACKET, Alternator		1
2		73383	LOCKPLATE, 5/16 bolt x 1.00		1
3		LW-31-0.94	BOLT, 5/16-18 x 15/16 long, hex. head		2
4		75380	LINK, Alternator adjusting		1
		LW-11955	LINK, Alternator adjusting		1
5		STD-35	WASHER, 5/16 plain		1
6		LW-31H0.88	BOLT, 5/16-18 x 7/8 long, hex. head, drilled		1
		LW-31H0.75	BOLT, 5/16-18 x 3/4 long, hex. head, drilled		1
7		STD-1727	WASHER, Plain, 11/32 I.D. x 3/4 O.D.		1
8		LW-31H0.75	BOLT, 5/16-18 x 3/4 long, hex. head, drilled		1
9		07F23268	STRUT, Alternator support		1
10		LW-31H0.75	BOLT, 5/16-18 x 3/4 long, hex. head, drilled		1
11		STD-690	WASHER, 13/16 O.D. x 3/8 I.D. x 1/16 thick		1
12		AN6-14	BOLT, 3/8-24 x 1-15/16 long, hex. head		1
13		STD-690	WASHER, 13/16 O.D. x 3/8 I.D. x 1/16 thick		1
14		STD-872	NUT, 3/8-24 slotted		1
15		STD-713	COTTER PIN, 3/32 diameter x 3/4 long		1
16		AN6-16	BOLT, 3/8-24 x 1-27/32 long, hex. head		1
17		76534	SHIM, 1-1/8 O.D. x 13/32 I.D. x .005 thick		1
18		STD-690	WASHER, 13/16 O.D. x 3/8 I.D. x 1/16 thick		1
19		STD-872	NUT, 3/8-24 slotted		1
20		STD-713	COTTER PIN, 3/32 diameter x 3/4 long		1



**Crankcase Assembly**  
**Figure 2**

**POWER SECTION****FIGURE 2 - CRANKCASE ASSEMBLY**

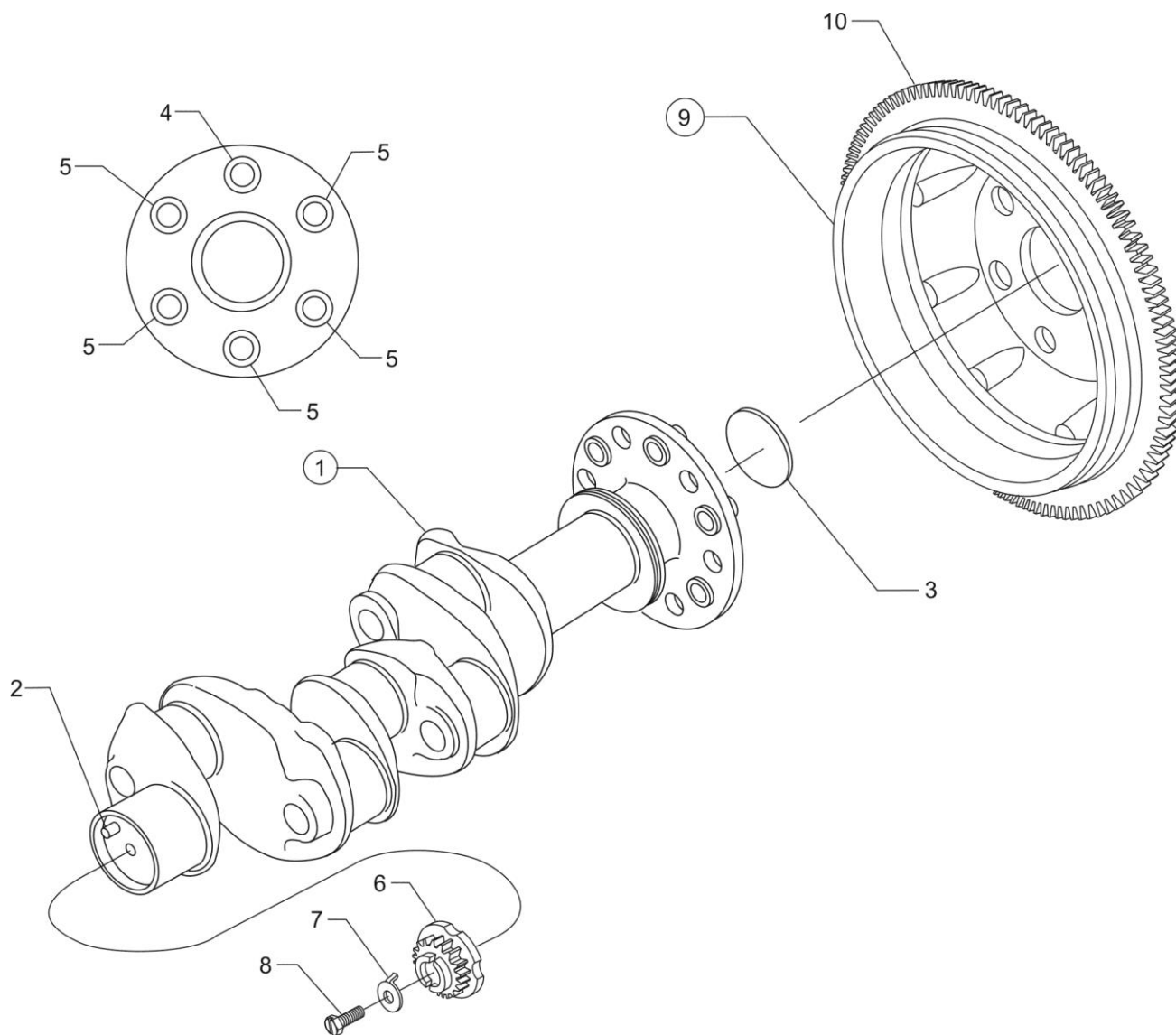
Figure Item	Code	Part Number	Description	Units per Assembly	
				E2B	E2C
1	*	11B20061-1SL-S	CRANKCASE ASSEMBLY KIT	1	1
	P	11B20061-1SL	CRANKCASE ASSEMBLY	1	1
	*	11B20161-1SL-S	CRANKCASE ASSEMBLY KIT <b>(Roller tappet engines)</b>	1	1
	P	11B20161-1SL	CRANKCASE ASSEMBLY <b>(Roller tappet engines)</b>	1	1
2		75154	STUD, 1/2-13 x 10-1/32 long	2	2
3		50-15	STUD, 1/2-13 x 1-7/8 long	8	8
4		38-13	STUD, 3/8-16 x 1-5/8 long	16	16
5		38D-17	STUD, 3/8-16 x 2-1/8 long, drilled	1	1
6		31C-12	STUD, 5/16-18 x 1-1/2 long	2	2
7		31C-13	STUD, 5/16-18 x 1-5/8 long	1	1
8		STD-557	DOWEL, 1/2 dia. x 11/16 long, hollow	2	2
9		STD-514	DOWEL, 5/16 dia. x 1/2 long	2	2
10		STD-1623	INSERT, 1/4-20 UNC x 3/8 long	2	2
11		LW-13793	STUD, 5/16-18 x 15/16 long, drilled	1	1
12		69796	DOWEL, Crankshaft bearing	2	2
13		1102	PLUG, 1/8-27 NPT, allen head	6	6
14		STD-1339	PLUG, 1/16-27 NPT, allen head	4	4
<p><b>P</b> Lycoming proprietary part. Listed for reference purposes only, cannot be purchased.</p> <p><b>*</b> Refer to Service Kits Section for applicable Crankcase Assembly and Governor Thru-Stud Kit Part Numbers.</p>					



**Crankcase Related Parts**  
**Figure 3**

**POWER SECTION****FIGURE 3 - CRANKCASE RELATED PARTS**

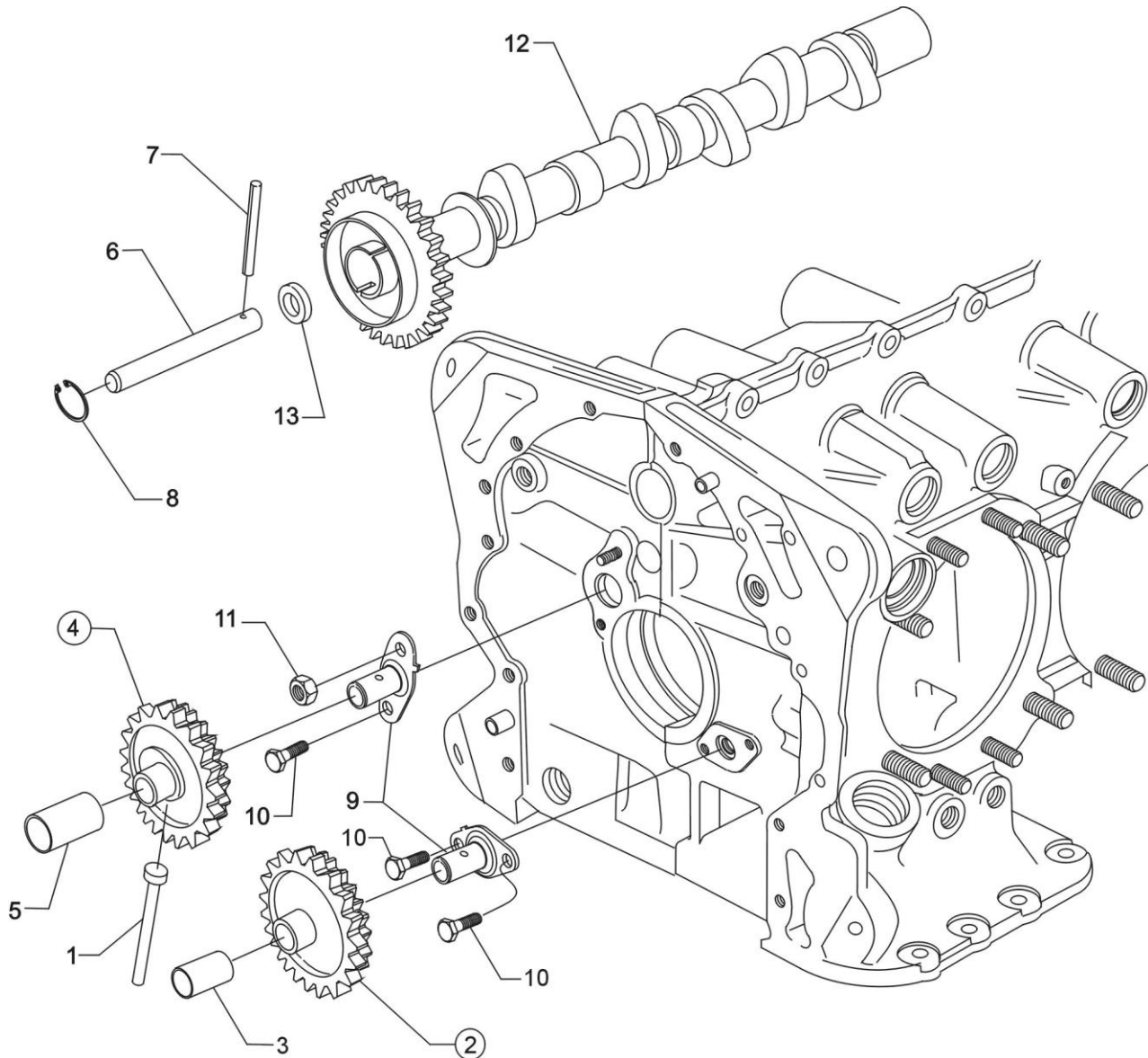
Figure Item	Code	Part Number	Description	Units per Assembly	
				E2B	E2C
1		1028-B	BALL, 11/16 diameter	1	1
2	*	61084	SPRING, Oil pressure relief valve	1	1
	*	68668	SPRING, Oil pressure relief valve	1	1
	*	LW-11713	SPRING, Oil pressure relief valve	1	1
	*	LW-18085	SPRING, Oil pressure relief valve	1	1
3		06E19769-1.25	GASKET, 1-1/4 I.D., annular	1	1
4		77808	VALVE ASSEMBLY, Oil pressure relief	1	1
5		18D26096	BEARING, Crankshaft	4	
		18D26098	BEARING, Crankshaft		4
6		18D26093	BEARING, Crankshaft	2	2
7	**	LW-13792	SEAL, Crankshaft, oil	1	1
8		72075	SEAL, Oil, 3/32 section x 15/32 I.D.	2	2
9		72091	RING, Oil seal, 23/64 I.D. x 7/64 diameter	2	2
10		15B26064	BODY, Hydraulic tappet	8	8
11		LRT23381	BODY ASSEMBLY, Hydraulic tappet ( <b>Roller tappet engines</b> )		8
<p>* Select spring to give a minimum of three threads exposed on adjusting screw to allow field adjustment. Reference latest revision of SSP-1776, Part I for spring identification.</p> <p>** See latest revision of Lycoming Service Instruction No. 1324 for installation.</p>					



**Crankshaft Assembly and Related Parts**  
**Figure 4**

**POWER SECTION****FIGURE 4 - CRANKSHAFT ASSEMBLY AND RELATED PARTS**

Figure Item	Code	Part Number	Description	Units per Assembly	
				E2B	E2C
1		13B47024	CRANKSHAFT ASSEMBLY	1	1
2		STD-1065	DOWEL, Stepped, 5/16-1/4 diameter	1	1
3		STD-1211	PLUG, 2.00 diameter expansion	1	1
4		LW-18921-S	BUSHING, Propeller flange, long	1	1
5		LW-18922-S	BUSHING, Propeller flange, short	5	5
6	<b>SB*</b>	13S19646	GEAR, Crankshaft	1	1
7		LW-18639	LOCKPLATE, Crankshaft gear	1	1
8		STD-2246	BOLT, 5/16-24 x 1.00 long	1	1
9		68867	SUPPORT ASSEMBLY, Starter ring gear	1	
		76628	SUPPORT ASSEMBLY, Starter ring gear		1
10	**	60882	GEAR, Starter ring, 10/12 pitch	1	
	♦	72566	GEAR, Starter ring, 12/14 pitch		1
<b>SB</b> Referencing Service Bulletin * Refer to latest revision of Service Bulletin No. 475 for proper installation. ** Use with 68867 Support Assembly. ♦ Use with 76628 Support Assembly.					

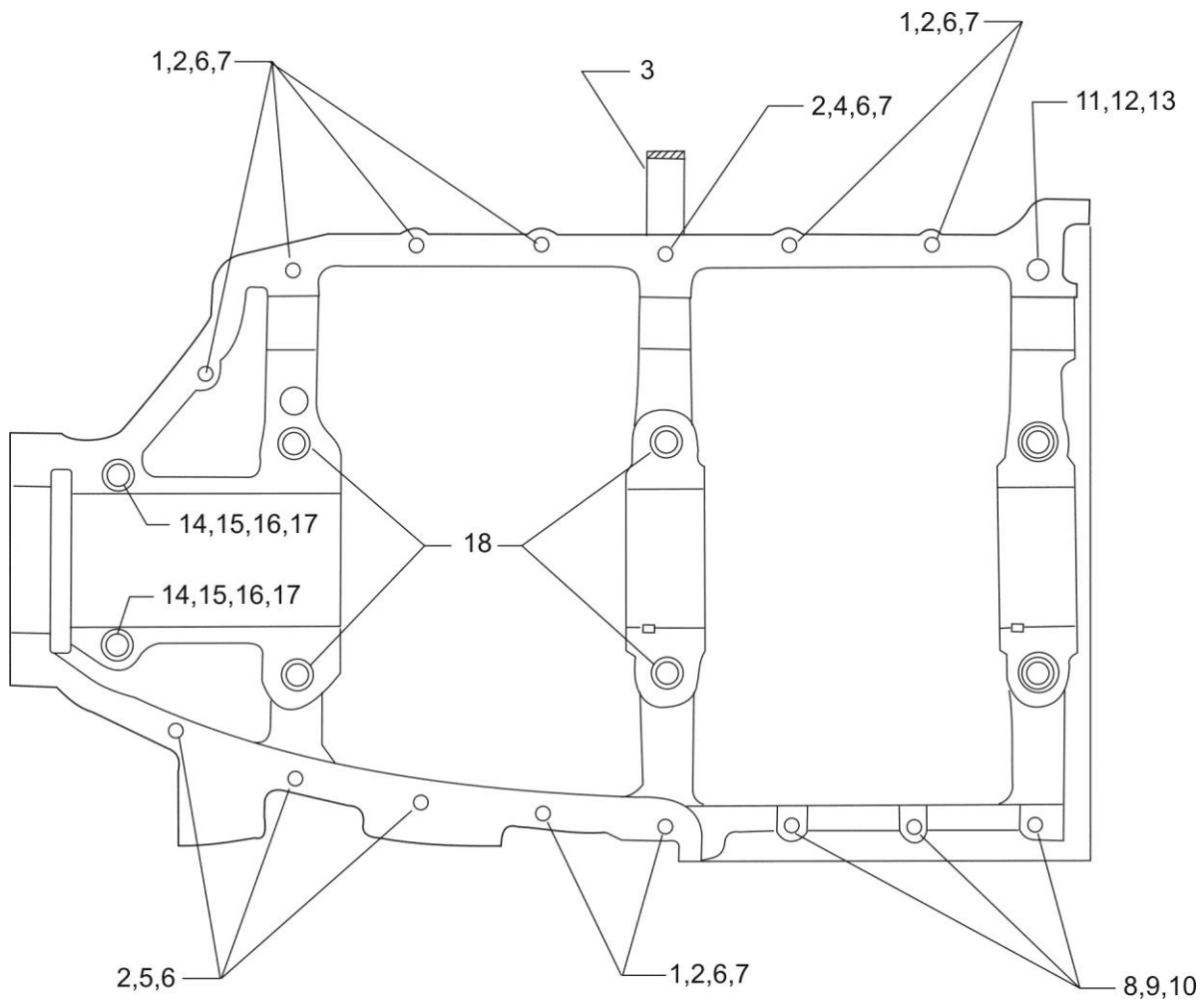


**Crankshaft Idler Gears, Tachometer Drive and Camshaft  
Figure 5**



**POWER SECTION****FIGURE 5 - CRANKSHAFT IDLER GEARS, TACHOMETER DRIVE AND CAMSHAFT**

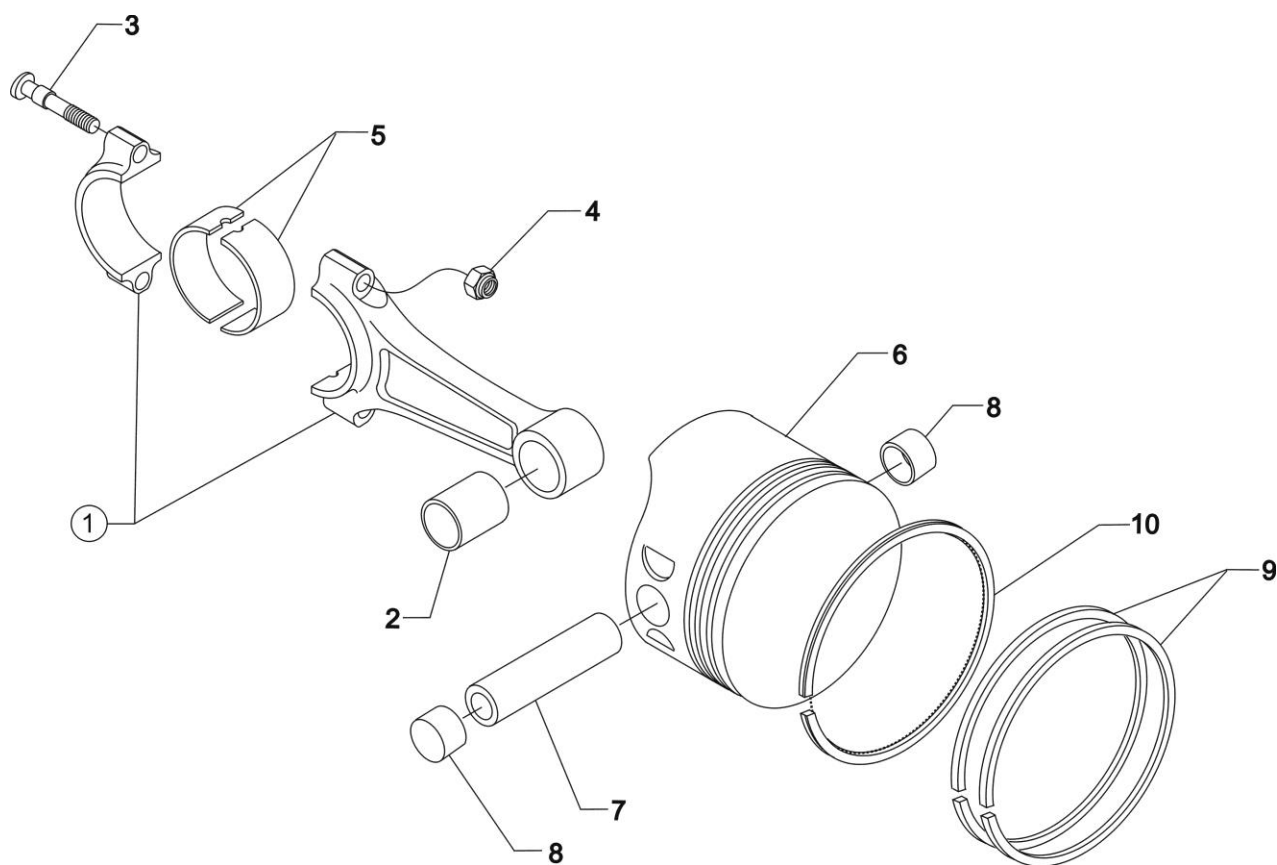
Figure Item	Code	Part Number	Description	Units per Assembly	
				E2B	E2C
1		61544	PLUNGER, Fuel pump, long	1	1
2		74996	GEAR ASSEMBLY, Crankshaft idler, plain	1	1
3		77309	BUSHING, Crankshaft idler gear	1	1
4		75072	GEAR ASSEMBLY, Crankshaft idler	1	1
5		77309	BUSHING, Crankshaft idler gear	1	1
6		76121	SHAFT ASSEMBLY, Tachometer	1	1
7		LW-18667	PIN, 11/16 diameter x 2-11/32 long	1	1
8		STD-2231	RING, Internal retaining	1	1
9		LW-13796	SHAFT, Crankshaft idler gear	2	2
10		LW-31H0.88	BOLT, 5/16-18 x 7/8 long, hex. head, drilled	3	3
11		STD-2168	NUT, 5/16-18 NC-3 slotted shear	1	1
12		LW-18840	CAMSHAFT ASSEMBLY	1	1
		15M23452	CAMSHAFT ASSEMBLY ( <b>Roller tappet engines</b> )		1
13		76118	SPACER, Tachometer shaft, centering	1	1



**Crankcase Attaching Parts**  
**Figure 6**

**POWER SECTION****FIGURE 6 - CRANKCASE ATTACHING PARTS**

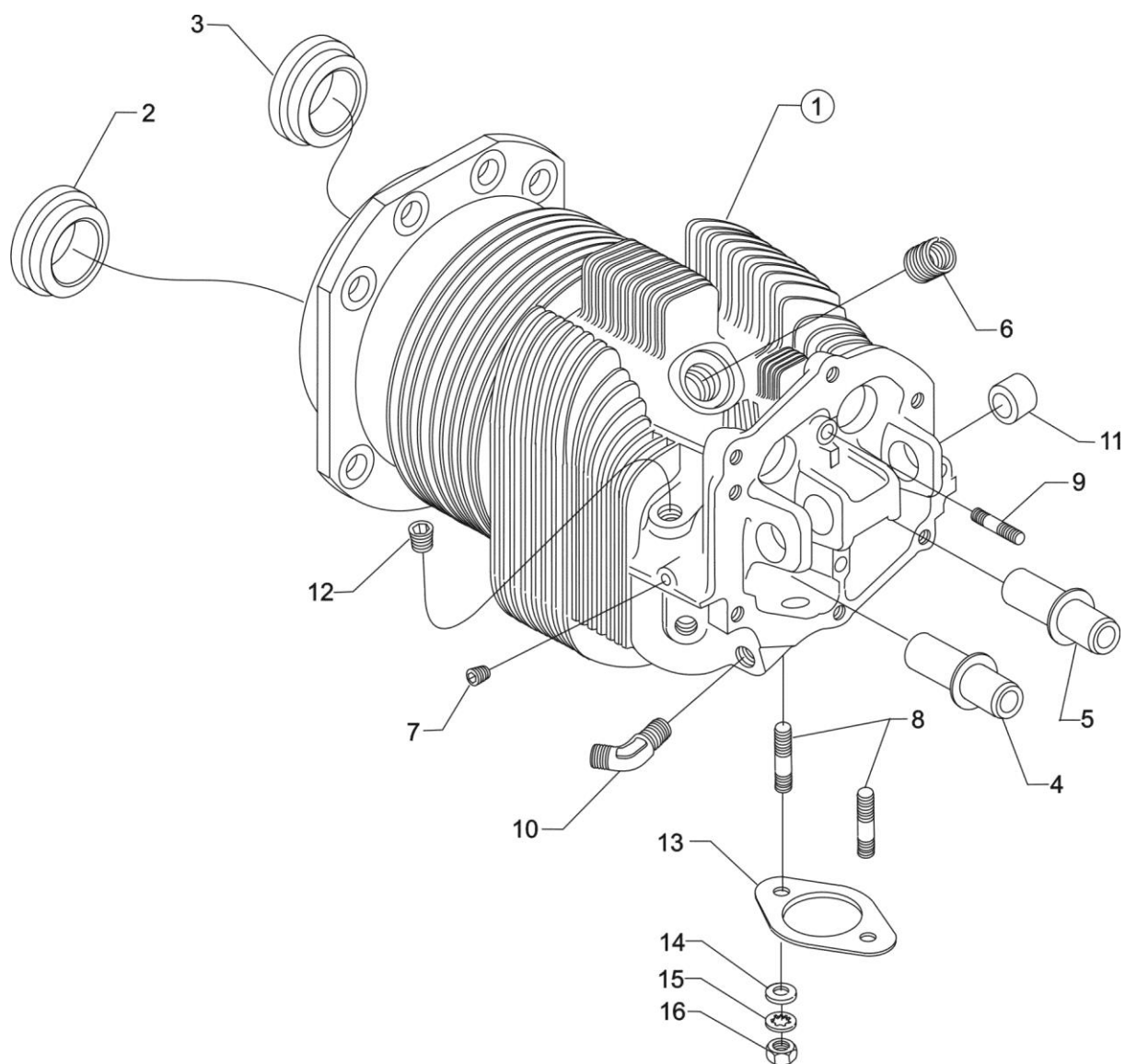
Figure Item	Code	Part Number	Description	Units per Assembly	
				E2B	E2C
1		LW-25-1.50	BOLT, 1/4-20 x 1-1/2 long, hex. head	8	8
2		STD-8	WASHER, 1/4 plain	19	19
3		60803	STRAP, Lifting	1	1
4		LW-25-1.75	BOLT, 1/4-20 x 1-3/4 long, hex. head	1	1
5		LW-25.1.13	BOLT, 1/4-20 x 1-1/8 long, hex. head	3	3
6		STD-160	WASHER, 1/4 lock, internal teeth	12	12
7		STD-1411	NUT, 1/4-20 plain	9	9
8		LW-25S1.50	BOLT, 1/4-20 x 1-1/2 long, drilled end	3	3
9		STD-8	WASHER, 1/4 plain	9	9
10		STD-2249	NUT, 1/4-20 slotted	3	3
11		STD-33	WASHER, 3/8 plain	3	3
12		AN960-616L	WASHER, 3/8 plain (thin)	1	1
13		STD-872	NUT, 3/8-24 slotted	1	1
14		AN6-34A	BOLT, 3/8-24 x 3-19/32 long, hex. head	2	2
15		STD-33	WASHER, 3/8 plain	2	2
16		STD-678	WASHER, 3/8 lock, internal teeth	2	2
17		STD-596	NUT, 3/8-24 plain	2	2
18		76220	STUD, 1/2-20 x 10-11/16 long	4	4



**Connecting Rods, Pistons and Ring Assemblies**  
**Figure 7**

**CYLINDER SECTION****FIGURE 7 - CONNECTING RODS, PISTONS AND RING ASSEMBLIES**

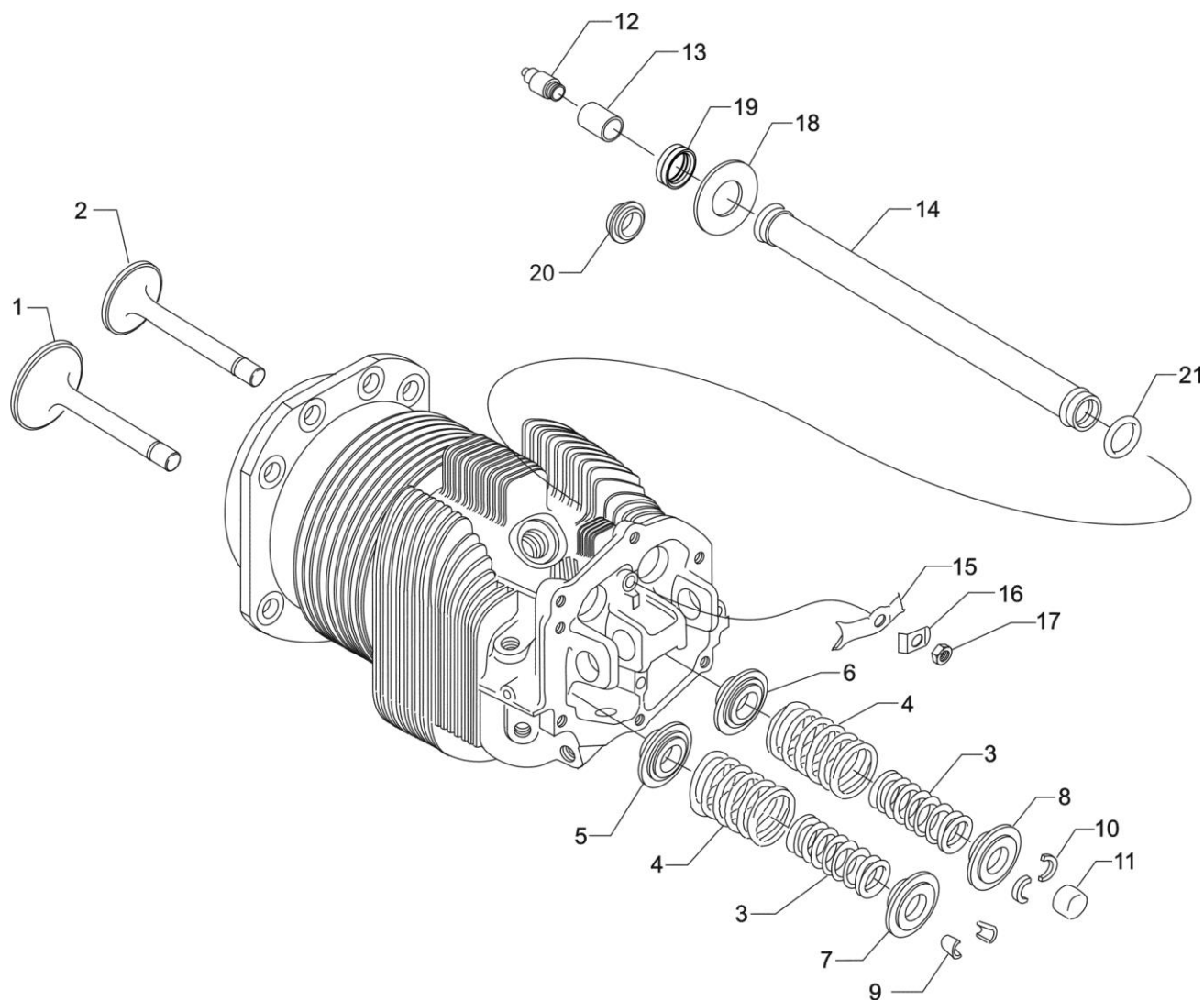
Figure Item	Code	Part Number	Description	Units per Assembly	
				E2B	E2C
1		78030-S	CONNECTING ROD ASSEMBLY	4	4
2		LW-13923	BUSHING, Connecting rod, upper	4	4
3		78027	BOLT, Connecting rod	8	8
4		LW-12186	NUT, Connecting rod bolt	8	8
5		18M26104	BEARING, Connecting rod	8	8
6		14D23915	PISTON, 7.00:1 compression ratio	4	4
7		LW-14078	PIN, Piston	4	4
8		72198	PLUG, Piston pin	8	8
9		74241	RING, Piston compression	8	8
10		14H21950	RING, Piston, oil	4	4



**Cylinder Assembly**  
**Figure 8**

**CYLINDER SECTION****FIGURE 8 - CYLINDER ASSEMBLY**

Figure Item	Code	Part Number	Description	Units per Assembly	
				E2B	E2C
1		LW-12416	CYLINDER ASSEMBLY, Nitrided	4	4
2		72057	SEAT, Intake valve	4	4
3		72058	SEAT, Exhaust valve	4	4
4	<b>P*</b>	76943	GUIDE, Valve, intake	4	4
5	<b>P*</b>	16R22126	GUIDE, Valve, exhaust	4	4
6	<b>P</b>	66796	INSERT, Spark plug, 18-1.5 MM	8	8
7		STD-1353	INSERT, No. 10-24 UNC x 3/8 long	4	4
8		31C-12	STUD, 5/16-18 x 1-1/2 long	8	8
9		25C-8	STUD, 1/4-20 x 1.00 long	4	4
10		MS20823-6D	ELBOW, 45°, 3/8 flared tube	4	4
11		66610	BUSHING, Rocker shaft	16	16
12	<b>**</b>	1102	PLUG, 1/8-27 NPT, allen head	4	4
13		77611	GASKET, Exhaust flange	4	4
14		STD-35	WASHER, 5/16 plain	8	8
15		STD-475	WASHER, 5/16 lock, internal teeth	8	8
16		STD-1410	NUT, 5/16-18 plain	8	8
<p><b>P</b> Lycoming proprietary part. Listed for reference purposes only, cannot be purchased.</p> <p><b>*</b> See latest revision of Service Instruction No. 1256 for service valve guides.</p> <p><b>**</b> Used on installations without injector or priming system.</p>					

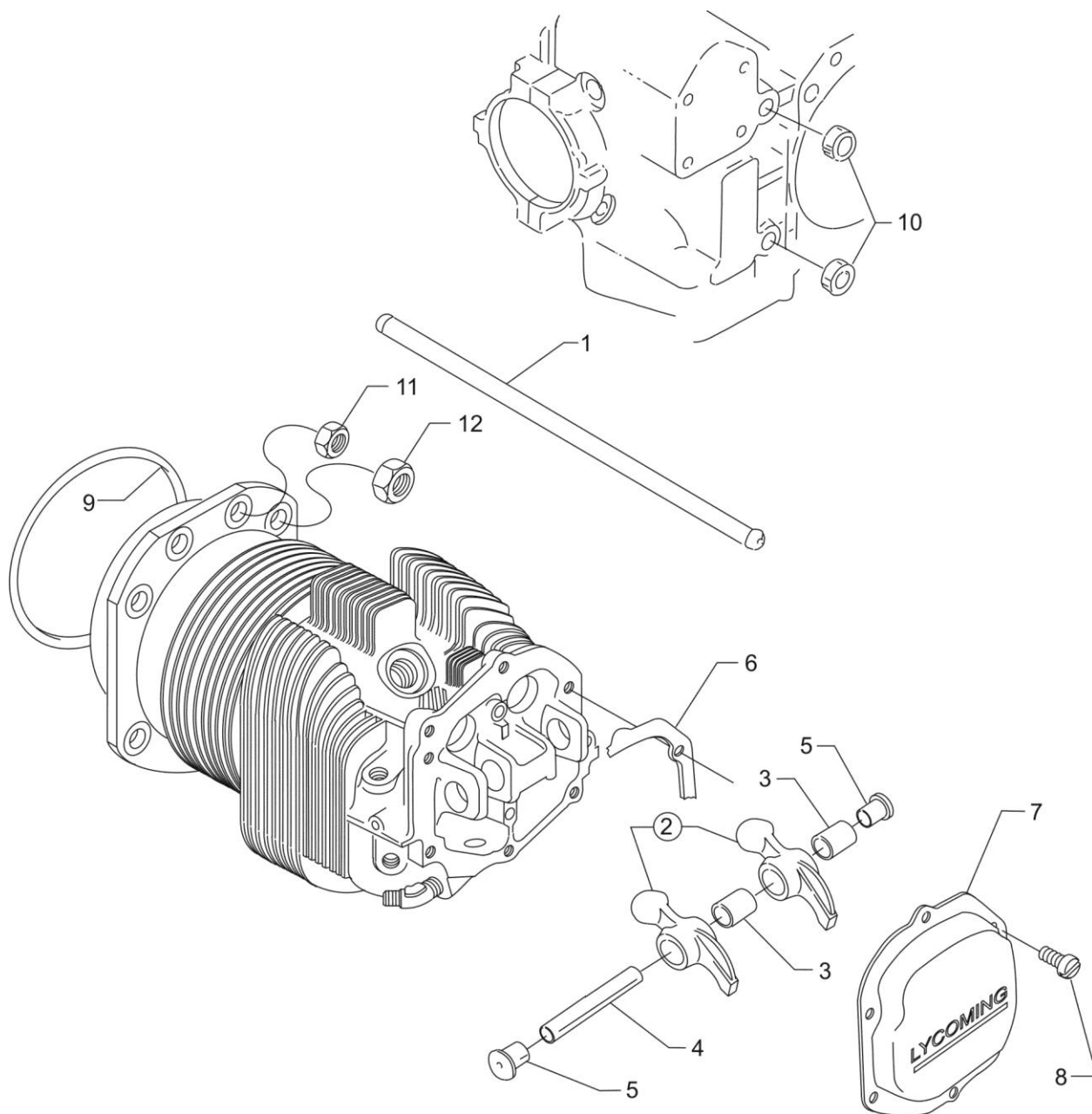


**Valve Assembly and Related Parts**  
**Figure 9**



**CYLINDER SECTION****FIGURE 9 – VALVE ASSEMBLY AND RELATED PARTS**

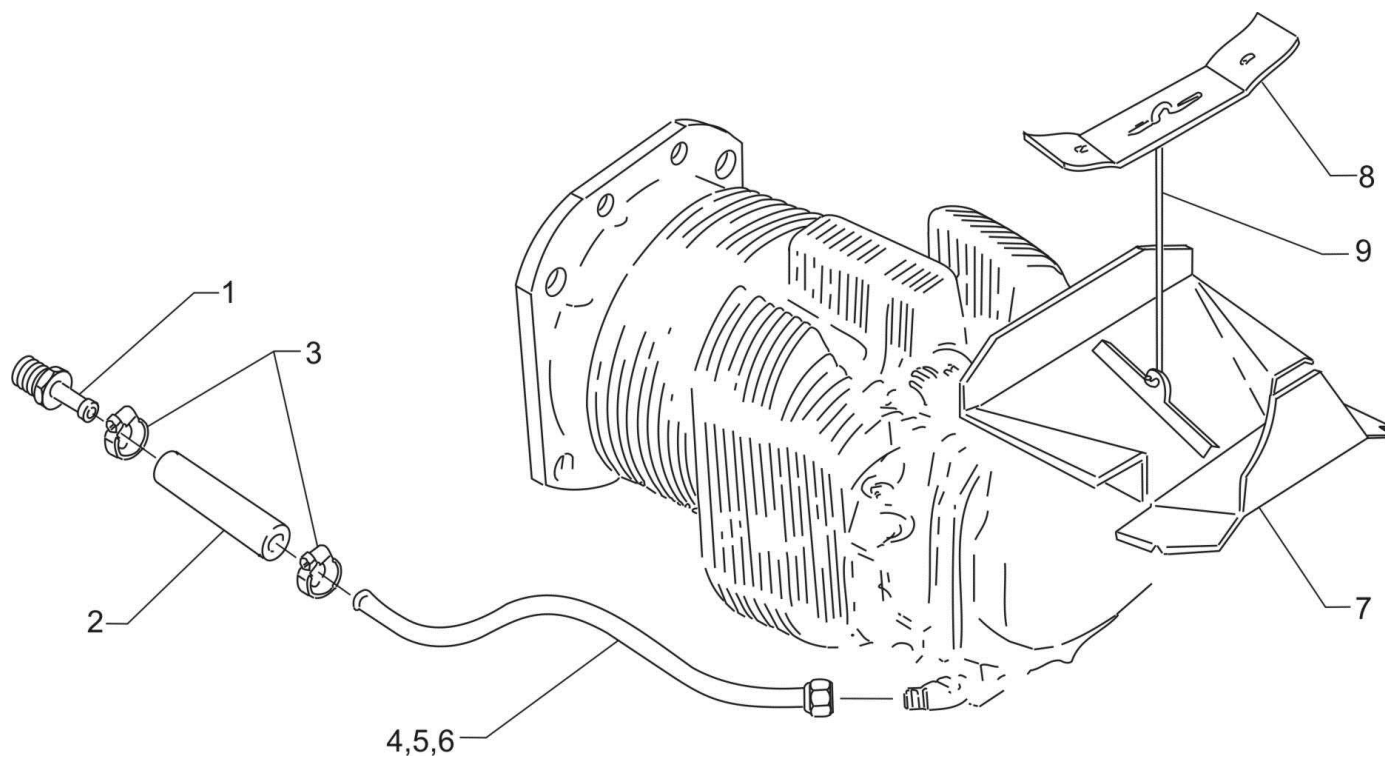
Figure Item	Code	Part Number	Description	Units per Assembly	
				E2B	E2C
1		17A23938	VALVE, Intake	4	4
2		17B23936	VALVE, Exhaust (rotator type)	4	4
3		LW-11795	SPRING, Valve, inner	8	8
4		LW-11800	SPRING, Valve, outer	8	8
5		65441	SEAT, Valve spring, lower intake	4	4
6		LW-13323	SEAT, Valve, spring, lower exhaust	4	4
7		LW-10077	SEAT, Valve spring, upper intake	4	4
8		LW-16475	SEAT, Valve spring, upper exhaust (rotator type)	4	4
9		60009	KEY, Valve, intake	8	8
10		17C21191	KEY, Valve, exhaust (rotator type)	8	8
11		17C19386	CAP, Valve stem, exhaust (rotator type)	4	4
12		15B26066	PLUNGER ASSEMBLY, Hydraulic lifter	8	8
13		15B21319	SOCKET, Hydraulic tappet	8	8
14		68987	SHROUD TUBE ASSEMBLY, Push rod	8	8
		15G23494	SHROUD TUBE ASSEMBLY, Push rod (Roller tappet engines)		8
15		LW-14995	SPRING, Shroud tube	4	4
16		LW-12272	LOCKPLATE, Shroud tube	4	4
17		STD-1411	NUT, 1/4-20 plain	4	4
18		01L23459	WASHER, 25/32 I.D. x 3/8 O.D. x 1/32 thick (Roller tappet engines)		8
19	*	LW-18661	SEAL, Shroud tube	8	8
20		06A23493	SEAL, Shroud tube (Roller tappet engines)		8
21	**	70310	SEAL, Shroud tube	8	8
<p>* This seal is used on flat tappet engines only.</p> <p>** This seal is used on both flat tappet engines and roller tappet engines.</p>					



**Cylinder Related Parts**  
**Figure 10**

**CYLINDER SECTION****FIGURE 10 – CYLINDER RELATED PARTS**

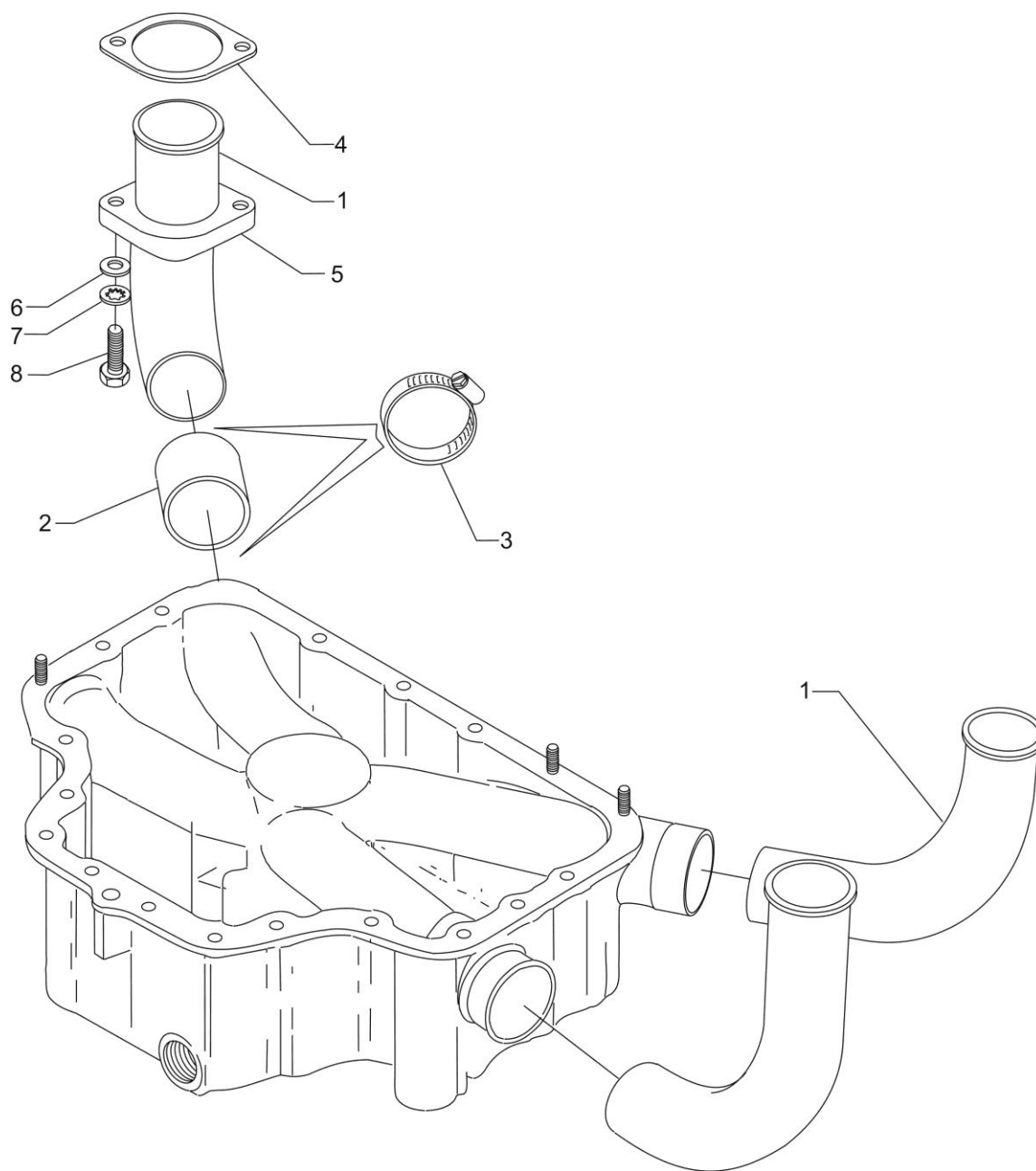
Figure Item	Code	Part Number	Description	Units per Assembly	
				E2B	E2C
1	AR*♦	15F19957-09	ROD ASSEMBLY, Push (A total of 8 required)		AR
	AR*♦	15F19957-10	ROD ASSEMBLY, Push (A total of 8 required)		AR
	AR†♦	15F19957-12	ROD ASSEMBLY, Push (A total of 8 required)	AR	AR
	AR‡♦	15F19957-13	ROD ASSEMBLY, Push (A total of 8 required)	AR	AR
2	**	17F19357	ROCKER ASSEMBLY, Valve	8	8
3		74637	BUSHING, Valve rocker	8	8
4		LW-13790	SHAFT, Valve rocker	4	4
5		LW-12892	THRUST BUTTON, Rocker shaft	8	8
6		75906	GASKET, Rocker box cover	4	4
7		61247	COVER, Rocker box	4	4
8		STD-1925	SCREW, 1/4-20 x 5/8 long, pan. head	24	24
9		71481	RING, Oil seal, 3/32 diameter x 4-27/32 I.D.	4	4
10		74887	SPACER, 33/64 I.D. x 7/8 O.D. x 3/8 thick	2	2
11		383-B	NUT, 3/8-24 plain	16	16
12		STD-2090	NUT, 1/2-20 plain	18	18
<p><b>AR</b> as required</p> <p>* These push rods are not to be used on flat tappet engines.</p> <p>† This push rod can be used on both flat tappet and roller tappet engines.</p> <p>‡ This push rod is not to be used on roller tappet engines.</p> <p>♦ See latest revision of Service Instruction No. 1060 for complete push rod application.</p> <p>** Due to the size of the area where the part number is stamped, the last five digits may be all that is shown (19357).</p> <p><b>NOTE:</b> Various push rod lengths are used to set valve clearances.</p>					



**Cylinder Head Drain Tubes and Intercylinder Cooling Baffles**  
**Figure 11**

**CYLINDER SECTION****FIGURE 11 –CYLINDER HEAD DRAIN TUBES AND INTERCYLINDER COOLING BAFFLES**

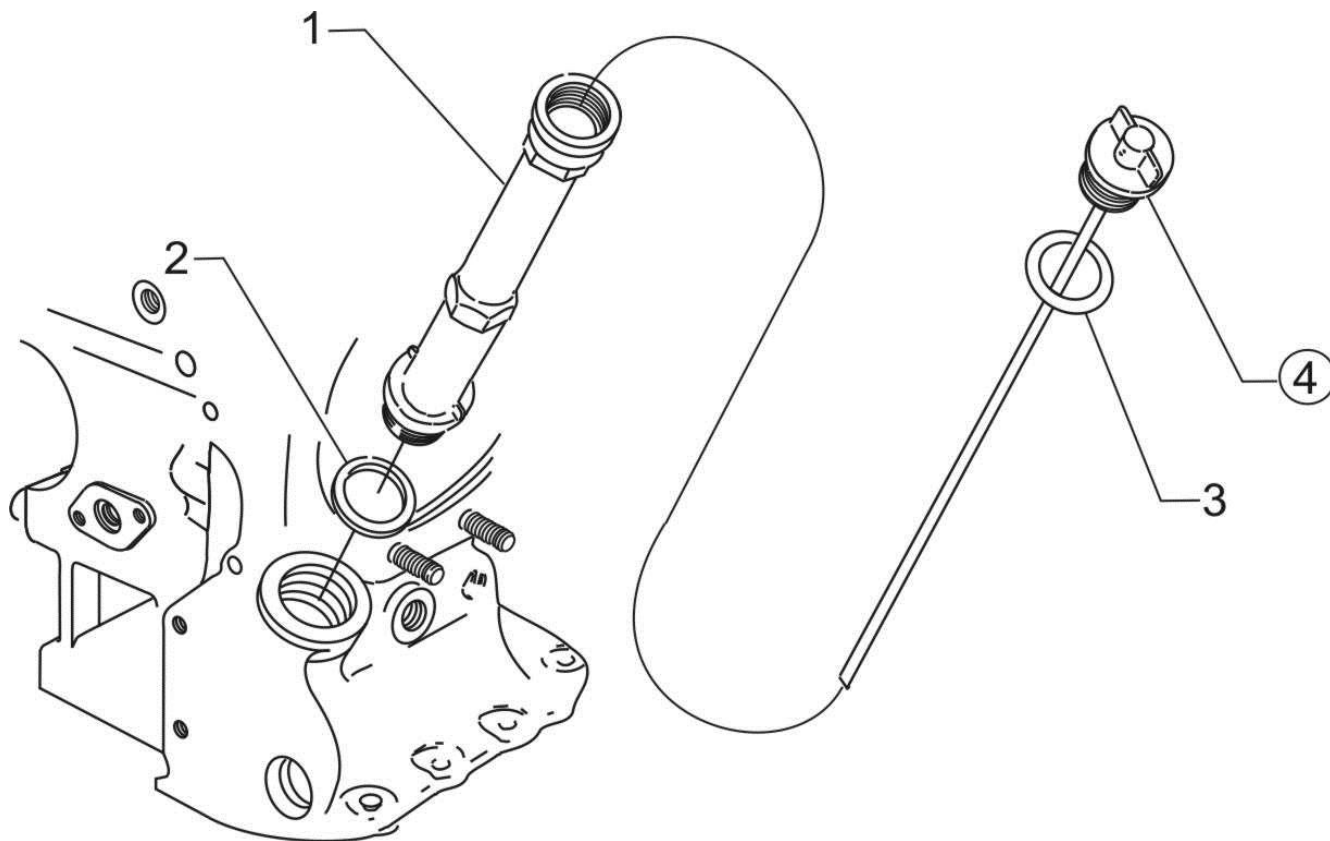
Figure Item	Code	Part Number	Description	Units per Assembly	
				E2B	E2C
1		STD-684	NIPPLE, Straight, 3/8 I.D. hose	4	4
2		STD-2180	HOSE, 3/8 I.D. x 1-7/8 long	4	4
3		LW-15592-5-05	CLAMP, Hose	8	8
4		68759	TUBE ASSEMBLY, Oil drain, cylinder no. 1	1	1
5		68760	TUBE ASSEMBLY, Oil drain, cylinder no. 2	1	1
6		68761	TUBE ASSEMBLY, Oil drain, cylinders no. 3 & 4	2	2
7		72569	BAFFLE ASSEMBLY, Intercylinder	2	2
8		71611	RETAINER, Intercylinder baffle	2	2
9		71610	HOOK, Intercylinder baffle retainer	2	2



**Intake Pipes and Attaching Parts**  
**Figure 12**

**CYLINDER SECTION****FIGURE 12 – INTAKE PIPES AND ATTACHING PARTS**

Figure Item	Code	Part Number	Description	Units per Assembly	
				E2B	E2C
1		74084	PIPE, Intake	4	4
2		69603	HOSE, 1-3/4 I.D. x 2-3/16 O.D. x 1-3/4 long	4	4
3		LW-15592-8-28	CLAMP, Hose	8	8
4		71973	GASKET, 2 bolt flange, 1-13/16 I.D.	4	4
5		73346	FLANGE, Intake pipe, upper	4	4
6		STD-8	WASHER, 1/4 plain	8	8
7		STD-160	WASHER, 1/4 lock, internal teeth	8	8
8		LW-25-1.25	BOLT, 1/4-20 x 1-1/4 long, hex. head	8	8

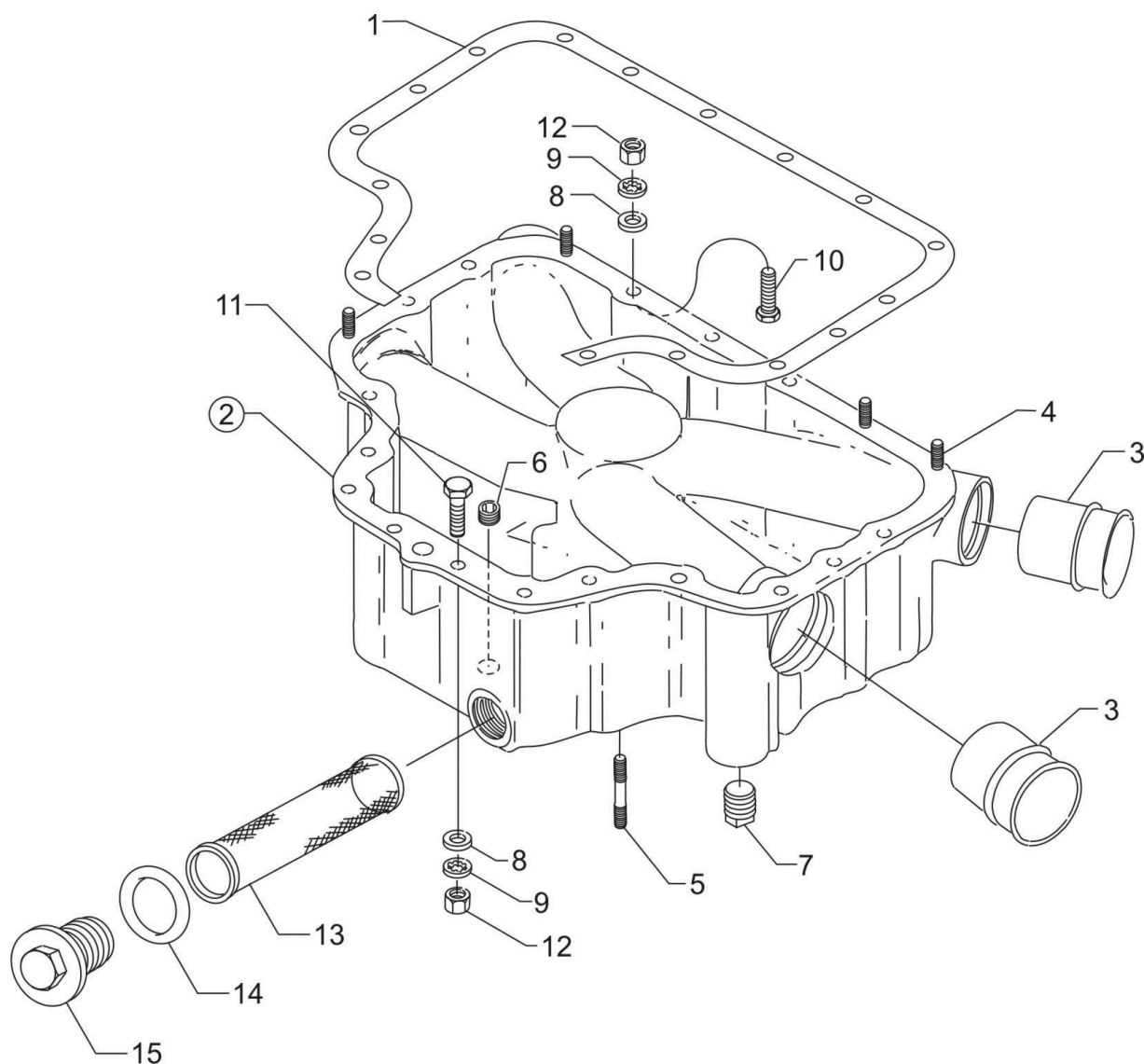


**Oil Level Gage  
Figure 13**



**LUBRICATION SYSTEM****FIGURE 13 – OIL LEVEL GAGE**

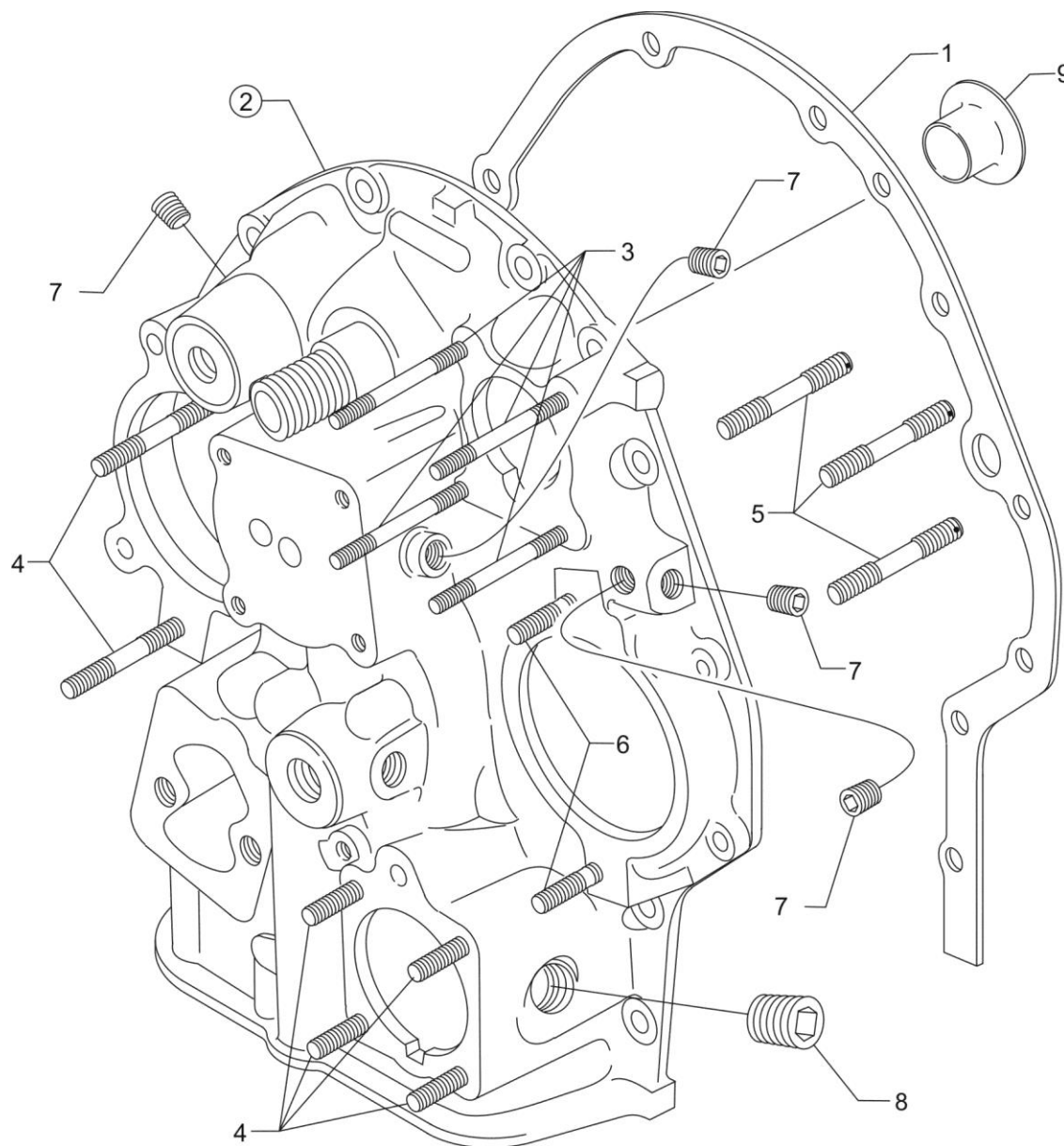
Figure Item	Code	Part Number	Description	Units per Assembly	
				E2B	E2C
1		75736	TUBE, Oil level gage, 11-9/16 long	1	
		75737	TUBE, Oil level gage, 10-9/16 long		1
2		72059	GASKET, Oil level gage	1	1
3	*	74068	RING, Oil level gage plug	1	
	**	74065	RING, Oil level gage, seal		1
4		LW-16783-18	GAGE ASSEMBLY, Oil level	1	
		LW-14780	GAGE ASSEMBLY, Oil level		1
* Use with LW-16783-18 Oil Level Gage Assembly. ** Use with LW-14780 Oil Level Gage Assembly.					



**Oil Sump Assembly and Oil Suction Screen**  
**Figure 14**

**LUBRICATION SYSTEM****FIGURE 14 – OIL SUMP ASSEMBLY AND OIL SUCTION SCREEN**

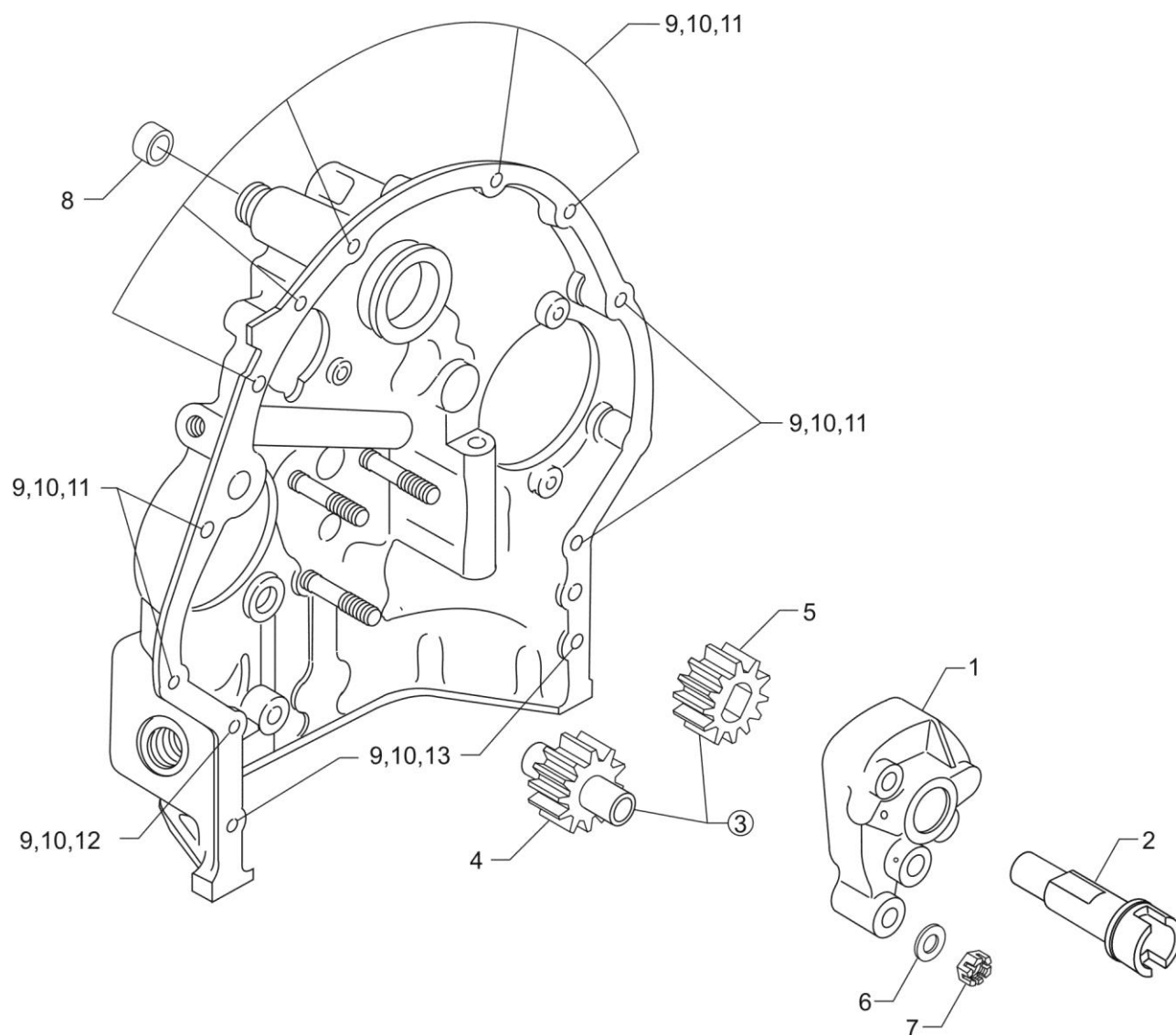
Figure Item	Code	Part Number	Description	Units per Assembly	
				E2B	E2C
1		LW-13353	GASKET, Oil sump	1	1
2		LW-10828	SUMP ASSEMBLY, Oil	1	1
3		78914	CONNECTION, Intake pipe	4	4
4		61400	STUD, 1/4-20 x 1-3/16 long	4	4
5		31C-15	STUD, 5/16-18 x 1-7/8 long	4	4
6		STD-91	PLUG, 1/2-14 NPT, allen head	1	1
7		STD-551	PLUG, 1/2-14 NPT, square head, drilled	2	2
8		STD-8	WASHER, 1/4 plain	28	28
9		STD-160	WASHER, 1/4 lock, internal teeth	20	20
10		LW-25-0.94	BOLT, 1/4-20 x 15/16 long, hex. head	14	14
11		LW-25-1.13	BOLT, 1/4-20 x 1-1/8 long, hex. head	2	2
12		STD-1411	NUT, 1/4-20 plain	12	12
13		70484	SCREEN, Oil suction	1	1
14		06E19769-1.00	GASKET, Annular, 1.00 I.D.	1	1
15		LW-12545	PLUG, 5/8 hex. head x 1.00-20 thread	1	1



**Accessory Housing Assembly**  
**Figure 15**

**ACCESSORY DRIVES****FIGURE 15 – ACCESSORY HOUSING ASSEMBLY**

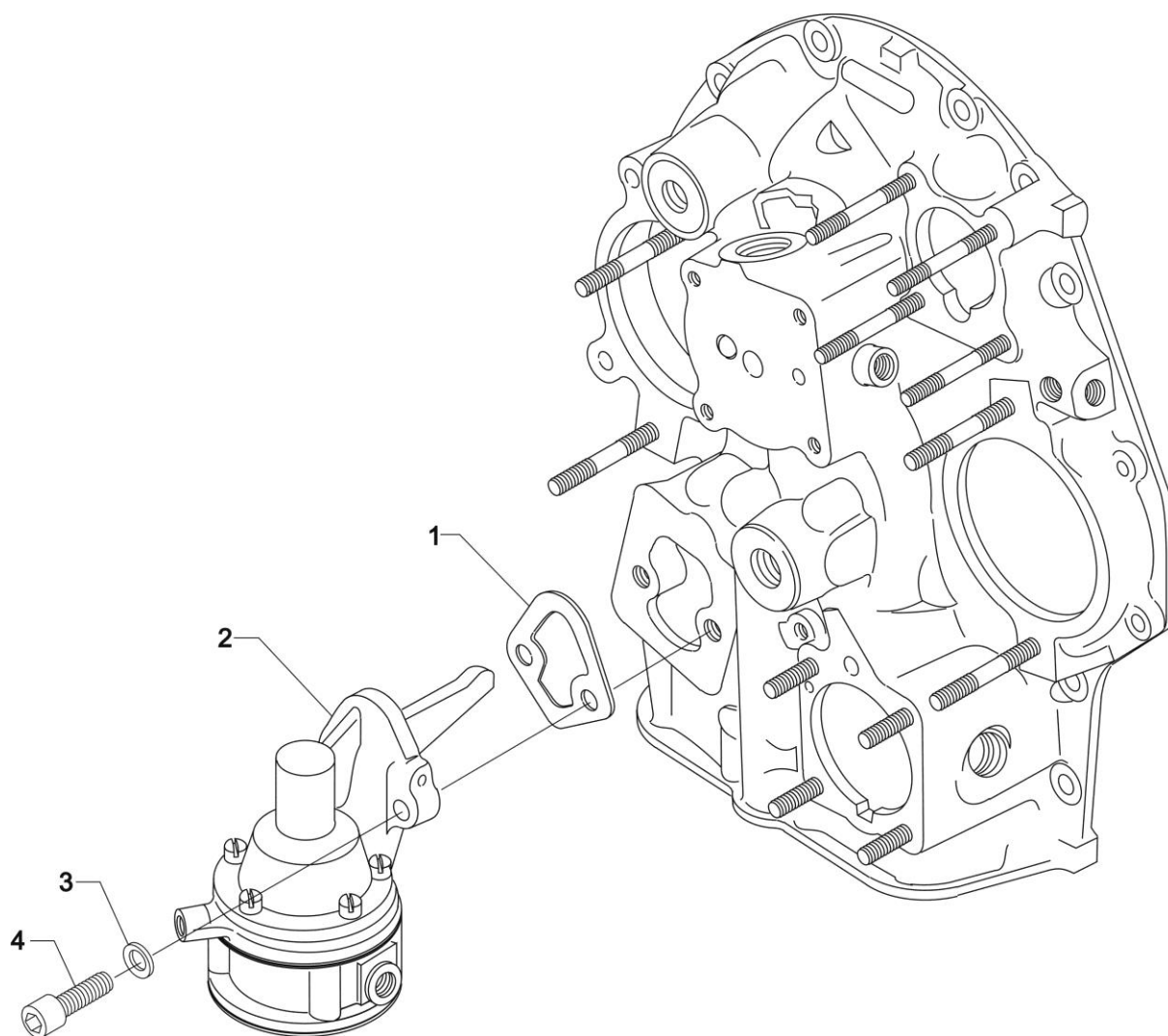
Figure Item	Code	Part Number	Description	Units per Assembly	
				E2B	E2C
1		73818	GASKET, Accessory housing	1	1
2		21A21533-04	HOUSING ASSEMBLY, Accessory		1
		21A21533-06	HOUSING ASSEMBLY, Accessory	1	
3		25C-22	STUD, 1/4-20 x 2-3/4 long	4	4
4		31C-12	STUD, 5/16-18 x 1-1/2 long	6	6
5		31CD-17	STUD, 5/16-18 x 2-1/8 long, drilled	3	3
6		31C-19	STUD, 5/16-18 x 2-3/8 long		2
		31C-13	STUD, 5/16-18 x 2-1/8 long	2	
7		1102	PLUG, 1/8-27 NPT, allen head	4	4
8		STD-784	PLUG, 3/8-18 NPT, allen head	1	1
9		76119	SHIELD, Accessory breather oil	1	1



**Oil Pump Assembly and Accessory Housing Attaching Parts**  
**Figure 16**

**ACCESSORY DRIVES****FIGURE 16 – OIL PUMP ASSEMBLY AND ACCESSORY HOUSING ATTACHING PARTS**

Figure Item	Code	Part Number	Description	Units per Assembly	
				E2B	E2C
1		78531	BODY ASSEMBLY, Oil pump	1	1
2		61174	SHAFT, Oil pump drive	1	1
3		05K19423-S	IMPELLER KIT	1	1
4	*	LW-18110	IMPELLER ASSEMBLY, Oil pump driven	1	1
5	*	LW-18109	IMPELLER, Oil pump driven	1	1
6		STD-35	WASHER, 5/16 plain	3	3
7		STD-1420	NUT, 5/16-18 slotted	3	3
8		LW-14260	SEAL, Oil, tachometer drive	1	1
9		STD-8	WASHER, 1/4 plain	12	12
10		STD-160	WASHER, 1/4 lock, internal teeth	12	12
11		LW-25-0.94	BOLT, 1/4-20 x 15/16 long, hex. head	9	9
12		LW-25-1.13	BOLT, 1/4-20 x 1-1/8 long, hex. head	1	1
13		LW-25-1.44	BOLT, 1/4-20 x 1-7/16 long, hex. head	2	2
* Sold in complete sets only (Kit P/N 05K19423-S).					

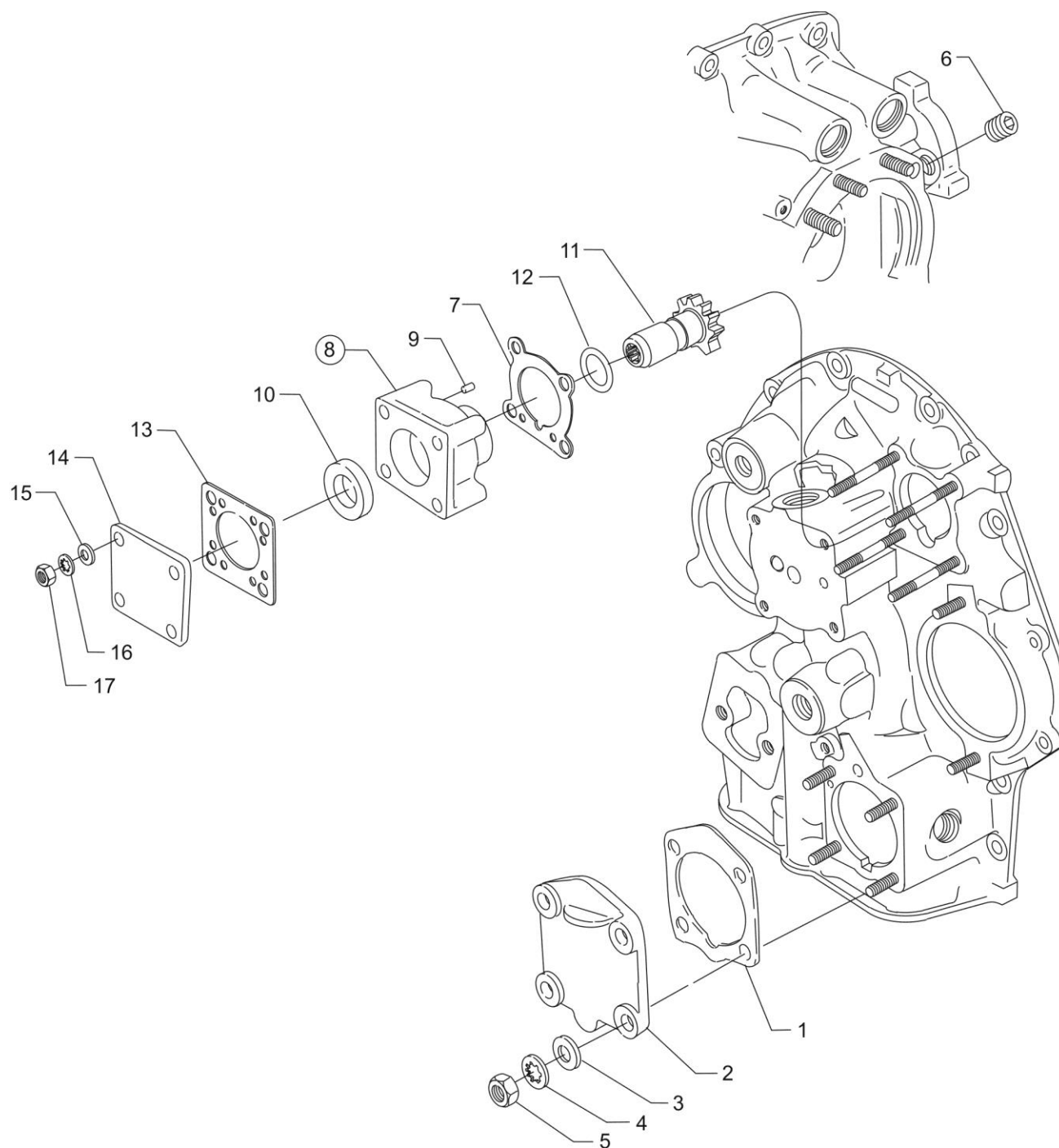


**Fuel Pump Assembly and Attaching Parts**  
**Figure 17**



**ACCESSORY DRIVES****FIGURE 17 – FUEL PUMP ASSEMBLY AND ATTACHING PARTS**

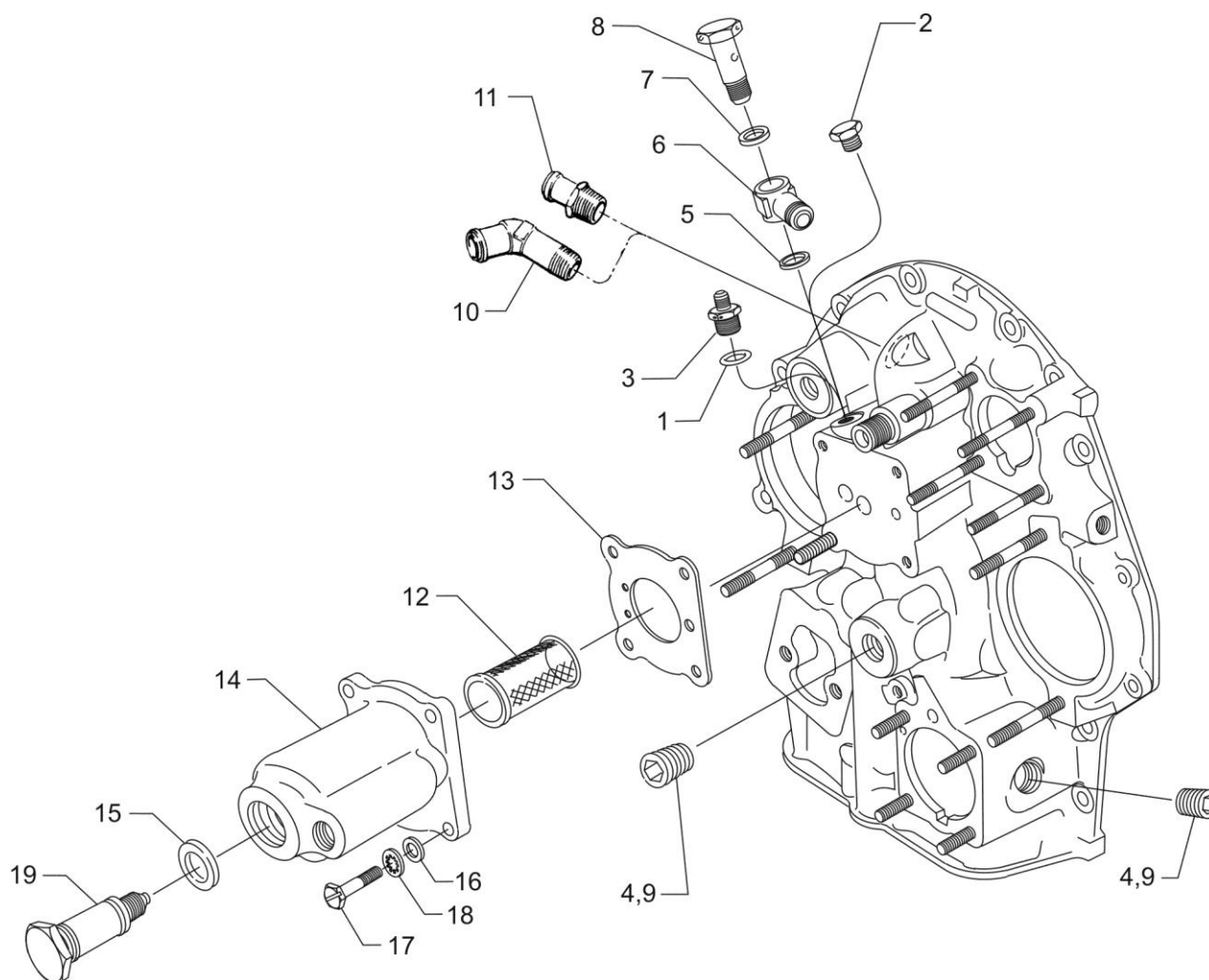
Figure Item	Code	Part Number	Description	Units per Assembly	
				E2B	E2C
1		60096	GASKET, Fuel pump	1	1
2		LW-15472	FUEL PUMP, Dual diaphragm, low pressure	1	1
3		STD-33	WASHER, 3/8 plain	2	2
4		STD-1882	SCREW, 3/8-16 x 1-9/32 long, socket head, drilled	2	2



**Propeller Governor Drive Cover, Vacuum Pump Drive and Cover  
Figure 18**

**ACCESSORY DRIVES****FIGURE 18 – PROPELLER GOVERNOR DRIVE COVER, VACUUM PUMP DRIVE AND COVER**

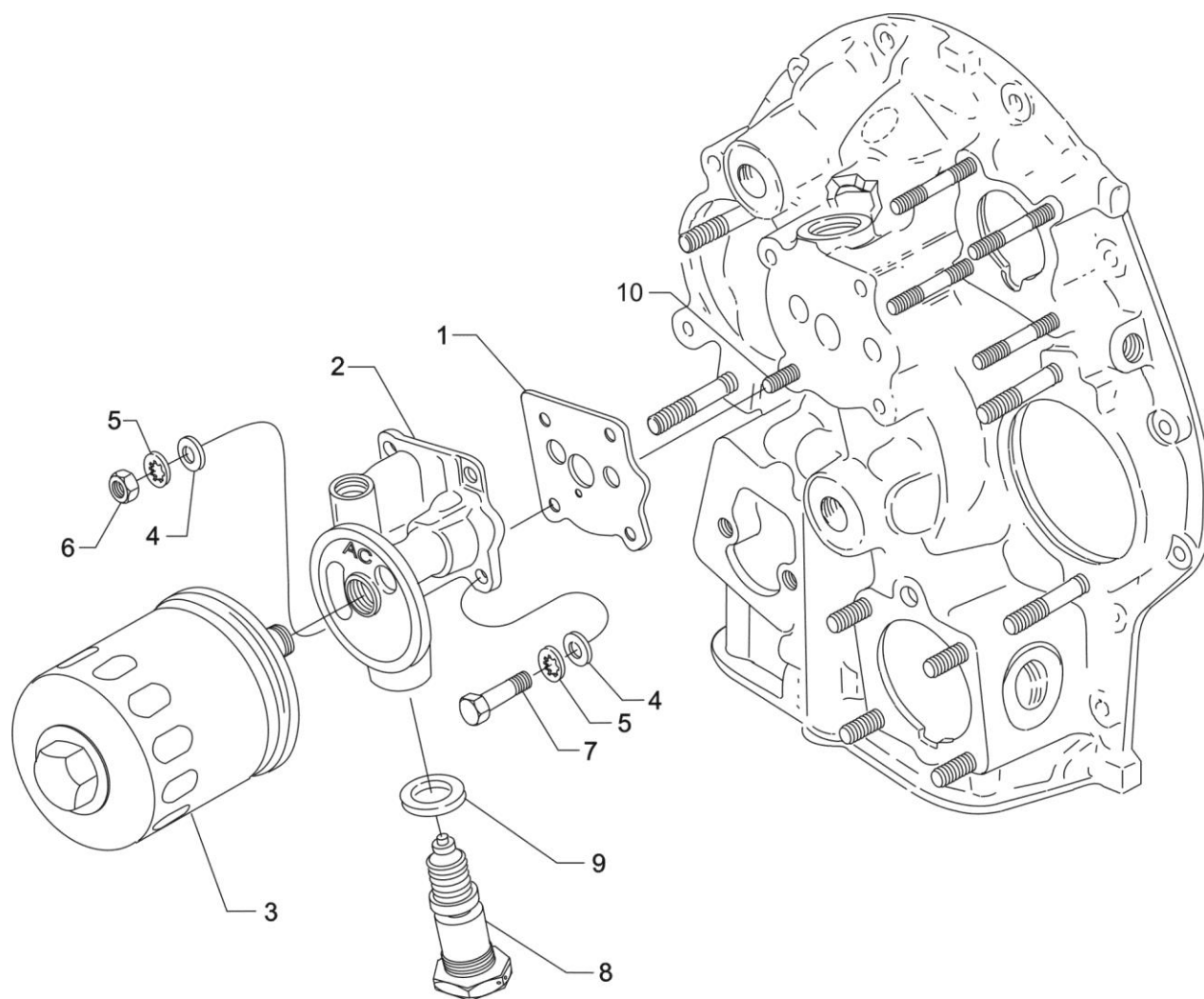
Figure Item	Code	Part Number	Description	Units per Assembly	
				E2B	E2C
1		69551	GASKET, Accessory drive adapter	1	1
2		69106	COVER, Governor drive adapter pad	1	1
3		STD-35	WASHER, 5/16 plain	4	4
4		STD-475	WASHER, 5/16 lock, internal teeth	4	4
5		STD-1410	NUT, 5/16-18 plain	4	4
6	*	STD-783	PLUG, 1/4-18 NPT, allen head	1	1
7		61183	GASKET, Accessory adapter	1	1
8		61098	ADAPTER ASSEMBLY, Vacuum pump	1	1
9		STD-1774	PIN, 1/8 diameter x 1/4 long	1	1
10		06A19956	OIL SEAL, 7/8 I.D. x 1-1/2 O.D. x 5/16 wide	1	1
11		72970	GEAR ASSEMBLY, Vacuum pump driven	1	1
12		71596	WASHER, Accessory drive gear	1	1
13		8313	GASKET, Vacuum pump	1	1
14		60430	COVER, Vacuum pump	1	1
15		STD-8	WASHER, 1/4 plain	4	4
16		STD-160	WASHER, 1/4 lock, internal teeth	4	4
17		STD-1411	NUT, 1/4-20 plain	4	4
* Assemble in crankcase front.					



**Oil Cooler Bypass Valve, Oil Pressure Screen and Breather Fitting  
Figure 19**

**ACCESSORY DRIVES****FIGURE 19 – OIL COOLER BYPASS VALVE, OIL PRESSURE SCREEN  
AND BREATHER FITTING**

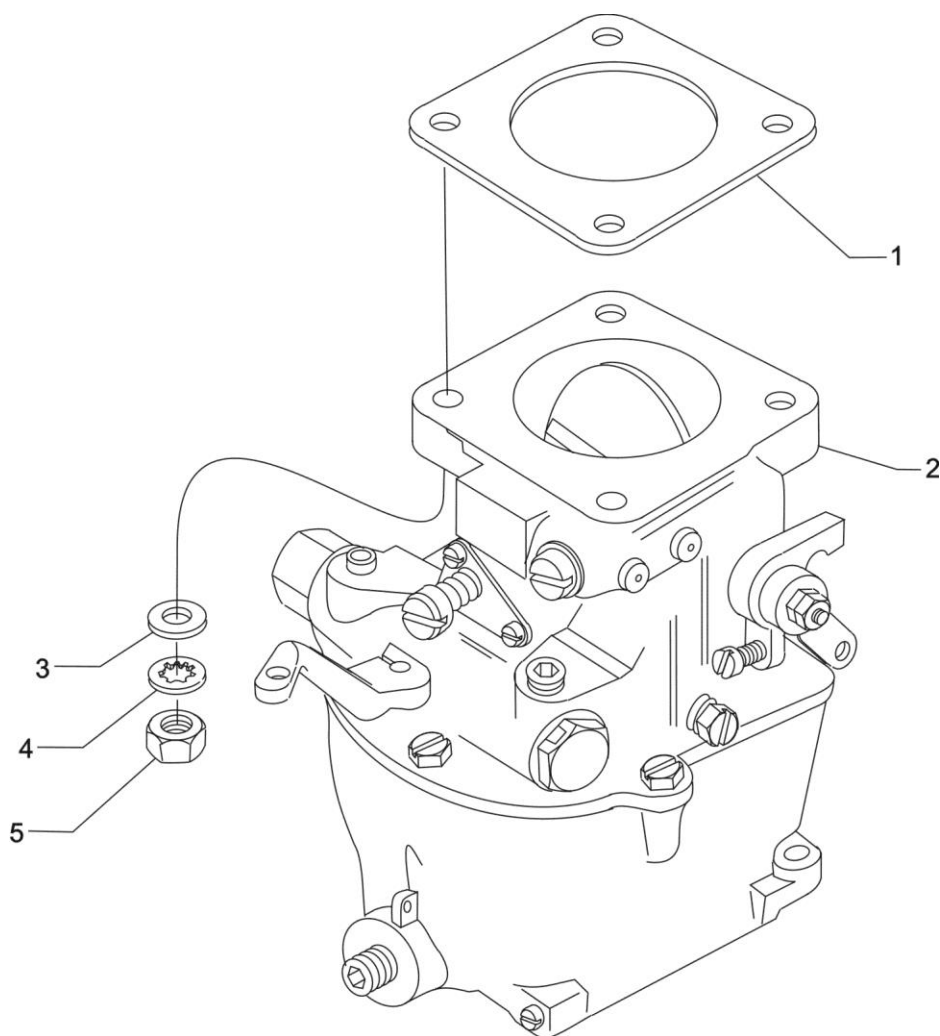
Figure Item	Code	Part Number	Description	Units per Assembly	
				E2B	E2C
1		06E19769-0.63	GASKET, 5/8 I.D. annular	1	1
2		62417	PLUG, Oil cooler bypass	1	
3		69675	CONNECTOR, Accessory housing oil cooler		1
4		STD-784	PLUG, 3/8-18 NPT, allen head	2	2
5		71623	WASHER, Oil cooler fitting		1
6		AS5163D08	ELBOW		1
7		AN901-8A	GASKET, Metal tube connect seal		1
8		71620	BOLT, 5/8-18 x 1-7/8 long, special		1
9		STD-784	PLUG, 3/8-18 NPT, allen head		2
10		72413	FITTING, Breather		1
11		71140	FITTING, Breather		1
12		62817	SCREEN ASSEMBLY, Oil pressure		1
13		61173	GASKET, Oil pressure housing		1
14		69510	HOUSING, Oil pressure screen		1
15		06E19769-0.63	GASKET, 5/8 I.D. annular		1
16		STD-8	WASHER, 1/4 plain		4
17		LW-25-1.00	BOLT, 1/4-20 x 1.00 long, hex. head		4
18		STD-160	WASHER, 1/4 lock, internal teeth		4
19		53E22144	VALVE ASSEMBLY, Temperature control, oil cooler bypass valve		1



**Oil Filter Assembly and Oil Cooler Bypass Valve**  
**Figure 20**

**ACCESSORY DRIVES****FIGURE 20 – OIL FILTER ASSEMBLY AND OIL COOLER BYPASS VALVE**

Figure Item	Code	Part Number	Description	Units per Assembly	
				E2B	E2C
1		06B23862	GASKET, Oil filter adapter	1	
2		77852	OIL FILTER BASE ASSEMBLY	1	
3		LW-13215	OIL FILTER, Short	1	
4		STD-8	WASHER, 1/4 plain	4	
5		STD-160	WASHER, 1/4 lock, internal teeth	4	
6		STD-1411	NUT, 1/4-20 plain	1	
7		LW-25-1.00	BOLT, 1/4-20 x 1.00 long, hex. head	3	
8		53E22144	VALVE ASSEMBLY, Temperature control oil cooler bypass	1	
9		76510	GASKET, Valve assembly	1	
10		25C-10	STUD, 1/4-20 x 1-1/4 long	1	
<b><u>NOTE:</u></b> Reference latest revision of SSP-885 for oil filters and replacement filters.					

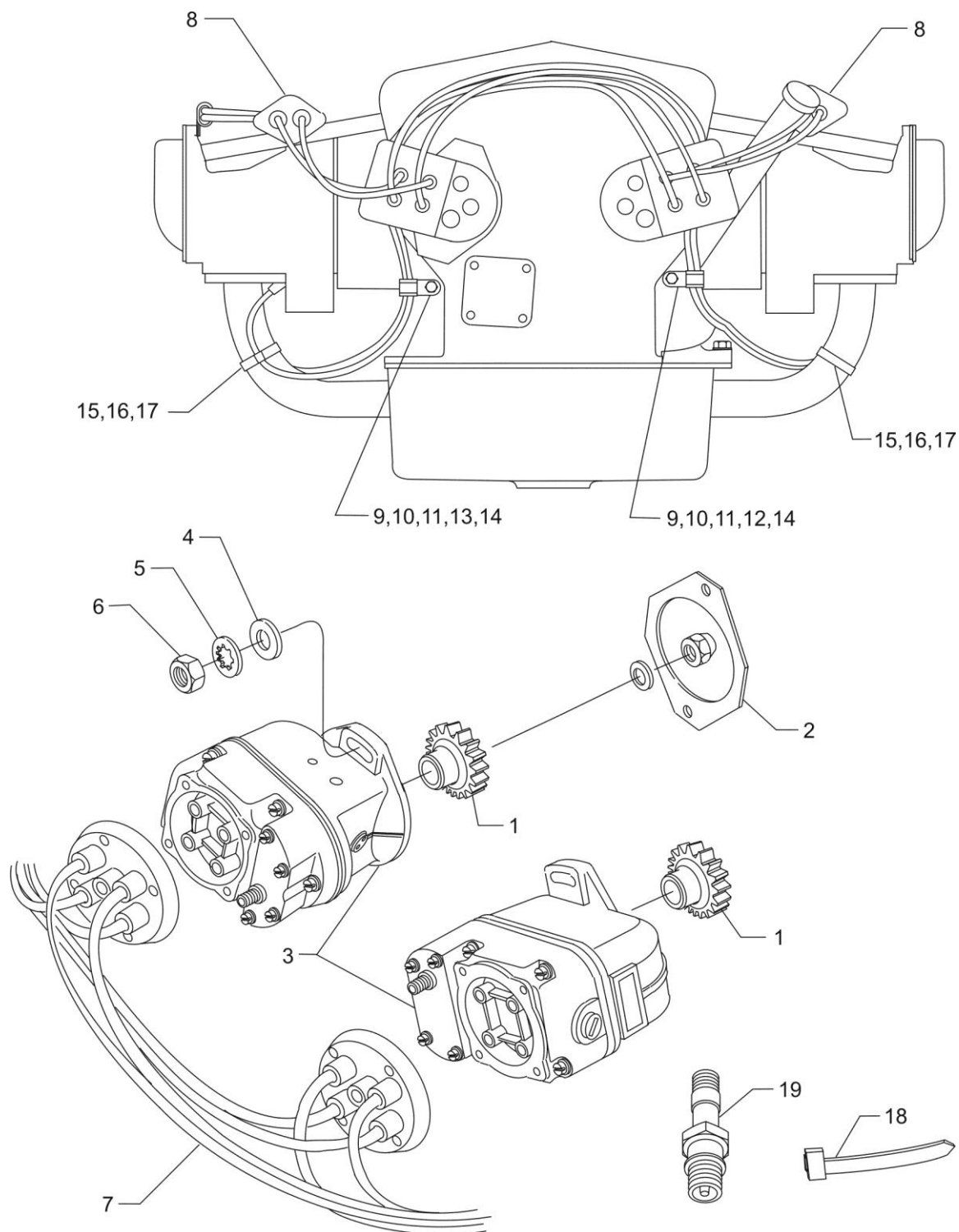


**Carburetor Assembly**  
**Figure 21**



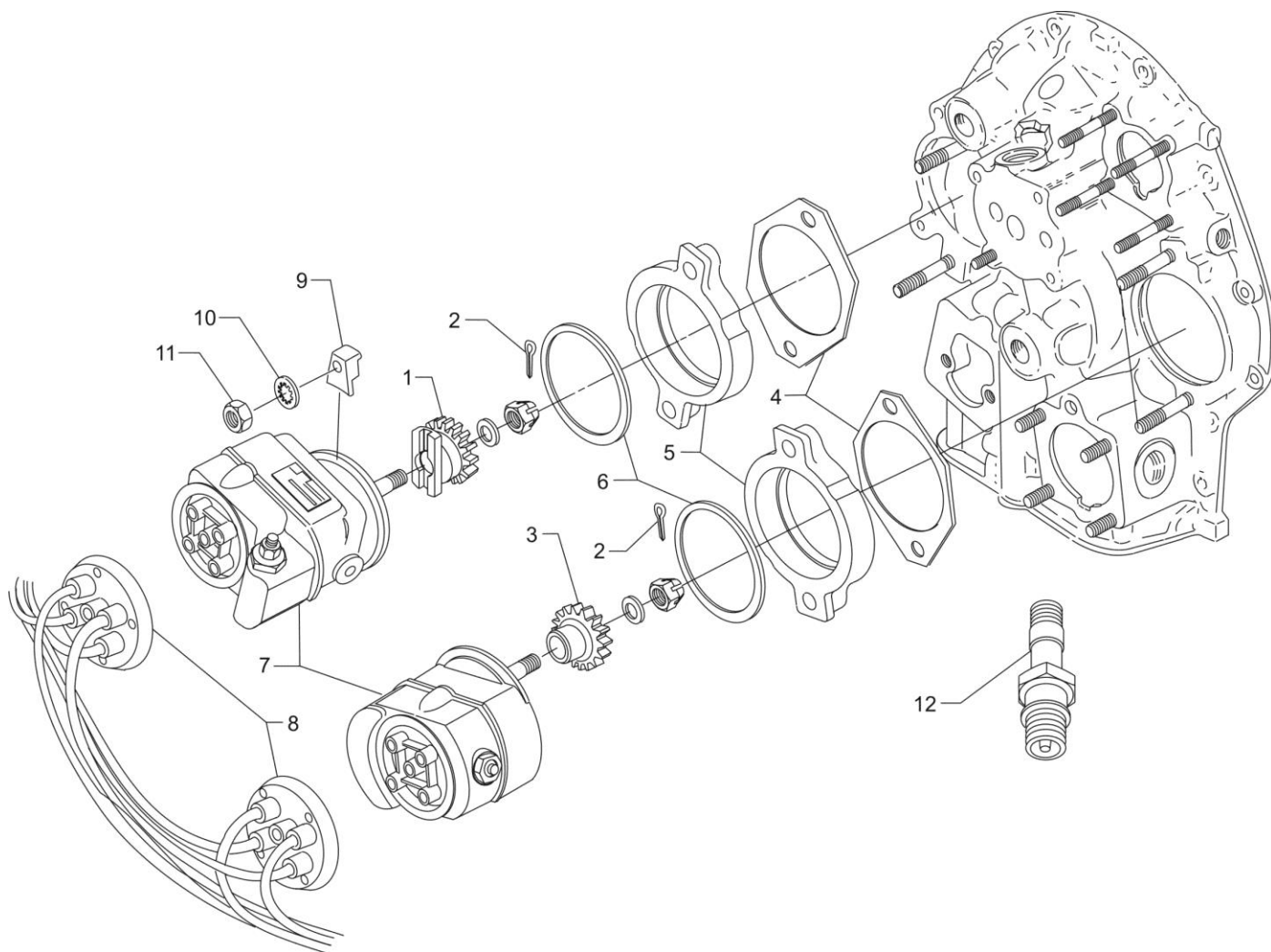
**FUEL DISTRIBUTION****FIGURE 21 – CARBURETOR ASSEMBLY**

Figure Item	Code	Part Number	Description	Units per Assembly	
				E2B	E2C
1		66224	GASKET, Carburetor	1	1
2	<b>V</b>	61B26211	CARBURETOR, MA-4SPA <b>V</b> AV 10-3678-12	1	1
	<b>V</b>	61B26213	CARBURETOR, MA-4SPA <b>V</b> AV 10-5009		1
3		STD-35	WASHER, 5/16 plain	4	4
4		STD-475	WASHER, 5/16 lock, internal teeth	4	4
5		STD-1410	NUT, 5/16-18 plain	4	4
<b>V</b> Vendor Prime Manufacturer part					

**Magnetos, Magneto Drives, Harnesses and Spark Plugs (-E2B)****Figure 22**

**IGNITION DISTRIBUTION SYSTEM****FIGURE 22 – MAGNETOS, MAGNETO DRIVES, HARNESSSES AND SPARK PLUGS (-E2B)**

Figure Item	Code	Part Number	Description	Units per Assembly	
				E2B	E2C
1		68C19622	GEAR, Magneto	2	
2		62224	GASKET, Magneto	2	
3	<b>V</b>	66B21778	MAGNETO, <b>V</b> S4LN-204	1	
	<b>V</b>	66B21772	MAGNETO, Retard breaker, <b>V</b> S4LN-200	1	
4		STD-1727	WASHER, Plain, 11/32 I.D. x 3/4 O.D.	4	
5		STD-475	WASHER, 5/16 lock, internal teeth	4	
6		STD-1410	NUT, 5/16-18 plain	4	
7		LW-M-2403	HARNESS ASSEMBLY, Left magneto	1	
		LW-M-2404	HARNESS ASSEMBLY, Right magneto	1	
8		LW-M-2375	PLATE, Spark plug cable	2	
9		LW-14060	CLIP, Two wire	2	
10		STD-8	WASHER, 1/4 plain	2	
11		STD-160	WASHER, 1/4 lock, internal teeth	2	
12		STD-1916	SCREW, 1/4-20 x 1-1/8 long, fill. head	1	
13		LW-25-1.25	BOLT, 1/4-20 x 1-1/4 long, hex. head	1	
14		STD-1411	NUT, 1/4-20 plain	2	
15		LW-18959-175-25	CLAMP, 1-3/4 I.D.	4	
16		STD-553	SCREW, No. 6-32 x 1/2 long, round head	4	
17		MS21044N06	NUT, No. 6-32 self-locking	4	
18		76734	ZIP STRAP	2	
19	<b>V*</b>	1182-E7	SPARK PLUG, Champion <b>V</b> REM38E	8	
<p><b>V</b> Vendor Primer manufacturer part</p> <p><b>*</b> Item No. 19 spark plugs are used in current production only. Additional spark plugs are available for this engine. See latest revision of Lycoming Service Instruction No. 1042 for complete listing of all approved spark plugs.</p>					



**Magnetos, Magneto Drives, Harnesses and Spark Plugs (-E2C)**  
**Figure 23**

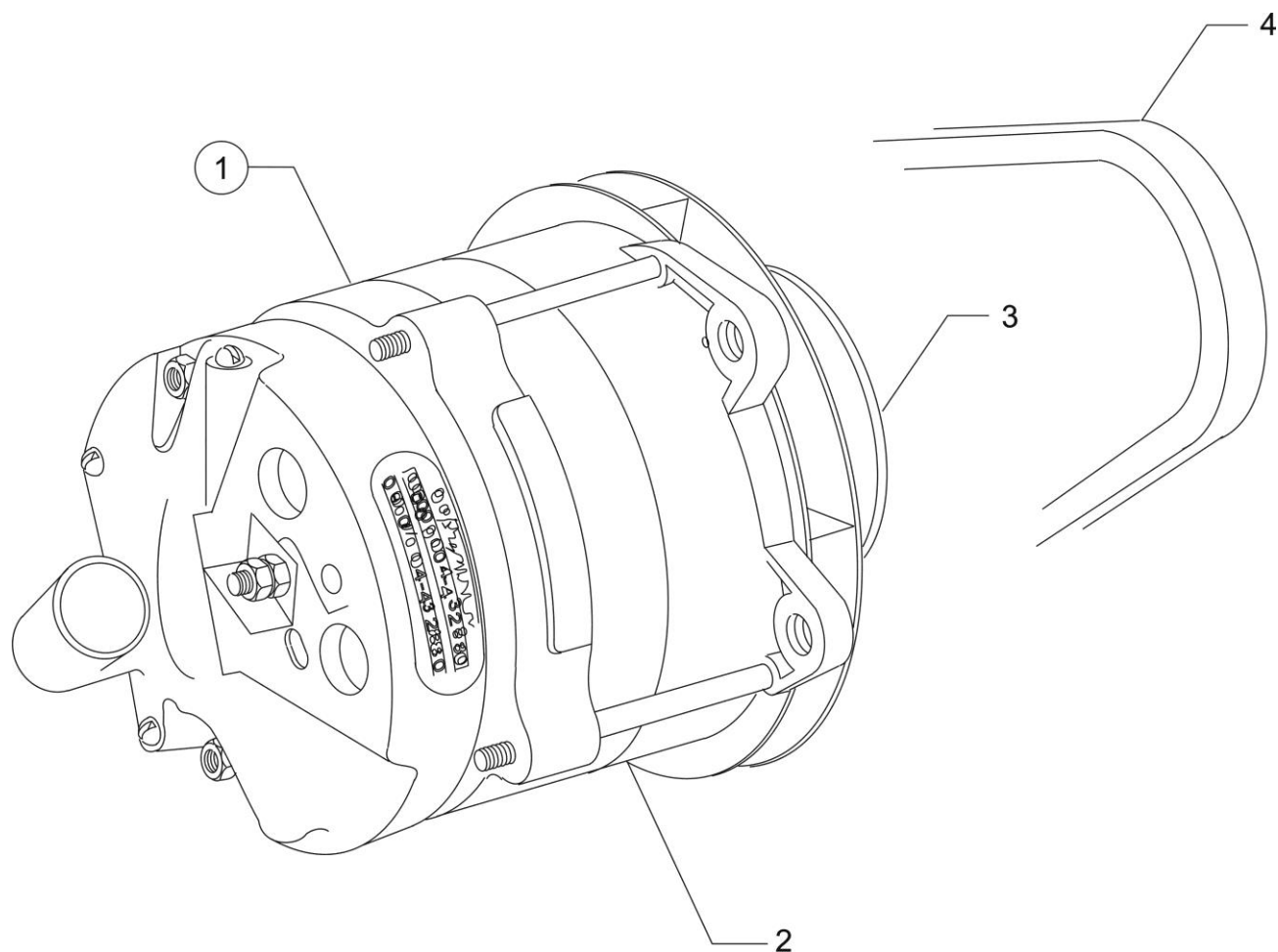
**IGNITION DISTRIBUTION SYSTEM****FIGURE 23 -MAGNETOS, MAGNETO DRIVES, HARNESSES AND SPARK PLUGS (-E2C)**

Figure Item	Code	Part Number	Description	Units per Assembly	
				E2B	E2C
1		61665	GEAR, Magneto, impulse coupling		1
2		STD-713	COTTER PIN, 3/32 diameter x 3/4 long		2
3		68C19622	GEAR, Magneto		1
4		62224	GASKET, Magneto adapter		1
5		LW-12706	ADAPTER, Magneto, impulse coupling		1
6		LW-12681	GASKET, Magneto		2
7	<b>V</b>	66GP-0SANN	MAGNETO, Plain, Slick <b>V</b> 4370		1
	<b>V</b>	66GC25SFNN	MAGNETO, Impulse, Slick <b>V</b> 4371		1
8	<b>V</b>	67P20400	HARNESS ASSEMBLY, Right, Slick <b>V</b> M2976		1
	<b>V</b>	67P20403	HARNESS ASSEMBLY, Left, Slick <b>V</b> M2977		1
9		66M21195	CLAMP, Magneto		4
10		STD-475	WASHER, 5/16 lock, internal teeth		4
11		STD-1410	NUT, 5/16-18 plain		4
12	<b>V*</b>	1182-E7	SPARK PLUG, Champion <b>V</b> REM38E		8
	<b>**</b>	01P19762-2-12	BAG, Harness attaching		1
<p><b>V</b> Vendor Prime Manufacturer part</p> <p><b>*</b> Item No. 12 spark plugs are used in current production only. Additional spark plugs are available for this engine. See latest revision of Lycoming Service Instruction No. 1042 for complete listing of all approved spark plugs.</p> <p><b>**</b> See page 46 for breakdown of individual parts contained in the magneto and harness attaching bag. These parts to be added by customer per engine line drawing included in each bag.</p>					

**01P19762-2-12 – Bag, Magneto Harness Attaching**

Part No.	Part Name	Qty.
LW-16266-25-25	CLIP, One wire	4
LW-14060	CLIP, Two wire	4
STD-8	WASHER, 1/4 plain	8
77410	BRACKET, 90°	1
STD-1874	SCREW, 1/4 lock (rocker box)	4
76734	ZIP STRAP	12
LW-16266-25-50	CLIP, Four wire	3
STD-1411	NUT, 1/4-20 plain	1
STD-696	WASHER, 1/4 plain	4
STD-1916	SCREW, 1/4-20 x 1-1/8 long, fill. head	1
STD-1925	SCREW, 1/4-20 x 5/8 long, pan. head	2
72815	BRACKET, Support clamp, 90°	3
73152	BRACKET, Support clamp	2
STD-692	SCREW, No. 10-32 x 1/2 long, round head	5
STD-425	WASHER, No. 10 plain	5
STD-670	LOCKNUT, No. 10-32	5
LW-M-2375	PLATE, Spark plug cable, two wire	2

This page intentionally left blank.

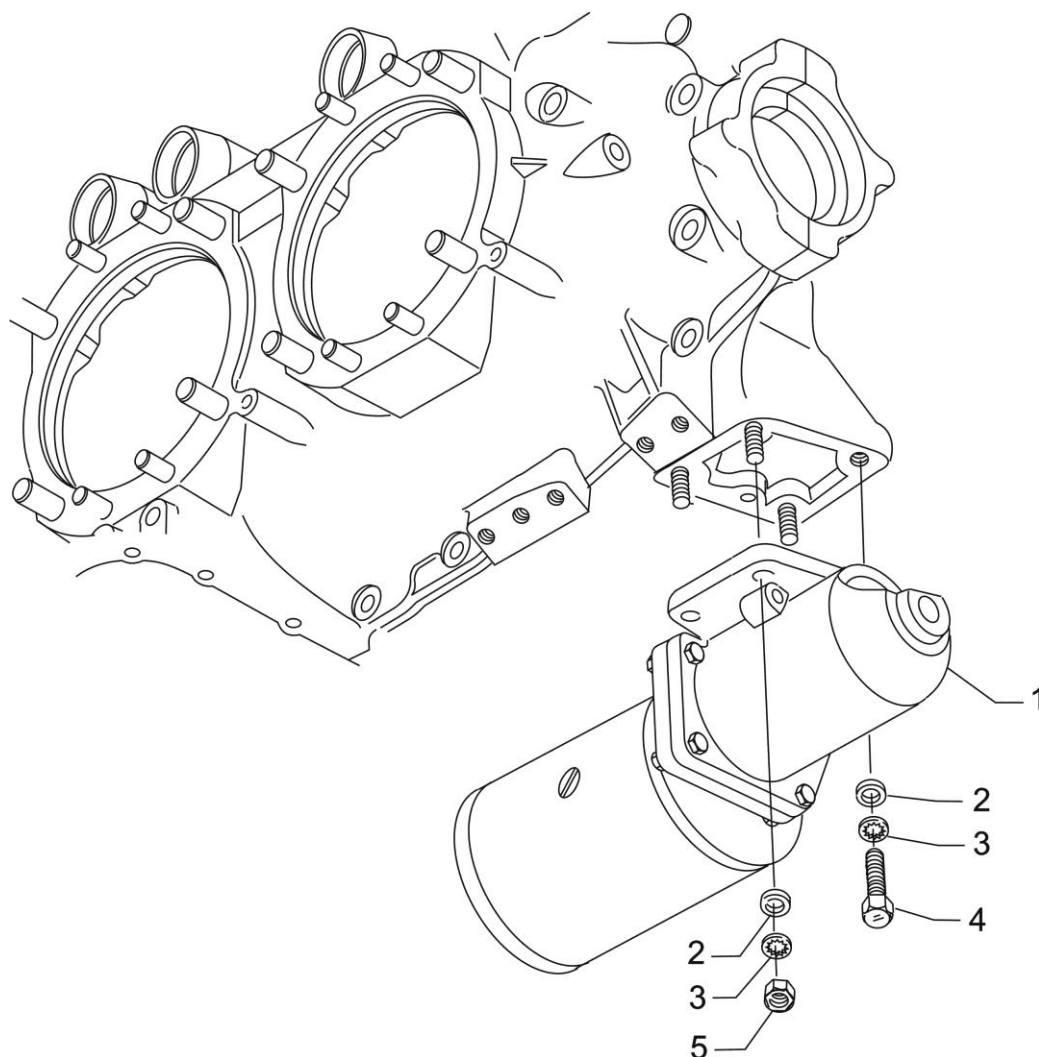


**Alternator Assembly and Belt**  
**Figure 24**



**IGNITION DISTRIBUTION SYSTEM****FIGURE 24 – ALTERNATOR ASSEMBLY AND BELT**

Figure Item	Code	Part Number	Description	Units per Assembly	
				E2B	E2C
1		LW-14371	ALTERNATOR ASSEMBLY, 12V.-60Amp.		1
2	<b>V</b>	LW-14313	ALTERNATOR, <b>V</b> ALY-8520LS		1
3		36B19484	PULLEY, Alternator		1
4		37A19773-376	BELT, Alternator drive, 3/8 wide		1
<b>V</b> Vendor Prime Manufacturer part <b>NOTE:</b> See latest revision of Lycoming Service Instruction No. 1154 for complete listing of FAA approved starters, generators, alternators, regulators and relays.					



**Starter Motor and Attaching Parts**  
**Figure 25**

**CRANKING SECTION****FIGURE 25 - STARTER MOTOR AND ATTACHING PARTS**

Figure Item	Code	Part Number	Description	Units per Assembly	
				E2B	E2C
1	<b>V</b>	31A26043	STARTER ASSEMBLY, 12V., Kelly <b>V</b> ERZ-8012	1	
	<b>V</b>	31A26041	STARTER ASSEMBLY, 12V., Kelly <b>V</b> ERZ 8011		1
2		STD-35	WASHER, 5/16 plain	4	4
3		STD-475	WASHER, 5/16 lock, internal teeth	4	4
4		LW-31-1.16	BOLT, 5/16-18 x 1-5/32 long, hex. head	1	1
5		STD-1410	NUT, 5/16-18 plain	3	3
<b>V</b> Vendor Prime Manufacturer part <b>NOTE:</b> See latest revision of Lycoming Service Instruction No. 1154 for complete listing of FAA approved starters, generators, alternators, regulators and relays.					

**SERVICE KIT SECTION****SEAL AND GASKET SET**

<b>PART NO.</b>	<b>PART NAME</b>	<b>Qty.</b>
<b>69371-1</b>	<b>KIT - SEAL AND GASKET SET</b>	<b>1</b>
LW-12272	LOCKPLATE, Shroud tube	4
LW-12681	GASKET, Magneto	2
06B23862	GASKET, Oil filter adapter	1
LW-13353	GASKET, Oil sump	1
LW-13792	CRANKSHAFT, Oil seal	1
LW-14260	SEAL, Tachometer drive, oil	1
LW-14995	SPRING, Shroud tube	4
LW-18639	LOCKPLATE, Crankshaft gear	1
LW-18661	SEAL, Shroud tube	16
77611	GASKET, Exhaust flange	4
MS29512-06	"O" RING, 15/32 I.D. x 5/64 section	1
STD-1006	RING, Oil seal, 7/16 I.D. x 3/32 diameter	1
STD-2072	"O" RING, Static seal	1
STD-213	OIL SEAL, 3/4 I.D. x 1-3/8 O.D.	1
06A19956	OIL SEAL, 7/8 I.D. x 1-1/2 O.D. x 5/16	1
STD-548	OIL SEAL, 7/8 x 1-3/8 x 5/16	1
06E19769-0.63	GASKET, Annular, 5/8 I.D.	2
06E19769-1.00	GASKET, Annular, 1.00 I.D.	1
06E19769-1.25	GASKET, Annular, 1-1/4 I.D.	2
1691-C	GASKET, Fuel pump	1
60096	GASKET, Fuel pump	1
60592	GASKET, Carburetor	1
60820	GASKET, Oil suction tube flange	1
61173	GASKET, Oil pressure housing	1
61183	GASKET, Accessory adapter	1
61531	GASKET, Hydraulic valve	1
62224	GASKET, Magneto adapter	4
66224	GASKET, Carburetor	2
68315	GASKET, Accessory drive adapter	1
69164	GASKET, Fuel pump adapter	1
69345	SPACER	4
69551	GASKET, Accessory drive adapter	1
69720	GASKET, Dual accessory drive	1
69827	GASKET, Governor spacer	1

**SERVICE KIT SECTION (CONT.)****SEAL AND GASKET SET (CONT.)**

<b>69371-1</b>	<b>KIT – SEAL AND GASKET SET (CONT.)</b>	<b>1</b>
70310	SEAL, Shroud tube	8
70455	GASKET, 25/32 I.D. x 1-1/8 O.D. x 1/32	1
71481	RING, Oil seal, 3/32 diameter x 4-27/32 I.D.	4
71973	GASKET, 2 bolt flange, 1-13/16 I.D.	4
72053	GASKET, Governor	2
72059	GASKET, Oil level gage	1
72075	SEAL, Oil, 3/32 section x 29/64 I.D.	6
72078	LOCKPLATE, 5/16 bolt x 1-21/64 sp	2
72091	RING, Oil seal, 3/8 x 7/64 diameter	2
72312	RING, Oil seal, 1.00 x 1-5/16	1
72879	LOCKPLATE, 1/4 bolt x 1-3/4 sp	1
73383	LOCKPLATE, 5/16 bolt x 1.00	2
73817	LOCKPLATE, 1/4 bolt x 1-3/4 sp	2
73818	GASKET, Accessory housing	1
74065	RING, Oil level gage seal	1
74068	RING, Oil level gage plug	1
74524	RING, Oil level gage bushing	1
75906	GASKET, Rocker box cover	4
76510	GASKET, Oil cooler bypass	1
76940	SEAL, Crankshaft oil	1
8313	GASKET, Vacuum pump	2
06A23493	SEAL, Shroud tube	8

**SERVICE KIT SECTION (CONT.)**  
**CYLINDER, PISTON AND RING ASSEMBLY**

PART NO.	PART NAME	Qty.
05K21237-A	KIT - CYLINDER, PISTON AND RING ASSEMBLY	1
LW-12416	CYLINDER ASSEMBLY	1
17A23938	VALVE, Intake	1
17B23936	VALVE, Exhaust	1
65441	SEAT, Valve spring, lower intake	1
LW-13323	SEAT, Valve spring, lower	1
LW-11800	SPRING, Valve, outer	2
LW-11795	SPRING, Valve inner	2
LW-10077	SEAT, Valve spring, upper	1
LW-16475	SEAT, Valve spring, upper exhaust	1
60009	KEY, Valve, intake	2
17C21191	KEY, Valve, exhaust	2
MS20823-6D	ELBOW, 45°, 3/8 flared tube	1
17C19386	CAP, Valve stem, exhaust (rotator)	1
1102	PLUG, 1/8-27 NPT, allen head	2
14D23915	PISTON	1
74241	RING, Piston, compression	2
14H21950	RING, Piston, oil	1
LW-14078	PIN, Piston	1
72198	PLUG, Piston pin	2
71481	RING, Oil seal, 3/32 diameter x 4-27/32 I.D.	1
70310	SEAL, Shroud tube	2
LW-18661	SEAL, Shroud tube	2
75906	GASKET, Rocker box cover	1
SSP-109	TAG, Use of piston pins	1
77611	GASKET, Exhaust flange	1
71973	GASKET, 2 bolt flange	1
LW-12272	LOCKPLATE, Shroud tube	1
SSP-299	TAG, Use of piston pin plugs	1
06A23493	SEAL, Shroud tube	2

**SERVICE KIT SECTION (CONT.)****CRANKCASE ASSEMBLY AND THRU-STUD KIT**

<b>PART NO.</b>	<b>PART NAME</b>	<b>Qty.</b>
<b>11B20061-1SL-S</b>	<b>KIT - CRANKCASE ASSEMBLY AND THRU-STUD</b>	<b>1</b>
11B20061-1SL	CRANKCASE ASSEMBLY	1
76220	THRU-STUD	4
74887	SPACER, 33/64 I.D. x 7/8 O.D. x 3/8 thick	2
STD-2090	NUT, 1/4-20 plain	2
1102	PLUG, 1/8-27 NPT, allen head	6
STD-1339	PLUG, 1/16-27 NPT, allen head	4
69796	DOWEL, Crankshaft bearing	2

**CRANKCASE ASSEMBLY AND THRU-STUD KIT (ROLLER TAPPET ENGINES)**

<b>PART NO.</b>	<b>PART NAME</b>	<b>Qty.</b>
<b>11B20161-1SL-S</b>	<b>KIT - CRANKCASE ASSEMBLY AND THRU-STUD</b>	<b>1</b>
11B20161-1SL	CRANKCASE ASSEMBLY (Roller tappet engines)	1
76220	THRU-STUD	4
74887	SPACER, 33/64 I.D. x 7/8 O.D. x 3/8 thick	2
STD-2090	NUT, 1/4-20 plain	2
1102	PLUG, 1/8-27 NPT, allen head	6
STD-1339	PLUG, 1/16-27 NPT, allen head	4
69796	DOWEL, Crankshaft bearing	2

**NUMERICAL INDEX**

PART NO.	PART NAME	PAGE NO.	PART NO.	PART NAME	PAGE NO.
AN6-14	Bolt	1	LW-14260	Seal	31
AN6-16	Bolt	1	LW-14313	Alternator	49
AN6-34A	Bolt	11	LW-14371	Alternator Assy.	49
AN901-8A	Gasket	37	LW-14780	Gage Assy.	25
AN960-616L	Washer	11	LW-14995	Spring	17
AS5163D08	Elbow	37	LW-15472	Fuel Pump	33
LRT23381	Body Assy.	5	LW-15592-5-05	Clamp	21
LW-25-0.94	Bolt	27	LW-15592-8-28	Clamp	23
LW-25-0.94	Bolt	31	LW-16475	Seat	17
LW-25-1.00	Bolt	37	LW-16783-18	Gage Assy.	25
LW-25-1.00	Bolt	39	LW-18085	Spring	5
LW-25-1.13	Bolt	11	LW-18109	Impeller	31
LW-25-1.13	Bolt	27	LW-18110	Impeller Assy.	31
LW-25-1.13	Bolt	31	LW-18639	Lockplate	7
LW-25-1.25	Bolt	23	LW-18661	Seal	17
LW-25-1.25	Bolt	43	LW-18667	Pin	9
LW-25-1.44	Bolt	31	LW-18840	Camshaft Assy.	9
LW-25-1.50	Bolt	11	LW-18921-S	Bushing	7
LW-25-1.75	Bolt	11	LW-18922-S	Bushing	7
LW-25S1.50	Bolt	11	LW-18959-175-25	Clamp	43
LW-31-0.94	Bolt	1	LW-M-2375	Plate	43
LW-31-1.16	Bolt	51	LW-M-2403	Harness Assy.	43
LW-31H0.75	Bolt	1	LW-M-2404	Harness Assy.	43
LW-31H0.88	Bolt	1	MS20823-6D	Elbow	15
LW-31H0.88	Bolt	9	MS21044N06	Nut	43
LW-10077	Seat	17	STD-8	Washer	11
LW-10828	Sump Assy.	27	STD-8	Washer	23
LW-11713	Spring	5	STD-8	Washer	27
LW-11795	Spring	17	STD-8	Washer	31
LW-11800	Spring	17	STD-8	Washer	35
LW-11955	Link	1	STD-8	Washer	37
LW-12186	Nut	13	STD-8	Washer	39
LW-12272	Lockplate	17	STD-8	Washer	43
LW-12416	Cylinder Assy.	15	STD-33	Washer	11
LW-12545	Plug	27	STD-33	Washer	33
LW-12681	Gasket	45	STD-35	Washer	1
LW-12706	Adapter	45	STD-35	Washer	15
LW-12892	Thrust Button	19	STD-35	Washer	31
LW-13215	Oil Filter	39	STD-35	Washer	35
LW-13323	Seat	17	STD-35	Washer	41
LW-13353	Gasket	27	STD-35	Washer	51
LW-13790	Shaft	19	STD-91	Plug	27
LW-13792	Seal	5	STD-160	Washer	11
LW-13793	Stud	3	STD-160	Washer	23
LW-13796	Shaft	9	STD-160	Washer	27
LW-13923	Bushing	13	STD-160	Washer	31
LW-14060	Clip	43	STD-160	Washer	35
LW-14078	Pin	13	STD-160	Washer	37



**NUMERICAL INDEX (CONT.)**

<b>PART NO.</b>	<b>PART NAME</b>	<b>PAGE NO.</b>	<b>PART NO.</b>	<b>PART NAME</b>	<b>PAGE NO.</b>
STD-160	Washer	39	STD-2168	Nut	9
STD-160	Washer	43	STD-2180	Hose	21
STD-475	Washer	15	STD-2231	Ring	9
STD-475	Washer	35	STD-2246	Bolt	7
STD-475	Washer	41	STD-2249	Nut	11
STD-475	Washer	43	25C-8	Stud	15
STD-475	Washer	45	25C-10	Stud	39
STD-475	Washer	51	25C-22	Stud	29
STD-514	Dowel	3	31C-12	Stud	3
STD-533	Screw	43	31C-12	Stud	15
STD-551	Plug	27	31C-12	Stud	29
STD-557	Dowel	3	31C-13	Stud	3
STD-596	Nut	11	31C-13	Stud	29
STD-678	Washer	11	31C-15	Stud	27
STD-684	Nipple	21	31C-19	Stud	29
STD-690	Washer	1	31CD-17	Stud	29
STD-713	Cotter Pin	1	38-13	Stud	3
STD-713	Cotter Pin	45	38D-17	Stud	3
STD-783	Plug	35	50-15	Stud	3
STD-784	Plug	29	383-B	Nut	19
STD-784	Plug	37	1028-B	Ball	5
STD-872	Nut	1	1102	Plug	3
STD-872	Nut	11	1102	Plug	15
STD-1065	Dowel	7	1102	Plug	29
STD-1211	Plug	7	1182-E7	Spark Plug	43
STD-1339	Plug	3	1182-E7	Spark Plug	45
STD-1353	Insert	15	8313	Gasket	35
STD-1410	Nut	15	60009	Key	17
STD-1410	Nut	35	60096	Gasket	33
STD-1410	Nut	41	60430	Cover	35
STD-1410	Nut	43	60803	Strap	11
STD-1410	Nut	45	60882	Gear	7
STD-1410	Nut	51	61084	Spring	5
STD-1411	Nut	11	61098	Adapter Assy.	35
STD-1411	Nut	17	61173	Gasket	37
STD-1411	Nut	27	61174	Shaft	31
STD-1411	Nut	35	61183	Gasket	35
STD-1411	Nut	39	61247	Cover	19
STD-1411	Nut	43	61400	Stud	27
STD-1420	Nut	31	61544	Plunger	9
STD-1623	Insert	3	61665	Gear	45
STD-1727	Washer	1	62224	Gasket	43
STD-1727	Washer	43	62224	Gasket	45
STD-1774	Pin	35	62417	Plug	37
STD-1882	Screw	33	62817	Screen Assy.	37
STD-1916	Screw	43	65441	Seat	17
STD-1925	Screw	19	66224	Gasket	41
STD-2090	Nut	19	66610	Bushing	15

**NUMERICAL INDEX (CONT.)**

PART NO.	PART NAME	PAGE NO.	PART NO.	PART NAME	PAGE NO.
66796	Insert	15	75906	Gasket	19
68668	Spring	5	76118	Spacer	9
68759	Tube Assy.	21	76119	Shield	29
68760	Tube Assy.	21	76121	Shaft Assy.	9
68761	Tube Assy.	21	76220	Stud	11
68867	Support Assy.	7	76510	Gasket	39
68987	Shroud Tube Assy.	17	76534	Shim	1
69106	Cover	35	76628	Support Assy.	7
69510	Housing	37	76734	Zip Strap	43
69551	Gasket	35	76943	Guide	15
69603	Hose	23	77309	Bushing	9
69675	Connector	37	77467	Spring	5
69796	Dowel	3	77611	Gasket	15
70310	Seal	17	77808	Valve Assy.	5
70484	Screen	27	77852	Oil Filter Base Assy.	39
71140	Fitting	37	78027	Bolt	13
71481	Ring	19	78030-S	Conn. Rod Assy.	13
71596	Washer	35	78531	Body Assy.	31
71610	Hook	21	78914	Connection	27
71611	Retainer	21	01L23459	Washer	17
71620	Bolt	37	01P19762-2-12	Bag, Harness	45
71623	Washer	37	05K19423-S	Impeller Kit	31
71973	Gasket	23	06A19956	Oil Seal	35
72057	Seat	15	06A23493	Seal	17
72058	Seat	15	06B23862	Gasket	39
72059	Gasket	25	06E19769-0.63	Gasket	37
72075	Seal	5	06E19769-1.00	Gasket	27
72091	Ring	5	06E19769-1.25	Gasket	5
72198	Plug	13	07A19474	Bracket	1
72413	Fitting	37	07F23268	Strut	1
72566	Gear	7	11B20061-1SL	Crankcase Assy.	3
72569	Baffle Assy.	21	11B20061-1SL-S	Crankcase Assy. Kit	3
72970	Gear Assy.	35	11B20161-1SL	Crankcase Assy.	3
73346	Flange	23	11B20161-1SL-S	Crankcase Assy. Kit	3
73383	Lockplate	1	13B47024	Crankshaft Assy.	7
73818	Gasket	29	13S19646	Gear	7
74065	Ring	25	14D23915	Piston	13
74068	Ring	25	14H21950	Ring	13
74084	Pipe	23	15B21319	Socket	17
74241	Ring	13	15B26064	Body	5
74637	Bushing	19	15B26066	Plunger Assy.	17
74887	Spacer	19	15F19957-09	Rod Assy.	19
74996	Gear Assy.	9	15F19957-10	Rod Assy.	19
75072	Gear Assy.	9	15F19957-11	Rod Assy.	19
75154	Stud	3	15F19957-12	Rod Assy.	19
75380	Link	1	15F19957-13	Rod Assy.	19
75736	Tube	25	15G13494	Shroud Tube Assy.	17
75737	Tube	25	15M23452	Camshaft Assy.	9

**NUMERICAL INDEX (CONT.)**

<b>PART NO.</b>	<b>PART NAME</b>	<b>PAGE NO.</b>	<b>PART NO.</b>	<b>PART NAME</b>	<b>PAGE NO.</b>
16R22126	Guide	15	37A19773-376	Belt	49
17A23938	Valve, Intake	17	53E22144	Valve Assy.	37
17B23936	Valve, Exhaust	17	53E22144	Valve Assy.	39
17C19386	Cap	17	61B26211	Carburetor	41
17C21191	Key	17	61B26213	Carburetor	41
17F19357	Rocker Assy.	19	66B21772	Magneto	43
18D26093	Bearing	5	66B21778	Magneto	43
18D26096	Bearing	5	66GC25SFNN	Magneto	45
18D26098	Bearing	5	66GP-0SANN	Magneto	45
18M26104	Bearing	13	66M21195	Clamp	45
21A21533-04	Housing Assy.	29	67P20400	Harness Assy.	45
21A21533-06	Housing Assy.	29	67P20403	Harness Assy.	45
31A26041	Starter Assy.	51	68C19622	Gear	43
31A26043	Starter Assy.	51	68C19622	Gear	45
36B19484	Pulley	49			