

652 Oliver Street  
Williamsport, PA. 17701 U.S.A.

Tel. 570-323-6181  
Fax. 570-327-7101  
www.lycoming.textron.com

# SERVICE INSTRUCTION

DATE: May 5, 2006

Service Instruction No. 1105B  
(Supersedes Service Instruction No. 1105A)

SUBJECT: Periodic Inspection of Generator/Alternator Mounting Brackets

MODELS AFFECTED: All Lycoming four cylinder direct drive aircraft engines except those with the Lycoming P/N 73383 lock plate.

TIME OF COMPLIANCE: During 100-hour inspection periods.

On certain older four cylinder model engines, either the generator or alternator is mounted to the crankcase using the crankcase perimeter bolts. See Figure 1. On later versions of those four cylinder model engines, either the generator or alternator is mounted to the crankcase using an assembly that includes the P/N 73383 lock plate. This assembly mounts either the generator or alternator through a mounting pad on the crankcase rather than by the crankcase perimeter bolts. See Figure 2.

For those engines where generators or alternators are mounted by the crankcase perimeter bolts, service experience has shown that looseness of the generator or alternator mounting bracket could result in a cracked crankcase. Therefore, it is recommended that the crankcase perimeter bolts as shown in Figure 1, attaching either the generator or alternator mounting bracket to the crankcase be checked for tightness during 100-hour inspection periods to insure that the torque value is maintained. Check the latest revision of the Table of Limits for the correct torque value.

Engines that have the generator or alternator bracket attached to the crankcase at the mounting pad as shown in Figure 2, and use the P/N 73383 lock plate do not need to comply with this Service Instruction.

## NOTE

The illustrations shown in this Service Instruction are typical of the subject matter they portray; in no instance are they to be interpreted as examples of any specific engine.

NOTE: Revision "B" revises text and adds Figure 1 and Figure 2.

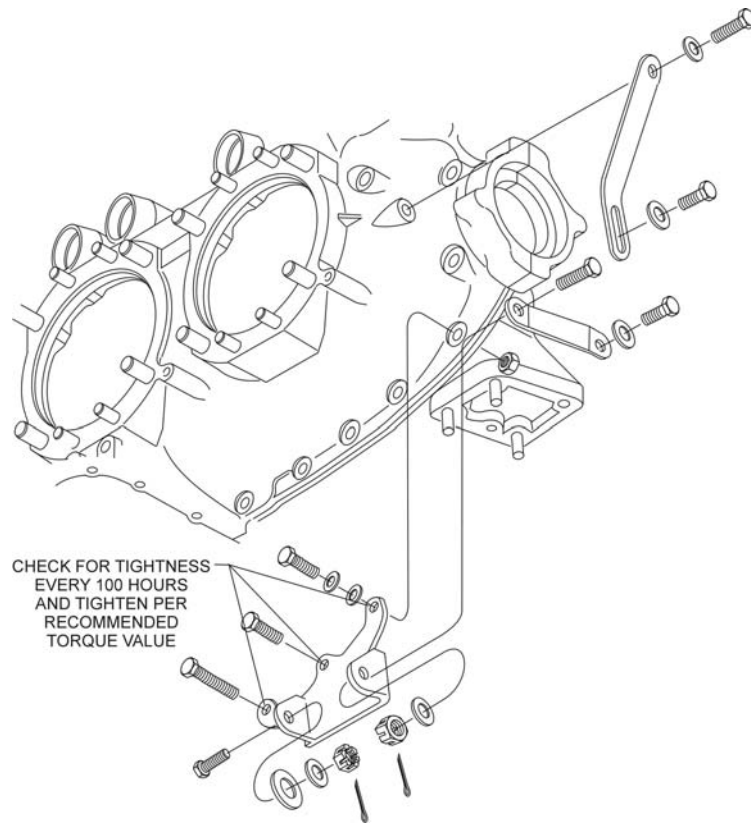


Figure 1.

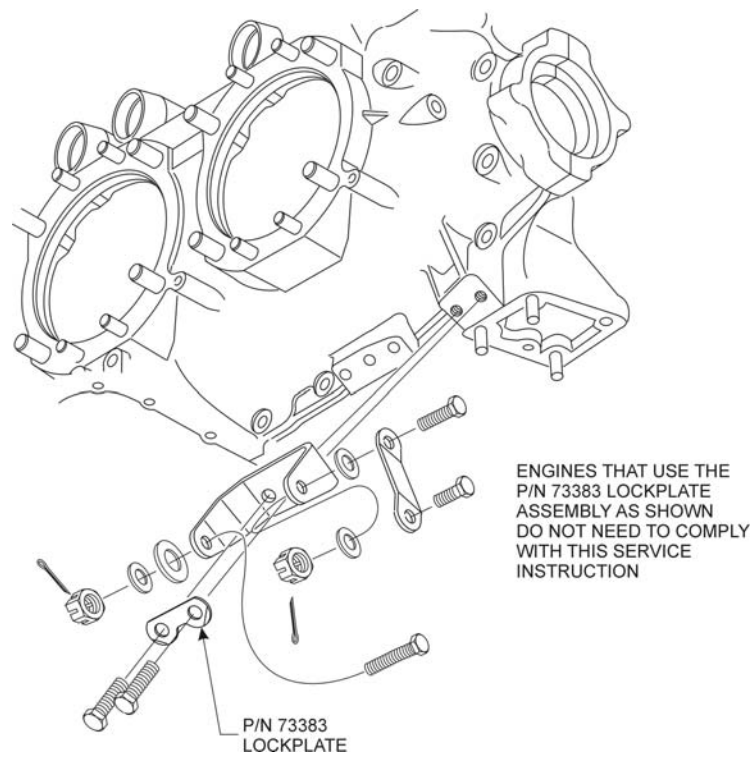


Figure 2.