

# **AEIO-360-B1F**

## **Illustrated Parts Catalog**

---

**June 2025**

**PC-AEIO-360-B1F**

---



652 Oliver Street  
Williamsport, PA 17701

## **AEIO-360-B1F Illustrated Parts Catalog**

Lycoming Part Number: PC-AEIO-360-B1F

### **For additional information:**

#### **Mailing address:**

Lycoming Engines  
652 Oliver Street  
Williamsport, PA 17701 U.S.A.

#### **Phone:**

Product Support: U.S. and Canada toll free: +1-877-839-7878  
International Customers: +1-570-323-7222

Lycoming Product Support regular business hours are:

Monday through Thursday from 8:00 A.M. through 10:00 P.M. Eastern Time (-5 GMT)

Friday from 8:00 A.M. through 6:00 P.M. Eastern Time (-5 GMT)

or Email: [Technicalsupport@lycoming.com](mailto:Technicalsupport@lycoming.com)

#### **Visit us online at:**

[www.lycoming.com](http://www.lycoming.com)



©2025 Lycoming. All Rights Reserved.

Lycoming and "Powered by Lycoming" are trademarks or registered trademarks of Lycoming.

Lycoming Engines, a division of AVCO Corporation.

All brand and product names referenced in this publication are trademarks or registered trademarks of their respective companies.

---



## **Record of Revisions**

**NOTICE:** Service Documents with a later release date than this parts catalog override parts information in this document.

<b>Rev No.</b>	<b>Revision Changes</b>	<b>Issue Date</b>
--	Initial Release of PC-AEIO-360-B1F	June 2025


This page intentionally left blank.

## TABLE OF CONTENTS

<u>Subject</u>	<u>Chapter - Section</u>	<u>Page</u>
<b>Frontal</b>		
Record of Revisions .....		i
Table of Contents .....		iii
Introduction .....		v
Abbreviations and Acronyms .....		ix
Oversize and Undersize Part Listing .....		xi
<b>Electrical Power</b>	<b>24-00</b>	
<b>DC Generation</b> .....	24-20	
1. Alternator Attaching Parts .....		0-1
2. Alternator Assembly and Belt .....		2-3
<b>Reciprocating Engine</b>	<b>72-00</b>	
<b>Power Section</b> .....	72-20	
1. Crankcase Assembly .....		4-5
2. Crankcase Related Parts .....		6-7
3. Crankshaft Assembly and Related Parts .....		8-9
4. Crankshaft Idler Gears, Tachometer Drive, and Camshaft .....		10-11
5. Crankcase Attaching Parts .....		12-13
<b>Cylinder Section</b> .....	72-30	
1. Connecting Rods, Pistons and Ring Assemblies .....		14-15
2. Cylinder Assembly .....		16-17
3. Cylinder Related Parts .....		18-19
4. Valve Assembly and Related Parts .....		20-21
5. Cylinder Head Drain Tubes, Intercylinder Cooling Baffles, and Rocker Box Covers .....		22-23
6. Intake Pipes Assembly .....		24-25
<b>Lubrication System</b> .....	72-50	
1. Oil Sump Assembly, Oil Suction Screen, and Inverted Oil System .....		26-27
2. Oil Filter Assembly, Oil Cooler Bypass Valve, and Fittings .....		28-29
3. Oil Level Gage .....		30-31

<b><u>Subject</u></b>	<b><u>Chapter - Section</u></b>	<b><u>Page</u></b>
<b>Accessory Drives</b> .....	72-60	
1. Accessory Housing Assembly.....		32-33
2. Oil Pump Assembly and Accessory Housing Attaching Parts .....		34-35
3. Fuel Pump Assembly and Attaching Parts .....		36-37
4. Propeller Governor Drive, Cover, Oil Lines and Adapter Assembly.....		38-39
5. Vacuum Pump Drive Cover .....		40-41
<b>Engine and Fuel Control</b> .....	<b>73-00</b>	
<b>Fuel Distribution</b> .....	73-10	
1. Fuel Injector, Fuel Manifold, and Injection Nozzles .....		42-43
2. Fuel Lines and Attaching Parts .....		44-45
<b>Ignition Distribution System</b> .....	<b>74-00</b>	
<b>Distribution</b> .....	74-20	
1. Magnetos, Magneto Drives, Harnesses, and Spark Plugs .....		46-47
<b>Starting</b> .....	<b>80-00</b>	
<b>Cranking</b> .....	80-10	
1. Starter Attaching Parts.....		48-50
<b>Back Section</b> .....		
<b>Service Kit Section</b> .....		51-54
<b>Numerical Index</b> .....		55-60

# INTRODUCTION

** CAUTION:** DO NOT USE THIS CATALOG AS AN ASSEMBLY OR INSTALLATION DOCUMENT. THIS CATALOG MUST ONLY BE USED TO IDENTIFY PARTS IN CONJUNCTION WITH THE APPLICABLE MAINTENANCE OR OVERHAUL MANUAL.

PART NUMBERS AND DESCRIPTIONS IN THIS PARTS CATALOG ARE NOT  
AUTHORITATIVE AND CAN BE SUPERSEDED BY FAA APPROVED SERVICE  
BULLETINS AND SERVICE INSTRUCTIONS.

## Purpose of this Catalog

This Illustrated Parts Catalog (IPC) contains a complete list of spare parts for the Lycoming AEIO-360-B1F wide cylinder flange model engine.

## How to Use this Catalog

This catalog is based on the Air Transport Association (ATA) Spec 100 format. In order to clarify illustrations, Lycoming has taken discretion to classify non-system related assemblies and components in the same chapters, because they are physically connected.

This catalog is frequently updated by Service Bulletins (SB) and Service Instructions (SI). The updated information will be incorporated into subsequent full revisions of this catalog.

The ATA two element numbering system provides consistency throughout various manuals. The bottom of each page (beyond the frontal section) contains a two-element number (##-##). In the two-element numbering, the first two digits represent a chapter, and the next two digits subdivide the material into a more specific section.

The ATA format specifies the subject matter for each chapter-section. According to the ATA Standards, the following chapters apply to the AEIO-360-B1F Illustrated Parts Catalog:

24 (Electrical Power), 72 (Reciprocating Engine), 73 (Engine and Fuel Control), 74 (Ignition), and 80 (Starting).

**EXAMPLE:**      **74**      —      **20**  
Chapter                      Section  
**Ignition**                      **Distribution**

**NOTE:** See the IPC Table of Contents for the sub-systems listed in each section.

## Numerical Index

The Numerical Index is a single list of part numbers, names and their locations within the IPC. It is useful for locating parts when you only know the number or name of the part.

### Description column

Indentation of a part name represents a lower level of assembly. Attaching parts have the same indentation level and are below their associated parts grouping or assembly. This column is often referred to as the "Nomenclature" on other ATA Spec manuals.

## Units per Assembly Column

Where more than one assembly exists, this column contains the quantity of a specific part required in the build sequence of only one next higher assembly. The letters “AR” represent “as required” for bulk items or non-illustrated select-from-range-parts. “RF” represents items listed for reference purposes only.

## Lockwire, Safety Cable

To maintain as assembled torque integrity Lockwire used is to be a one continuous strand twisted to keep tension on various internal fasteners ensuring a minimum torque is retained. Lockwire installed correctly will pull in the direction of fastener assembled tension. Lycoming Engines does not recommend the use of safety cable for retention of internal engine parts or assemblies. Refer to the latest revision of **Service Instruction No. 1566**.

## Vendor Accessories

Parts coverage of Vendor Accessories used on Lycoming engines may be found in the appropriate Vendor’s Parts Catalog. A list of vendor’s addresses appears in the latest revision of Lycoming Service Letter No. L114.

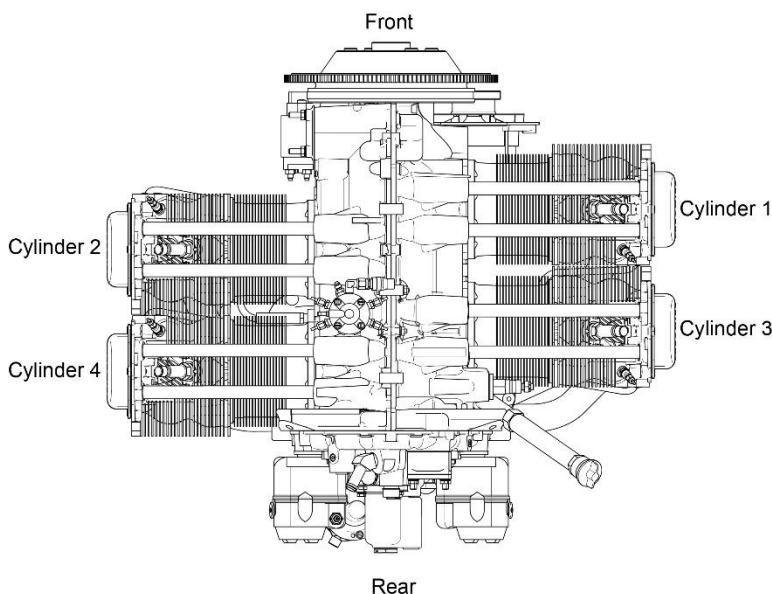
Any reference in this document to the suppliers/part manufacturer’s product, by name, trademark, part number or other description is solely for the purpose of identification and does not indicate or infer that Lycoming accepts responsibility for quality control and/or airworthiness of parts, which do not pass through the Lycoming quality control system.

## Environmental Compliance

Lycoming is concerned with preserving the environment. Lycoming strongly urges engine owners and repair/overhaul personnel to observe and comply with all federal, state, and local environmental regulations when solvents, paint, fuel, oil, chemicals, or other consumables are used in operating, maintaining, or overhauling an engine component. Please share our concern for, and commitment to a clean earth, clean water, and especially clean air for succeeding generations of flyers.

## Perspective of References

In this manual, all references to locations of various components will be designated as if viewing the engine from the rear (or anti-propeller) end. The front of the engine is considered to be the propeller end and the oil sump is considered to be on the bottom of the engine. Cylinders are numbered from front to rear with the odd-numbered cylinders on the right-hand side. The firing order for this engine is 1-3-2-4.



**Top View of Engine**



## How to Order Parts

To order parts from this parts catalog, contact an Authorized Lycoming Distributor with the part number(s), nomenclature, and quantity along with the model and serial number of your engine. Authorized Lycoming Distributors will have up-to-date part number supersedure, pricing, and availability information on parts listed in this parts catalog.

An Oversize and Undersize Parts List is included in the front section of this catalog to aid in ordering parts as necessary during maintenance or overhaul.

To supply any comments, suggestions, or corrections to this parts catalog, go online to the Lycoming.com website on the internet.

### **NOTE:**

Lycoming recommends that owners of this manual sign up for email notification on the Technical Publications page of our website <https://www.lycoming.com/contact/knowledge-base/publications>. By submitting your email address, you will receive notification whenever Lycoming publishes a new or revised technical publication, including any revisions to this parts catalog.

©2025 by Lycoming. "All Rights Reserved." All Lycoming publications are to be considered copyrighted and may not be reproduced without permission of the company.

This page intentionally left blank.

**Abbreviations and Acronyms**

<b>A</b>	
Adj.	Adjustable
amp.	Ampere
Assy	Assembly
<b>F</b>	
F	Flat Tappet
Fill.	Fillister
<b>H</b>	
Hex.	Hexagon
<b>I</b>	
I.D.	Inside Diameter
<b>M</b>	
mm	Millimeter
<b>N</b>	
No.	Number
NPT	National Pipe Taper (thread)
<b>O</b>	
O.D.	Outside Diameter
<b>P</b>	
P/N	Part Number
psi	Pounds per square inch
RT	Roller Tappet

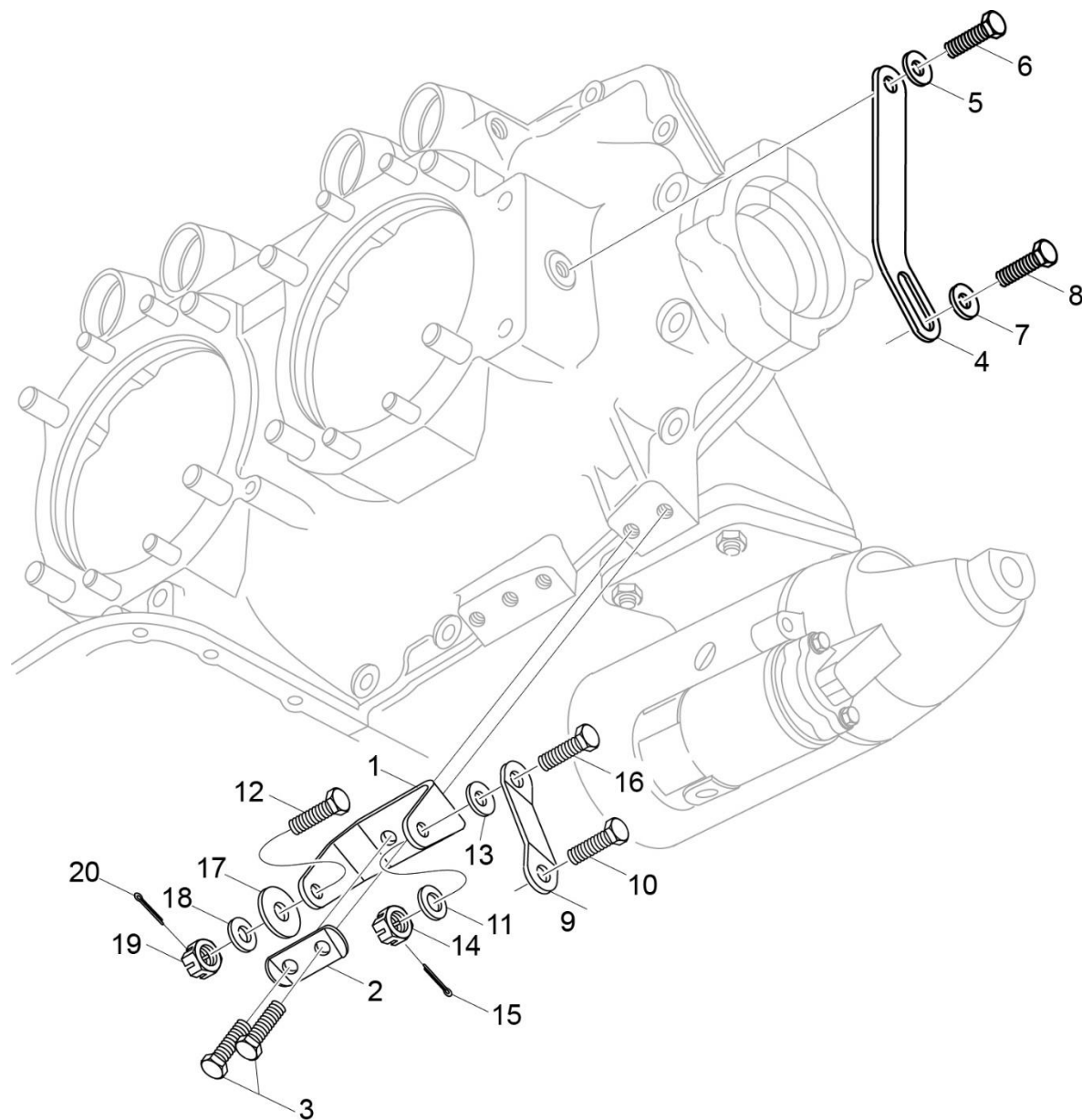
This page intentionally left blank.

## OVERSIZE AND UNDERSIZE PARTS LISTING

PART NO.	DESCRIPTION	OVERSIZE (IN.)					OVERSIZE (IN.)	
		P05 .005	P10 .010	P15 .020	P20 .030	P50 .050	M03 .003	M06 .006
18A26093	BEARING, Crankshaft Front						X	X
18D26098	BEARING, Crankshaft						X	X
18M26105	BEARING, Connecting Rod						X	X
72155-S	BUSHING, Prop Flange Short	X						
75656-S	BUSHING, Prop Flange Long	X						
75657-S	BUSHING, Prop Flange Index	X						
74637	BUSHING, Rocker Shaft	X						
69796	DOWEL, Crankshaft		X					
STD-1065	DOWEL, Crankshaft		X					
76943	GUIDE, Intake Valve				X			
16R22126	GUIDE, Exhaust Valve				X			
66796	INSERT, Spark Plug		X					
74241	RING, Piston		X					
14H29884	RING, Piston		X					
72057	SEAT, Intake Valve			X				
72058	SEAT, Exhaust Valve			X				
LW-13792	SEAL, Crankshaft Oil					X		

### NOTE

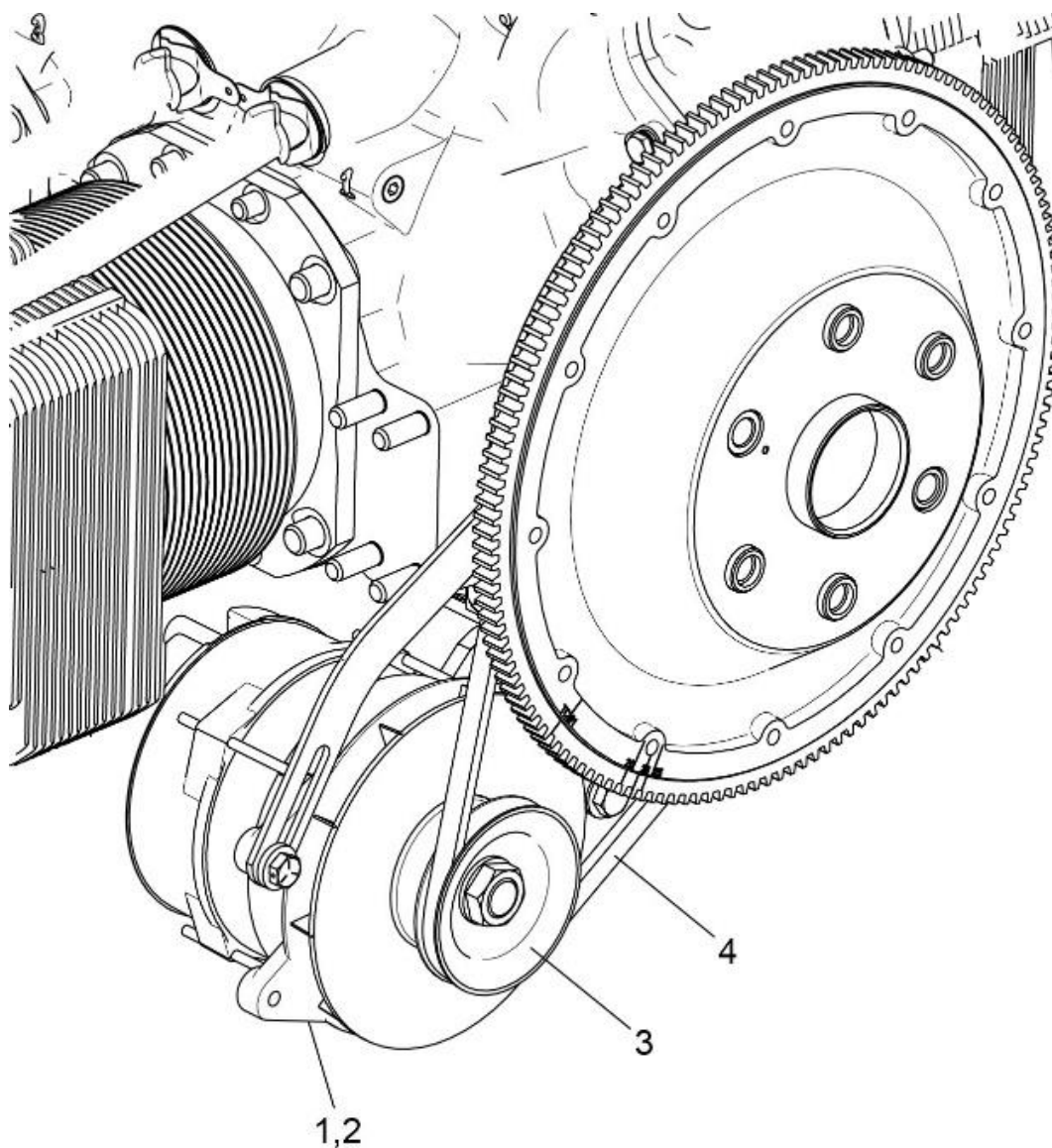
When ordering oversize and undersize parts, be sure to specify the required oversize and undersize dimension with the proper part number. For example, to order bearing P/N 18A26093 in .003 undersize, order P/N 18A26093-M03. Oversize code letter is "P" while undersize code letter is "M". These letters are then followed by the number designating the size in thousandths of an inch.



**Figure 1**  
**Alternator Attaching Parts**

**DC GENERATION****Figure 1 - Alternator Attaching Parts**

<b>Figure Item</b>	<b>Code</b>	<b>Part Number</b>	<b>Description</b>	<b>Units per Assembly</b>
1		07A19474	BRACKET, Alternator	1
2		73383	LOCKPLATE, 5/16 bolt x 1.00 spacing	1
3		LW-31-0.94	BOLT, 5/16-18 x 15/16 long, hex. head.	2
4		75380	LINK, Alternator adjusting	1
5		STD-35	WASHER, 5/16 plain	1
6		LW-31H0.75	BOLT, 5/16-18 x 3/4 long, hex. head.	1
7		STD-1727	WASHER, Plain, 3/4 O.D. x 11/32 I.D. x 1/8 thick	1
8		LW-31H0.75	BOLT, 5/16-18 x 3/4 long, hex. head.	1
9		07F23268	STRUT, Alternator support	1
10		LW-31H0.75	BOLT, 5/16-18 x 3/4 long, hex. head.	1
11		STD-690	WASHER, 13/16 O.D. x 25/64 I.D. x 1/16 thick	1
12		AN6-17	BOLT, 3/8-24 x 1-61/64 long, hex. head., drilled end	1
13		STD-690	WASHER, 13/16 O.D. x 25/64 I.D. x 1/16 thick	6
14		STD-872	NUT, 3/8-24 slotted	1
15		STD-713	COTTER PIN, 3/32 dia. x 3/4 long	1
16		AN6-16	BOLT, 3/8-24 x 1-53/64 long, hex. head, drilled end	1
17	<b>AR</b>	76534	SHIM, 1-1/8 O.D. x 13/32 I.D. x .005 thick	AR
18		STD-690	WASHER, 13/16 O.D. x 25/64 I.D. x 1/16 thick	1
19		STD-872	NUT, 3/8-24 slotted	1
20		STD-713	COTTER PIN, 3/32 dia. x 3/4 long	1
<b>AR – as Required</b>				

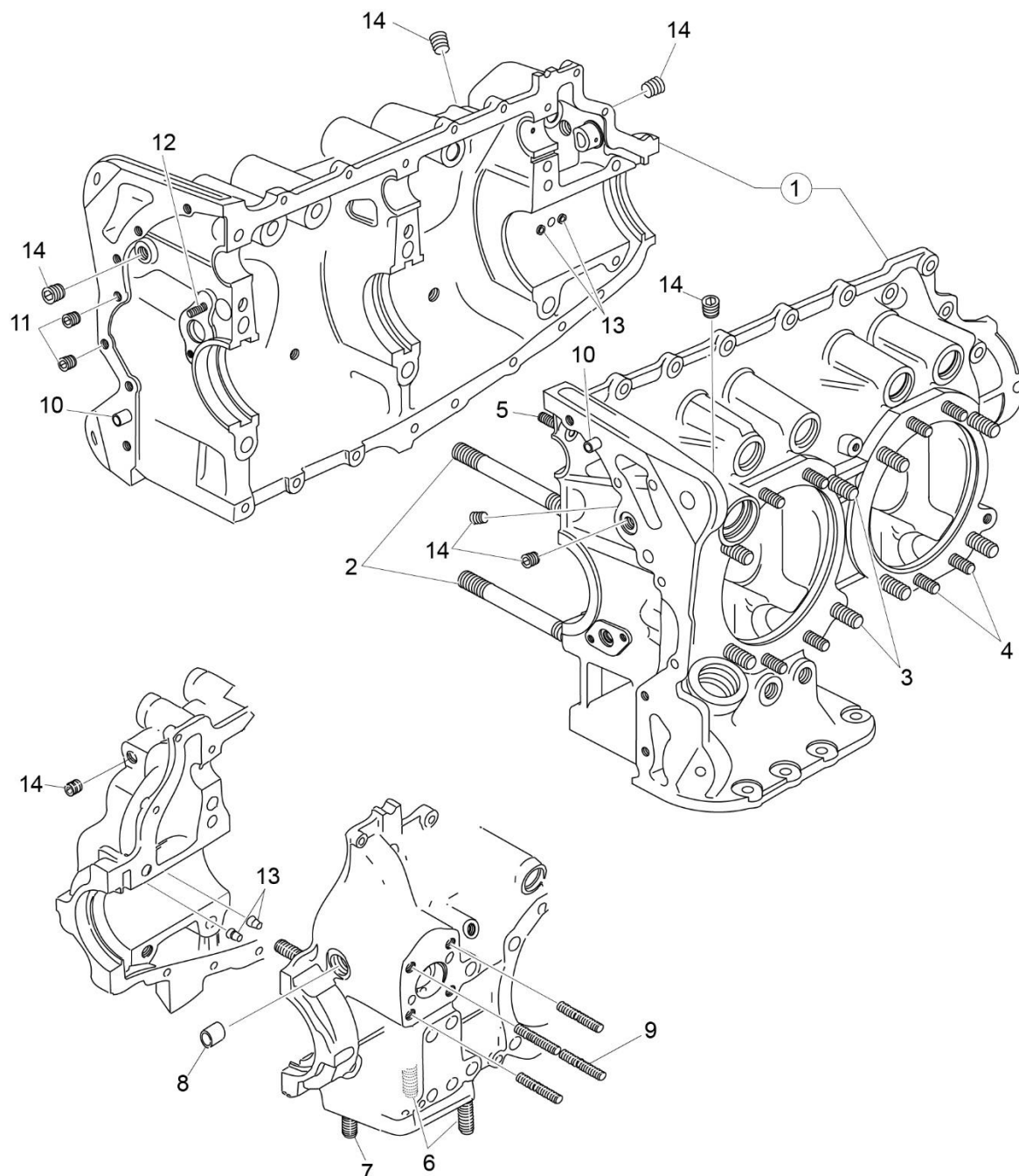


**Figure 2**  
**Alternator Assembly and Belt**



**DC GENERATION****FIGURE 2 - ALTERNATOR ASSEMBLY AND BELT**

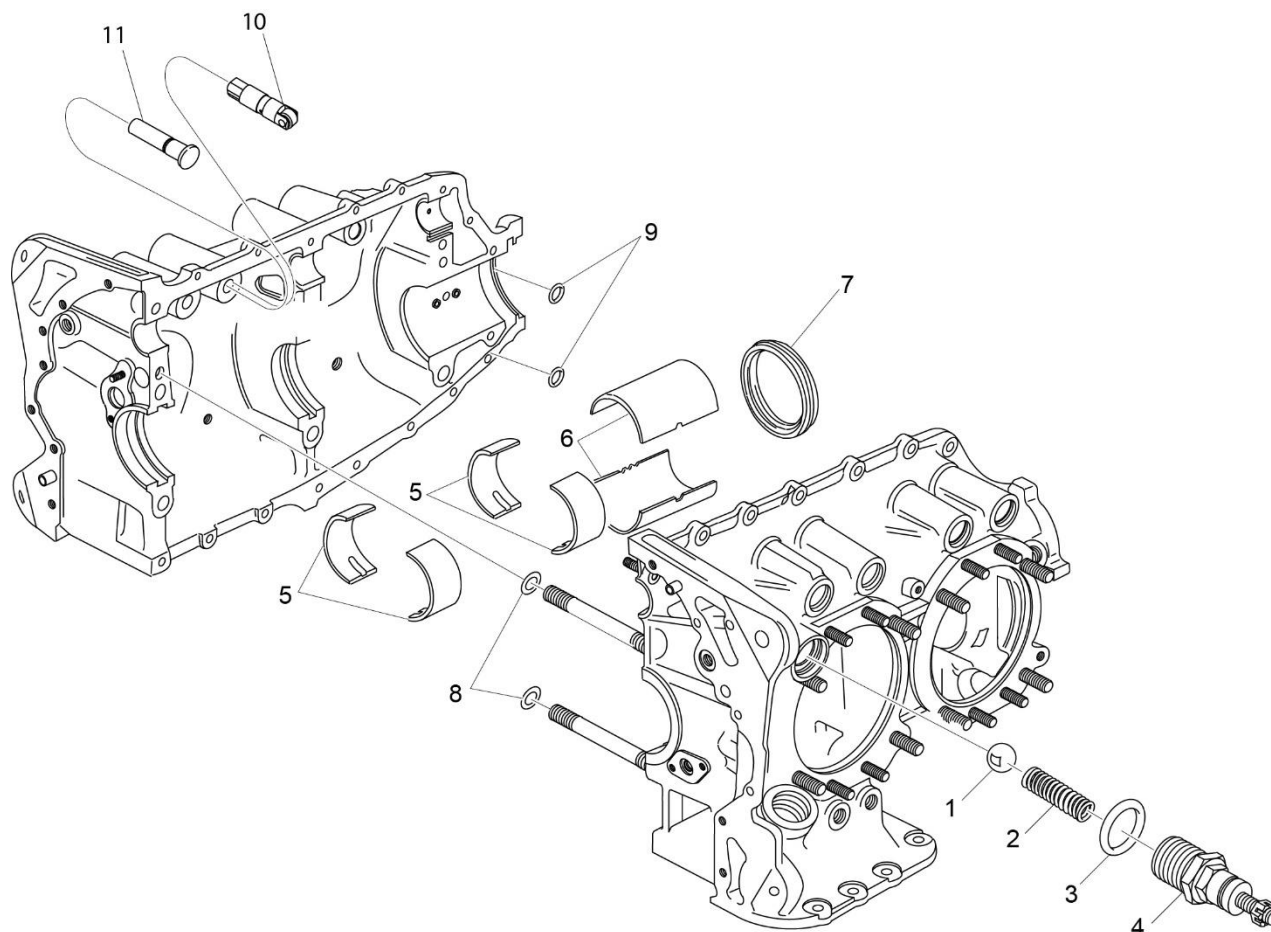
<b>Figure Item</b>	<b>Code</b>	<b>Part Number</b>	<b>Description</b>	<b>Units per Assembly</b>
1		LW-14371	ALTERNATOR ASSY., 12 Volt, 60 Amp	1
		32CI9553	ALTERNATOR ASSY., 24 Volt, 70 Amp.	1
2		LW-14313	ALTERNATOR, ALY-8520 12 Volt, 60 Amp	1
	<b>V</b>	LW-14326	ALTERNATOR, ALU-8521 24 Volt, 70 Amp.	1
3		36819484	PULLEY, Alternator	1
4		37AI9773-376	BELT, Alternator drive, 3/8 wide	1
<b>V</b> Vendor Prime Manufacturer part <b>NOTE:</b> See latest revision of Lycoming Service Instruction No. 1154 for complete listing of FAA approved starters, generators, alternators, regulators and relays.				



**Figure 3**  
**Crankcase Assembly**

**POWER SECTION****Figure 3 - Crankcase Assembly**

Figure Item	Code	Part Number	Description	Units per Assembly
1		11B20061-1SL	CRANKCASE ASSEMBLY	1
		11B20061-1S	CRANKCASE ASSEMBLY	1
2		75154	STUD, 1/2-13 x 10-1/32 long	2
3		50-15	STUD, 1/2-13 x 1-7/8 long	8
4		38-13	STUD, 3/8-16 x 1-5/8 long	16
5		38D-17	STUD, 3/8-16 x 2-1/8 long, drilled	1
6		31C-12	STUD, 5/16-18 x 1-1/2 long	2
7		31C-13	STUD, 5/16-18 x 1-5/8 long	1
8		STD-557	DOWEL, 1/2 diameter x 11/16 long, hollow	2
9		STD-514	DOWEL, 5/16 diameter x 1/2 long	2
10		STD-1623	INSERT, 1/4-20 Heli-coil x 3/8 long	2
11		LW-13793	STUD, 5/16-18 x 15/16 long, drilled	1
12		69796	DOWEL, Crankshaft bearing	2
13		1102	PLUG, 1/8-27 NPT, Allen head	6
14		STD-1339	PLUG, 1/16-27 NPT, Allen head	4



**Figure 4**  
**Crankcase Related Parts**

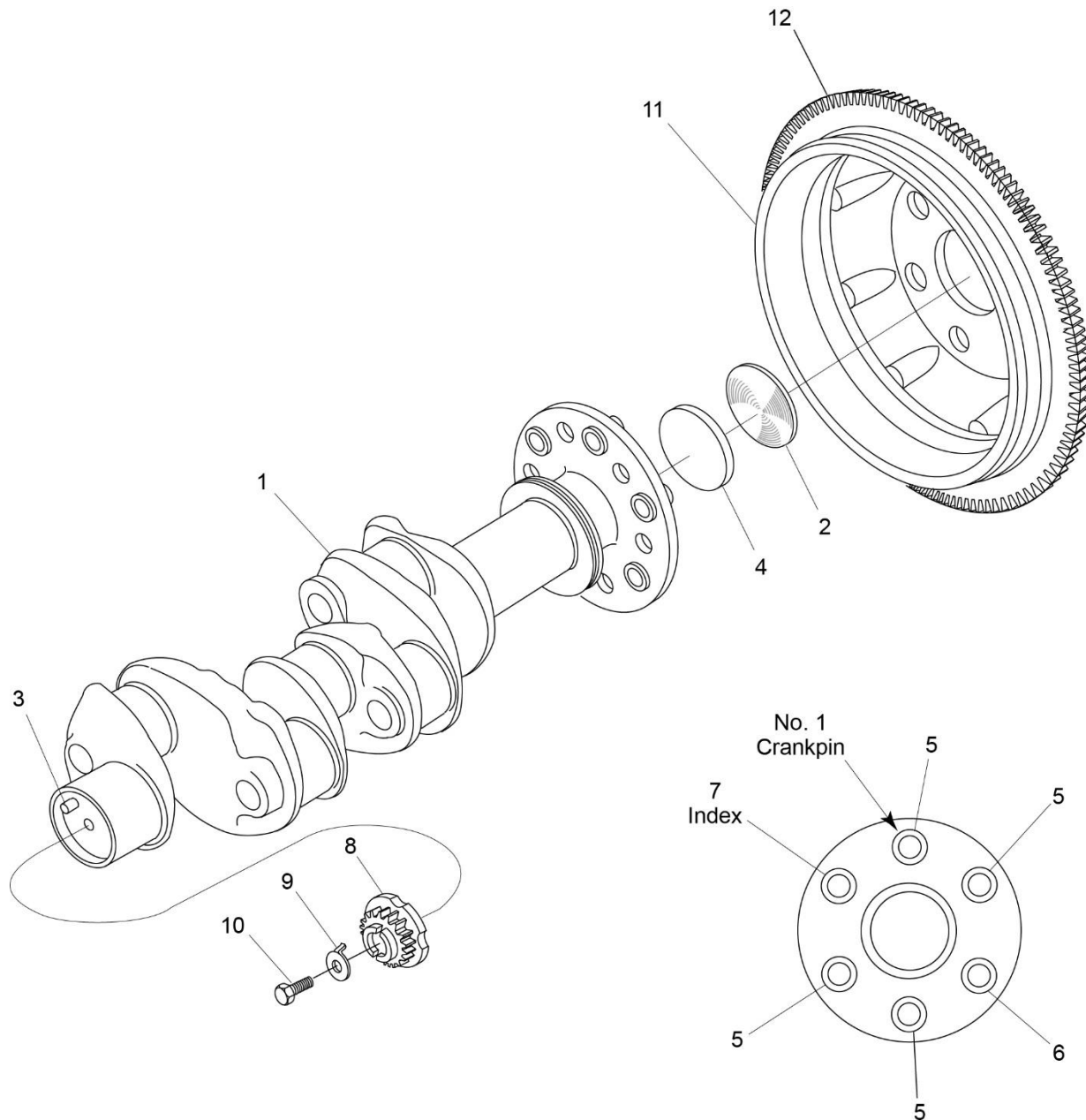
**POWER SECTION****Figure 4 - Crankcase Related Parts**

Figure Item	Code	Part Number	Description	Units per Assembly
1		1028-B	BALL, 11/16 diameter	1
2		61084 *	SPRING, Oil pressure relief valve	AR
		68668 *	SPRING, Oil pressure relief valve	AR
		77467 *	SPRING, Oil pressure relief valve	AR
		LW-11713 *	SPRING, Oil pressure relief valve	AR
		LW-18085 *	SPRING, Oil pressure relief valve	AR
3		06E19769-1.25	GASKET, 1-1/4 I.D. x 1-1/2 O.D. x 3/32 annular	1
4		77808	VALVE ASSY., Oil pressure relief valve, adj.	1
5		18D26098	BEARING, Crankshaft	4
6		18A26093	BEARING, Crankshaft, front	2
7		LW-13792 **	SEAL, Crankshaft oil, solid	1
		LW-11997 **	SEAL, Crankshaft oil, split	1
8		72075	SEAL, Oil, 3/32 section x 7116 1.0.	2
9		72091	RING, Oil seal, 23/64 1.0. x 7/64 diameter	2
10		LRT23381	BODY, Hydraulic tappet, roller type	8
11		15B26262	BODY, Hydraulic tappet, flat type	8

**AR** – as Required

\* Select spring to give a minimum of three threads exposed on adjusting screw to allow field adjustment. Reference See latest revision of Lycoming Table of Limits SSP-1776, Part I for spring identification.

\*\* See latest edition of Lycoming Service Instruction No. 1324 for installation.

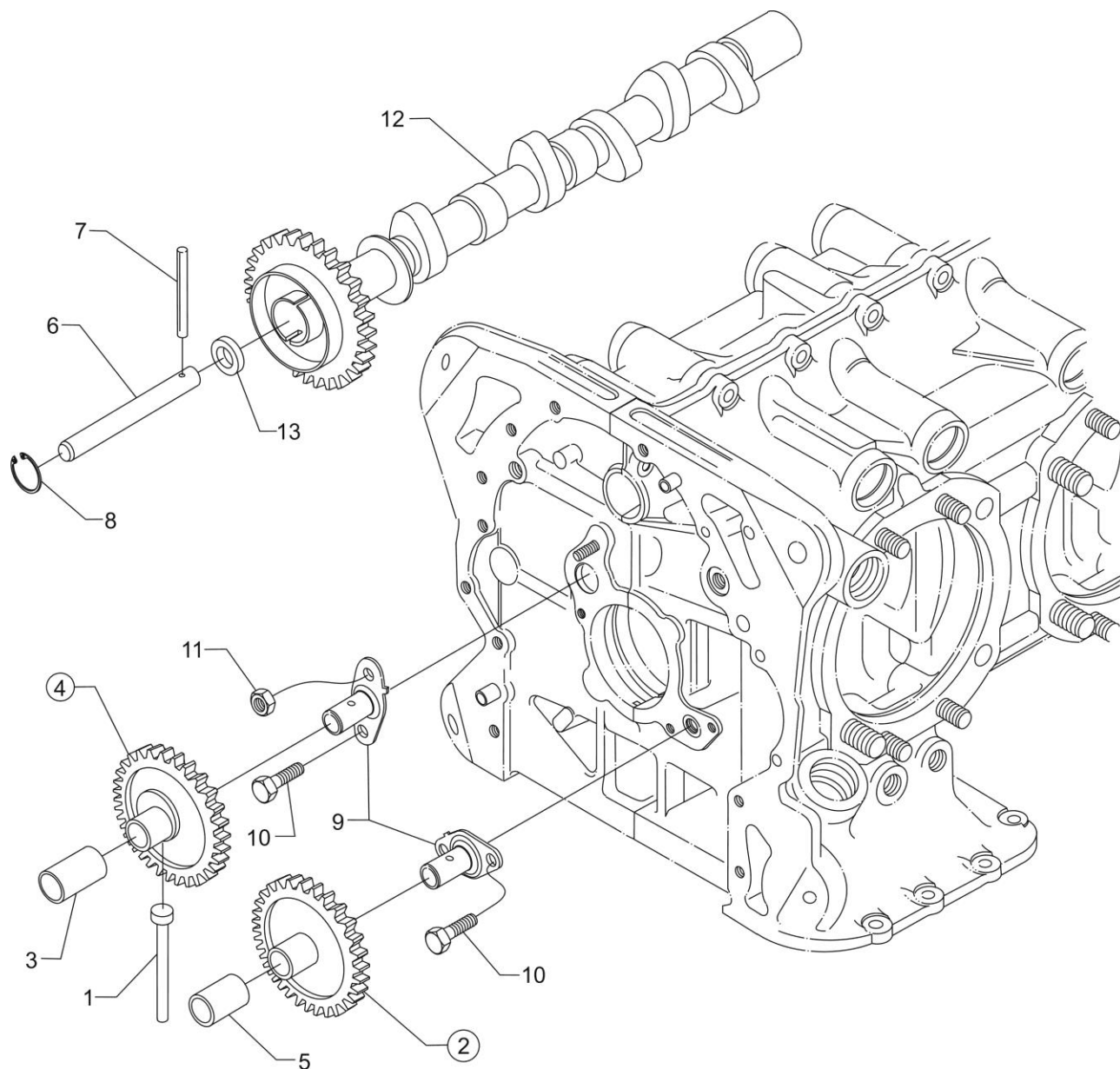


### Figure 5 Crankshaft Assembly and Related Parts

**POWER SECTION****Figure 5 - Crankshaft Assembly and Related Parts**

Figure Item	Code	Part Number	Description	Units per Assembly
1		13B47120	CRANKSHAFT ASSEMBLY	1
2		STD-1211	PLUG, 2.00 dia. expansion	1
3		STD-1065	DOWEL, Stepped, 5/16 & 1/4 dia. x 35/64 long	1
4		61510	PLUG, 1-3/4 O.D.	1
5	*	75656-S	BUSHING, Prop. flange, long	4
6	*	72155-S	BUSHING, Prop. flange, short	1
7	*	75657-S	BUSHING, Prop. flange, indexing	1
8		13S19646 *	GEAR, Crankshaft	1
9		LW-18639	LOCKPLATE, Crankshaft gear	1
10		STD-2246	BOLT, 5/16-24 x 1.00 long	1
11		LW-16471	SUPPORT ASSY., Starter ring gear	1
12		72566	GEAR, Starter ring, 12/14 pitch	1

\* Refer to the latest revision of Lycoming Engines Service Instruction No. 1098 for additional details.

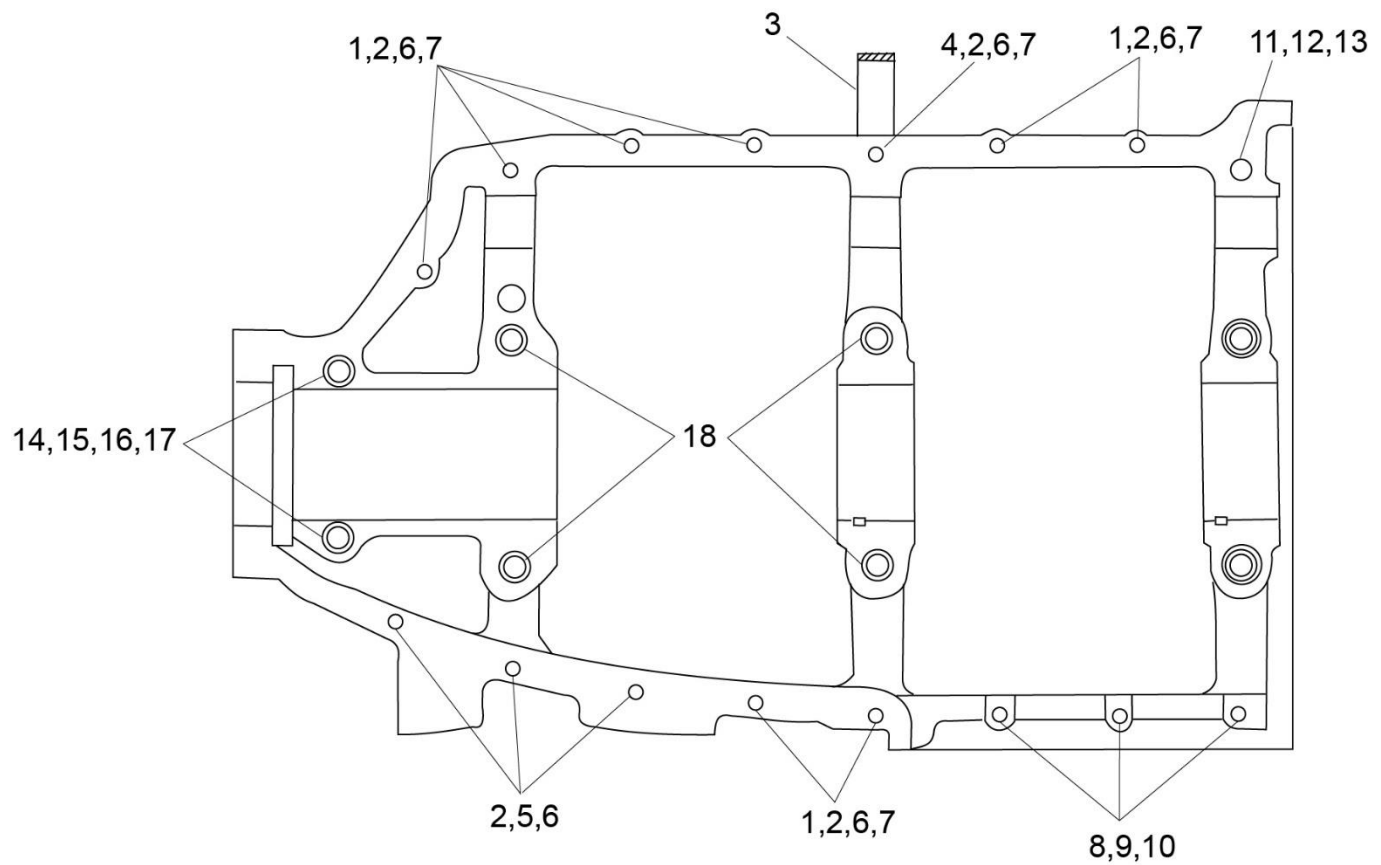


**Figure 6**  
**Crankshaft Idler Gears, Tachometer Drive and Camshaft**



**POWER SECTION****Figure 6 - Crankshaft Idler Gears, Tachometer Drive and Camshaft**

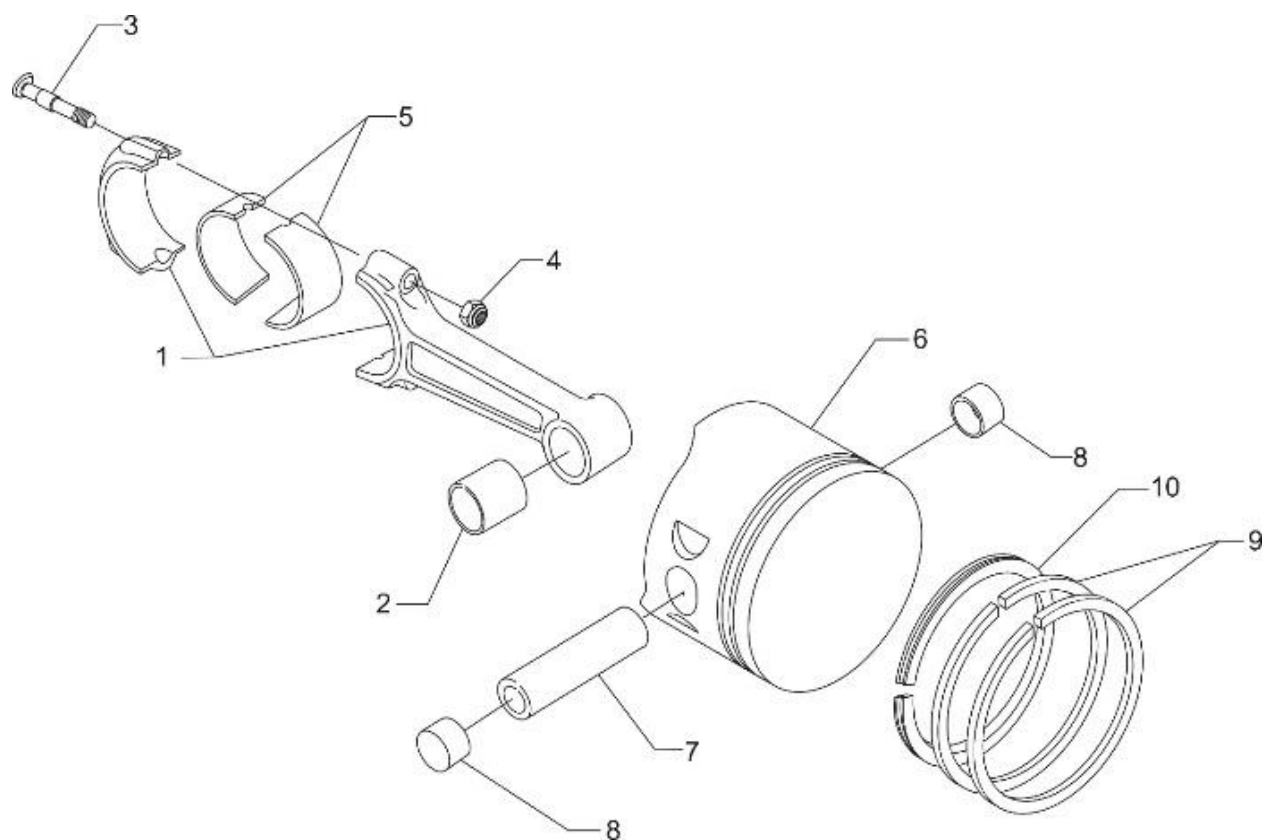
Figure Item	Code	Part Number	Description	Units per Assembly
1		23D26777	PLUNGER, Fuel pump, long	1
2		74996	GEAR ASSEMBLY, Crankshaft idler, plain	1
3		77309	BUSHING, Crankshaft idler gear	1
4		75072	GEAR ASSEMBLY, Crankshaft idler	1
5		77309	BUSHING, Crankshaft idler gear	1
6		76121	SHAFT ASSEMBLY, Tachometer	1
7		LW-18667	PIN, 3/16 diameter x 2-21/64 long	1
8		STD-2231	RING, Internal retaining	1
9		LW-13796	SHAFT, Crankshaft idler gear	2
10		LW-31H0.88	BOLT, 5/16-18 x 7/8 long, hex. head, drilled	3
11		STD-2168	NUT, 5/16-18 NC-3 slotted shear	1
12		15M23452	CAMSHAFT ASSEMBLY, Roller lifter	1
		15M23451	CAMSHAFT, Roller Lifter	1
12		LW-18840	CAMSHAFT ASSEMBLY, Flat tappet	1
		LW-11754	CAMSHAFT, Flat tappet	1
13		76118	SPACER, Tachometer shaft centering	1



**Figure 7**  
**Crankcase Attaching Parts**

**POWER SECTION****Figure 7 - Crankcase Attaching Parts**

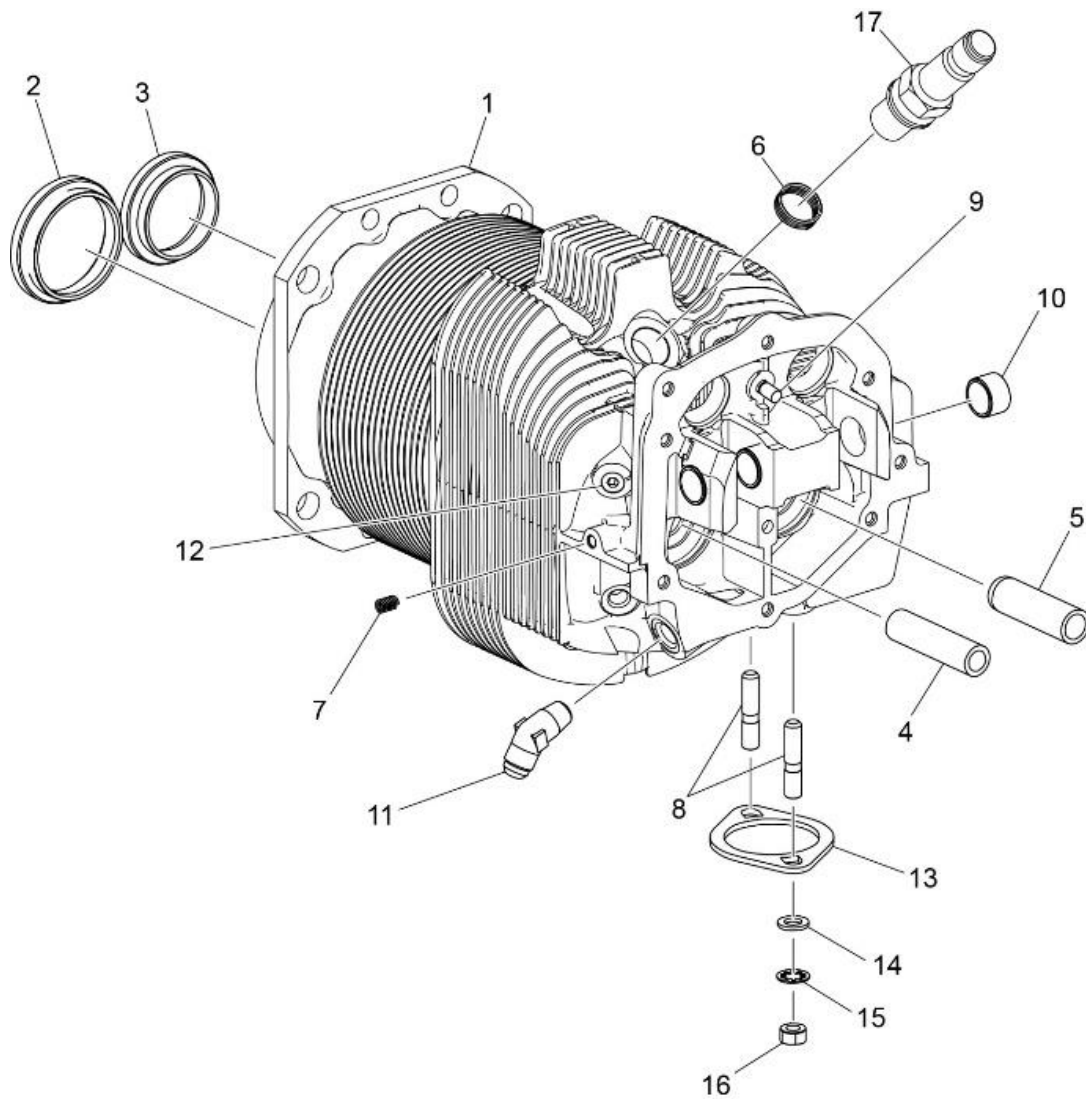
<b>Figure Item</b>	<b>Code</b>	<b>Part Number</b>	<b>Description</b>	<b>Units per Assembly</b>
1		LW-25-1.50	BOLT, 1/4-20 x 1-1/2 long, hex. head	8
2		STD-8	WASHER, 1/4 plain	19
3		60803	STRAP, Lifting	1
4		LW-25-1.75	BOLT, 1/4-20 x 1-3/4 long, hex. head	1
5		LW-25-1.13	BOLT, 1/4-20 x 1-1/8 long, hex. head	3
6		STD-160	WASHER, 1/4 lock, internal teeth	12
7		STD-1411	NUT, 1/4-20 plain	9
8		LW-25SI.50	BOLT, 1/4-20 x 1-1/2 long, hex. head., dr. end	3
9		STD-8	WASHER, 1/4 plain (max. 9)	9
10		STD-2249	NUT, 1/4-20 slotted shear	3
11		STD-33	WASHER, 3/8 plain, 1/16 thick	3
12		NAS1149F0632P	WASHER, 3/8 plain, 1/32 thick	1
13		STD-872	NUT, 3/8-24 slotted	1
14		AN6-34A	BOLT, 3/8-24 x 3-37/64 long, hex. head	2
15		STD-33	WASHER, 3/8 plain	4
16		STD-678	WASHER, 3/8 lock, internal teeth	2
17		STD-596	NUT, 3/8-24 plain	2
18		76220	STUD, 1/2-20 x 10-45/64 long	4



**Figure 8**  
**Connecting Rods, Pistons and Ring Assemblies**

**CYLINDER SECTION****Figure 8 - Connecting Rods, Pistons and Ring Assemblies**

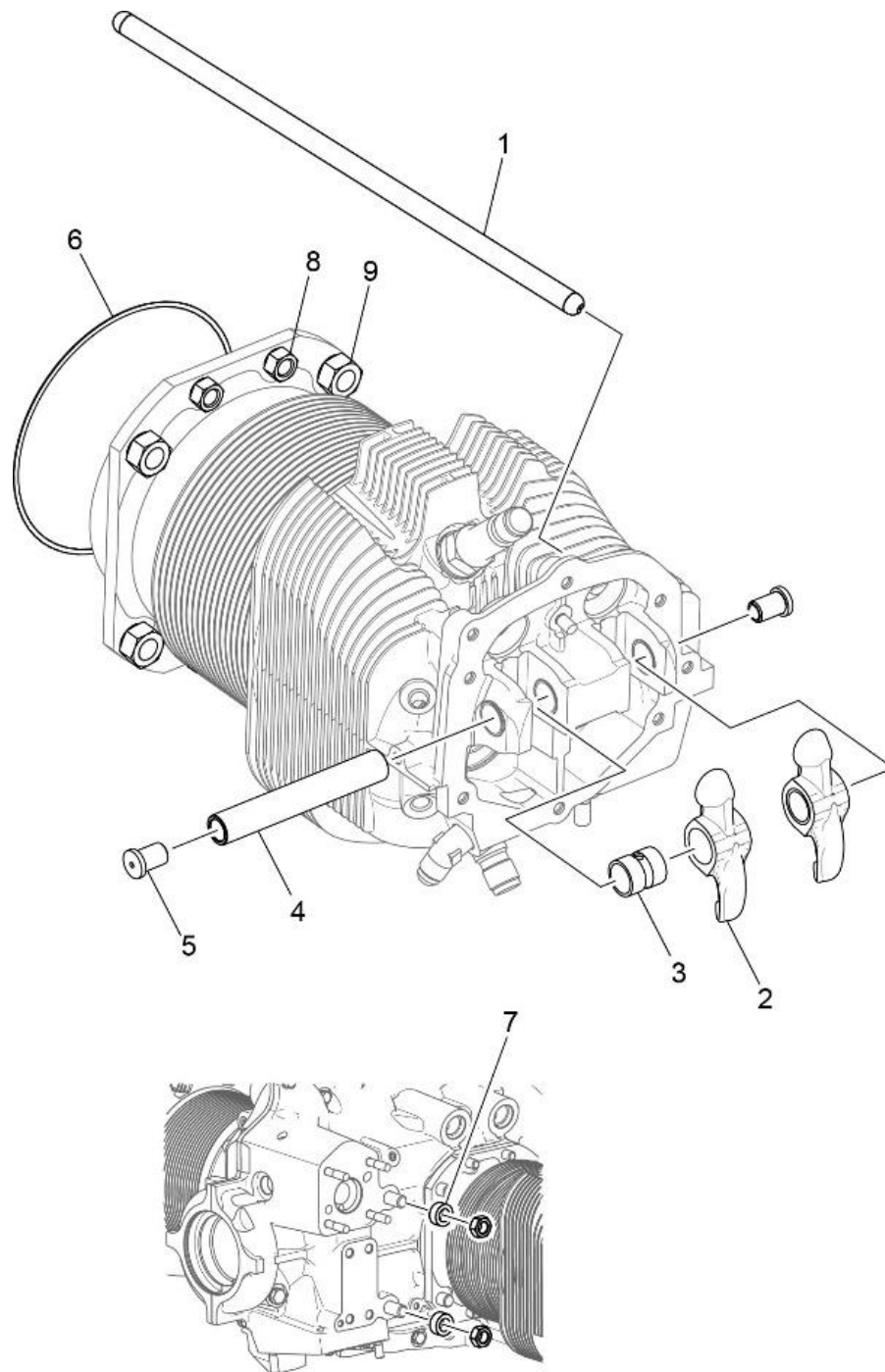
<b>Figure Item</b>	<b>Code</b>	<b>Part Number</b>	<b>Description</b>	<b>Units per Assembly</b>
1		LW-11750	CONNECTING ROD ASSEMBLY	4
2		01K28983	BUSHING, Connecting rod, upper	4
3		14S23890	BOLT, Connecting rod	8
		75061	BOLT, Connecting rod	8
4		LW-12186	NUT, Connecting rod bolt	8
5		18M26105	BEARING, Connecting rod	8
6		14D23912	PISTON, Compression ratio, 8.50:1	4
7	❖	LW-14078	PIN, Piston	4
8	❖	72198	PLUG, Piston pin	8
9		74241	RING, Piston compression	8
10		14H29884	RING, Piston, oil regulating, expander type	4
❖ Refer to the latest revision of Lycoming Service Instruction No. 1267.				



**Figure 9**  
**Cylinder Assembly**

**CYLINDER SECTION****Figure 9 - Cylinder Assembly**

Figure Item	Code	Part Number	Description	Units per Assembly
1		16A30080-01	CYLINDER ASSEMBLY	4
2		72057	SEAT, Intake valve	4
3		72058	SEAT, Exhaust valve	4
4	❖	76943	GUIDE, Valve, intake	4
5	❖	16R22126	GUIDE, Valve, exhaust	4
6		66796	INSERT, Spark Plug, 18-1.5 MM	4
7		STD-1353	INSERT, No. 10-24 Heli-coil x 3/8 long	4
8		31C-12	STUD, 5/16-18 x 1-1/2 long	8
9		25C-8	STUD, 1/4-20 x 1.00 long	4
10		66610	BUSHING, Rocker shaft	16
11		MS20823-6D	ELBOW, 45°, 3/8 flared tube	4
12	●	1102	PLUG, 1/8-27 NPT, Allen head	4
13		77611	GASKET, Exhaust flange	4
14		STD-35	WASHER, 5/16, plain	8
15		STD-475	WASHER, 5/16 lock, internal teeth	8
16		STD-1410	NUT, 5/16-18 plain	8
17	▲	1182-E7	SPARK PLUG	8
❖ Refer to the latest revision of Lycoming Service Instruction No. 1256 for service valve guides. ▲ Refer to the latest revision of Lycoming Service Instruction No. 1042 for complete listing of all approved spark plugs. ● Used on installations without injector or priming lines				



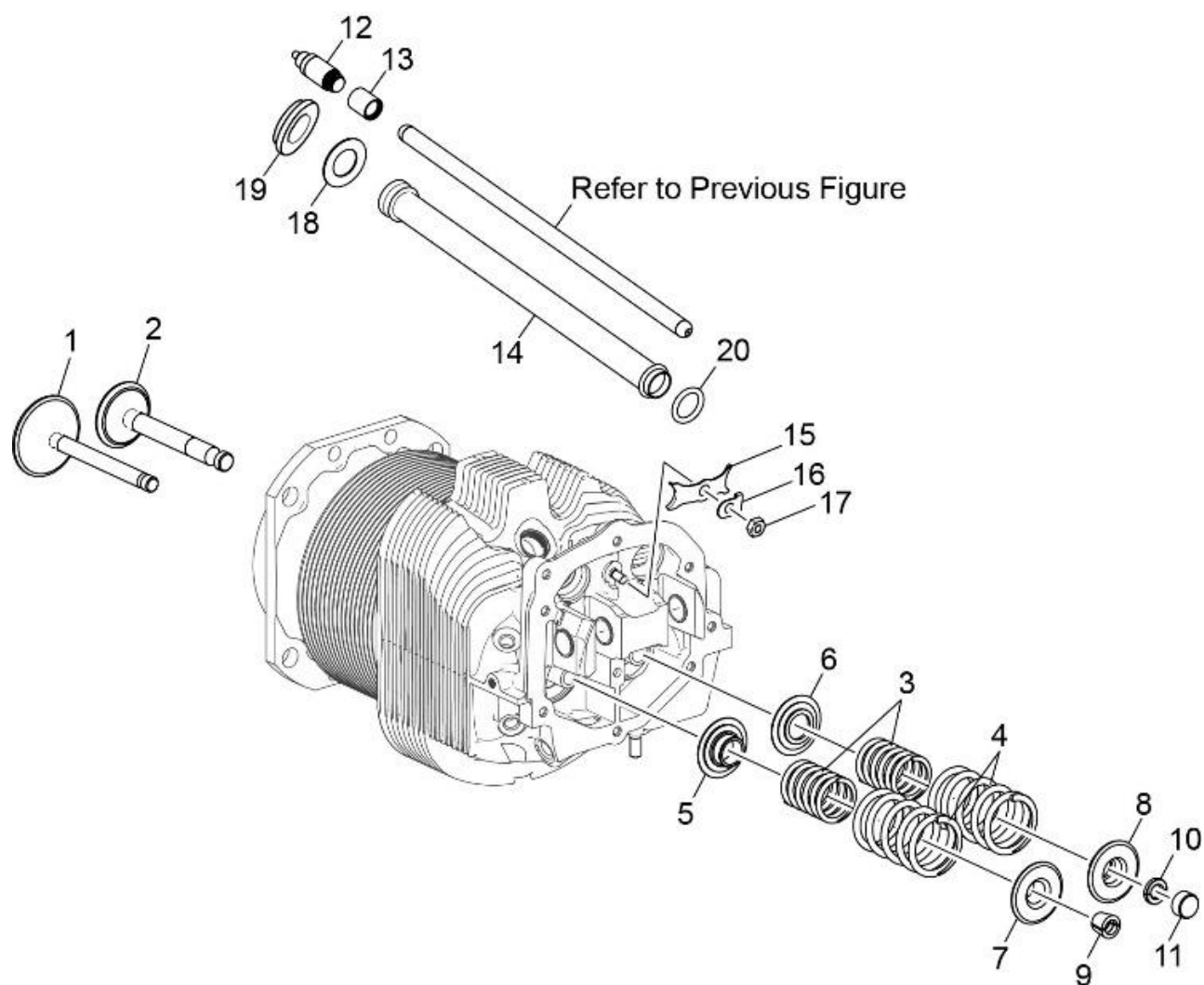
**Figure 10**  
**Cylinder Related Parts**



## CYLINDER SECTION

**Figure 10 - Cylinder Related Parts**

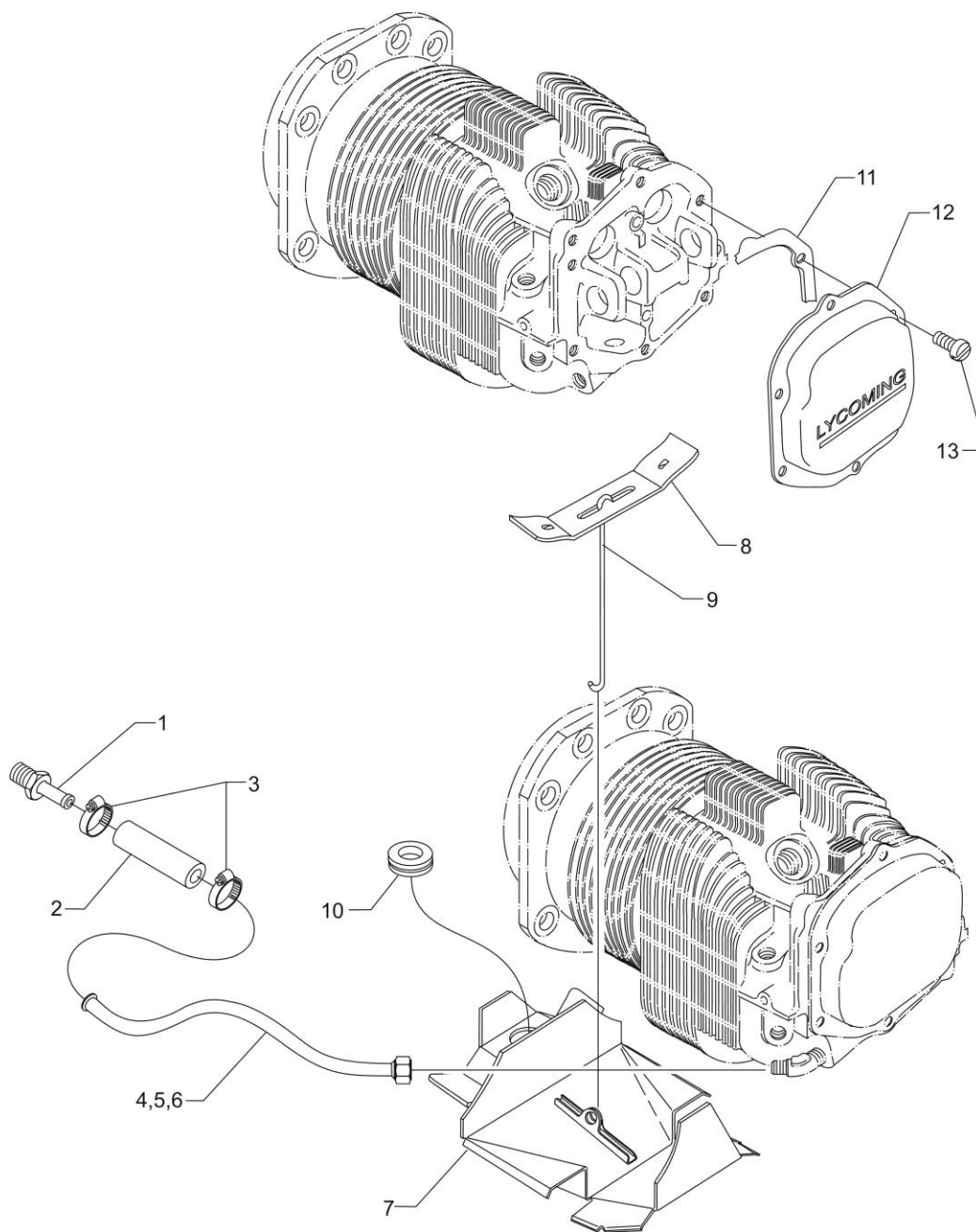
Figure Item	Code	Part Number	Description	Units per Assembly
1	❖	15F28835-28	ROD ASSEMBLY, Push (RT)	AR
	❖	15F28835-29	ROD ASSEMBLY, Push (RT)	AR
	❖	15F28835-30	ROD ASSEMBLY, Push (RT)	AR
	❖	15F28835-31	ROD ASSEMBLY, Push (RT)	AR
	❖	15F28835-32	ROD ASSEMBLY, Push (RT)	AR
	❖	15F28835-33	ROD ASSEMBLY, Push (RT)	AR
	❖	15F28835-34	ROD ASSEMBLY, Push (RT)/(FT)	AR
	❖	15F28835-35	ROD ASSEMBLY, Push (FT)	AR
	❖	15F28835-36	ROD ASSEMBLY, Push (FT)	AR
	❖	15F28835-37	ROD ASSEMBLY, Push (FT)	AR
2	▲	17F19357	ROCKER ASSEMBLY, Valve	8
3		74637	BUSHING, Valve rocker	8
4		LW-13790	SHAFT, Valve rocker	4
5		LW-12892	THRUST BUTTON, Rocker shaft	8
6		71481	RING, Oil seal, 3/32 dia. x 4-27/32 I.D.	4
7		74887	SPACER, 33/64 I.D. x 7/8 O.D. x 3/8 thick	2
8		383-B	NUT, 3/8-24 plain	16
9		STD-2090	NUT, 1/2-20 plain	18
<b>AR</b> as required ❖ Refer to the latest revision of Service Instruction No. 1060 for push rod application. ▲ Due to the size of the area where the part number is stamped, the last five digits may be all that is shown (19957). <b>NOTE:</b> Various push rod lengths are used to set valve clearances. (RT) = roller tappet, (FT) = flat tappet				



**Figure 11**  
**Valve Assembly and Related Parts**

**CYLINDER SECTION****Figure 11 – Valve Assembly and Related Parts**

<b>Figure Item</b>	<b>Code</b>	<b>Part Number</b>	<b>Description</b>	<b>Units per Assembly</b>
1		17A23938	VALVE, Intake	4
2		17B23936	VALVE, Exhaust	4
3		17D29055	SPRING, Valve, inner	8
4		17D29060	SPRING, Valve, outer	8
5		65441	SEAT, Valve spring, lower intake	4
6		LW-13323	SEAT, Valve spring, lower exhaust	4
7		LW-10077	SEAT, Valve spring, upper intake	4
8		LW-16475	SEAT, Valve spring, upper exhaust	4
9		60009	KEY, Valve intake	8
10		17C21191	KEY, Valve exhaust	8
11		17C19386	CAP, Valve stem, exhaust	4
12		15B26066	PLUNGER ASSEMBLY, Hydraulic tappet	8
13		15B21319	SOCKET, Hydraulic tappet	8
14		15G23461	SHROUD TUBE ASSEMBLY, Push rod	8
15		LW-14995	SPRING, Shroud tube	4
16		LW-12272	LOCKPLATE, Shroud tube	4
17		STD-1411	NUT, 1/4-20 plain	4
18		01L23459	WASHER, 25/32 I.D. x 1-3/8 O.D. x 1/32 thick	8
19		06A23493	SEAL, Shroud tube	8
20		70310	SEAL, Shroud tube	8

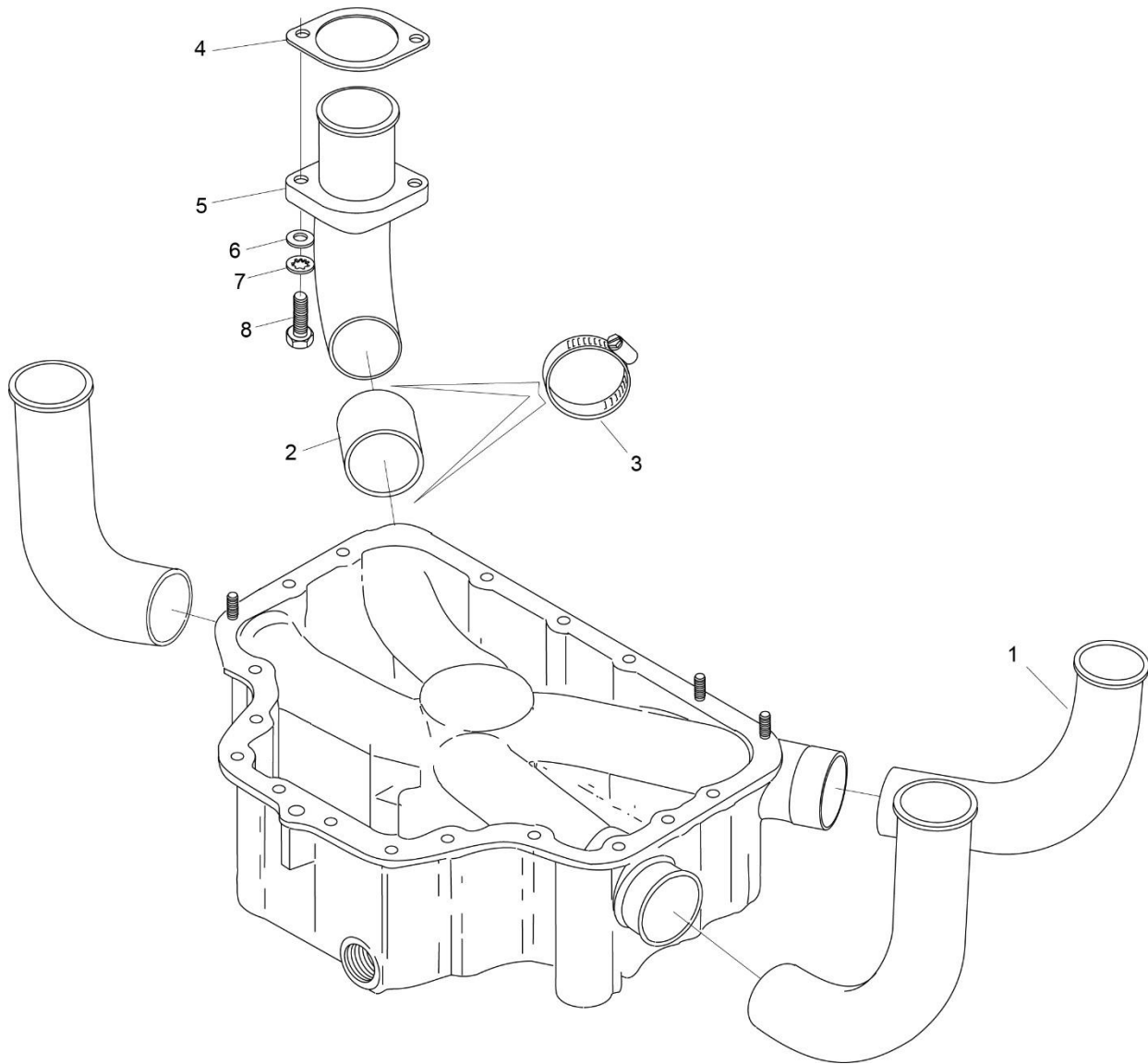


**Figure 12**  
**Cylinder Head Drain Tubes, Intercylinder Cooling Baffles,**  
**and Rocker Box Covers**

**CYLINDER SECTION**

**Figure 12 - Cylinder Head Drain Tubes, Intercylinder Cooling Baffles,  
and Rocker Box Covers**

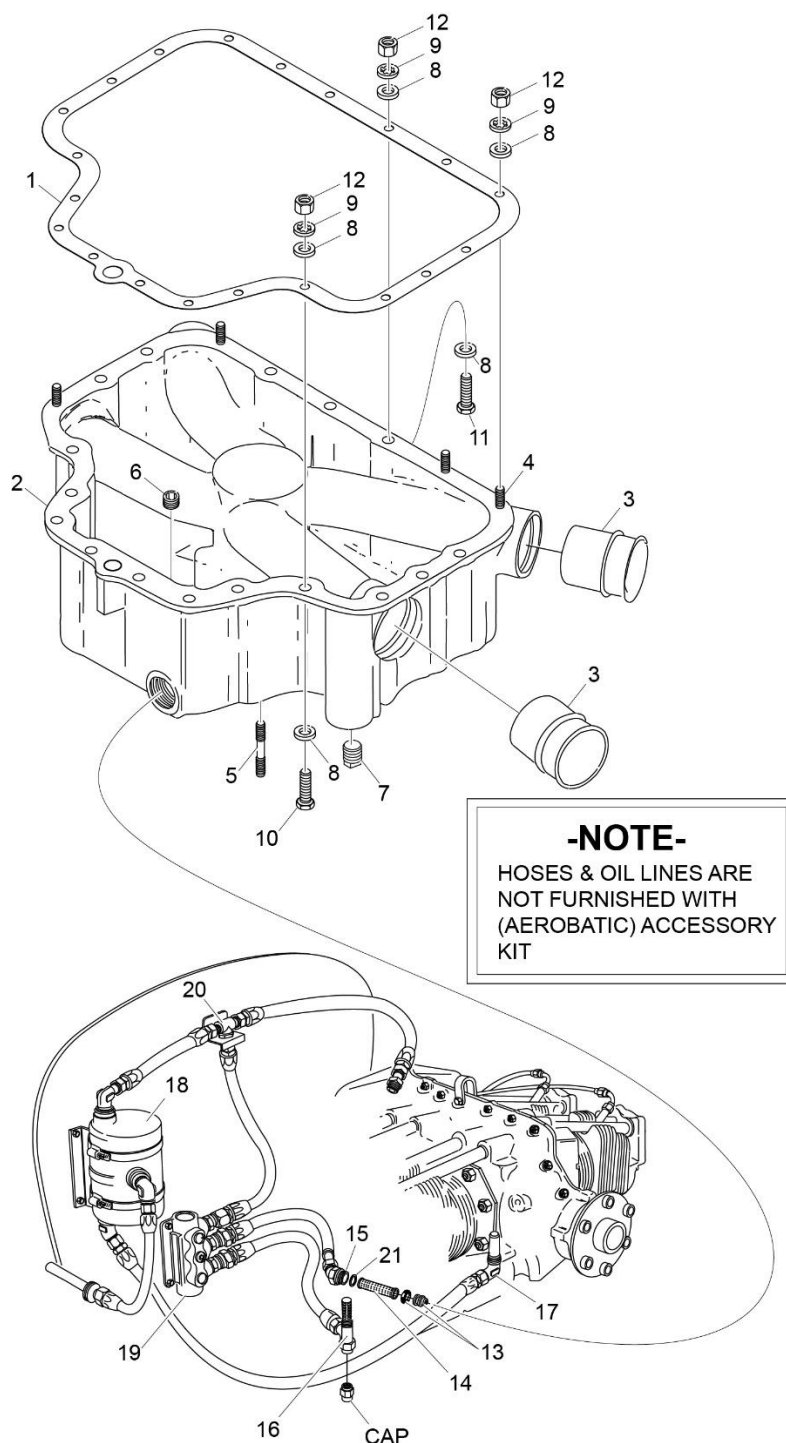
<b>Figure Item</b>	<b>Code</b>	<b>Part Number</b>	<b>Description</b>	<b>Units per Assembly</b>
1		STD-684	NIPPLE, Straight, 3/8 I.D. hose	4
2		STD-1821	HOSE, 3/8 x 2-1/2 long	4
3		LW-15592-5-04	CLAMP, Hose	8
4		68759	TUBE ASSEMBLY, Cylinder head oil drain, cyl. no. 1	1
5		68760	TUBE ASSEMBLY, Cylinder head oil drain, cyl. no. 2	1
6		68761	TUBE ASSEMBLY, Cylinder head oil drain, cyl. no. 3 & 4	2
7	*	75339	BAFFLE ASSEMBLY, Intercylinder	2
	**	LW-13389	BAFFLE ASSEMBLY, Intercylinder	1
8		71611	RETAINER, Intercylinder baffle	2
9		71610	HOOK, Intercylinder baffle retainer	2
10	**	MS35489-20X	GROMMET (on baffle)	1
11		06B26669	GASKET, Rocker box cover (Silicone)	4
12		61247	COVER, Rocker box	4
13		STD-1925	SCREW, 1/4-20 x 5/8 long, pan. head, self-locking	24
* Install on left side between no. 2 and no. 4 cylinders. ** Install on right side between no. 1 and no. 3 cylinders.				



**Figure 13**  
**Intake Pipes Assembly**

**CYLINDER SECTION****Figure 13 – Intake Pipes Assembly**

Figure Item	Code	Part Number	Description	Units per Assembly
1		70485	PIPE, Intake	4
2		69603	HOSE, 1-3/4 I.D. x 2-3/16 O.D. x 1-3/4 long	4
3		LW-15592-8-28	CLAMP,Hose	8
4		71973	GASKET, two bolt flange, 1-3/4 I.D.	4
5		73346	FLANGE, Intake pipe upper	4
6		STD-8	WASHER, 1/4 plain	8
7		STD-160	WASHER, 1/4 lock,internal teeth	8
9		LW-25-1.25	BOLT, 1/4-20 x 1-1/4 long, hex. head.	8

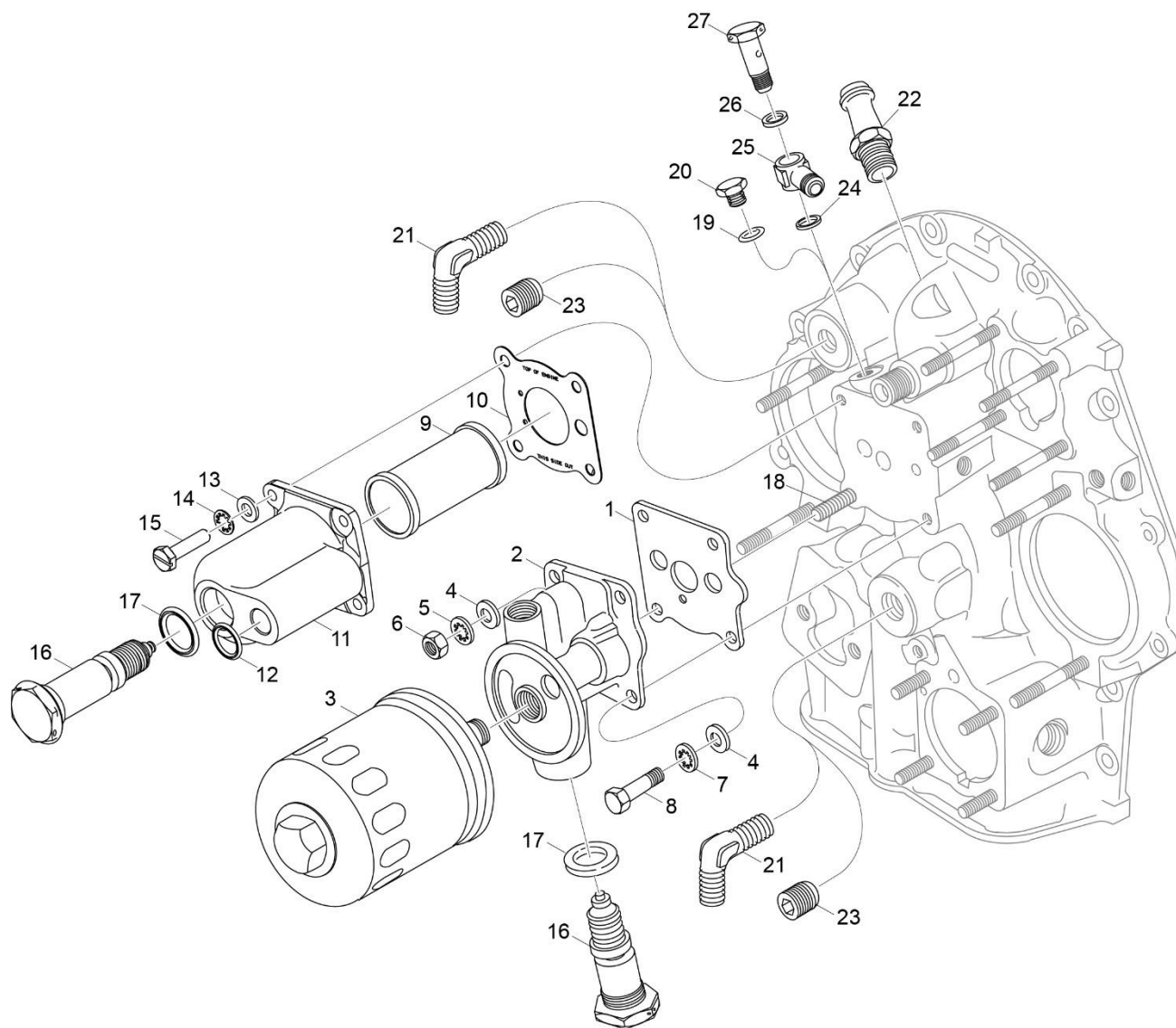


**Figure 14**  
**Oil Sump Assembly, Oil Suction Screen, and Inverted Oil System**



**LUBRICATION SYSTEM****Figure 14 – Oil Sump and Induction Housing Assembly**

Figure Item	Code	Part Number	Description	Units per Assembly
1		LW-13353	GASKET, Oil sump	1
2		LW-13861	SUMP ASSEMBLY, Oil	1
		LW-13860	SUMP, Oil	1
3		78914	CONNECTION, Intake pipe	4
4		25C-10	STUD, 1/4-20 x 1-1/4 long	4
5		3IC-17	STUD, 5/16-18 x 2-1/8 long	4
6		STD-91	PLUG, 1/2-14 NPT, (socket)	1
7		STD-551	PLUG, 1/2-14 NPT, Square head drilled	4
8		STD-8	WASHER, 1/4 plain	28
9		STD-160	WASHER, 1/4 lock, internal teeth	20
10		LW-25-0.94	BOLT, 1/4-20 x 15/16 long, hex. head	14
11		LW-25-1.13	BOLT, 1/4-20 x J-J/81ong, hex. head	2
12		STD-1411	NUT, 1/4-20 plain	12
13		LW-13752	PLUG, Sump	1
14		LW-13888	SCREEN, Oil suction	1
15		LW-13751	FITTING, Sump, oil suction	1
16		LW-13753	FITTING, Sump, oil strainer	1
17		LW-13754	FITTING, Sump, oil return	1
18		57A21009	OIL SEPARATOR	1
19		57B19829	OIL VALVE	1
20		LW-13755	BREATHER, Tee	1
21		MS35769-21	GASKET, Copper encased	1

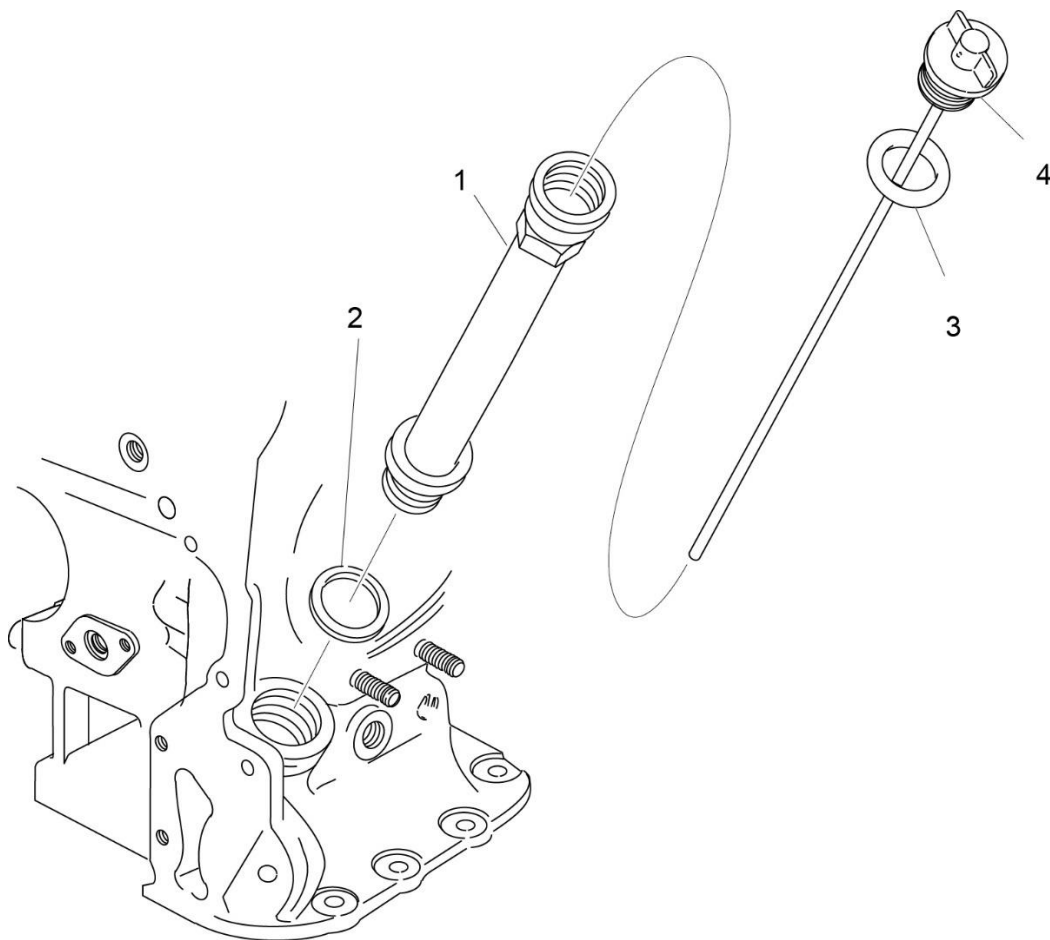


**Figure 15**

**Oil Filter Assembly, Oil Cooler Bypass Valve, and Fittings  
LUBRICATION SYSTEM**

**Figure 15 – Oil Filter Assembly, Oil Cooler Bypass Valve, and Fittings**

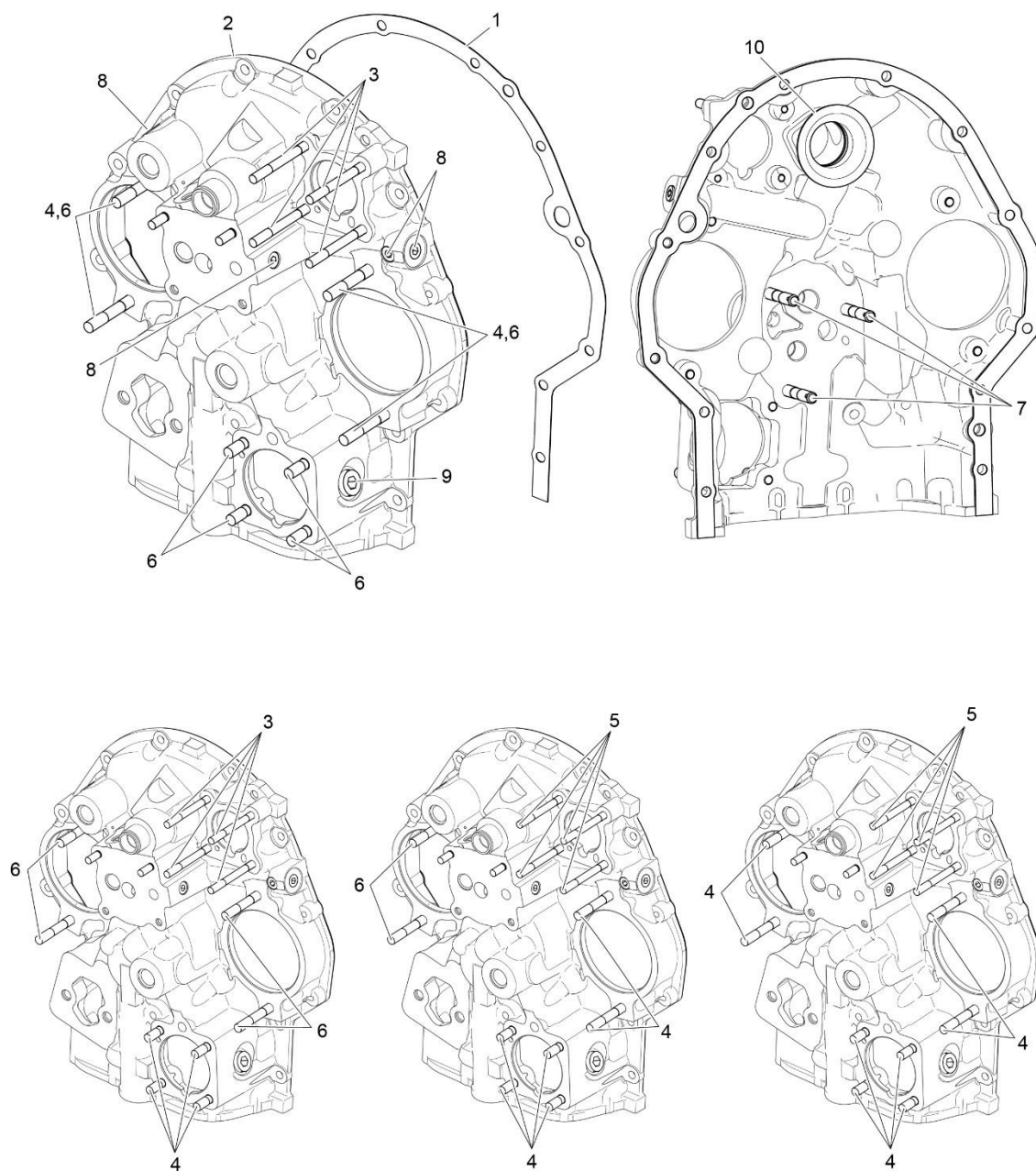
Figure Item	Code	Part Number	Description	Units per Assembly
1		06B23862	GASKET, Oil filter adapter	2
2		77852	OIL FILTER BASE ASSEMBLY	1
3		LW-13215	OIL FILTER, Short, CH48110-1	1
4		STD-8	WASHER, 1/4 plain	4
5		STD-160	WASHER, 1/4 lock, internal teeth	1
6		STD-1411	NUT, 1/4-20 plain	1
7		STD-160	WASHER, 1/4 lock, internal teeth	3
8		LW-25-1.00	BOLT, 1/4-20 x 1.00 long	3
9		62817	SCREEN ASSY., Oil pressure	1
10		61173	GASKET, Oil pressure housing	1
11		69510	HOUSING, Oil pressure screen	1
12		06E19769-0.63	GASKET, Annular, 5/8 I.D.	1
13		STD-8	WASHER, 1/4 plain	4
14		STD-160	WASHER, 1/4 lock, internal teeth	4
15		LW-25-1.00	BOLT, 1/4-20 x 1.00 long	4
16		53E22144	VALVE ASSY., Temp. control oil cooler bypass	1
17		76510	GASKET, Valve assembly	1
18		25C-10	STUD, 1/4-20 x 1-1/4 long	1
19		06E19769-0.63	GASKET, Annular, 5/8 I.D.	1
20		62417	PLUG, Oil cooler bypass	1
21		MS20823-8	ELBOW, 1/2 flared tube, 3/8 NPT, flat tappet	2
22		71140	FITTING, Breather, flat tappet	1
23		STD-784	PLUG, 3/8-18 NPT, Allen head	2
24		71623	WASHER, Oil cooler fitting	1
25		AS5163D08	ELBOW, Universal, 75°	1
26		AN901-8A	GASKET, Metal tube connect seal	1
27		71620	BOLT, 5/8-18 x 1-7/8 long	1



**Figure 16**

**Oil Level Gage  
LUBRICATION SYSTEM****Figure 16 – Oil Level Gage**

<b>Figure Item</b>	<b>Code</b>	<b>Part Number</b>	<b>Description</b>	<b>Units per Assembly</b>
1	**	75736	TUBE, Oil level gage (11-9/16 long)	1
2		72059	GASKET, Oil level gage	1
3	**	74068	RING, Oil level gage plug	1
4		LW-16783-18	GAGE ASSEMBLY, Oil level	1

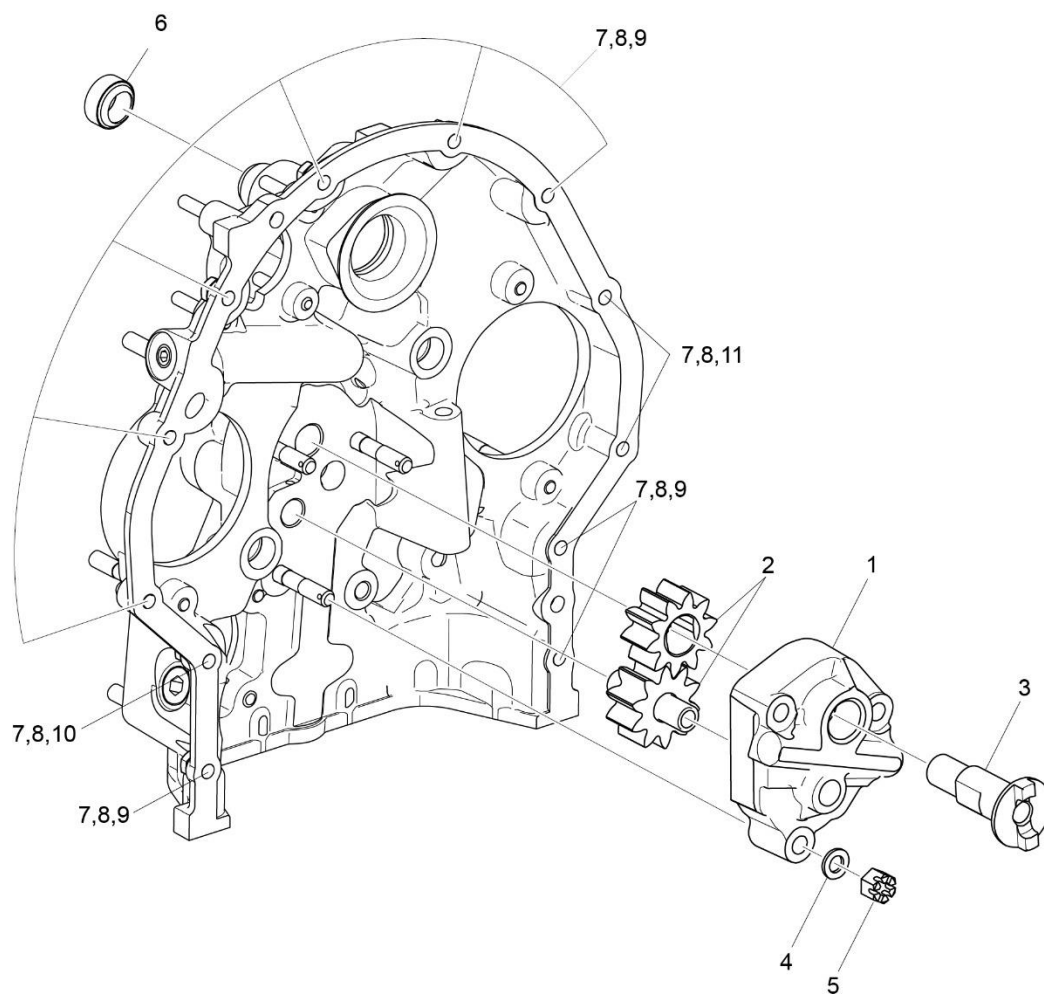


S1656024

**Figure 17**  
**Accessory Housing Assembly**

**ACCESSORY DRIVES****Figure 17 – Accessory Housing Assembly**

<b>Figure Item</b>	<b>Code</b>	<b>Part Number</b>	<b>Description</b>	<b>Units per Assembly</b>
1		73818	GASKET, Accessory housing	1
2		21A21533-04	HOUSING ASSY., Accessory	1
		21A21533-05	HOUSING ASSY., Accessory	1
		21A21533-16	HOUSING ASSY., Accessory	1
		21A21533-26	HOUSING ASSY., Accessory	1
3		25C-22	STUD, 1/4-20 x 2-3/4 long (VAC)	4
4		31C-12	STUD, 5/16-18 x 1-1/2 long (HYD)	4
5		25C-12	STUD, 1/4-20 x 1-1/2 long	4
6		31C-19	STUD, 5/16-18 x 2-3/8 long (MAG) LEFT	4
7		31CD-17	STUD, 5/16-18 x 2-1/8 long, drilled (OIL PUMP)	3
8		1102	PLUG, 1/8-27 NPT, Allen head	4
9		STD-784	PLUG, 3/8-18 NPT, Allen head	1
10		76119	SHIELD, Accessory breather oil	1

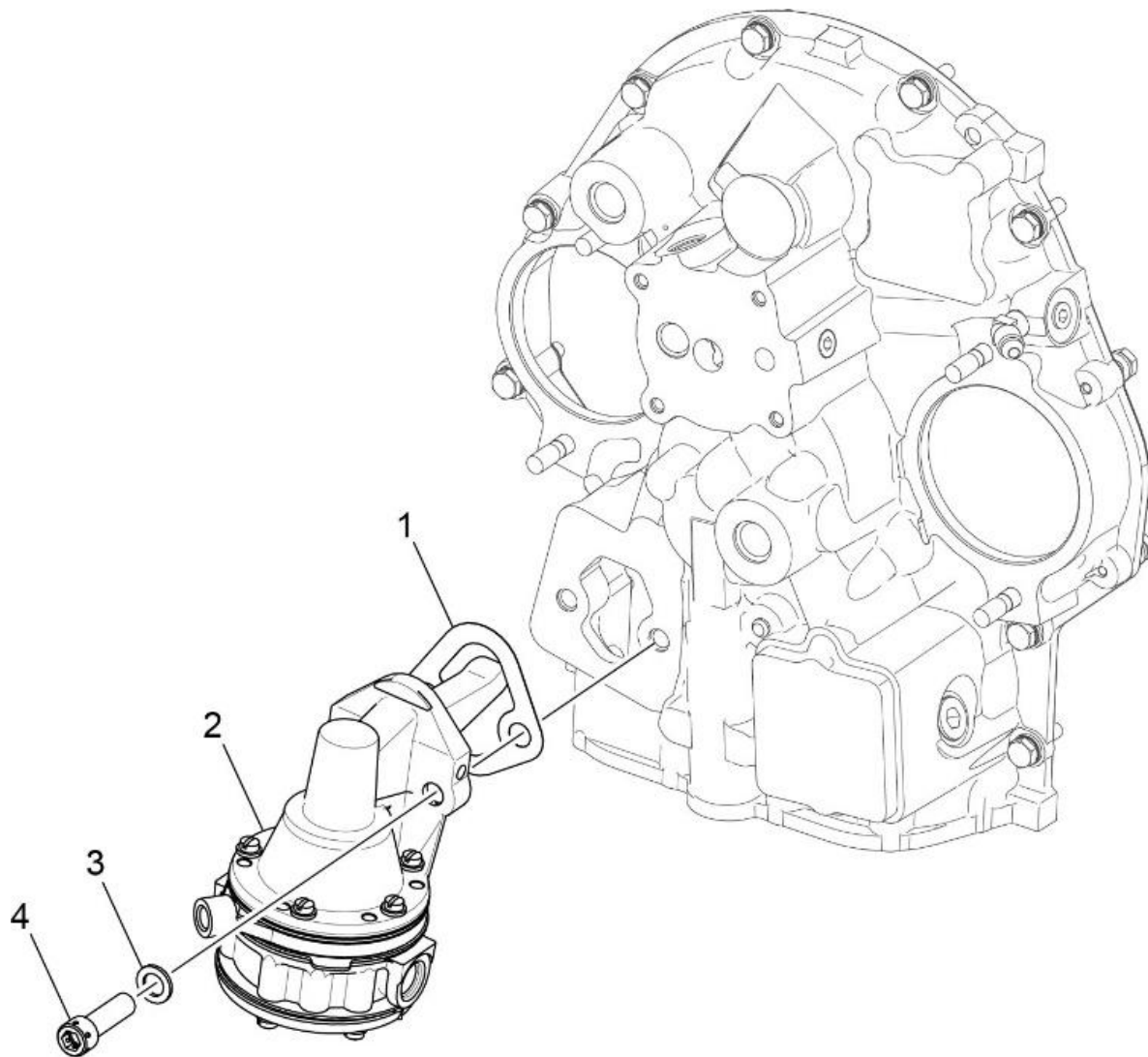


**Figure 18**  
**Oil Pump Assembly and Accessory Housing Attaching Parts**



**ACCESSORY DRIVES****Figure 18 – Oil Pump Assembly and Accessory Housing Attaching Parts**

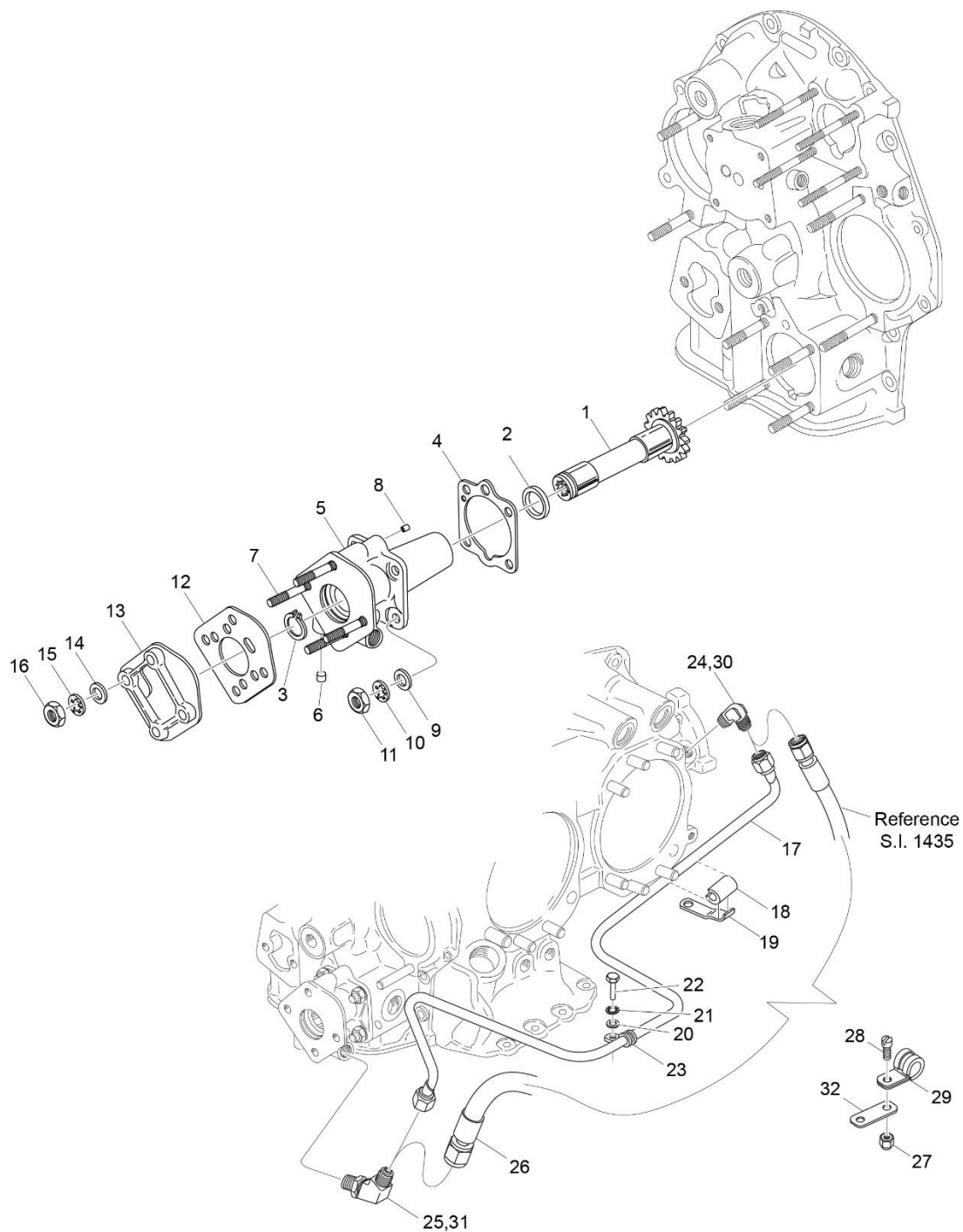
Figure Item	Code	Part Number	Description	Units per Assembly
1		78531	BODY ASSY., Oil pump	1
2	❖	LW-18110	IMPELLER ASSY, Oil pump driven	1
3		61174	SHAFT, Oil pump drive	1
4		STD-35	WASHER, 5/16 plain	3
5		STD-1420	NUT, 5/16-18 slotted	3
6		LW-14260	SEAL, Tachometer drive, oil	1
7		STD-8	WASHER, 1/4 plain	12
8		STD-160	WASHER, 1/4 lock, internal teeth	12
9		LW-25-0.94	BOLT, 1/4-20 x 15/16 long, hex. head	9
10		LW-25-1.13	BOLT, 1/4-20 x 1-1/8 long, hex. head	1
11		LW-25-1.44	BOLT, 1/4-20 x 1-7/16 long, hex. head	2
❖ To ensure impellers are replaced together, oil pump impellers available in kit form only.				



**Figure 19**  
**Fuel Pump Assembly and Attaching Parts**

**ACCESSORY DRIVES****Figure 19 - Fuel Pump Assembly and Attaching Parts**

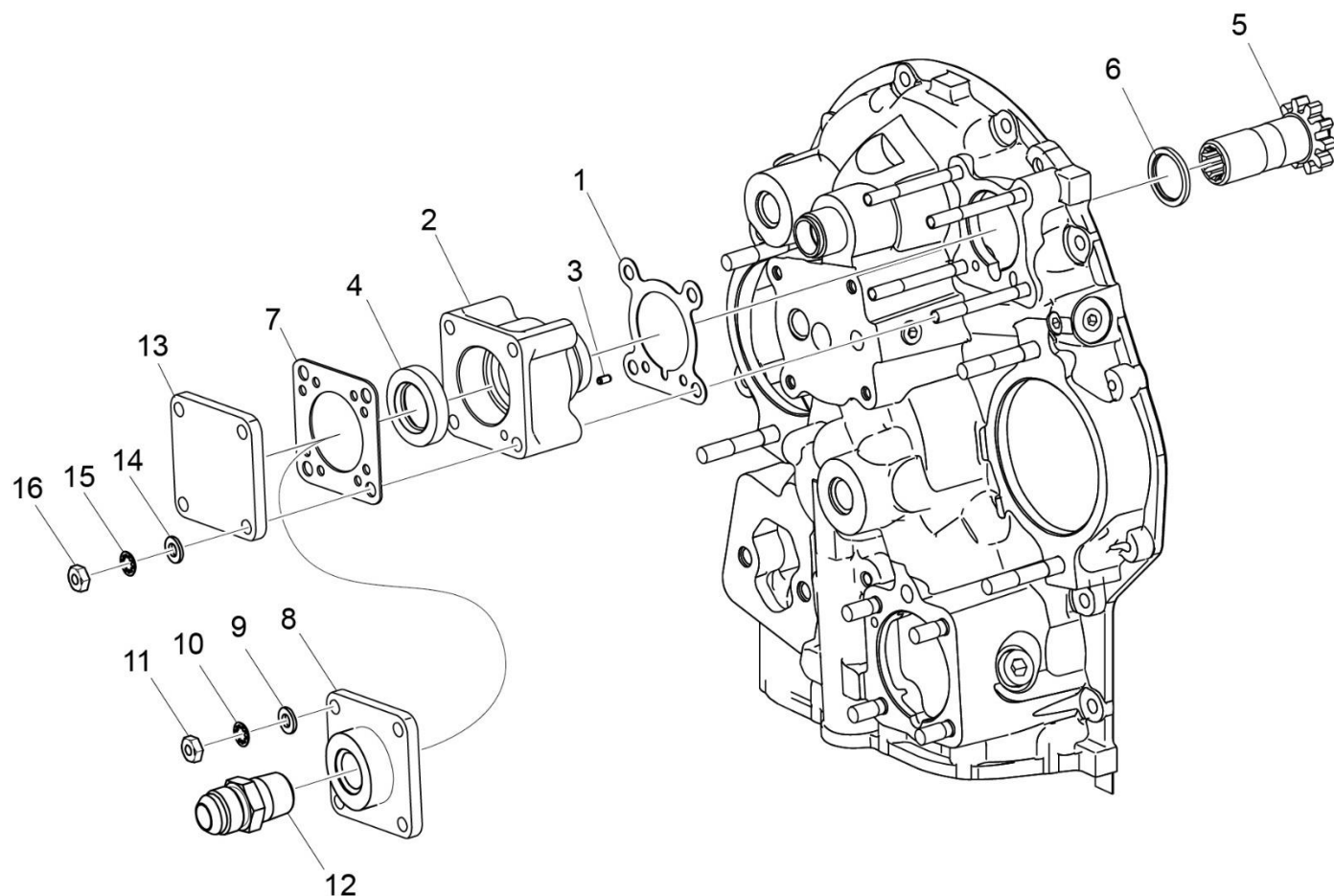
<b>Figure Item</b>	<b>Code</b>	<b>Part Number</b>	<b>Description</b>	<b>Units per Assembly</b>
1		60096	GASKET, Fuel pump	1
2		62B26931	FUEL PUMP, High pressure	1
		LW-15473	FUEL PUMP. Dual diaphragm, high pressure	1
3		STD-33	WASHER, 3/8 Plain	2
4		STD-1882	SCREW, 3/8-16 x 1-9/32 long, socket dr.	2



**Figure 20**  
**Propeller Governor Drive, Cover, Oil Lines and Adapter Assembly**

**ACCESSORY DRIVES****Figure 20 – Propeller Governor Drive, Cover, Oil Lines and Adapter Assembly**

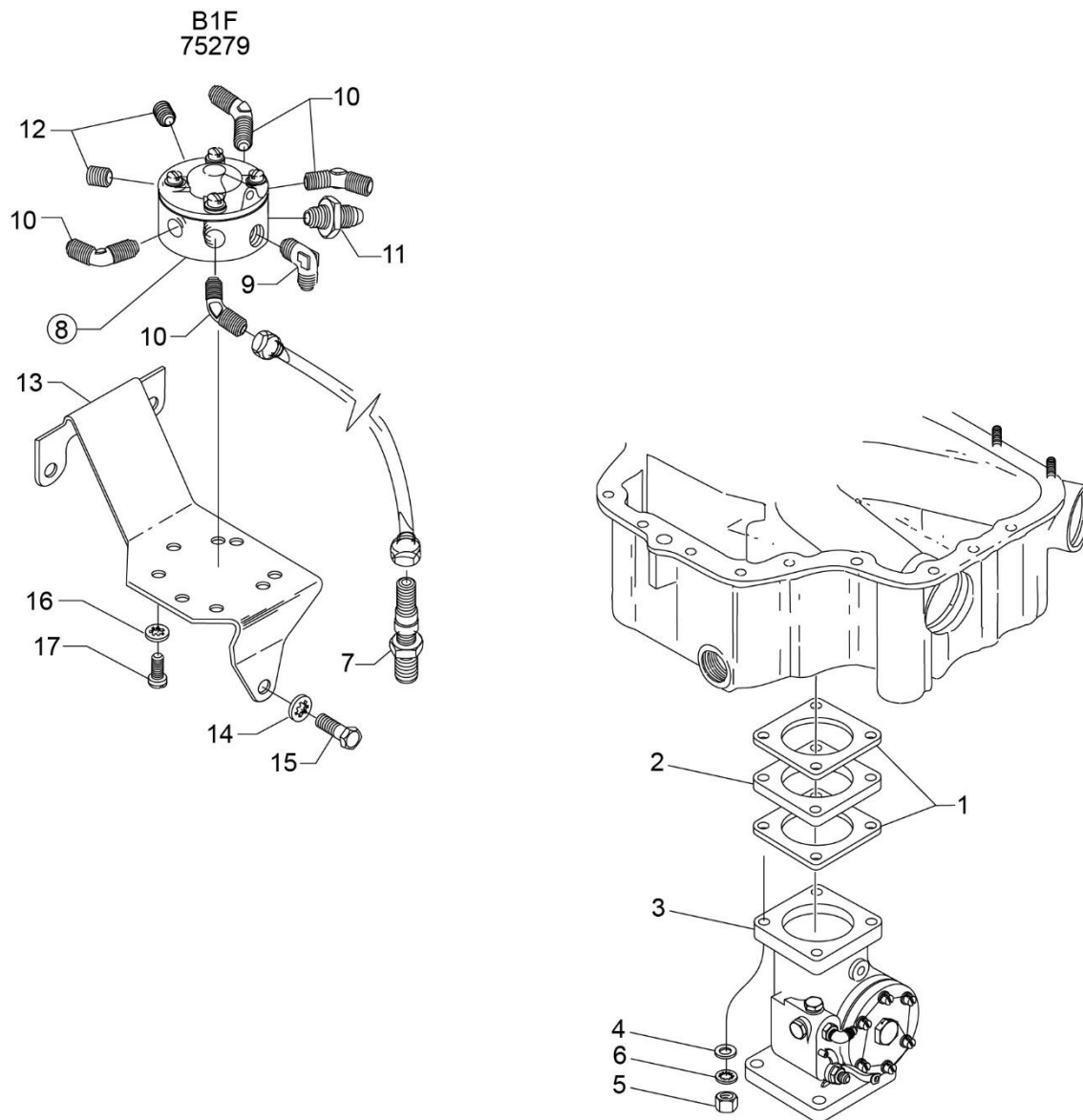
Figure Item	Code	Part Number	Description	Units per Assembly
1		68317	SHAFTGEAR, Propeller governor drive	1
2		71596	WASHER, Accessory drive gear	1
3		STD-1221	RING, 13/16 dia. x 1/32 thick, external retaining	1
4		68315	GASKET, Accessory drive adapter	1
5		75153	ADAPTER ASSY., Propeller governor driven	1
6		1102	PLUG, 1/8 pipe	1
7		31C-16	STUD, 5/16-18 x 2.00 long	4
8		STD-1774	PIN, 1/8 dia. x 1/4 lmg	1
9		STD-35	WASHER, 5/16 plain	4
10		STD-475	WASHER, 5/16 lock, internal teeth	4
11		STD-1410	NUT, 5/16-18 plain	4
12		72053	GASKET, Governor	1
13		72378	COVER, Governor drive	1
14		STD-35	WASHER, 5/16 plain	4
15		STD-475	WASHER, 5/16 lock, internal teeth	4
16		STD-1410	NUT, 5/16-18 plain	4
17		75167	TUBE ASSEMBLY, Propeller governor oil line	1
18		STD-1930	HOSE, 3/8 I.D. x 1.00 long	1
19		75165	CLIP, Propeller governor oil line support	1
20		STD-35	WASHER, 5/16 plain	3
21		STD-475	WASHER, 5/16 lock, internal teeth	1
22		LW-31-0.94	BOLT, 5/16-18 x 15/16 long, hex. head	1
23		LW-16266-25-38	CLAMP, 3/8 I.D. x 1/4 diameter screw	1
24		MS20822-6	ELBOW, 1/4 NPT to 3/8 tube	1
25		74070	ELBOW, 3/8 flared tube & 9/16-18	1
26		02M22809-6S293	HOSE ASSY., Teflon, 3/8 hose, straight fittings	1
27		STD-670	LOCKNUT, No. 10-32	1
28		STD-692	SCREW, No. 10-32 x 1/2 long, rd. head	1
29		LW-16266-10- 75	CLAMP	1
30		MS20822-6	ELBOW, 1/4 NPT to 3/8 flared tube, 90°	1
31		74070	ELBOW, 3/8 flared tube & 9/16-18 standard thread	1
32		73152	BRACKET, Support clamp	1



**Figure 21**  
**Vacuum Pump Drive and Cover**

**ACCESSORY DRIVES****Figure 21 – Vacuum Pump Drive and Cover**

<b>Figure Item</b>	<b>Code</b>	<b>Part Number</b>	<b>Description</b>	<b>Units per Assembly</b>
1		61183	GASKET, Accessory adapter	1
2		61098	ADAPTER ASSY., Vacuum pump	4
3		STD-1774	PIN, 1/8 dia. x 1/4 long	1
4		06A19956	OIL SEAL, 7/8 LD. x 1-1/2 O.D. x 5/16 wide	4
5		72970	GEAR ASSY., Vacuum pump driven	4
6		71596	WASHER, Accessory drive gear	4
7		8313	GASKET, Vacuum pump	1
8		LW-16878*	BREATHER, Adapter	1
9		STD-8*	WASHER, 1/4 plain	4
10		STD-160*	WASHER, 1/4 lock, internal teeth	4
11		STD-1411*	NUT, 1/4-20 plain	4
12		AN816-I0D*	NIPPLE, 1/2 NPT to 5/8 tube	1
13		60430	COVER, Vacuum pump	1
14		STD-8	WASHER, 1/4 plain	4
15		STD-160	WASHER, 1/4 lock, internal teeth	4
16		STD-1411	NUT, 1/4-20 plain	4

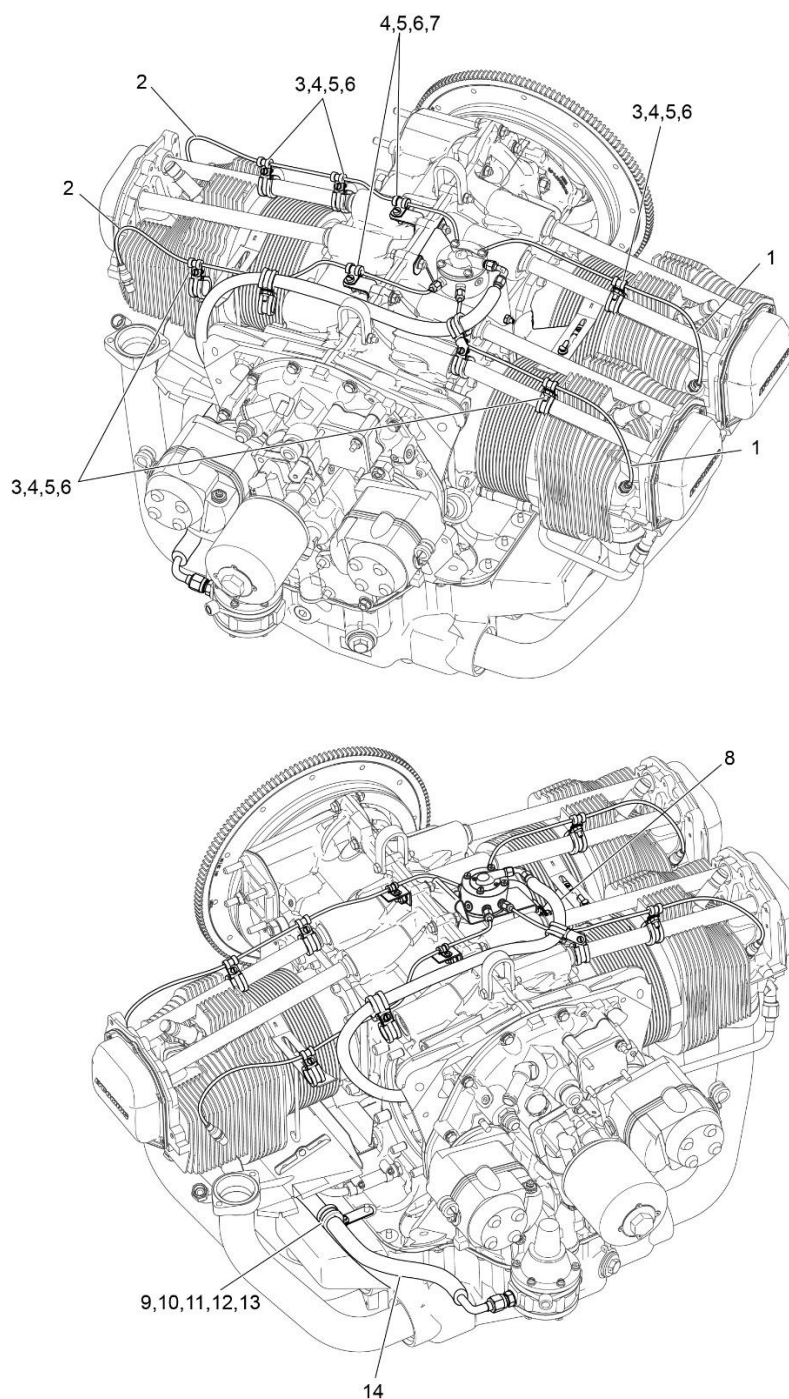


**Figure 22**  
**Fuel Injector, Fuel Manifold, and Injection Nozzles**



**FUEL DISTRIBUTION****Figure 22 – Fuel Injector, Fuel Manifold, and Injection Nozzles**

Figure Item	Code	Part Number	Description	Units per Assembly
1		66224	GASKET, Fuel injector	2
2		73161	SPACER, Fuel injector	1
3		61J26425	FUEL INJECTOR (2524291-11)	1
4		STD-35	WASHER, 5/16 plain	4
5		STD-1410	NUT, 5/16-18 plain	4
6		STD-475	WASHER, 5/16 lock, internal teeth	4
7		63C26450	NOZZLE, Injection, low (2524864-2)	4
8		63B26702	MANIFOLD ASSY., Fuel	1
9		MS20822-4	ELBOW, 1/4 tube, 1/8 NPT, 90°	1
10		AN791-2	ELBOW, Union, 45°, 1/8 tube	4
11		02G21382	NIPPLE, Nozzle pressure gauge	1
12		1102	PLUG, 1/8-27 NPT, Allen head	2
13		75009	BRACKET, Fuel manifold	1
14		STD-251	WASHER, No. I O internal lock	1
15		STD-82	SCREW, No. 10-24 x 1/2 long, fill. head.	1
16		STD-160	WASHER, 1/4 lock, internal teeth	4
17		LW-25-0.50	BOLT, 1/4-20 x 1/2 long, hex. head.	4

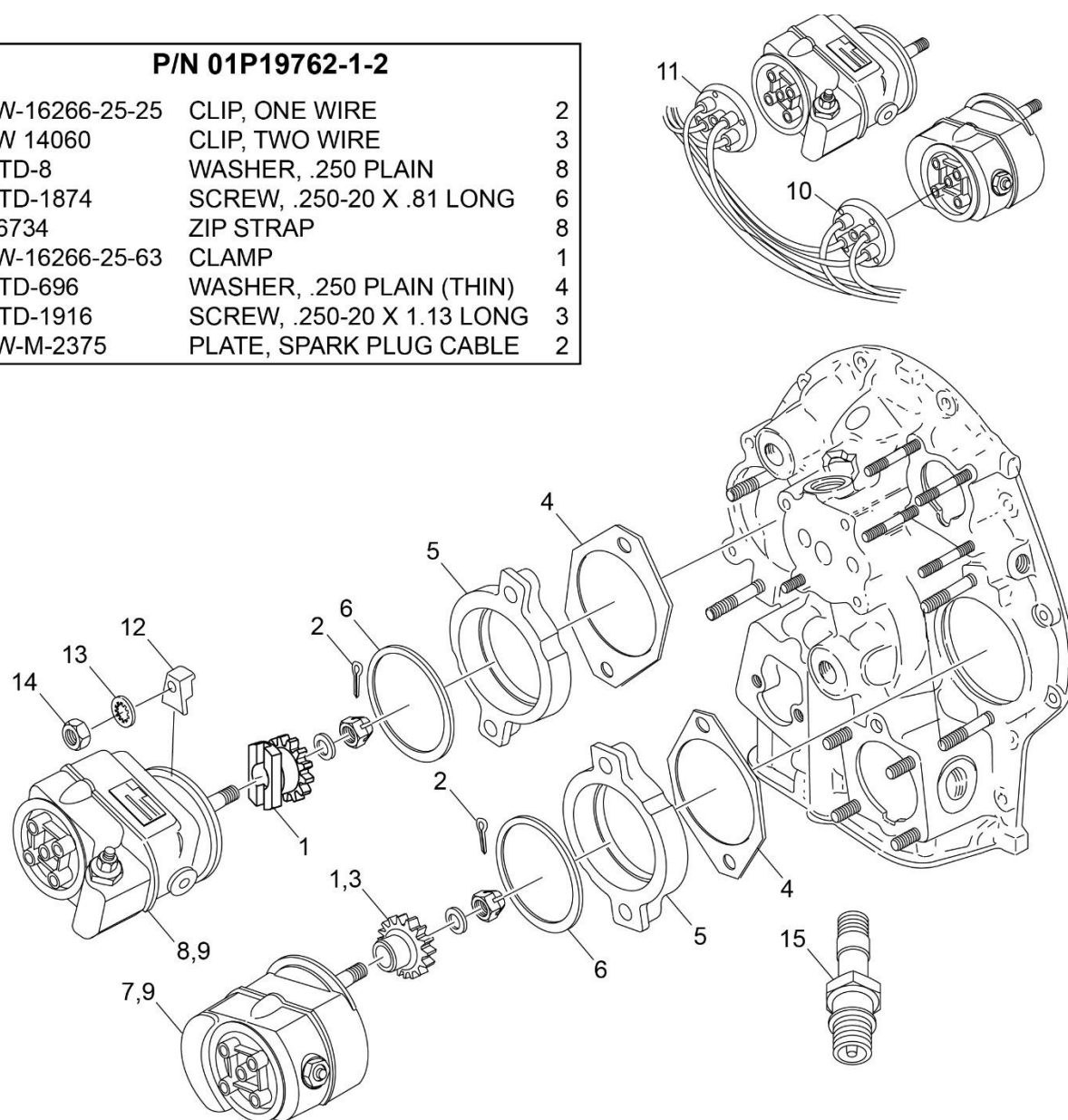


**Figure 23**  
**Fuel Lines and Attaching Parts**

**FUEL DISTRIBUTION****Figure 23 – Fuel Lines and Attaching Parts**

Figure Item	Code	Part Number	Description	Units per Assembly
1		LW-12098-0-140	TUBE ASSY., Fuel line CYL 1 & 3	2
2		LW-12098-0-210	TUBE ASSY., Fuel line CYL 2 & 4	2
3		LW-16266-10- 75	CLAMP, 3/4 dia. for No. 10 screw	4
4		LW-16266-10-13	CLAMP, 1/8 dia. for No. 10 screw	6
5		STD-860	SCREW, No. 10-32 x 5/8 long, fill. head.	6
6		STD-670	LOCKNUT, No. 10-32	6
7		73136	BRACKET, Extension, fuel in. line	2
8		LW- 12798-4S204	HOSE ASSY., 1/4 hose, straight	1
9		72815	BRACKET, Support clamp, 90°	1
10		LW- 16266-25-63	CLAMP, 5/8 I.D. x 1/4 dia. screw	1
11		STD-425	WASHER, No. 10 plain	1
12		STD-860	SCREW, No. 10-32 x 5/8 long, fill. head:	1
13		STD-670	LOCKNUT, No. 10-32	2
14		LW-12877-6S161	HOSE ASSY., 3/8 hose, 90° elbow Fuel pump to Fuel injector	1

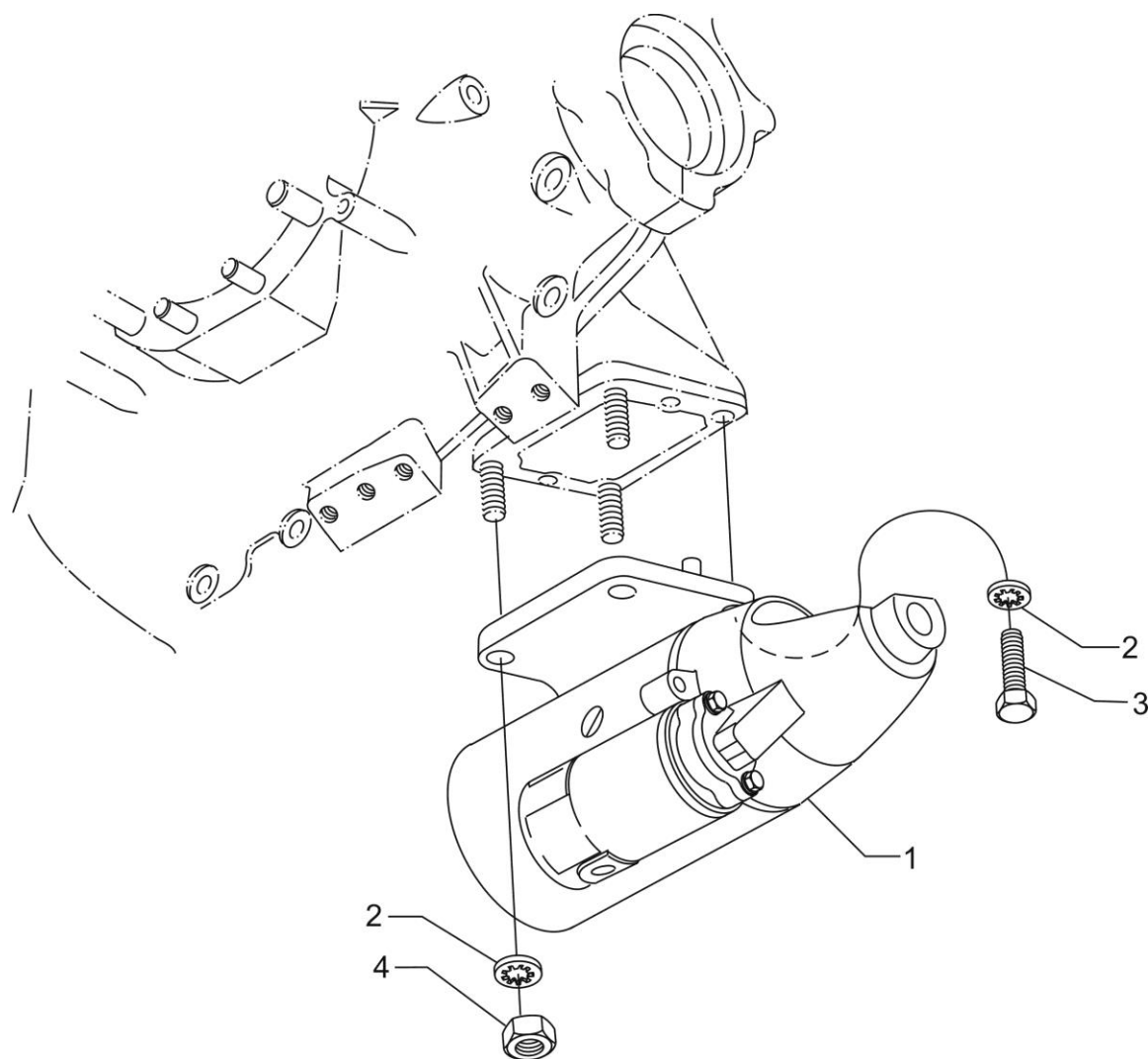
P/N 01P19762-1-2		
LW-16266-25-25	CLIP, ONE WIRE	2
LW 14060	CLIP, TWO WIRE	3
STD-8	WASHER, .250 PLAIN	8
STD-1874	SCREW, .250-20 X .81 LONG	6
76734	ZIP STRAP	8
LW-16266-25-63	CLAMP	1
STD-696	WASHER, .250 PLAIN (THIN)	4
STD-1916	SCREW, .250-20 X 1.13 LONG	3
LW-M-2375	PLATE, SPARK PLUG CABLE	2



**Figure 24**  
**Magnetos, Magneto Drives, Harnesses, and Spark Plugs**

**DISTRIBUTION****Figure 24 – Magnetos, Magneto Drives, Harnesses, and Spark Plugs**

Figure Item	Code	Part Number	Description	Units per Assembly
1		61665	GEAR, Magneto, impulse coupling, roller tappet	2
		68C19622	GEAR, Magneto, impulse coupling, flat tappet	2
2		MS9245-44	COTTER PIN, 3/32 diameter x 5/8 long	2
3		68CI9622	GEAR, Magneto	2
4		62224	GASKET, Magneto adapter	2
5		LW-12706	ADAPTER, Magneto, impulse coupling	2
6		LW-12681	GASKET, Magneto	2
7		66GP-0SANN	MAGNETO, Slick, Plain (4370) flat	1
	•	66GHP-OSBNN	MAGNETO (ES4370)	1
8		66GR25SANN	MAGNETO, Slick, Retard ( 4347) flat	1
	•	66GHR25SBNN	MAGNETO (ES4347)	1
9		66GC25SFNN	MAGNETO, Slick, Impulse (4373) roller	2
	•	66GHC25SANN	MAGNETO (ES4373)	2
10		67P20414	HARNESS ASSY., Right, Slick Model M-2982	1
11		67P20415	HARNESS ASSY., Left, Slick Model M-2981	1
12		66M21195	CLAMP, Magneto	4
13		STD-475	WASHER, 5/16 lock, internal teeth	4
14		STD-1410	NUT, 5/16-18 plain	4
15	*	1182-E7	SPARK PLUG, Champion (REM38E)	8
	**	01P19762-1-2	BAG, Magneto harness attaching	1
<ul style="list-style-type: none"> <li>• See latest revision of Lycoming Service Instruction No. 1443 for complete listing of approved magnetos.</li> <li>* Refer to the latest revision of Lycoming Service Instruction No. 1042 for complete listing of all approved spark plugs.</li> <li>** See Figure for a breakdown of individual parts contained in the harness attaching parts bag. These parts to be attached by customer per engine line drawing included in each bag.</li> </ul>				



**Figure 25**  
**Starter Attaching Parts**

**CRANKING****Figure 25 - Starter Attaching Parts**

<b>Figure Item</b>	<b>Code</b>	<b>Part Number</b>	<b>Description</b>	<b>Units per Assembly</b>
1		31B22101	STARTER, SKY-TEC (149-24PM)	1
2		STD-475	WASHER, 5/16 lock, internal teeth	4
3		LW-31-0.94	BOLT, 5/16-18 x 15/16 long, hex. head	1
4		STD-1410	NUT, 5/16-18 plain	3
NOTE: See latest revision of Lycoming Service Instruction No. 1154 for complete listing of FAA approved starters and alternators.				

This page intentionally left blank.



**SERVICE KIT SECTION****Seal and Gasket Set**

<b>PART NO.</b>	<b>PART NAME</b>	<b>Qty.</b>
<b>75439-1</b>	<b>SEAL AND GASKET SET</b>	<b>1</b>
AN901-8A	GASKET, Metal tube connect seal	1
LW-10332	LOCKPLATE, Crankshaft gear	1
LW-12272	LOCKPLATE, Shroud tube	4
LW-12681	GASKET, Magneto	2
06B23862	GASKET, Oil filter adapter	1
LW-13353	GASKET, Oil sump	1
LW-13792 ❖	SEAL, Crankshaft oil	1
LW-14260	SEAL, Tachometer drive oil	1
LW-14995	SPRING, Shroud tube	4
LW-18639	LOCKPLATE, Crankshaft gear	1
LW-18661	SEAL, Shroud tube	8
STD-475	WASHER, 5/16 lock, internal teeth	4
STD-213	SEAL, Oil	1
06A19956	SEAL, Oil	1
06E19769-0.63	GASKET	2
06E19769-1.00	GASKET	1
06E19769-1.25	GASKET	1
1691-C	GASKET, Fuel pump	1
60096	GASKET, Fuel pump	1
61173	GASKET, Oil pressure housing	1
61183	GASKET, Accessory adapter	1
62224	GASKET, Magneto adapter	3
66224	GASKET, Fuel injector	2
68315	GASKET, Accessory drive adapter	1
69164	GASKET, Fuel pump adapter	1
69345	SPACER	4
69551	GASKET, Accessory drive adapter	1
70310	SEAL, Shroud tube	8
70455	GASKET	1
71481	RING, Oil seal	4
71973	GASKET, 2 bolt flange	4
72053	GASKET, Governor	2
72059	GASKET, Oil level gage	1
72075	SEAL, Oil	6
72078	LOCKPLATE	2
72091	RING, Oil seal	2
72220	GASKET, Oil level gage	1

**Seal and Gasket Set (Cont.)**

<b>PART NO.</b>	<b>PART NAME</b>	<b>Qty.</b>
72312	RING, Oil seal	1
72829	LOCKPLATE	1
73383	LOCKPLATE	2
73817	LOCKPLATE	2
73818	GASKET, Accessory housing	1
74065	RING, Oil level gage seal	1
74068	RING, Oil level gage plug	1
06B26669	GASKET, Rocker box cover (Silicone)	4
76510	GASKET, Oil cooler by-pass valve	1
76940	SEAL, Crankshaft oil	1
77154	GASKET, Carburetor	1
77611	GASKET, Exhaust flange	4
8313	GASKET, Vacuum pump	1
77569	RING, Seal, intake pipe	4
MS29512-04	O-RING, 0.351 I.D. x 0.072 section	1
06A23493	SEAL, Shroud tube	8
SSP-115	STICKER	1
❖ Refer to latest revision of Lycoming Service Instruction No. 1324 for application.		

### Cylinder, Piston and Ring Assembly

PART NO.	PART NAME	Qty.
<b>05K21104</b>	<b>KIT – CYLINDER, PISTON AND RING ASSEMBLY</b>	<b>1</b>
16G30080-0101	CYLINDER AND HEAD ASSEMBLY	1
14D23912	PISTON	1
74241	RING, Piston, compression	2
14H29884	RING, Piston, oil regulating	1
LW-14078	PIN, Piston	1
71481	RING, Oil seal	1
LW-18661	SEAL, Shroud tube	2
70310	SEAL, Shroud tube	2
06A23493	SEAL, Shroud tube	2
06B26669	GASKET, Rocker box cover (Silicone)	1
72198	PLUG, Piston pin	2
77611	GASKET, Exhaust flange	1
71973	GASKET, 2 bolt	1
LW-12272	LOCKPLATE, Shroud tube	1
1102	PLUG	2
SSP-115	STICKER	1
SSP-299	TAG	1

This page intentionally left blank.

**Numerical Index**

PART NO.	PART NAME	PAGE NO.	PART NO.	PART NAME	PAGE NO.
01K28983	BUSHING	15	15F28835-36	ROD ASSY (FT)	19
01L23459	WASHER	21	15F28835-37	ROD ASSY (FT)	19
01P19762-1-2	BAG	47	15G23461	SHROUD TUBE	21
02G21382	NIPPLE	43	15M23451	CAMSHAFT	11
02M22809-6S293	HOSE ASSY	39	15M23452	CAMSHAFT ASSY	11
06A19956	OIL SEAL	41	16A30080-01	CYLINDER ASSY	17
06A23493	SEAL	21	16R22126	GUIDE	17
06B23862	GASKET	29	17A23938	VALVE	21
06B26669	GASKET	23	17B23936	VALVE	21
06E19769-0.63	GASKET	29	17C19386	CAP	21
06E19769-1.25	GASKET	7	17C21191	KEY	21
07A19474	BRACKET	1	17D29055	SPRING	21
07F23268	STRUT	1	17D29060	SPRING	21
1028-B	BALL	7	17F19357	ROCKER ASSY	19
1102	PLUG	5	18A26093	BEARING	7
1102	PLUG	17	18D26098	BEARING	7
1102	PLUG	33	18M26105	BEARING	15
1102	PLUG	39	21A21533-04	HOUSING ASSY	33
1102	PLUG	43	21A21533-05	HOUSING ASSY	33
1182-E7	SPARK PLUG	17	21A21533-16	HOUSING ASS	33
1182-E7	SPARK PLUG	47	21A21533-26	HOUSING ASSY	33
11B20061-1S	CRANKCASE ASSY	5	23D26777	PLUNGER	11
11B20061-1SL	CRANKCASE ASSY	5	25C-10	STUD	27
13B47120	C'SHAFT ASSY	9	25C-10	STUD	29
13S19646	GEAR	9	25C-12	STUD	33
14D23912	PISTON	15	25C-22	STUD	33
14H29884	RING	15	25C-8	STUD	17
14S23890	BOLT	15	31C-17	STUD	27
15B21319	SOCKET	21	31B22101	STARTER	49
15B26066	PLUNGER ASSY	21	31C-12	STUD	5
15B26262	BODY	7	31C-12	STUD	17
15F28835-28	ROD ASSY (RT)	19	31C-12	STUD	33
15F28835-29	ROD ASSY (RT)	19	31C-13	STUD	5
15F28835-30	ROD ASSY (RT)	19	31C-16	STUD	39
15F28835-31	ROD ASSY (RT)	19	31C-19	STUD	33
15F28835-32	ROD ASSY (RT)	19	31CD-17	STUD	33
15F28835-33	ROD ASSY (RT)	19	32CI9553	ALTERNATOR	3
15F28835-34	ROD ASSY (RT)/(FT)	19	36819484	PULLEY	3
15F28835-35	ROD ASSY (FT)	19	37AI9773-376	BELT	3

PART NO.	PART NAME	PAGE NO.
38-13	STUD	5
383-B	NUT	19
38D-17	STUD	5
50-15	STUD	5
53E22144	VALVE ASSY	29
57A21009	OIL SEPARATOR	27
57B19829	OIL VALVE	27
61084	SPRING	7
60009	KEY	21
60096	GASKET	37
60430	COVER	41
60803	STRAP	13
61098	ADAPTER ASSY	41
61173	GASKET	29
61174	SHAFT	35
61183	GASKET	41
61247	COVER	23
61510	PLUG	9
61665	GEAR	47
61J26425	FUEL INJECTOR	43
62224	GASKET	47
62417	PLUG	29
62817	SCREEN ASSY	29
62B26931	FUEL PUMP	37
63B26702	MANIFOLD ASSY	43
63C26450	NOZZLE	43
65441	SEAT	21
66224	GASKET	43
66610	BUSHING	17
66796	INSERT	17
66GC25SFNN	MAGNETO	47
66GHC25SANN	MAGNETO	47
66GP-0SANN	MAGNETO	47
66GHP-OSBNN	MAGNETO	47
66GR25SANN	MAGNETO	47
66GHR25SBNN	MAGNETO	47
66M21195	CLAMP	47
67P20414	HARNESS ASSY	47
67P20415	HARNESS ASSY	47
68315	GASKET	39

PART NO.	PART NAME	PAGE NO.
68317	SHAFTGEAR	39
68668	SPRING	7
68759	TUBE ASSEMBLY	23
68760	TUBE ASSEMBLY	23
68761	TUBE ASSEMBLY	23
68C19622	GEAR	47
69510	HOUSING	29
69603	HOSE	25
69796	DOWEL	5
70310	SEAL	21
70485	PIPE	25
71140	FITTING	29
71481	RING	19
71596	WASHER	39
71596	WASHER	41
71610	HOOK	23
71611	RETAINER	23
71620	BOLT	29
71623	WASHER	29
71973	GASKET	25
72053	GASKET	39
72057	SEAT	17
72058	SEAT	17
72059	GASKET	31
72075	SEAL	7
72091	RING	7
72155-S	BUSHING	9
72198	PLUG	15
72378	COVER	39
72566	GEAR	9
72815	BRACKET	45
72970	GEAR ASSY	41
73136	BRACKET	45
73152	BRACKET	39
73161	SPACER	43
73346	FLANGE	25
73383	LOCKPLATE	1
73818	GASKET	33
74068	RING	31
74070	ELBOW	39

PART NO.	PART NAME	PAGE NO.
74070	ELBOW	39
74241	RING	15
74637	BUSHING	19
74887	SPACER	19
74996	GEAR ASSEMBLY	11
75009	BRACKET	43
75061	BOLT	15
75072	GEAR ASSEMBLY	11
75153	ADAPTER ASSY	39
75154	STUD	5
75165	CLIP	39
75167	TUBE ASSEMBLY	39
75339	BAFFLE ASSEMBLY	23
75380	LINK	1
75656-S	BUSHING	9
75657-S	BUSHING	9
75736	TUBE	31
76118	SPACER	11
76119	SHIELD	33
76121	SHAFT ASSEMBLY	11
76220	STUD	13
76510	GASKET	29
76534	SHIM	1
76943	GUIDE	17
77309	BUSHING	11
77467	SPRING	7
77611	GASKET	17
77808	VALVE ASSY	7
77852	OIL FILTER BASE	29
78531	BODY ASSY	35
78914	CONNECTION	27
8313	GASKET	41
AN6-16	BOLT	1
AN6-17	BOLT	1
AN6-34A	BOLT	13
AN791-2	ELBOW	43
AN816-10D	NIPPLE	41
AN901-8A	GASKET	29
AN960-616L	WASHER	13
AS5163D08	ELBOW	29

PART NO.	PART NAME	PAGE NO.
LRT23381	BODY	7
LW-12798-4S204	HOSE ASSY	45
LW-16266-25-63	CLAMP	45
LW-10077	SEAT	21
LW-11713	SPRING	7
LW-11750	CONN ROD ASSY	15
LW-11754	CAMSHAFT	11
LW-11997	SEAL	7
LW-12098-0-140	TUBE ASSY	45
LW-12098-0-210	TUBE ASSY	45
LW-12186	NUT	15
LW-12272	LOCKPLATE	21
LW-12681	GASKET	47
LW-12706	ADAPTER	47
LW-12877-6S161	HOSE ASSY	45
LW-12892	THRUST BUTTON	19
LW-13215	OIL FILTER	29
LW-13323	SEAT	21
LW-13353	GASKET	27
LW-13389	BAFFLE ASSEMBLY	23
LW-13751	FITTING	27
LW-13752	PLUG	27
LW-13753	FITTING	27
LW-13754	FITTING	27
LW-13755	BREATHER	27
LW-13790	SHAFT	19
LW-13792	SEAL	7
LW-13793	STUD	5
LW-13796	SHAFT	11
LW-13860	SUMP	27
LW-13861	SUMP ASSEMBLY	27
LW-13888	SCREEN	27
LW-14078	PIN	15
LW-14260	SEAL	35
LW-14313	ALTERNATOR	3
LW-14326	ALTERNATOR	3
LW-14371	ALTERNATOR	3
LW-14995	SPRING	21
LW-15473	FUEL PUMP	37
LW-15592-5-04	CLAMP	23

PART NO.	PART NAME	PAGE NO.
LW-15592-8-28	CLAMP	25
LW-16266-10- 75	CLAMP	39
LW-16266-10- 75	CLAMP	45
LW-16266-10-13	CLAMP	45
LW-16266-25-38	CLAMP	39
LW-16471	SUPPORT ASSY	9
LW-16475	SEAT	21
LW-16783-18	GAGE ASSEMBLY	31
LW-16878	BREATHER	41
LW-18085	SPRING	7
LW-18110	IMPELLER ASSY	35
LW-18639	LOCKPLATE	9
LW-18667	PIN	11
LW-18840	CAMSHAFT ASSY	11
LW-25-0.50	BOLT	43
LW-25-0.94	BOLT	27
LW-25-0.94	BOLT	35
LW-25-1.00	BOLT	29
LW-25-1.13	BOLT	13
LW-25-1.13	BOLT	27
LW-25-1.13	BOLT	35
LW-25-1.25	BOLT	25
LW-25-1.44	BOLT	35
LW-25-1.50	BOLT	13
LW-25-1.75	BOLT	13
LW-25SI.50	BOLT	13
LW-31-0.94	BOLT	1
LW-31-0.94	BOLT	39
LW-31-0.94	BOLT	49
LW-31H0.75	BOLT	1
LW-31H0.88	BOLT	11
MS20822-4	ELBOW	43
MS20822-6	ELBOW	39
MS20823-6D	ELBOW	17
MS20823-8	ELBOW	29
MS35489-20X	GROMMET	23
MS35769-21	GASKET	27
MS9245-44	COTTER PIN	47
STD-8	WASHER	13
STD-8	WASHER	25

PART NO.	PART NAME	PAGE NO.
STD-8	WASHER	27
STD-8	WASHER	29
STD-8	WASHER	35
STD-8	WASHER	41
STD-33	WASHER	13
STD-33	WASHER	37
STD-35	WASHER	1
STD-35	WASHER	17
STD-35	WASHER	35
STD-35	WASHER	39
STD-35	WASHER	43
STD-82	SCREW	43
STD-91	PLUG	27
STD-160	WASHER	13
STD-160	WASHER	25
STD-160	WASHER	27
STD-160	WASHER	29
STD-160	WASHER	35
STD-160	WASHER	41
STD-160	WASHER	43
STD-251	WASHER	43
STD-425	WASHER	45
STD-475	WASHER	17
STD-475	WASHER	39
STD-475	WASHER	43
STD-475	WASHER	47
STD-475	WASHER	49
STD-514	DOWEL	5
STD-551	PLUG	27
STD-557	DOWEL	5
STD-596	NUT	13
STD-670	LOCKNUT	39
STD-670	LOCKNUT	45
STD-678	WASHER	13
STD-684	NIPPLE	23
STD-690	WASHER	1
STD-692	SCREW	39
STD-713	COTTER PIN	1
STD-784	PLUG	29
STD-784	PLUG	33





PART NO.	PART NAME	PAGE NO.
STD-860	SCREW	45
STD-860	SCREW	45
STD-872	NUT	1
STD-872	NUT	13
STD-1623	INSERT	5
STD-1727	WASHER	1
STD-1774	PIN	39
STD-1774	PIN	41
STD-1821	HOSE	23

PART NO.	PART NAME	PAGE NO.
STD-1882	SCREW	37
STD-1925	SCREW	23
STD-1930	HOSE	39
STD-2090	NUT	19
STD-2168	NUT	11
STD-2231	RING	11
STD-2246	BOLT	9
STD-2249	NUT	13

This page intentionally left blank.