

O-540-F1B5 Illustrated Parts Catalog

June 2025

PC-O-540-F1B5 (Supersedes parts catalog PC-515-2)



652 Oliver Street
Williamsport, PA 17701

O-540-F1B5 Illustrated Parts Catalog

Lycoming Part Number: PC-O-540-F1B5

For additional information:

Mailing address:

Lycoming Engines
652 Oliver Street
Williamsport, PA 17701 U.S.A.

Phone:

Product Support: U.S. and Canada toll free: +1-877-839-7878
International Customers: +1-570-323-7222

Lycoming Product Support regular business hours are:

Monday through Thursday from 8:00 A.M. through 10:00 P.M. Eastern Time (-5 GMT)
Friday from 8:00 A.M. through 6:00 P.M. Eastern Time (-5 GMT)

or Email: Technicalsupport@lycoming.com

Visit us online at:

www.lycoming.com



©2025 Lycoming. All Rights Reserved.

Lycoming and "Powered by Lycoming" are trademarks or registered trademarks of Lycoming.

Lycoming Engines, a division of AVCO Corporation.

All brand and product names referenced in this publication are trademarks or registered trademarks of their respective companies.

Record of Revisions

NOTICE: Service Documents with a later release date than this parts catalog override parts information in this document.

| Rev No. | Revision Changes | Issue Date |
|---------|--|------------|
| New | Initial Release of PC-O-540-F1B5 – Supersedes parts catalog PC-515-2, dated October 2009 | June 2025 |


This page intentionally left blank.

TABLE OF CONTENTS

| <u>Subject</u> | <u>Chapter - Section</u> | <u>Page</u> |
|--|--------------------------|-------------|
| Frontal | | |
| Record of Revisions | | i |
| Table of Contents | | iii |
| Introduction | | v |
| Abbreviations and Acronyms | | ix |
| Oversize and Undersize Part Listing | | xi |
| Electrical Power | 24-00 | |
| DC Generation | 24-30 | |
| 1. Alternator Attaching Parts | | 0-1 |
| 2. Alternator Assembly and Belt | | 2-3 |
| Reciprocating Engine | 72-00 | |
| Front Section | 72-10 | |
| 1. Propeller Governor Plugs and Cover | | 4-5 |
| Power Section | 72-20 | |
| 1. Crankcase Assembly | | 6-7 |
| 2. Crankcase Related Parts | | 8-9 |
| 3. Crankshaft Assembly and Related Parts | | 10-11 |
| 4. Camshaft and Related Parts | | 12-13 |
| 5. Crankshaft Idler Gears | | 14-15 |
| 6. Crankcase Attaching Parts | | 16-17 |
| Cylinder Section | 72-30 | |
| 1. Connecting Rods, Pistons and Ring Assemblies | | 18-19 |
| 2. Cylinder Assembly | | 20-21 |
| 3. Valve Assembly and Cylinder Related Parts | | 22-25 |
| 4. Cylinder Head Drain Tubes and Intercylinder Cooling Baffles | | 26-27 |
| 5. Intake Pipes and Attaching Parts | | 28-29 |
| Lubrication System | 72-50 | |
| 1. Oil Level Gage Assembly | | 30-31 |
| 2. Oil Sump Assembly and Induction Housing | | 32-33 |
| Accessory Drives | 72-60 | |
| 1. Accessory Housing Assembly | | 34-35 |
| 2. Oil Pump Assembly and Accessory Housing Attaching Parts | | 36-37 |

| <u>Subject</u> | <u>Chapter - Section</u> | <u>Page</u> |
|---|---------------------------------|--------------------|
| Reciprocating Engine (Cont.) | 72-00 | |
| Accessory Drives (Cont.) | 72-60 | |
| 3. Fuel Pump Cover | | 38-39 |
| 4. Vacuum and Hydraulic Pump Covers | | 40-41 |
| 5. Oil Cooler Bypass Valve and Breather Fitting | | 42-43 |
| 6. Oil Pressure Screen Assembly and Oil Cooler Bypass Valve | | 44-45 |
| Engine and Fuel Control | 73-00 | |
| Fuel Distribution | 73-10 | |
| 1. Carburetor and Related Parts | | 46-47 |
| Ignition Distribution System | 74-00 | |
| Distribution | 74-20 | |
| 1. Magnetos, Magneto Drives, Harnesses and Spark Plugs | | 48-49 |
| Starting | 80-00 | |
| Cranking | 80-10 | |
| 1. Starter Attaching Parts | | 50-51 |
| Back Section | | |
| Service Kit Section | | 52-54 |
| Numerical Index | | 55-60 |

Introduction

 CAUTION: DO NOT USE THIS CATALOG AS AN ASSEMBLY OR INSTALLATION DOCUMENT. THIS CATALOG MUST ONLY BE USED TO IDENTIFY PARTS IN CONJUNCTION WITH THE APPLICABLE OVERHAUL MANUAL.

Purpose of this Catalog

This Illustrated Parts Catalog (IPC) contains a complete list of spare parts for the Lycoming O-540-F1B5 engine model.

How to Use this Catalog

This catalog is based on the Air Transport Association (ATA) Spec 100 format. To clarify illustrations, Lycoming has taken discretion to classify non-system related assemblies and components in the same chapters, because they are physically connected.

This catalog is frequently updated by Service Bulletins (SB) and Service Instructions (SI). The updated information will be incorporated into subsequent full revisions of this catalog.

The ATA two-element numbering system provides consistency throughout various manuals. The bottom of each page (beyond the frontal section) contains a two-element number (##-##). In the two-element numbering, the first two digits represent a chapter, and the next two digits subdivide the material into a more specific section.

The ATA format specifies the subject matter for each chapter-section. According to the ATA Standards, the following chapters apply to the O-540-F1B5 Illustrated Parts Catalog:

24 (Electrical Power), 72 (Reciprocating Engine), 73 (Engine and Fuel Control), 74 (Ignition), and 80 (Starting).

EXAMPLE: **74** **—** **20**
Chapter Section
Ignition **Distribution**

NOTICE: Refer to the IPC Table of Contents for the subsystems identified in each section.

Numerical Index

The Numerical Index is a single list of part numbers, names and their locations within the IPC. It is useful for locating parts when you only know the number or name of the part.

Description column

Indentation of a part name represents a lower level of assembly. Attaching parts have the same indentation level and are below their associated parts grouping or assembly. This column is often referred to as the "Nomenclature" on other ATA Spec manuals.

Units per Assembly Column

Where more than one assembly exists, this column contains the quantity of a specific part required in the build sequence of only one next higher assembly. The letters “AR” are for “as required” applicable to bulk items or non-illustrated select-from-range-parts. The letters “RF” identify items for reference.

Vendor Accessories

Parts coverage of Vendor Accessories used on Lycoming engines are in the applicable Vendor's Parts Catalog. A list of vendors' addresses is included in the latest revision of Lycoming Service Letter No. L114.

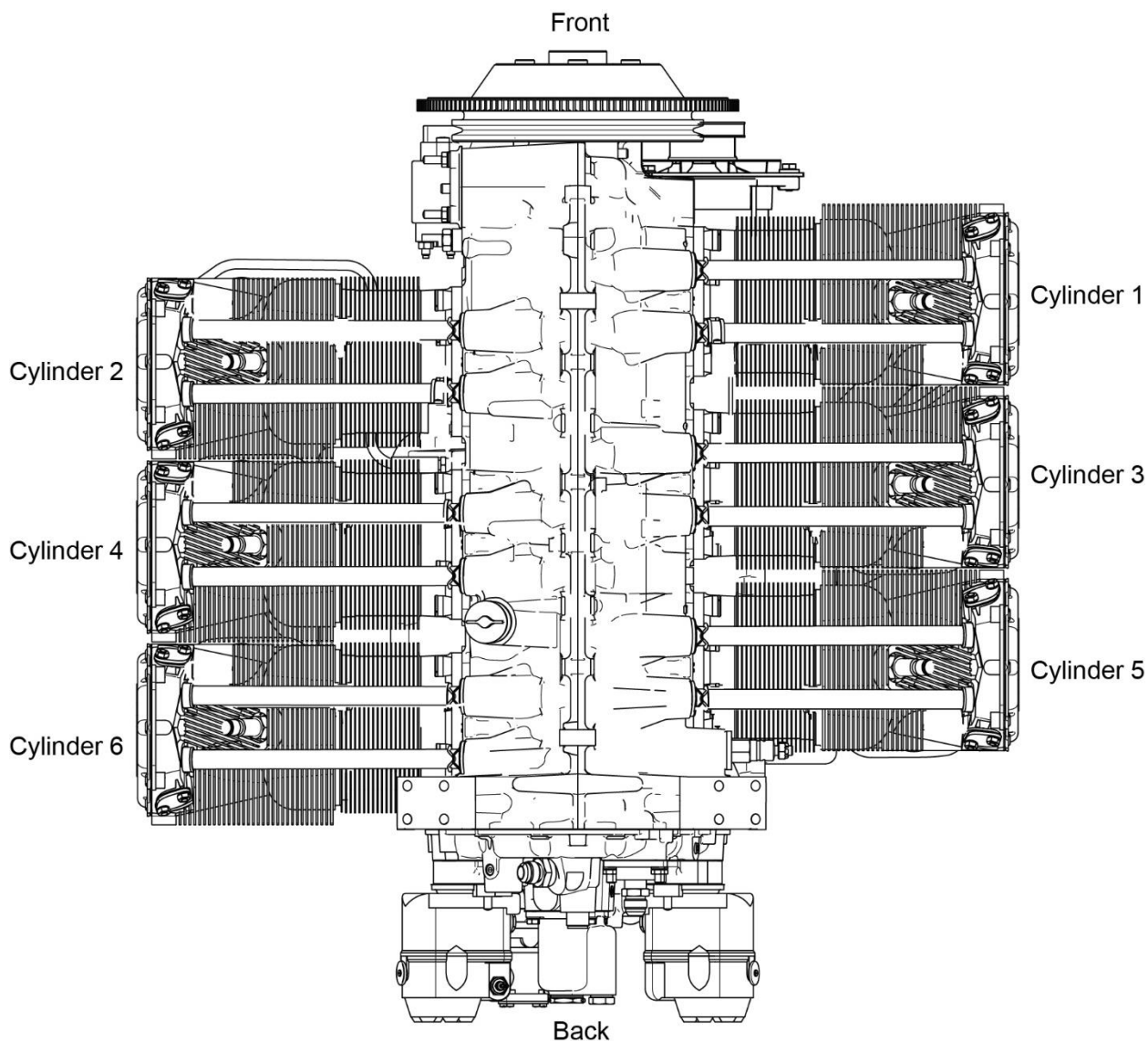
Any reference in this document to the supplier's/part manufacturer's product by name, trademark, part number, or other description is solely for the purpose of identification and does not indicate or infer that Lycoming accepts responsibility for quality control and/or airworthiness of parts, which do not pass through the Lycoming quality control system.

Environmental Compliance

Lycoming is concerned with preserving the environment. Lycoming strongly urges engine owners and repair/overhaul personnel to observe and comply with all federal, state, and local environmental regulations when solvents, paint, fuel, oil, chemicals, or other consumables are used in operating, maintaining, or overhauling an engine component. Please share our concern for and commitment to a clean earth, clean water, and especially clean air for succeeding generations of flyers.

Perspective of References

In this manual, all references to locations of various components will be designated as if viewing the engine from the rear (or anti-propeller) end. The front of the engine is considered to be the propeller end and the oil sump is considered to be on the bottom of the engine. Cylinders are numbered from front to rear with the odd-numbered cylinders on the right-hand side. The firing order for this six-cylinder engine is 1-4-5-2-3-6.



Top View of Engine

How to Order Parts

To order parts from this parts catalog, contact an Authorized Lycoming Distributor with the part number(s), nomenclature, and quantity along with the model and serial number of your engine. Authorized Lycoming Distributors will have up-to-date part number supersedure, pricing, and availability information on parts listed in this parts catalog.

An Oversize and Undersize Parts List is included in the front section of this catalog to aid in ordering parts as necessary during maintenance or overhaul.

To supply any comments, suggestions, or corrections to this parts catalog, go online to the Lycoming.com website on the internet.

NOTE:

Lycoming recommends that owners of this manual sign up for email notification on the Technical Publications page of our website <https://www.lycoming.com/contact/knowledge-base/publications>. By submitting your email address, you will receive notification whenever Lycoming publishes a new or revised technical publication, including any revisions to this parts catalog.

©2025 by Lycoming. "All Rights Reserved." All Lycoming publications are to be considered copyrighted and may not be reproduced without permission of the company.

Abbreviations and Acronyms

| A | |
|----------|------------------------------|
| AR | As Required |
| Assy. | Assembly |
| ATA | Air Transport Association |
| C | |
| Cyl. | Cylinder |
| D | |
| dr. | Drilled |
| H | |
| Hex. | Hexagon |
| I | |
| I.D. | Inside Diameter |
| in. | Inch |
| M | |
| mm | Millimeter |
| N | |
| No. | Number |
| NPT | National Pipe Taper (thread) |
| O | |
| O.D. | Outside Diameter |
| P | |
| P/N | Part Number |
| psi | Pounds per square inch |
| Q | |
| Qty. | Quantity |
| R | |
| RF | Reference |
| S | |
| SB | Service Bulletin |
| SI | Service Instruction |
| SSP | Special Service Publication |
| U | |
| UNF | Unified National Fine |

This page intentionally left blank.

Oversize And Undersize Parts Listing

| PART NO. | DESCRIPTION | OVERSIZE (IN.) | | | | | | | | UNDERSIZE (IN.) | | |
|----------|-------------|--|-------------|-------------|-------------|-------------|-------------|-------------|-------------|-----------------|-------------|-------------|
| | | P02 .002 | P05 .005 | P10 .010 | P15 .015 | P20 .020 | P30 .030 | P40 .040 | P50 .050 | M03 .003 | M06 .006 | M10 .010 |
| 76943 | GUIDE | See latest revision of Service Instruction No. 1256. | | | | | | | | | | |
| 66610 | BUSHING | | X | X | | | | | | | | |
| 66796 | INSERT | | | X | | | | | | | | |
| 69796 | DOWEL | | X | | | | | | | | | |
| 71903-A | BUSHING | See latest revision of Service Instruction No. 1143. | | | | | | | | | | |
| 72057 | SEAT | | X | X | | X | X | | | | | |
| 72058 | SEAT | | | X | | X | X | | | | | |
| 72155-S | BUSHING | | X | X | X | X | | | | | | |
| 73810 | BUSHING | See latest revision of Service Instruction No. 1142. | | | | | | | | | | |
| 16R22126 | GUIDE | See latest revision of Service Instruction No. 1256 | | | | | | | | | | |
| 75656-S | BUSHING | | X | X | X | X | | | | | | |
| 75657-S | BUSHING | | X | X | | X | | | | | | |
| LW-13792 | SEAL | See latest revision of Service Instruction No. 1324. | | | | | | | | | | |
| 18D23135 | BEARING | | | | X | | | | | X | X | X |
| STD-1065 | DOWEL | X | X | X | X | | | | | | | |
| 18A26093 | BEARING | | | | X | | | | | X | X | X |

In addition to the above, studs are available in P03, P07 & P12.

NOTICE: When ordering oversize and undersize parts, be sure to specify the required oversize and undersize dimension along with the proper part number. For example, to order bearing P/N 18D26098 bearing in .003 in. undersize, order P/N 18D26098-M03. Undersize code letter is "M" while oversize code letter is "P". These letters are then followed by the number designating the size in thousandths of an inch.

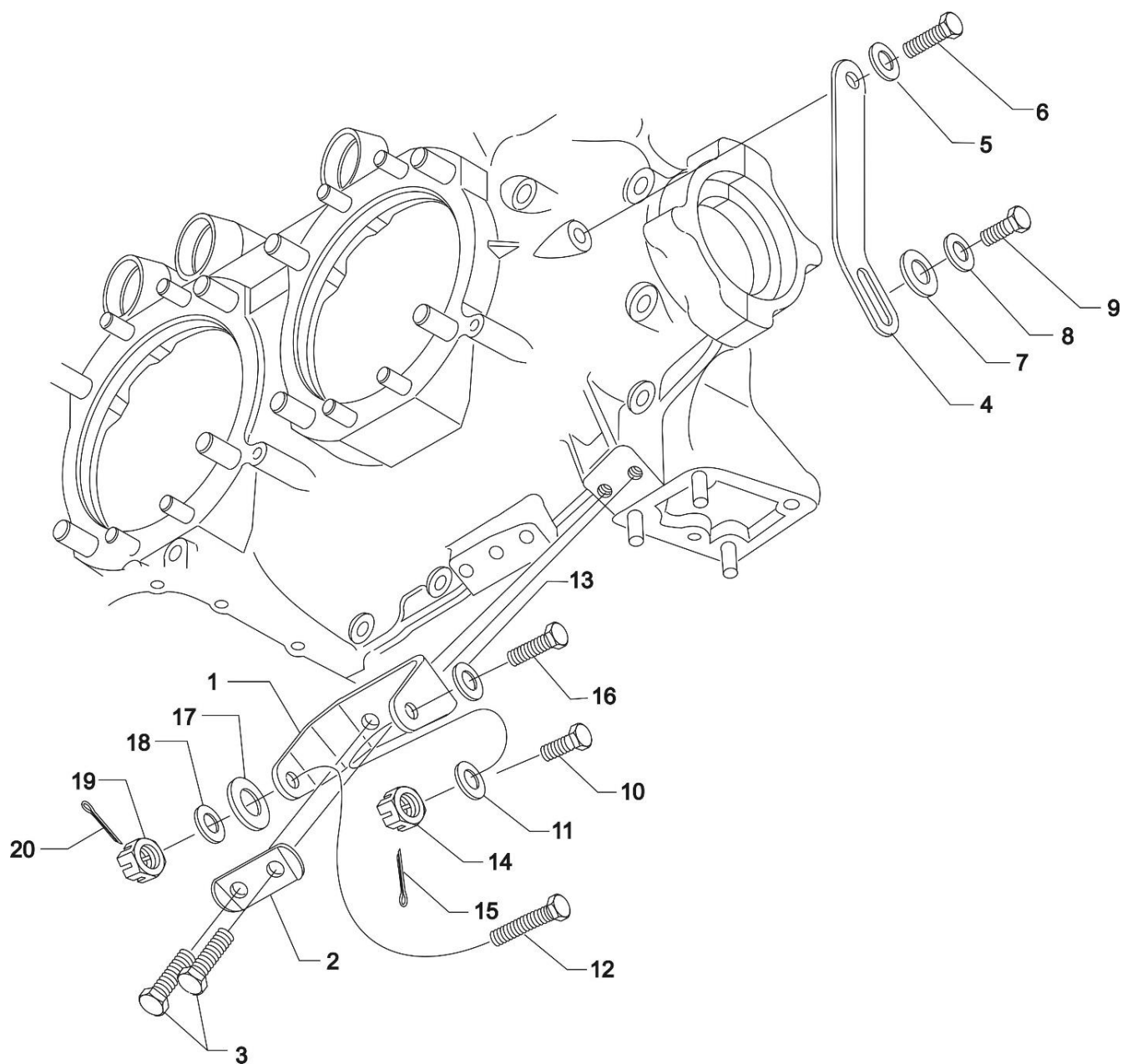


Figure 1
Alternator Attaching Parts

DC GENERATION**FIGURE 1 - ALTERNATOR ATTACHING PARTS**

| Figure Item | Code | Part Number | Description | Units per Assembly |
|--------------------|-------------|--------------------|---|---------------------------|
| 1 | | 07A19474 | BRACKET, Alternator | 1 |
| 2 | | 73383 | LOCKPLATE, 5/16 bolt x 1.00 spacing | 1 |
| 3 | | LW-31-0.94 | BOLT, 5/16-18 x 15/16 long, hex. head | 2 |
| 4 | | 75380 | LINK, Alternator adjusting | 1 |
| 5 | | STD-35 | WASHER, 5/16 plain | 1 |
| 6 | | LW-31H0.75 | BOLT, 5/16-18 x 3/4 long, hex. head, drilled | 1 |
| 7 | | STD-1727 | WASHER, Plain, 3/4 O.D. x 1 1/32 I.D. x 1/8 thick | 1 |
| 8 | | STD-33 | WASHER, 3/8 plain | 3 |
| 9 | | LW-31H0.75 | BOLT, 5/16-18 x 3/4 long, hex. head, drilled | 1 |
| 10 | | LW-31H0.75 | BOLT, 5/16-18 x 3/4 long, hex. head, drilled | 1 |
| 11 | | STD-690 | WASHER, 13/16 O.D. x 25/64 I.D. x 1/16 thick | 1 |
| 12 | | AN6-17 | BOLT, 3/8-24 x 1-61/64 long, hex. head | 1 |
| 13 | | STD-690 | WASHER, 13/16 O.D. x 25/64 I.D. x 1/16 thick | AR |
| 14 | | STD-872 | NUT, 3/8-24 slotted | 1 |
| 15 | | STD-713 | COTTER PIN, 3/32 diameter x 3/4 long | 1 |
| 16 | | AN6-16 | BOLT, 3/8-24 x 1-53/64 long, hex. head, drilled end | 1 |
| 17 | | 76534 | SHIM, 1-1/8 O.D. x 13/32 I.D. x .005 thick | AR |
| 18 | | STD-690 | WASHER, 13/16 O.D. x 25/64 I.D. x 1/16 thick | AR |
| 19 | | STD-872 | NUT, 3/8-24 slotted | 1 |
| 20 | | STD-713 | COTTER PIN, 3/32 diameter x 3/4 long | 1 |

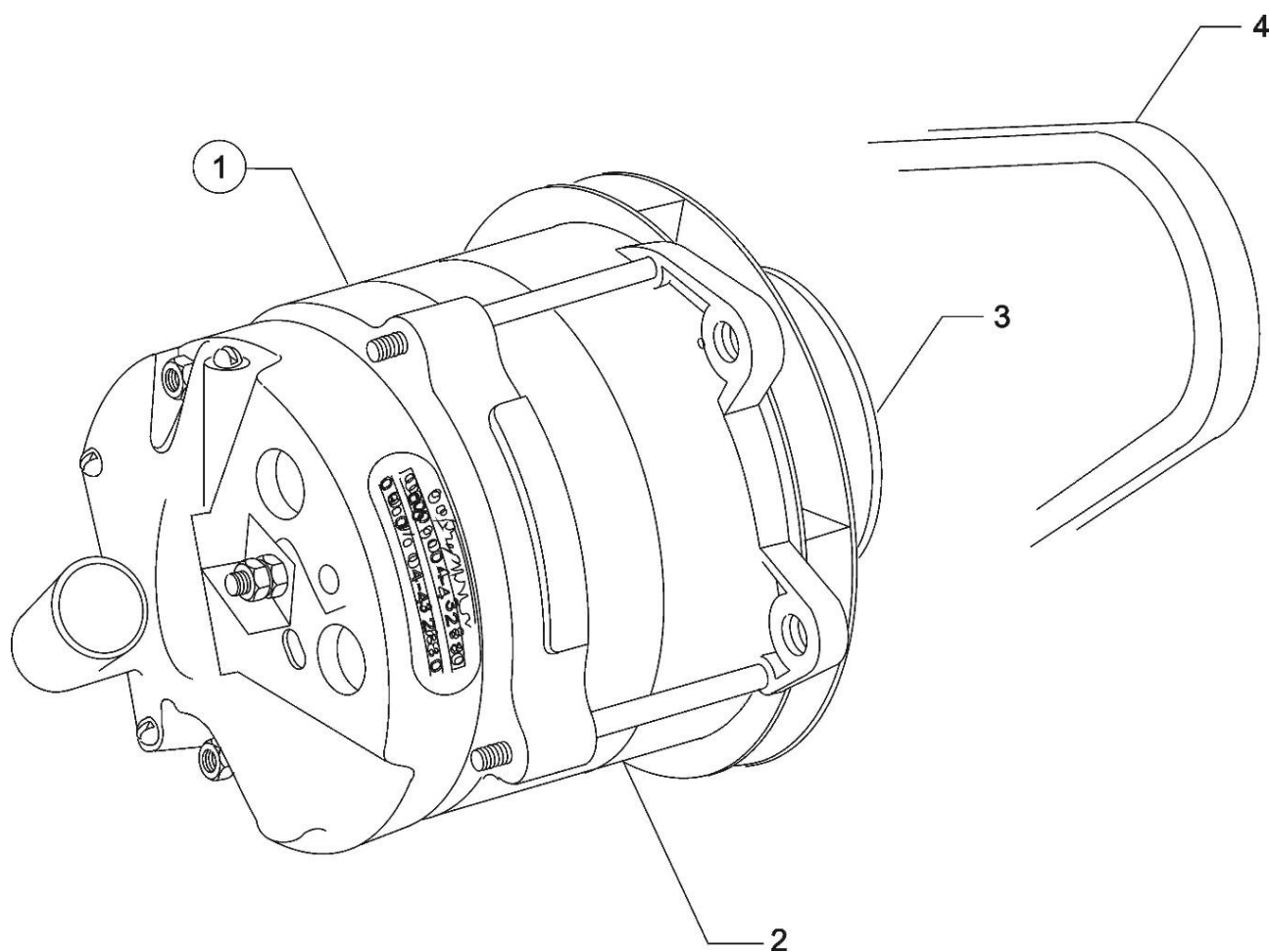


Figure 2
Alternator Assembly and Belt

DC GENERATION**FIGURE 2 - ALTERNATOR ASSEMBLY AND BELT**

| Figure Item | Code | Part Number | Description | Units per Assembly |
|--|-------------|--------------------|---------------------------------------|---------------------------|
| 1 | | 32B19549 | ALTERNATOR ASSEMBLY, 12 volt, 70 amp. | 1 |
| 2 | V | LW-14318 | ALTERNATOR (ALX-8421-LS) | 1 |
| 3 | | 36B19484 | PULLEY, Alternator | 1 |
| 4 | | 37A19773-376 | BELT, Alternator drive, 3/8 wide | 1 |
| V Vendor Prime Manufacturer part <u>NOTE:</u> See latest revision of Lycoming Service Instruction No. 1154 for complete listing of FAA approved starters, generators, alternators, regulators and relays. | | | | |

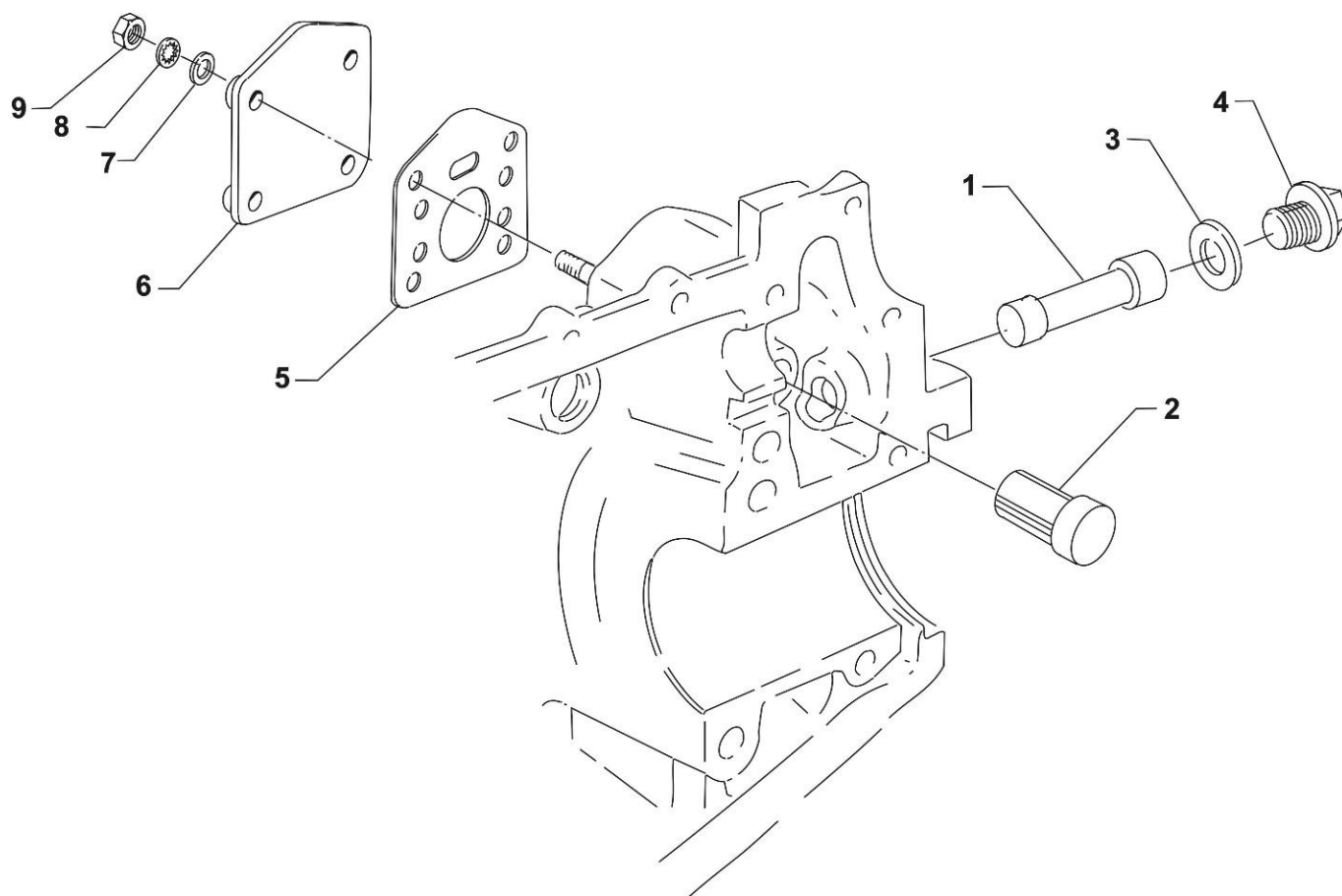


Figure 3
Propeller Governor Plugs and Cover

FRONT SECTION**FIGURE 3 – PROPELLER GOVERNOR PLUGS AND COVER**

| Figure Item | Code | Part Number | Description | Units per Assembly |
|--------------------|-------------|--------------------|--|---------------------------|
| 1 | | 78589 | PLUG, Propeller governor idler shaft | 1 |
| 2 | | 03C21721 | PLUG, Propeller governor drive gear | 1 |
| 3 | | 70455 | GASKET, 25/32 I.D. x 1-1/8 O.D. x 1/32 thick | 1 |
| 4 | | LW-13896 | PLUG, 3/4-16 hex. head | 1 |
| 5 | | 72053 | GASKET, Governor | 1 |
| 6 | | 72378 | COVER, Governor drive | 1 |
| 7 | | STD-35 | WASHER, 5/16 plain | 4 |
| 8 | | STD-475 | WASHER, 5/16 lock, internal teeth | 4 |
| 9 | | STD-1410 | NUT, 5/16-18 plain | 4 |

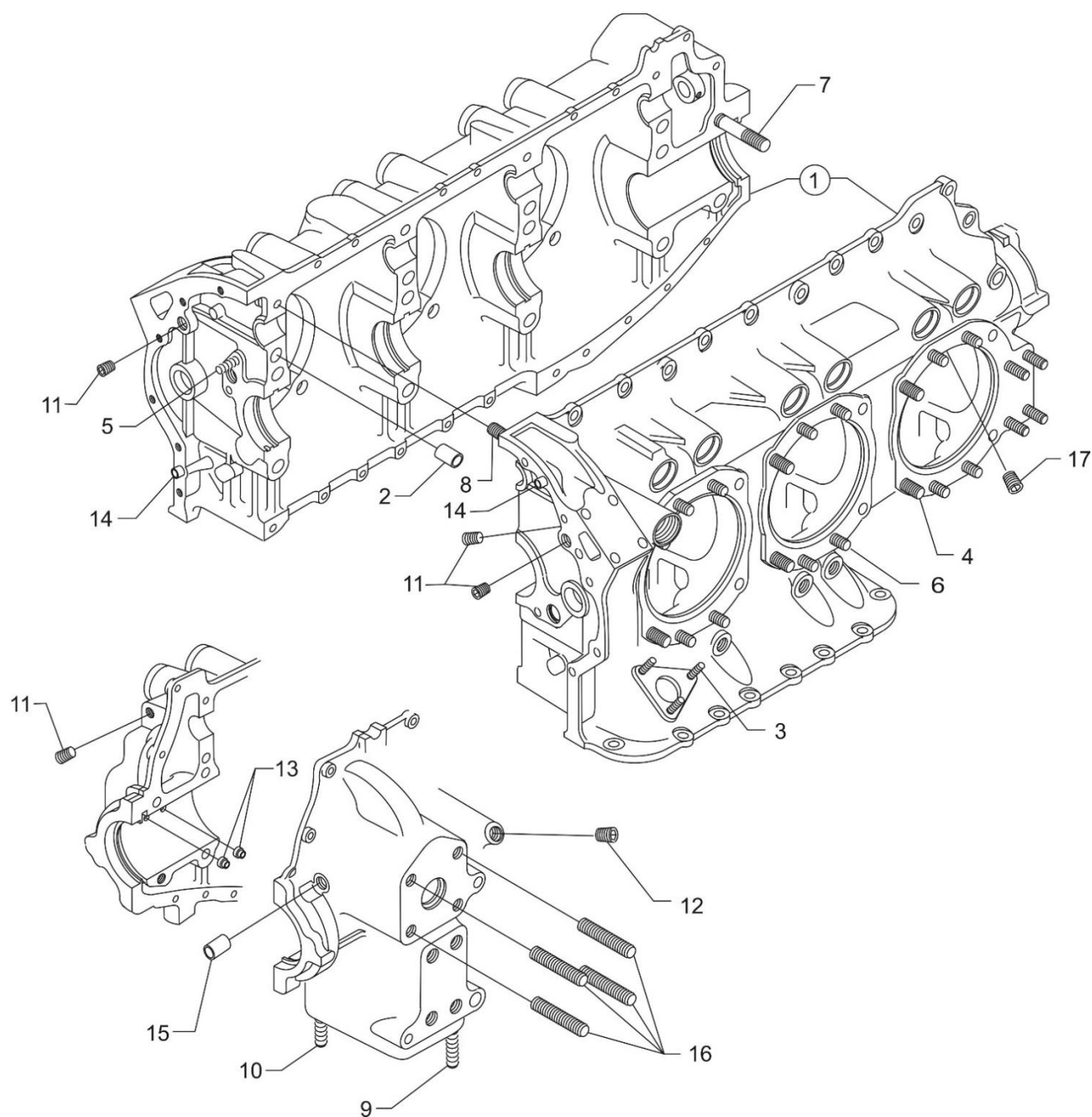


Figure 4
Crankcase Assembly

POWER SECTION

FIGURE 4 - CRANKCASE ASSEMBLY

| Figure Item | Code | Part Number | Description | Units per Assembly |
|---|------|-------------|--|--------------------|
| 1 | * | 11E24004-S1 | CRANKCASE ASSEMBLY (Flat tappet engines) | 1 |
| | * | 11E24104-S1 | CRANKCASE ASSEMBLY (Roller tappet engines) | 1 |
| 2 | | STD-557 | DOWEL, 1/2 diameter x 11/16 long, hollow | 2 |
| 3 | | 10-8 | STUD, No. 10-32 x 1.00 long | 3 |
| 4 | | 50-15 | STUD, 1/2-13 x 1-7/8 long | 12 |
| 5 | | 01A23354 | STUD, 5/16-18 x 1.00 long, drilled | 1 |
| 6 | | 38-13 | STUD, 3/8-16 x 1-5/8 long | 24 |
| 7 | | 38-22 | STUD, 3/8-16 x 2-3/4 long | 1 |
| 8 | | 38D-17 | STUD, 3/8-16 x 2-1/8 long, drilled | 1 |
| 9 | | 31C-12 | STUD, 5/16-18 x 1-1/2 long | 2 |
| 10 | | 31C-13 | STUD, 5/16-18 x 1-5/8 long | 1 |
| 11 | | 1102 | PLUG, 1/8-17 NPT, Allen head | 4 |
| 12 | | STD-1339 | PLUG, 1/16-27 NPT, Allen head | 1 |
| 13 | | 69796 | DOWEL, Crankshaft bearing | 2 |
| 14 | | STD-514 | DOWEL, 5/16 diameter x 1/2 long | 2 |
| 15 | | 72158 | BUSHING, Governor drive idler shaft | 1 |
| 16 | | 31C-14 | STUD, 5/16-18 x 1-3/4 long | 4 |
| 17 | ** | STD-1339 | PLUG, 1/16-27 NPT, Allen head | 6 |
| <p>* - This part is not available as a service item. Refer to Service Kits, Section 7 for applicable Crankcase Assembly and Governor Stud Kit Part Number.</p> <p>** - Assemble in crankcase piston squirt holes.</p> | | | | |

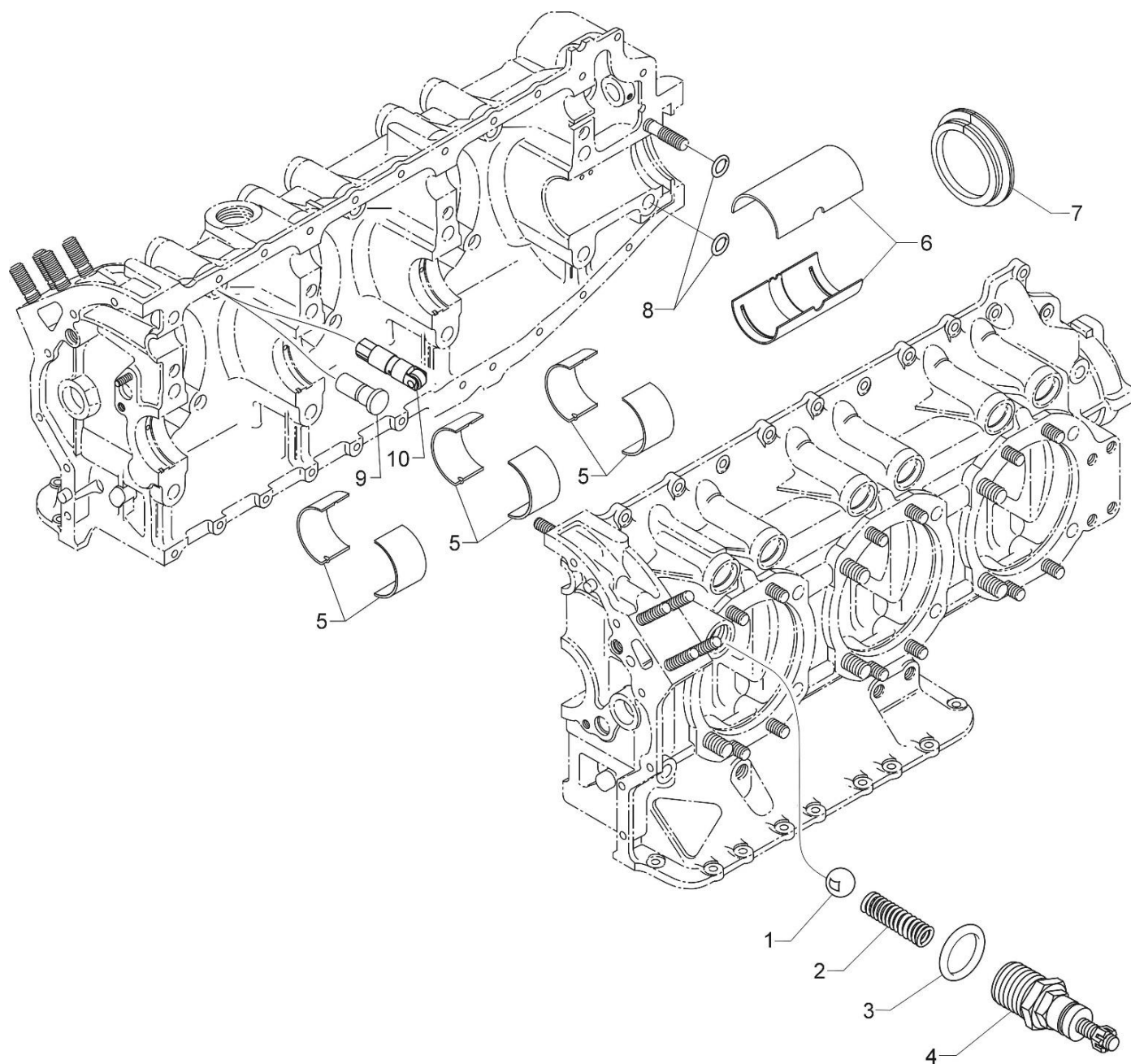


Figure 5
Crankcase Related Parts

POWER SECTION

FIGURE 5 - CRANKCASE RELATED PARTS

| Figure Item | Code | Part Number | Description | Units per Assembly |
|---|------|---------------|---|--------------------|
| 1 | | 1028-B | BALL, 11/16 diameter | 1 |
| 2 | * | 68668 | SPRING, Oil pressure relief valve | 1 |
| | * | 61084 | SPRING, Oil pressure relief valve | 1 |
| | * | 77467 | SPRING, Oil pressure relief valve | 1 |
| | * | LW-11713 | SPRING, Oil pressure relief valve | 1 |
| | * | LW-18085 | SPRING, Oil pressure relief valve | 1 |
| 3 | | 06E19769-1.25 | GASKET, 1-1/4 I.D. x 1-1/2 O.D. x 3/32 annular | 1 |
| 4 | | 77808 | VALVE ASSEMBLY, Oil pressure relief, adjustable | 1 |
| 5 | | 18D23135 | BEARING, Crankshaft | 6 |
| 6 | | 18A26093 | BEARING, Crankshaft, front | 2 |
| 7 | ** | LW-13792 | SEAL, Crankshaft oil, solid | 1 |
| 8 | | 72091 | RING, Oil seal, 23/64 I.D. x 7/64 diameter | 2 |
| 9 | | 15B26588 | BODY, Hydraulic tappet | 12 |
| 10 | | LRT23381 | BODY ASSEMBLY, Hydraulic tappet roller (Roller tappet engines) | 12 |
| <p>* Select spring to give a minimum of three threads exposed on adjusting screw to allow field adjustment. Reference latest revision of SSP-1776, Part I for spring identification.</p> <p>** Refer to the latest revision of Service Instruction No. 1324 for installation.</p> | | | | |

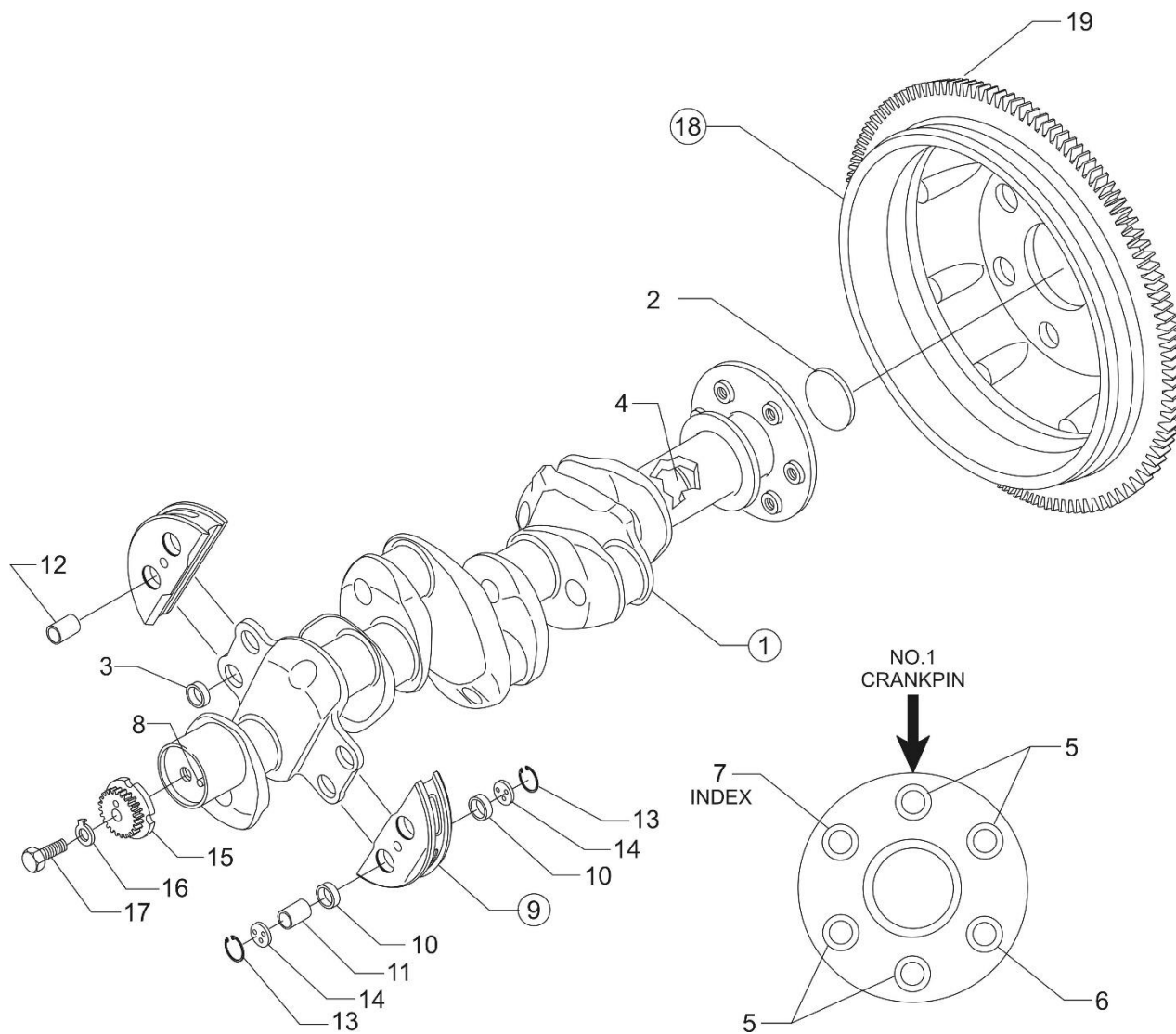


Figure 6
Crankshaft Assembly and Related Parts

POWER SECTION

FIGURE 6 - CRANKSHAFT ASSEMBLY AND RELATED PARTS

| Figure Item | Code | Part Number | Description | Units per Assembly |
|-------------|-------------|-------------|--|--------------------|
| 1 | | 13E27622 | CRANKSHAFT ASSEMBLY | 1 |
| | | 13E47622 | CRANKSHAFT ASSEMBLY | 1 |
| 2 | | STD-1211 | PLUG, 2.00 diameter expansion | 1 |
| 3 | | 73810 | BUSHING, Crankshaft dynamic counterweight | 4 |
| 4 | | 71640 | PLUG, 1-3/8 diameter | 1 |
| 5 | | 75656-S | BUSHING, Propeller flange, long | 4 |
| 6 | | 72155-S | BUSHING, Propeller flange, short | 1 |
| 7 | | 75657-S | BUSHING, Propeller flange, indexing | 1 |
| 8 | | STD-1065 | DOWEL, Stepped, 5/16 x 1/4 diameter x 35/64 long | 1 |
| 9 | * | 14U22539 | COUNTERWEIGHT ASSEMBLY | 2 |
| 10 | | 71903-A | BUSHING, Dynamic counterweight | 8 |
| 11 | * | 14W22647 | ROLLER, Dynamic counterweight, 4.81 order | 2 |
| 12 | * | 70416 | ROLLER, Dynamic counterweight, 6.3 order | 2 |
| 13 | | LW-14820 | RING, Internal retaining | 8 |
| 14 | | 71907 | WASHER, Dynamic counterweight | 8 |
| 15 | SB** | 13S19647 | GEAR, Crankshaft | 1 |
| 16 | | LW-18638 | LOCKPLATE, Crankshaft gear | 1 |
| 17 | | STD-2247 | BOLT, 5/16-24 x 1-3/4 long, hex. head | 1 |
| 18 | | 31M21951 | SUPPORT ASSEMBLY, Starter ring gear, 12/14 pitch | 1 |
| | | 31M22972 | SUPPORT ASSEMBLY, Starter ring gear | 1 |
| 19 | | 72566 | GEAR, Starter ring | 1 |

SB Referencing Service Bulletin

* Refer to the latest revision of Service Instruction No. 1012 for proper counterweight and roller location.

** Refer to the latest revision of Service Bulletin No. 475 for proper installation.

NOTE: Refer to Service Kit Section for Crankshaft and Counterweight Assembly kit.

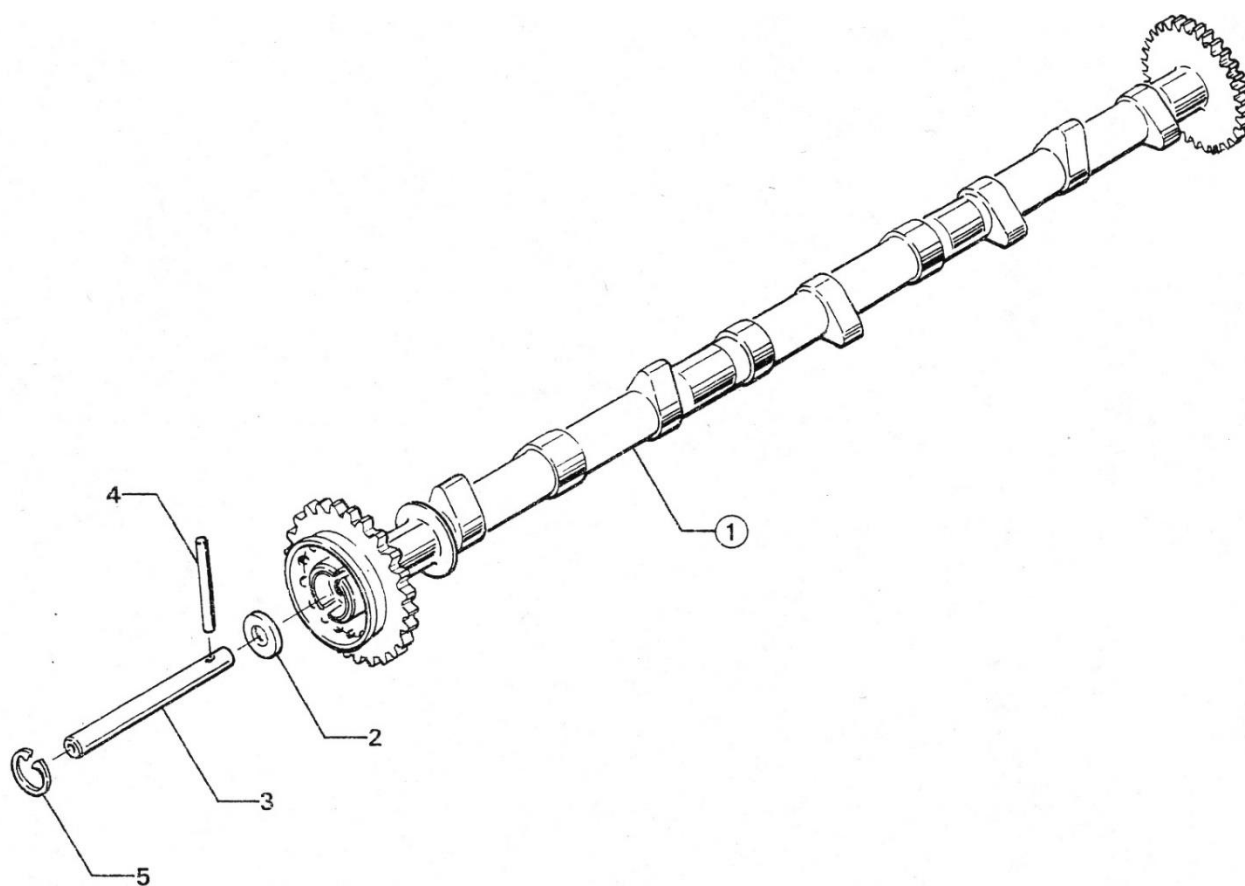


Figure 7
Camshaft and Related Parts

POWER SECTION**FIGURE 7 – CAMSHAFT AND RELATED PARTS**

| Figure Item | Code | Part Number | Description | Units per Assembly |
|--------------------|-------------|--------------------|--|---------------------------|
| 1 | | LW-19340 | CAMSHAFT ASSEMBLY (Flat tappet engines) | 1 |
| | | 15N23374 | CAMSHAFT ASSEMBLY, Roller lifter (Roller tappet engines) | 1 |
| 2 | | 76118 | SPACER, Tachometer shaft centering | 1 |
| 3 | | 76155 | SHAFT ASSEMBLY, Tachometer | 1 |
| 4 | | LW-18667 | PIN, 3/16 diameter x 2-21/64 long | 1 |
| 5 | | STD-2231 | RING, Internal retaining | 1 |

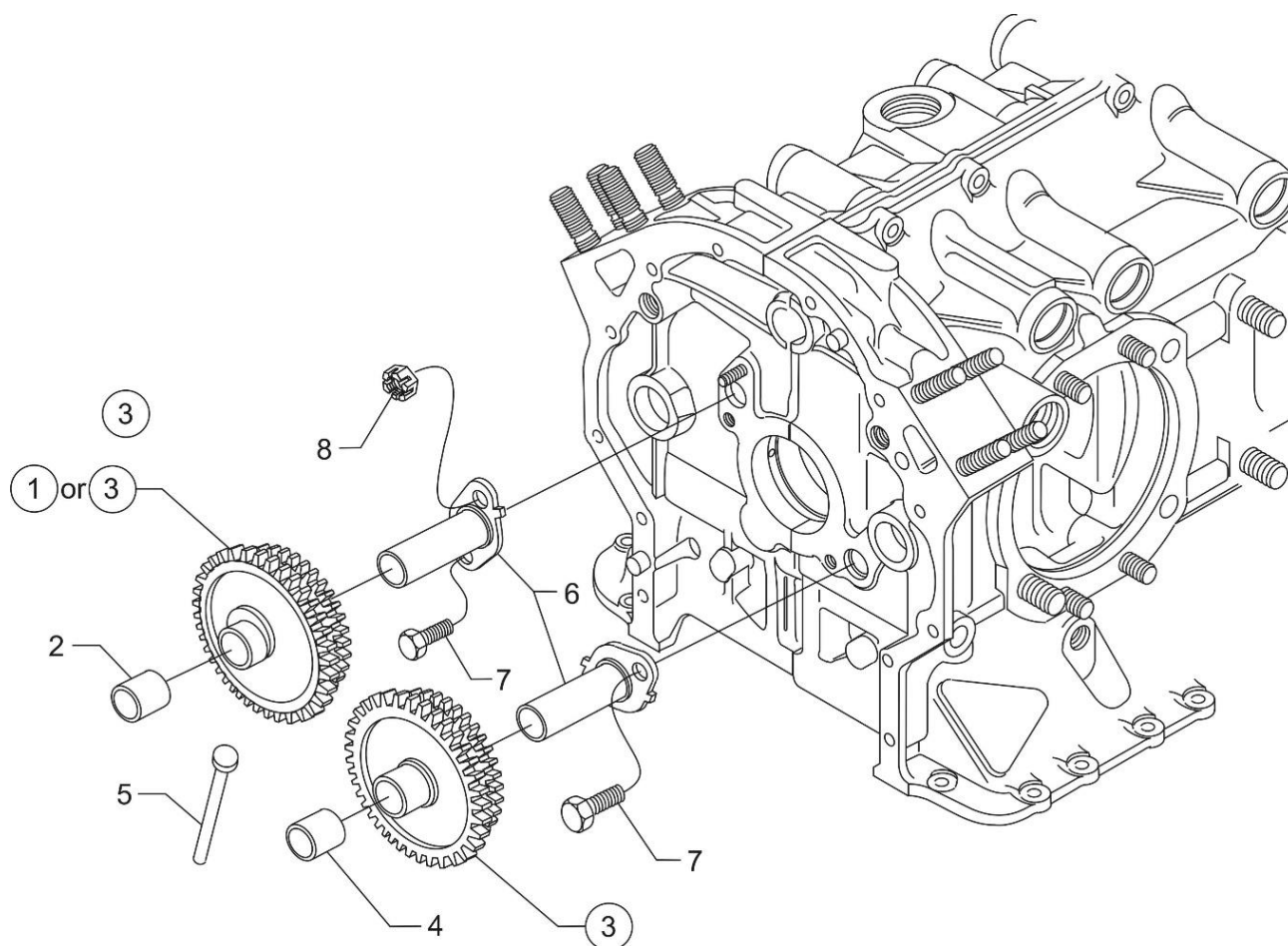


Figure 8
Crankshaft Idler Gears

POWER SECTION**FIGURE 8 – CRANKSHAFT IDLER GEARS**

| Figure Item | Code | Part Number | Description | Units per Assembly |
|--------------------|-------------|--------------------|--|---------------------------|
| 1 | | 71652 | GEAR ASSEMBLY, Crankshaft idler | 1 |
| 2 | | 67530 | BUSHING, Crankshaft idler gear | 1 |
| 3 | | 71668 | GEAR ASSEMBLY, Crankshaft idler, plain | 3 |
| 4 | | 67530 | BUSHING, Crankshaft idler gear | 1 |
| 5 | | 23D26777 | PLUNGER, Fuel pump, long | 1 |
| 6 | | LW-13795 | SHAFT, Crankshaft idler gear | 2 |
| 7 | | LW-31H0.88 | BOLT, 5/16-18 x 7/8 long, hex. head, drilled | 3 |
| 8 | | STD-2168 | NUT, 5/16-18 NC-3 slotted shear | 1 |

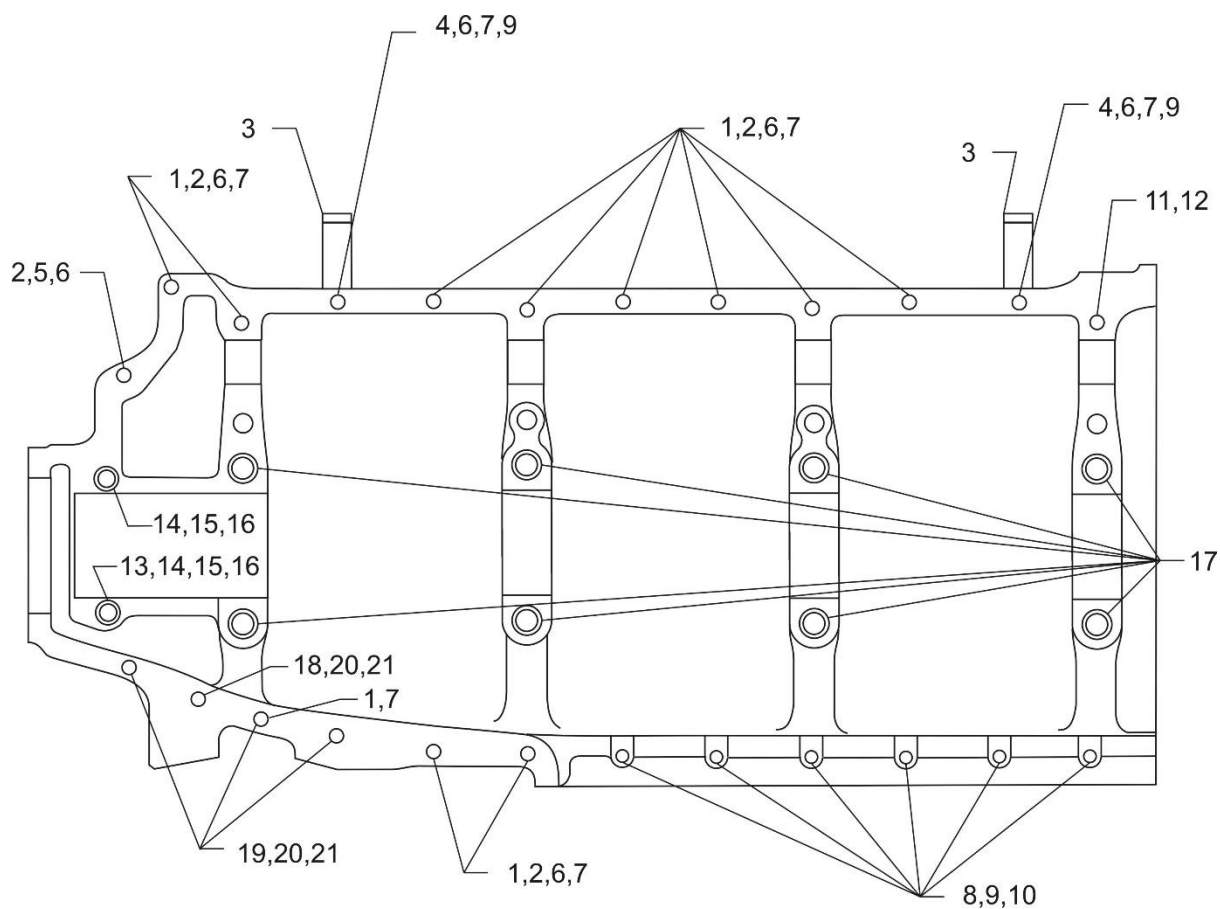


Figure 9
Crankcase Attaching Parts

POWER SECTION

FIGURE 9 - CRANKCASE ATTACHING PARTS

| Figure Item | Code | Part Number | Description | Units per Assembly |
|-----------------------|-----------|-------------|---|--------------------|
| 1 | | LW-25-1.50 | BOLT, 1/4-20 x 1-1/2 long, hex. head | 11 |
| 2 | | STD-8 | WASHER, 1/4 plain | 24 |
| 3 | | 60803 | STRAP, Lifting | 2 |
| 4 | | LW-25-1.75 | BOLT, 1/4-20 x 1-3/4 long, hex. head | 2 |
| 5 | | LW-25-1.13 | BOLT, 1/4-20 x 1-1/8 long, hex. head | 1 |
| 6 | | STD-160 | WASHER, 1/4 lock, internal teeth | 13 |
| 7 | | STD-1411 | NUT, 1/4-20 plain | 12 |
| 8 | | LW-25S1.50 | BOLT, 1/4-20 x 1-1/2 long, hex. head, drilled | 6 |
| 9 | AR | STD-8 | WASHER, 1/4 plain | AR |
| 10 | | STD-2249 | NUT, 1/4-20 slotted shear | 6 |
| 11 | | STD-33 | WASHER, 3/8 plain | 1 |
| 12 | | STD-872 | NUT, 3/8-24 slotted | 1 |
| 13 | | AN6-34A | BOLT, 3/8-24 x 3-37/64 long, hex. head | 1 |
| 14 | | STD-33 | WASHER, 3/8 plain | 3 |
| 15 | | STD-678 | WASHER, 3/8 lock, internal teeth | 2 |
| 16 | | STD-596 | NUT, 3/8-24 plain | 2 |
| 17 | | 76220 | STUD, 1/2-20 x 10-45/64 long | 8 |
| 18 | | LW-31-2.75 | BOLT, 5/16-18 x 2-3/4 long, hex. head | 1 |
| 19 | | LW-31-1.16 | BOLT, 5/16-18 x 1-5/32 long, hex. head | 3 |
| 20 | | STD-35 | WASHER, 5/16 plain | 4 |
| 21 | | STD-475 | WASHER, 5/16 lock, internal teeth | 4 |
| AR as required | | | | |

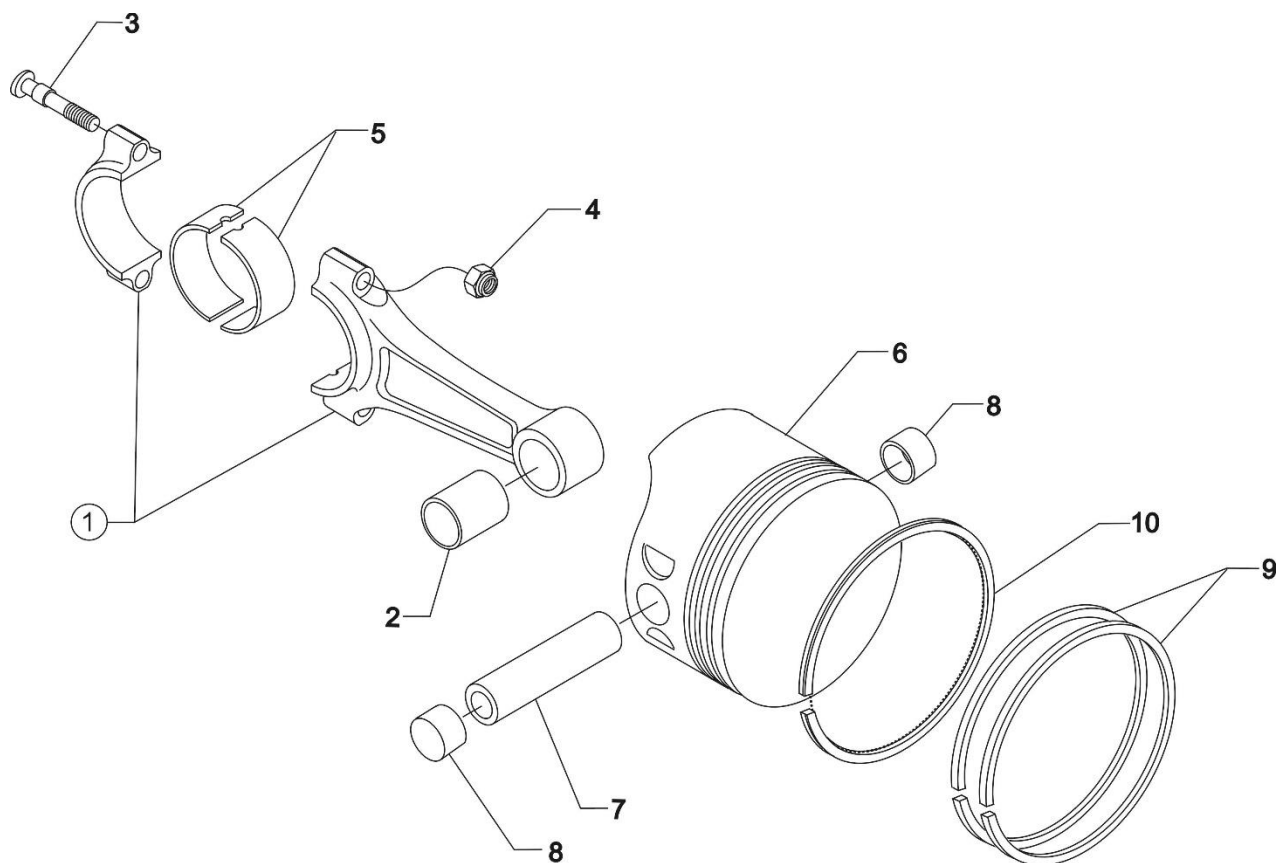


Figure 10
Connecting Rods, Pistons and Ring Assemblies

CYLINDER SECTION

FIGURE 10 - CONNECTING RODS, PISTONS AND RING ASSEMBLIES

| Figure Item | Code | Part Number | Description | Units per Assembly |
|---|----------|-------------|--|--------------------|
| 1 | | LW-11750 | CONNECTING ROD ASSEMBLY | 6 |
| 2 | | 01K28983 | BUSHING, Connecting rod, upper | 6 |
| 3 | P | 14S23890 | BOLT, Connecting rod | 12 |
| | * | 75061 | BOLT, Connecting rod | 12 |
| 4 | | LW-12186 | NUT, Connecting rod bolt | 12 |
| 5 | | 18M26105 | BEARING, Connecting rod | 12 |
| 6 | | 14D23912 | PISTON, Compression ratio 8.50:1 | 6 |
| 7 | ** | LW-14078 | PIN, Piston | 6 |
| 8 | | 72198 | PLUG, Piston pin | 12 |
| 9 | | 74241 | RING, Piston, top compression | 12 |
| 10 | | 14H29884 | RING, Piston, oil regulating (expander type) | 6 |
| <p>P Lycoming proprietary part. Listed for reference purpose only, cannot be purchased.</p> <p>* Service use only.</p> <p>** Refer to the latest revision of Service Instruction No. 1267.</p> | | | | |

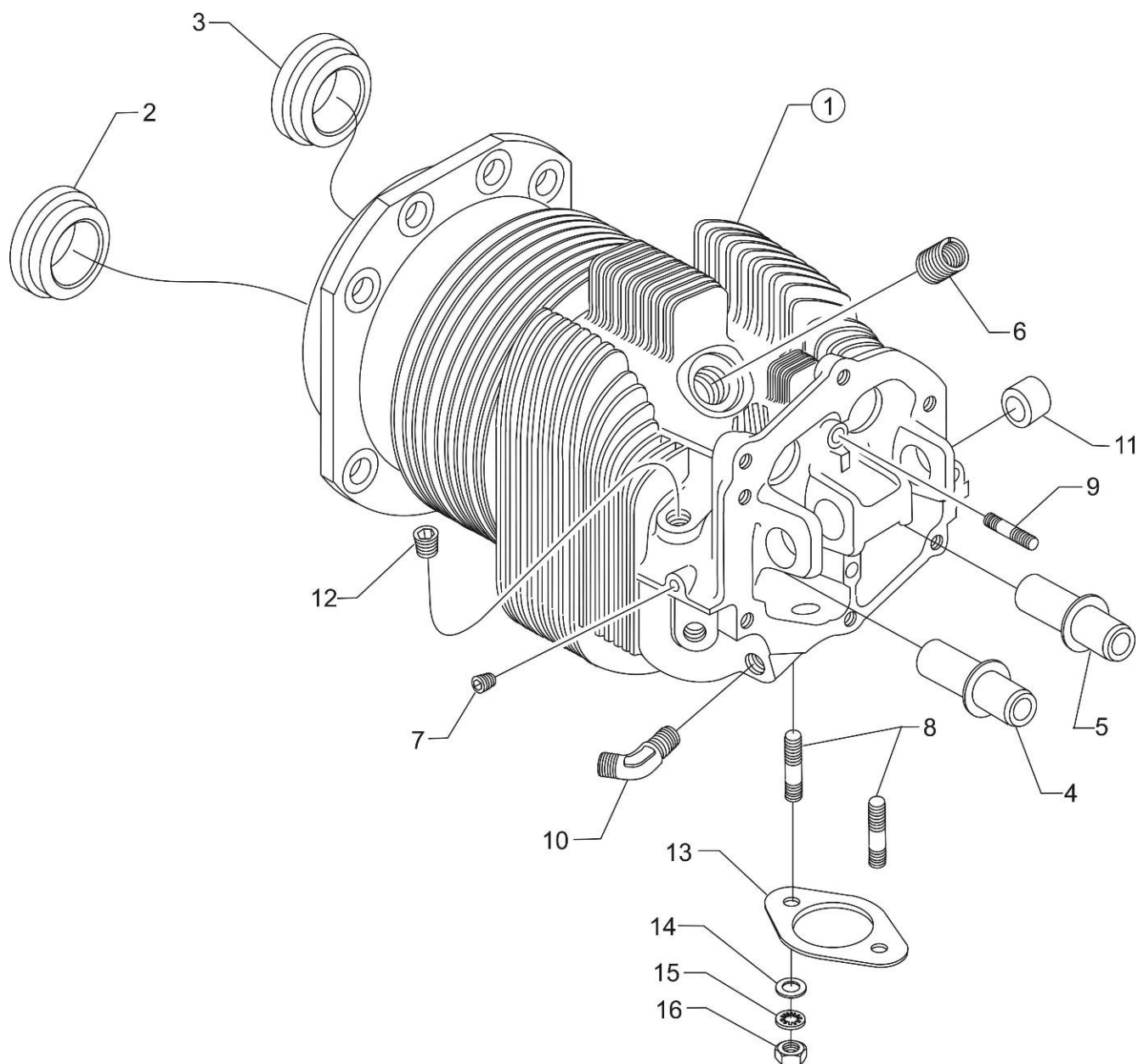


Figure 11
Cylinder Assembly

CYLINDER SECTION

FIGURE 11 - CYLINDER ASSEMBLY

| Figure Item | Code | Part Number | Description | Units per Assembly |
|--|------|-------------|--|--------------------|
| 1 | | 16A30080-03 | CYLINDER ASSEMBLY | 6 |
| 2 | | 72057 | SEAT, Intake valve | 6 |
| 3 | | 72058 | SEAT, Exhaust valve | 6 |
| 4 | * | 76943 | GUIDE, Intake valve, flanged | 6 |
| 5 | * | 16R22126 | GUIDE, Exhaust valve, flanged | 6 |
| 6 | | 66796 | INSERT, Spark plug, 18-1.5 MM | 12 |
| 7 | | STD-1353 | INSERT, No. 10-24 Heli-coil, taper pipe thread | 6 |
| 8 | | 31C-12 | STUD, 5/16-18 x 1-1/2 long | 12 |
| 9 | | 25C-8 | STUD, 1/4-20 x 1.00 long | 6 |
| 10 | | MS20823-6D | ELBOW, 3/8 flared tube, 45° | 6 |
| 11 | | 66610 | BUSHING, Rocker shaft | 24 |
| 12 | ** | 1102 | PLUG, 1/8-27 NPT, Allen head | 6 |
| 13 | | 77611 | GASKET, Exhaust flange | 6 |
| 14 | | STD-35 | WASHER, 5/16 plain | 12 |
| 15 | | STD-475 | WASHER, 5/16 lock, internal teeth | 12 |
| 16 | | STD-1410 | NUT, 5/16-18 plain | 12 |
| <p>* Refer to the latest revision of Service Instruction No. 1256 for service valve guides.</p> <p>** Assemble in cylinder head.</p> | | | | |

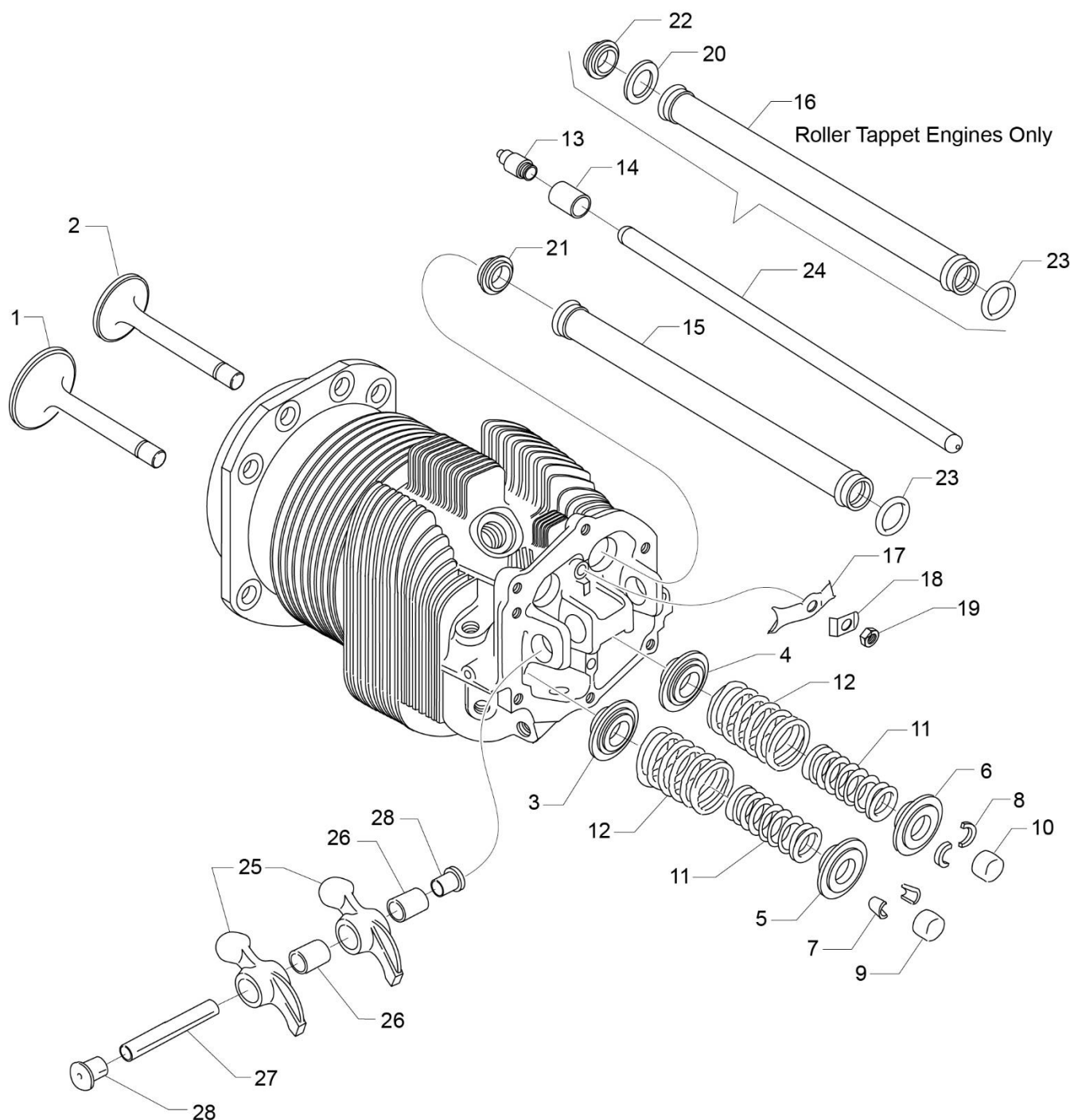


Figure 12
Valve Assembly and Cylinder Related Parts

CYLINDER SECTION

FIGURE 12 – VALVE ASSEMBLY AND CYLINDER RELATED PARTS

| Figure Item | Code | Part Number | Description | Units per Assembly |
|-------------|------|-------------|--|--------------------|
| 1 | | 17A29467 | VALVE, Intake, Rotator type | 6 |
| 2 | | 17B23936 | VALVE, Exhaust | 6 |
| 3 | | 65441 | SEAT, Valve spring, lower intake | 6 |
| 4 | | LW-13323 | SEAT, Valve spring, lower exhaust | 6 |
| 5 | | 69532 | SEAT, Valve spring, upper intake | 6 |
| 6 | | LW-16475 | SEAT, Valve spring, upper exhaust | 6 |
| 7 | | 72050 | KEY, Valve, intake | 12 |
| 8 | | 17C21191 | KEY, Valve, exhaust | 12 |
| 9 | | 62388 | CAP, Valve stem | 6 |
| 10 | | 17C19386 | CAP, Valve stem, exhaust | 6 |
| 11 | | 17D29055 | SPRING, Valve, auxiliary | 12 |
| 12 | | 17D29060 | SPRING, Valve, outer | 12 |
| 13 | | 15B26066 | PLUNGER ASSEMBLY, Hydraulic tappet | 12 |
| 14 | | 15B21319 | SOCKET, Push rod, hydraulic tappet | 12 |
| 15 | | LW-11485 | SHROUD TUBE ASSEMBLY | 12 |
| 16 | ◆ | 15G23461 | SHROUD TUBE ASSEMBLY | 12 |
| 17 | | LW-14995 | SPRING, Shroud tube | 6 |
| 18 | | LW-12272 | LOCKPLATE, Shroud tube | 6 |
| 19 | | STD-1411 | NUT, 1/4-20 plain | 6 |
| 20 | ◆ | 01L23459 | WASHER, 25/32 I.D. x 1-3/8 O.D. x 1/32 thick | 12 |
| 21 | | LW-18661 | SEAL, Shroud tube | 12 |
| 22 | ◆ | 06A23493 | SEAL, Shroud tube | 12 |
| 23 | ■ | 70310 | SEAL, Shroud tube | 12 |

(Continued on next page)

FIGURE 12 – VALVE ASSEMBLY AND RELATED PARTS (Cont.)

| Figure Item | Code | Part Number | Description | Units per Assembly |
|--|------|-------------|---|--------------------|
| 24 | *♦ | 15F28835-28 | ROD ASSEMBLY, Push (A total of 12 required) | AR |
| | *♦ | 15F28835-29 | ROD ASSEMBLY, Push (A total of 12 required) | AR |
| | *♦ | 15F28835-30 | ROD ASSEMBLY, Push (A total of 12 required) | AR |
| | *♦ | 15F28835-31 | ROD ASSEMBLY, Push (A total of 12 required) | AR |
| | *♦ | 15F28835-32 | ROD ASSEMBLY, Push (A total of 12 required) | AR |
| | *♦ | 15F28835-33 | ROD ASSEMBLY, Push (A total of 12 required) | AR |
| | *† | 15F28835-34 | ROD ASSEMBLY, Push (A total of 12 required) | AR |
| | * | 15F28835-35 | ROD ASSEMBLY, Push (A total of 12 required) | AR |
| | * | 15F28835-36 | ROD ASSEMBLY, Push (A total of 12 required) | AR |
| | * | 15F28835-37 | ROD ASSEMBLY, Push (A total of 12 required) | AR |
| 25 | ** | 17F19357 | ROCKER ASSEMBLY, Valve | 12 |
| 26 | | 74637 | BUSHING, Valve rocker | 12 |
| 27 | | LW-13790 | SHAFT, Valve rocker | 6 |
| 28 | | LW-12892 | THRUST BUTTON, Rocker shaft | 12 |
| <p>* - Refer to the latest revision of Service Instruction No. 1060 for complete push rod application.</p> <p>** - Due to the size of the area where the part number is stamped, the last five digits may be all that is shown (19357).</p> <p>♦ - These parts are used on roller tappet engines only.</p> <p>† - This push rod can be used on both roller tappet engines and flat tappet engines.</p> <p>■ - This seal needs to be installed on both roller tappet engines and flat tappet engines.</p> | | | | |

This page intentionally left blank.

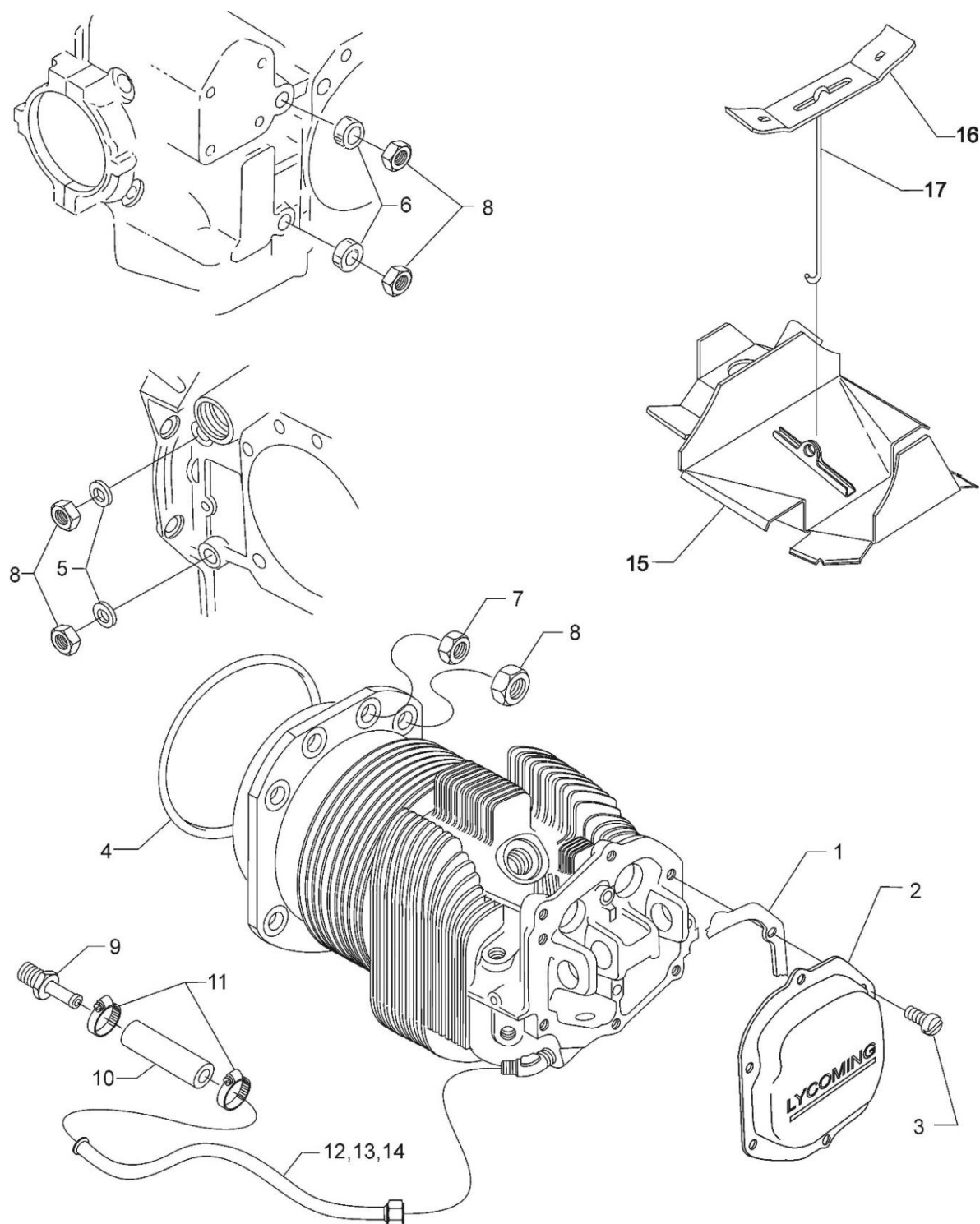


Figure 13
Cylinder Head Drain Tubes,
Inter-Cylinder Cooling Baffles and Related Parts

CYLINDER SECTION

**FIGURE 13 - CYLINDER HEAD DRAIN TUBES,
INTER-CYLINDER COOLING BAFFLES AND RELATED PARTS**

| Figure Item | Code | Part Number | Description | Units per Assembly |
|-------------|------|---------------|--|--------------------|
| 1 | | 06B26669 | GASKET, Rocker box cover (Silicone) | 6 |
| 2 | | 61247 | COVER, Rocker box | 6 |
| 3 | | STD-1925 | SCREW, 1/4-20 x 5/8 long, pan. head | 36 |
| 4 | | 71481 | RING, Oil seal, 3/32 diameter x 4-27/32 I.D. | 6 |
| 5 | | 77906 | SPACER, 33/64 I.D. x 7/8 O.D. x 1/8 thick | 2 |
| 6 | | 74887 | SPACER, 33/64 I.D. x 7/8 O.D. x 3/8 thick | 2 |
| 7 | | 383-B | NUT, 3/8-24 plain | 24 |
| 8 | | STD-2090 | NUT, 1/2-20 plain | 28 |
| 9 | | STD-684 | NIPPLE, Straight, 3/8 I.D. hose | 6 |
| 10 | | STD-1821 | HOSE, 3/8 I.D. x 2-1/2 long | 6 |
| 11 | | LW-15592-5-05 | CLAMP, Hose | 12 |
| 12 | | 68759 | TUBE ASSEMBLY, Cylinder head oil drain, cylinder no. 1 | 1 |
| 13 | | 68760 | TUBE ASSEMBLY, Cylinder head oil drain, cylinder no. 2 | 1 |
| 14 | | 68761 | TUBE ASSEMBLY, Cylinder head oil drain, cylinders no. 3, 4, 5, 6 | 4 |
| 15 | | LW-15839 | BAFFLE ASSEMBLY, Inter-cylinder | 4 |
| 16 | | 71611 | RETAINER, Inter-cylinder baffle | 4 |
| 17 | | 71629 | HOOK, Inter-cylinder baffle | 4 |

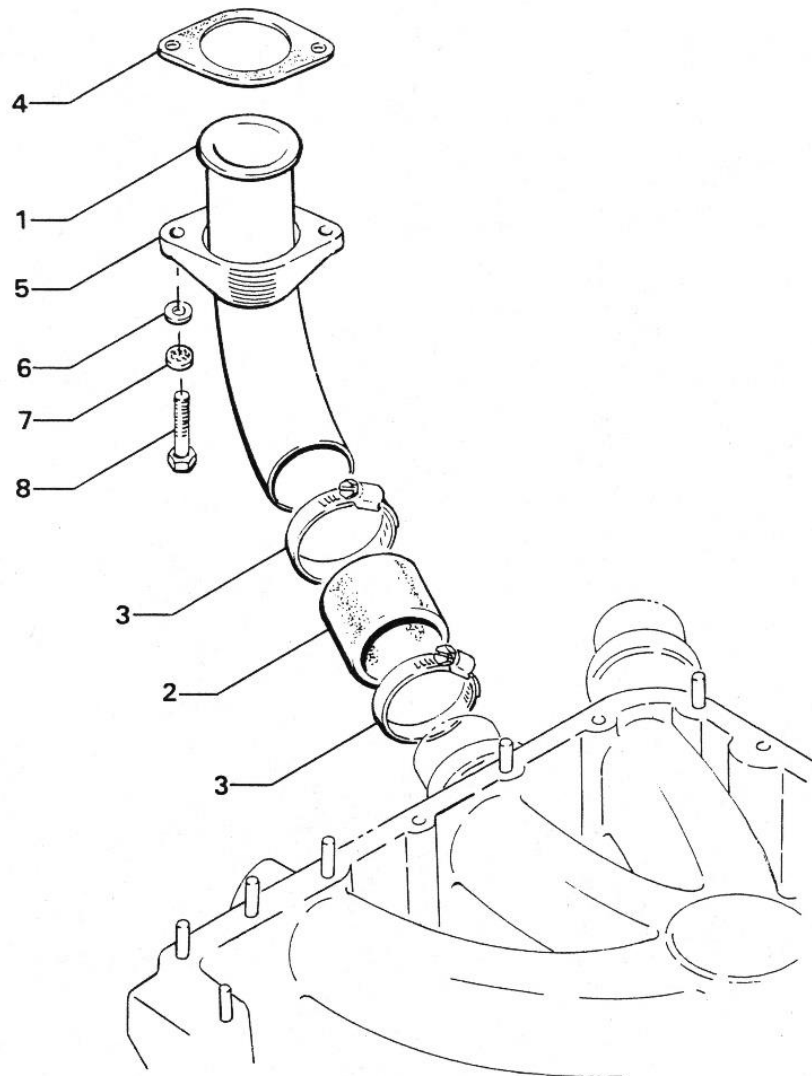


Figure 14
Intake Pipes and Attaching Parts

CYLINDER SECTION**FIGURE 14 – INTAKE PIPES AND ATTACHING PARTS**

| Figure Item | Code | Part Number | Description | Units per Assembly |
|--------------------|-------------|--------------------|---|---------------------------|
| 1 | | 70485 | PIPE, Intake | 6 |
| 2 | | 69603 | HOSE, 1-3/4 I.D. x 2-3/16 O.D. x 1-3/4 long | 6 |
| 3 | | LW-15592-8-28 | CLAMP, Hose | 12 |
| 4 | | 71973 | GASKET, 2 bolt flange, 1-7/8 I.D. | 6 |
| 5 | | 73346 | FLANGE, Intake pipe, upper | 6 |
| 6 | | STD-8 | WASHER, 1/4 plain | 12 |
| 7 | | STD-160 | WASHER, 1/4 lock, internal teeth | 12 |
| 8 | | LW-25-1.25 | BOLT, 1/4-20 x 1-1/4 long, hex. head | 12 |

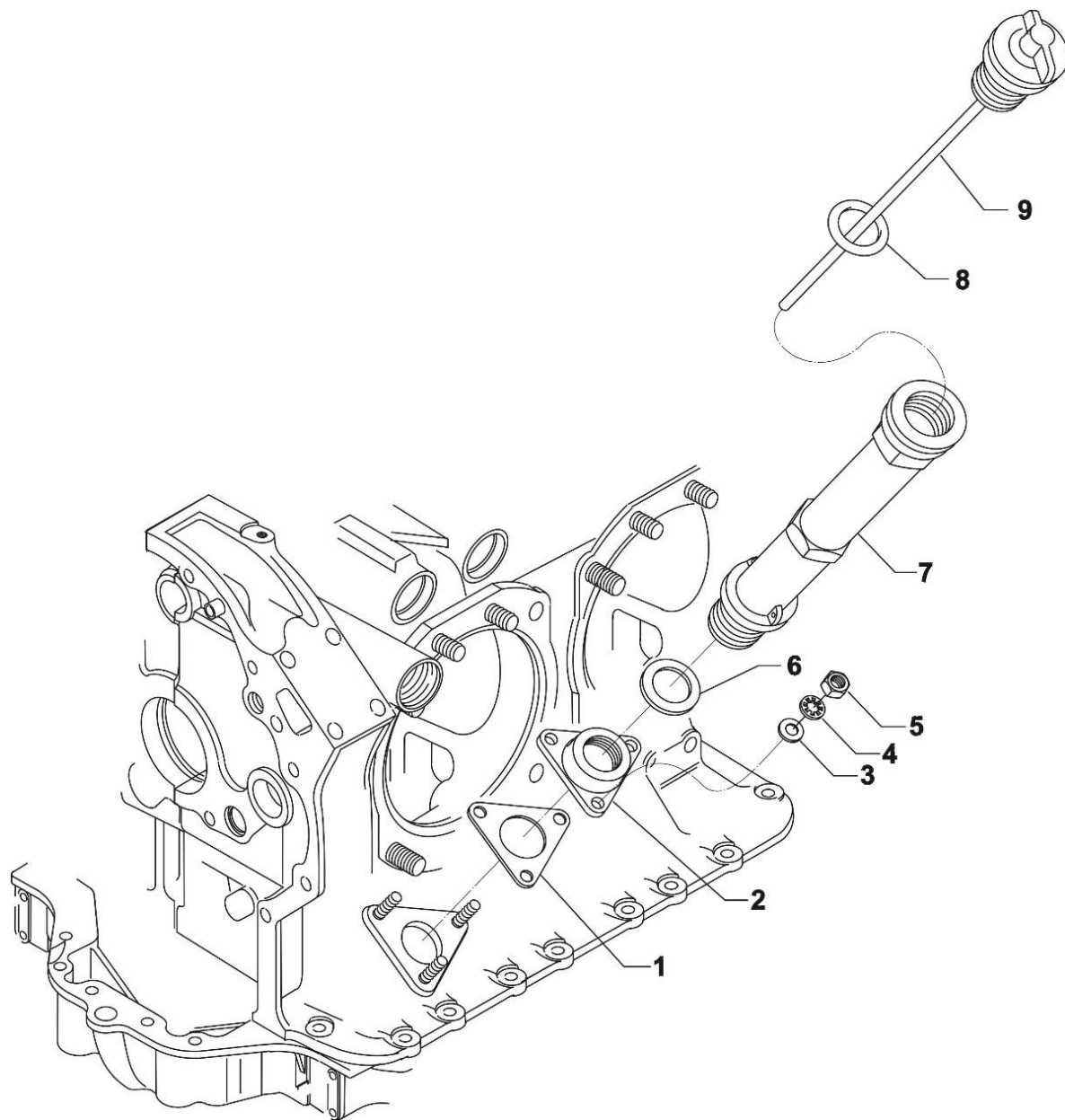


Figure 15
Oil Level Gage Assembly

LUBRICATION SYSTEM**FIGURE 15 – OIL LEVEL GAGE ASSEMBLY**

| Figure Item | Code | Part Number | Description | Units per Assembly |
|--------------------|-------------|--------------------|------------------------------|---------------------------|
| 1 | | LW-18481 | GASKET, Oil filler adapter | 1 |
| 2 | | LW-18482 | ADAPTER, Oil filler tube | 1 |
| 3 | | STD-28 | WASHER, No. 10 plain | 3 |
| 4 | | STD-251 | WASHER, No. 10 internal lock | 3 |
| 5 | | STD-63 | NUT, No. 10-32 plain | 3 |
| 6 | | 72059 | GASKET, Oil level gage | 1 |
| 7 | | LW-15970 | TUBE, Oil level gage, short | 1 |
| 8 | | 74068 | O-RING, Oil level gage | 1 |
| 9 | | LW-16783-17 | GAGE ASSEMBLY, Oil level | 1 |

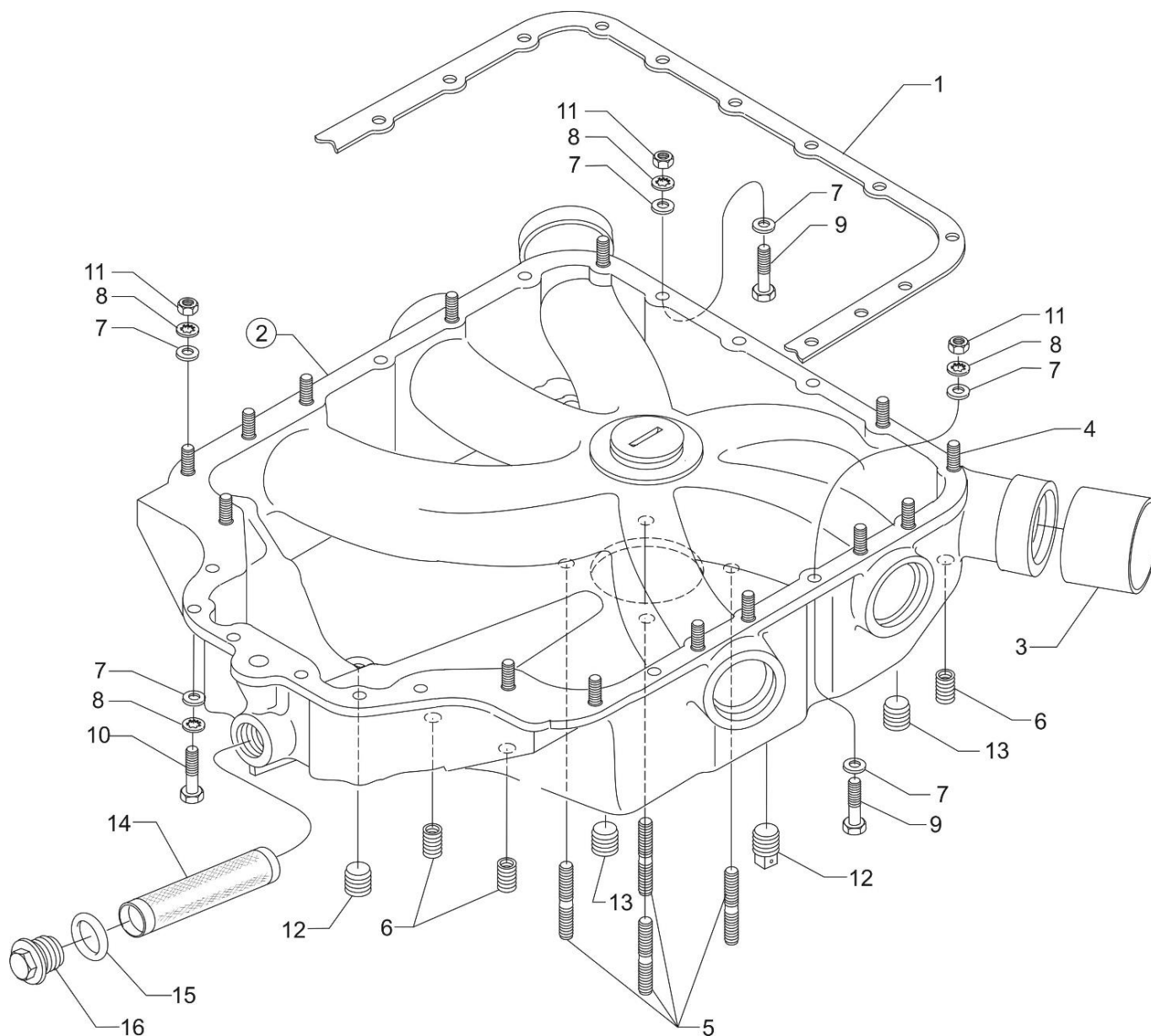


Figure 16
Oil Sump Assembly and Oil Suction Screen

LUBRICATION SYSTEM

FIGURE 16 – OIL SUMP ASSEMBLY AND OIL SUCTION SCREEN

| Figure Item | Code | Part Number | Description | Units per Assembly |
|-------------|------|---------------|---|--------------------|
| 1 | | 06B21326 | GASKET, Oil sump | 1 |
| 2 | | 56A21246 | SUMP ASSEMBLY, Oil | 1 |
| 3 | | 71699 | CONNECTION, Intake pipe | 6 |
| 4 | | 25C-11 | STUD, 1/4-20 x 1-3/8 long | 14 |
| 5 | | 31C-15 | STUD, 5/16-18 x 1-7/8 long | 4 |
| 6 | | STD-1173 | INSERT, 1/4-20 Heli-coil x 1/2 long | 4 |
| 7 | | STD-8 | WASHER, 1/4 plain | 34 |
| 8 | | STD-160 | WASHER, 1/4 lock, internal teeth | 27 |
| 9 | | LW-25-1.13 | BOLT, 1/4-20 x 1-1/8 long, hex. head | 7 |
| 10 | | LW-25-1.00 | BOLT, 1/4-20 x 1.00 long, hex. head | 6 |
| 11 | | STD-1411 | NUT, 1/4-20 plain | 21 |
| 12 | | STD-551 | PLUG, 1/2-14 NPT, square head, drilled | 2 |
| 13 | | STD-2229 | PLUG, 1/2-14 NPT, Allen head | 2 |
| 14 | | 70484 | SCREEN, Oil suction | 1 |
| 15 | | 06E19769-1.00 | GASKET, 1.00 I.D. x 1-1/4 O.D. x 3/32 thick | 1 |
| 16 | | LW-12545 | PLUG, 1.00-20 thread x 5/8 hex. head | 1 |

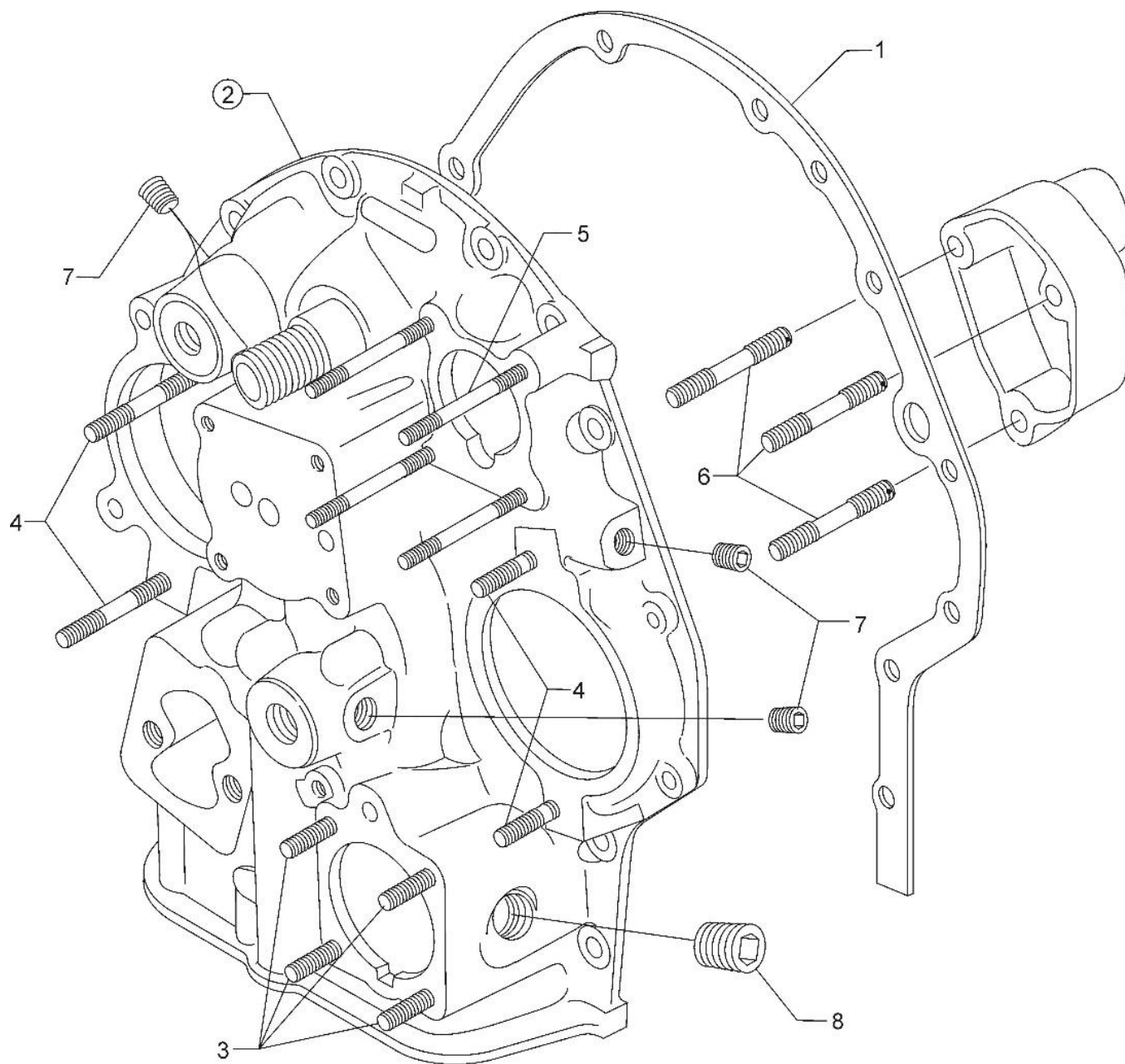


Figure 17
Accessory Housing Assembly

ACCESSORY DRIVES**FIGURE 17 – ACCESSORY HOUSING ASSEMBLY**

| Figure Item | Code | Part Number | Description | Units per Assembly |
|--------------------|-------------|--------------------|-------------------------------------|---------------------------|
| 1 | | 73818 | GASKET, Accessory housing | 1 |
| 2 | | 21C21539-03 | HOUSING ASSEMBLY, Accessory | 1 |
| 3 | | 31C-12 | STUD, 5/16-18 x 1-1/2 long | 4 |
| 4 | | 31C-21 | STUD, 5/16-18 x 2-5/8 long | 4 |
| 5 | | 25C-12 | STUD, 1/4-20 x 1-1/2 long | 4 |
| 6 | | 31CD-17 | STUD, 5/16-18 x 2-1/8 long, drilled | 3 |
| 7 | | 1102 | PLUG, 1/8-27 NPT, Allen head | 4 |
| 8 | | STD-784 | PLUG, 3/8-18 NPT, Allen head | 1 |

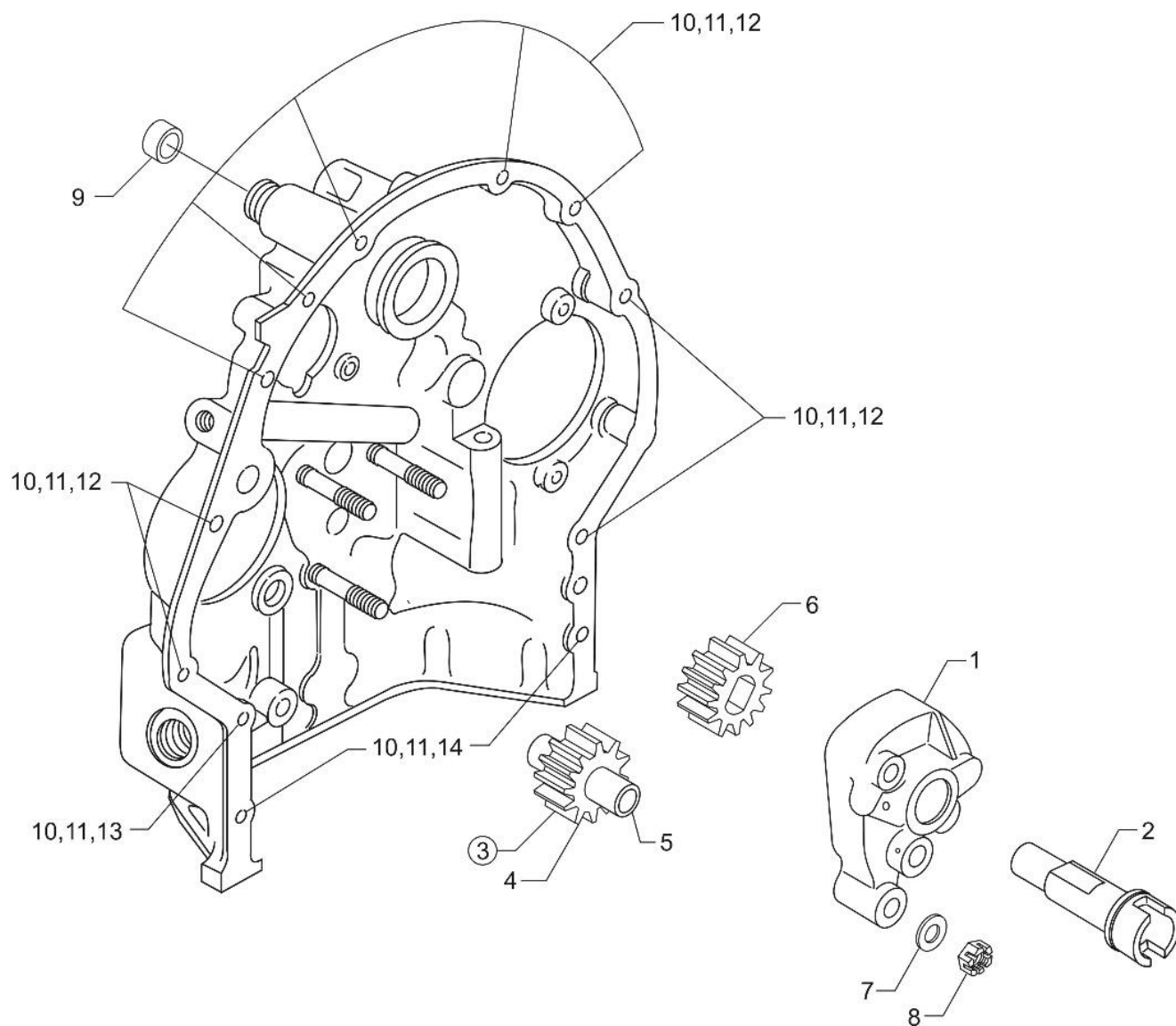


Figure 18
Oil Pump Assembly and Accessory Housing Attaching Parts

ACCESSORY DRIVES

FIGURE 18 – OIL PUMP ASSEMBLY AND ACCESSORY HOUSING ATTACHING PARTS

| Figure Item | Code | Part Number | Description | Units per Assembly |
|--|------|-------------|---------------------------------------|--------------------|
| 1 | | 78531 | BODY ASSEMBLY, Oil pump | 1 |
| 2 | | 74641 | SHAFT, Oil pump drive | 1 |
| 3 | * | LW-18110 | IMPELLER ASSEMBLY, Oil pump driven | 1 |
| 4 | | LW-18108 | IMPELLER, Oil pump, driven | 1 |
| 5 | | 78530 | SHAFT, Oil pump drive | 1 |
| 6 | * | LW-18109 | IMPELLER, Oil pump, driven | 1 |
| 7 | | STD-35 | WASHER, 5/16 plain | 3 |
| 8 | | STD-1420 | NUT, 5/16-18 slotted | 3 |
| 9 | | LW-14260 | SEAL, Tachometer shaft, oil | 1 |
| 10 | | STD-8 | WASHER, 1/4 plain | 12 |
| 11 | | STD-160 | WASHER, 1/4 lock, internal teeth | 12 |
| 12 | | LW-25-0.94 | BOLT, 1/4-20 x 15/16 long, hex. head | 9 |
| 13 | | LW-25-1.13 | BOLT, 1/4-20 x 1-1/8 long, hex. head | 1 |
| 14 | | LW-25-1.44 | BOLT, 1/4-20 x 1-7/16 long, hex. head | 2 |
| * Sold in complete sets only (Kit P/N 05K19423-S). | | | | |

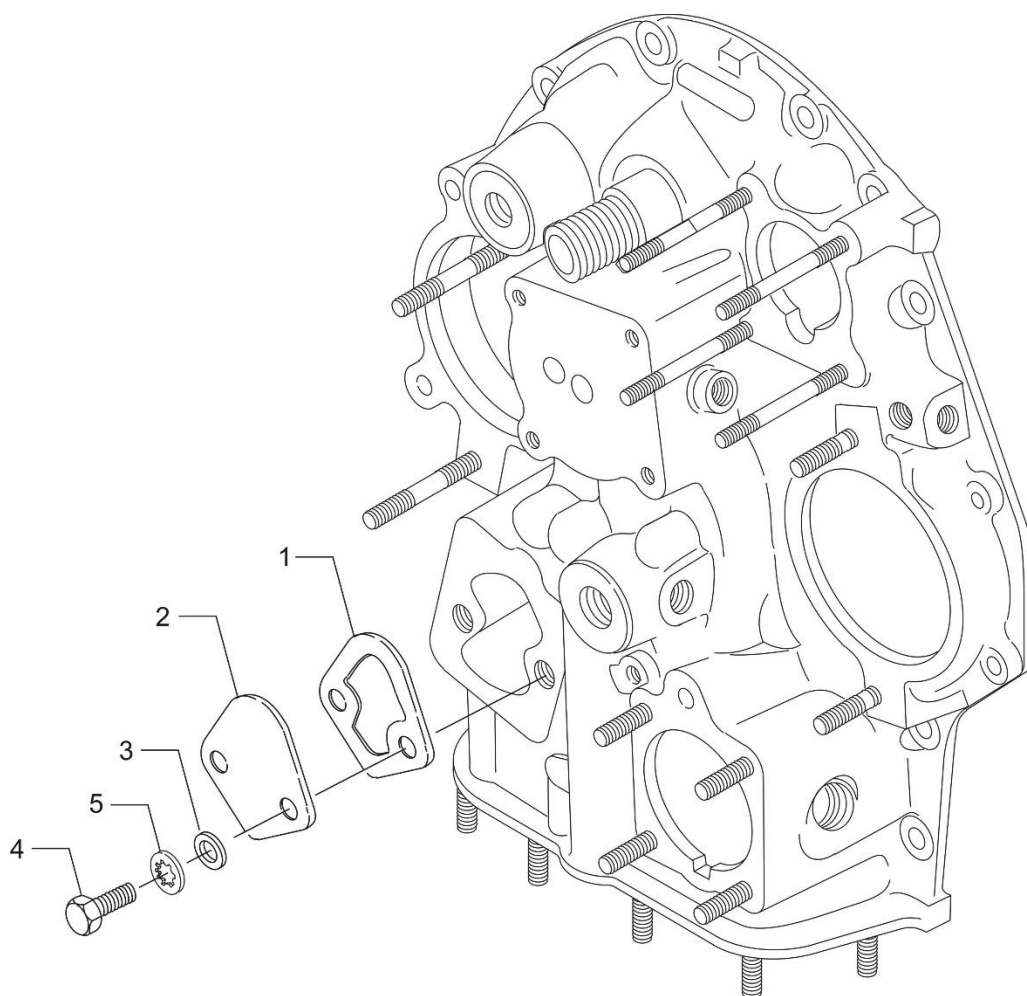


Figure 19
Fuel Pump Cover

ACCESSORY DRIVES**FIGURE 19 - FUEL PUMP COVER**

| Figure Item | Code | Part Number | Description | Units per Assembly |
|--------------------|-------------|--------------------|------------------------------------|---------------------------|
| 1 | | 60096 | GASKET, Fuel pump | 1 |
| 2 | | 03D23350 | COVER, Fuel pump | 1 |
| 3 | | STD-33 | WASHER, 3/8 plain | 2 |
| 4 | | LW-38-0.75 | BOLT, 3/8-16 x 3/4 long, hex. head | 2 |
| 5 | | STD-678 | WASHER, 3/8 lock, internal teeth | 2 |

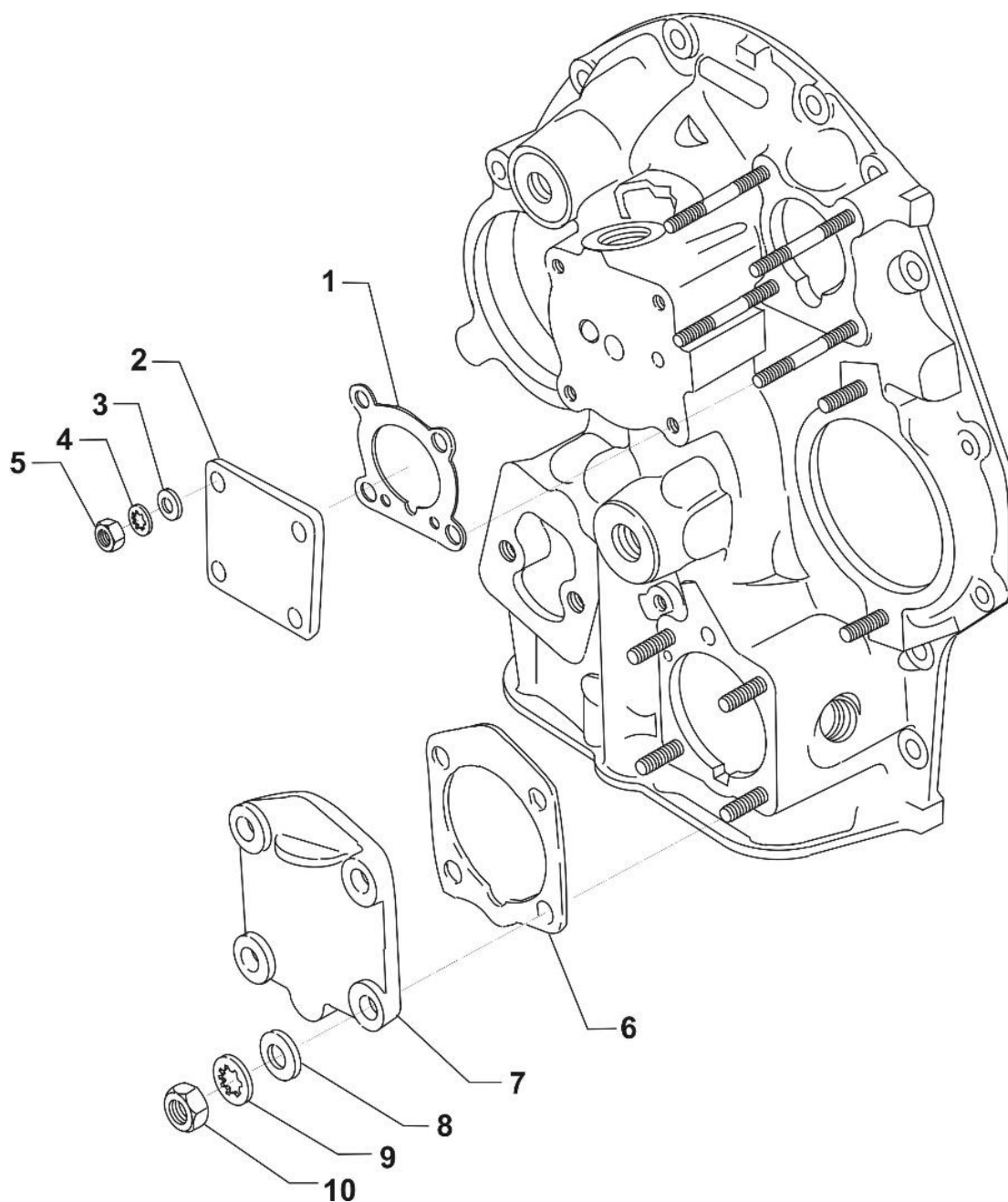


Figure 20
Vacuum and Hydraulic Pump Covers

ACCESSORY DRIVES

FIGURE 20 – VACUUM AND HYDRAULIC PUMP COVERS

| Figure Item | Code | Part Number | Description | Units per Assembly |
|-------------|------|-------------|-----------------------------------|--------------------|
| 1 | | 61183 | GASKET, Accessory adapter | 1 |
| 2 | | 60430 | COVER, Vacuum pump | 1 |
| 3 | | STD-8 | WASHER, 1/4 plain | 4 |
| 4 | | STD-160 | WASHER, 1/4 lock, internal teeth | 4 |
| 5 | | STD-1411 | NUT, 1/4-20 plain | 4 |
| 6 | | 69551 | GASKET, Accessory drive adapter | 1 |
| 7 | | 69106 | COVER, Governor drive adapter pad | 1 |
| 8 | | STD-35 | WASHER, 5/16 plain | 4 |
| 9 | | STD-475 | WASHER, 5/16 lock, internal teeth | 4 |
| 10 | | STD-1410 | NUT, 5/16-18 plain | 4 |

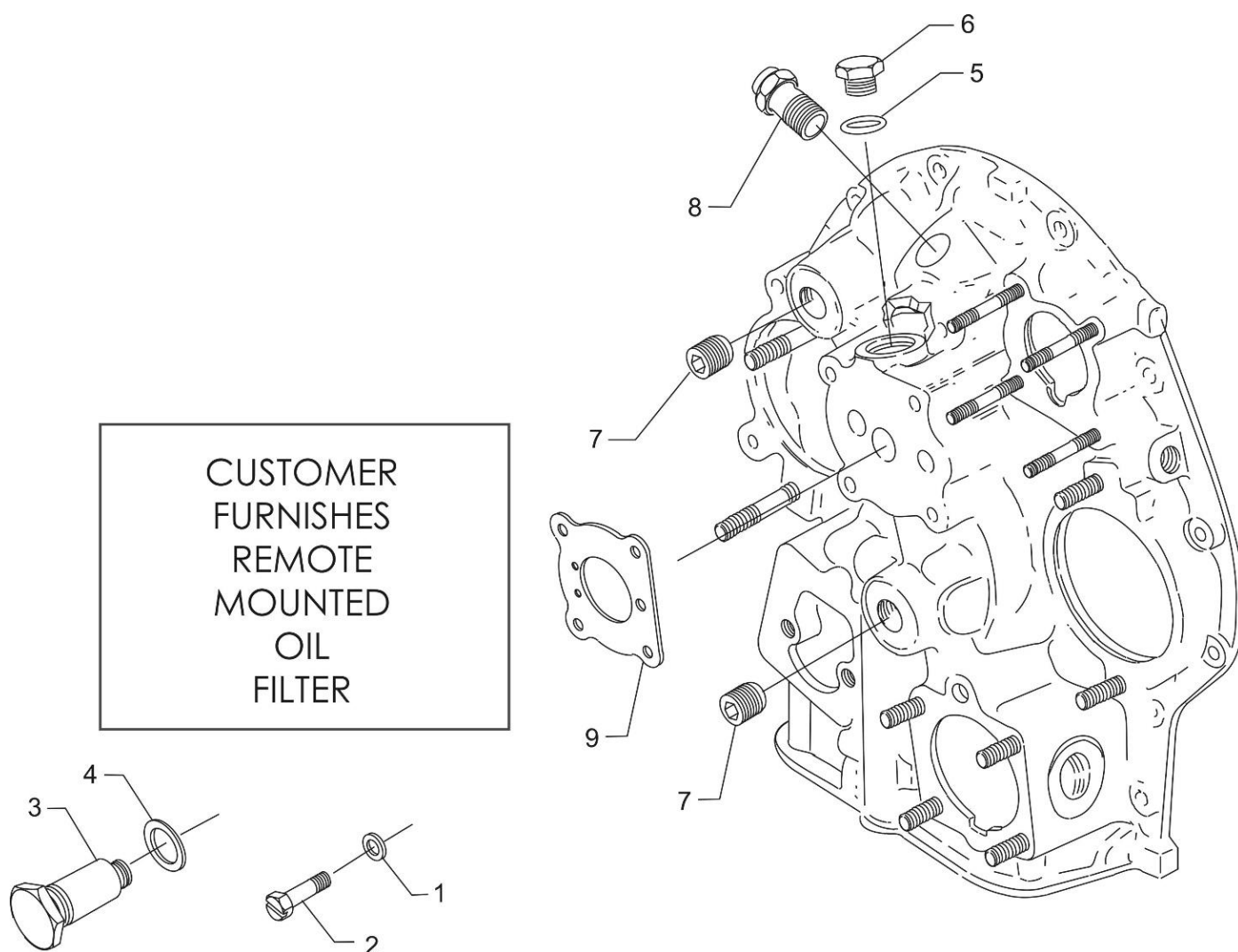


Figure 21
Oil Cooler Bypass Valve and Breather Fitting

ACCESSORY DRIVES

FIGURE 21 – OIL COOLER BYPASS VALVE AND BREATHER FITTING

| Figure Item | Code | Part Number | Description | Units per Assembly |
|-----------------------------|------|---------------|--|--------------------|
| 1 | | STD-8 | WASHER, 1/4 plain | 4 |
| 2 | | STD-1856 | SCREW, 1/4-20 x 1.00 long, hex. head | 4 |
| 3 | * | 53E22144 | VALVE ASSEMBLY, Temperature control oil cooler bypass | 1 |
| 4 | * | 76510 | GASKET, Valve assembly | 1 |
| 5 | | 06E19769-0.63 | GASKET, 5/8 I.D. annular | 1 |
| 6 | | 62417 | PLUG, Oil cooler bypass | 1 |
| 7 | | STD-784 | PLUG, 3/8-18 NPT, Allen head | 2 |
| 8 | | 72996 | FITTING, Breather | 1 |
| 9 | | 61173 | GASKET, Oil pressure housing | 1 |
| * - Ship loose with engine. | | | | |

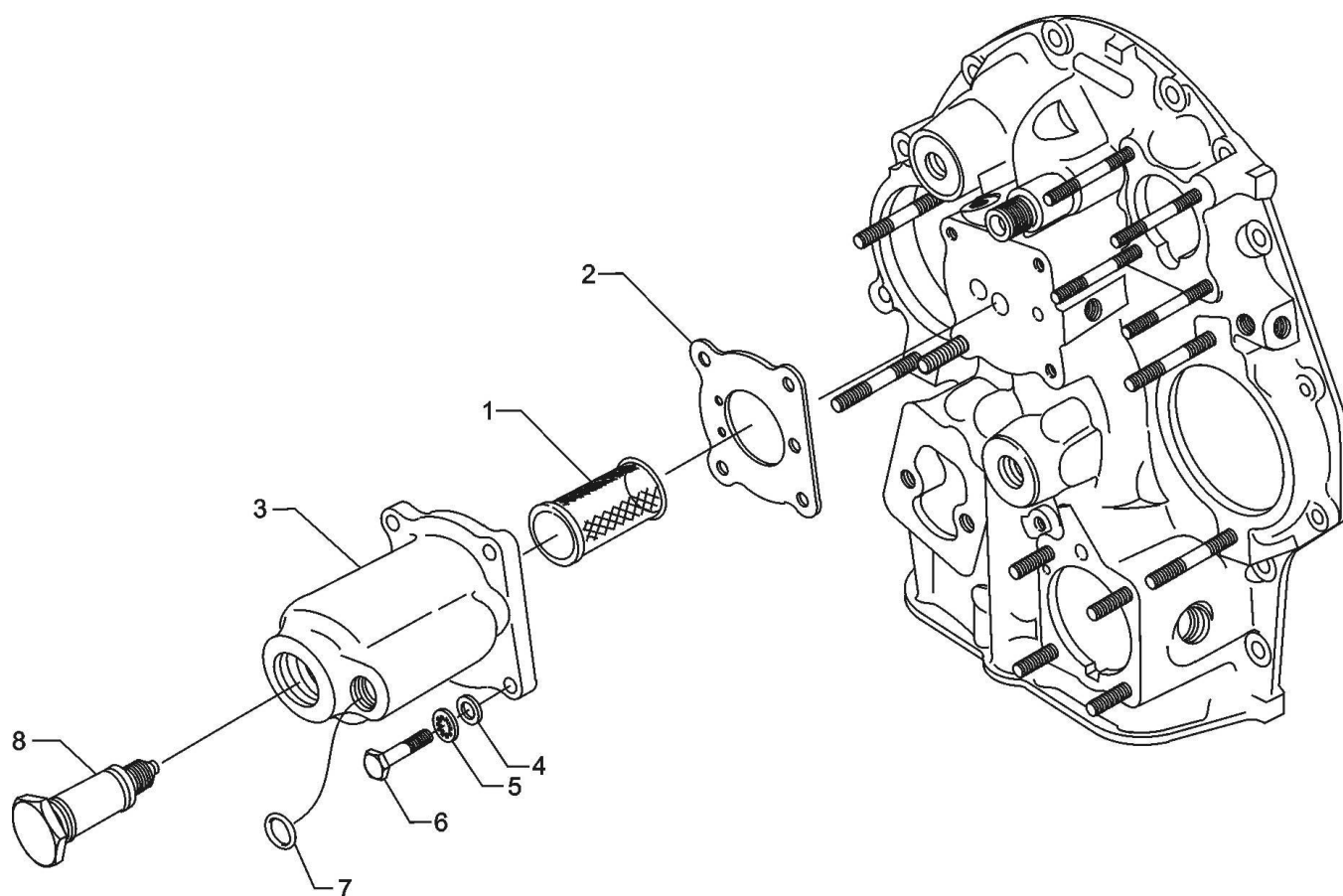


Figure 22
Oil Pressure Screen Assembly and Oil Cooler Bypass Valve

ACCESSORY DRIVES

FIGURE 22 – OIL PRESSURE SCREEN AND OIL COOLER BYPASS VALVE

| Figure Item | Code | Part Number | Description | Units per Assembly |
|-------------|------|---------------|--|--------------------|
| 1 | | 62817 | SCREEN ASSEMBLY, Oil pressure | 1 |
| 2 | | 61173 | GASKET, Oil pressure housing | 1 |
| 3 | | 69510 | HOUSING, Thermostatic valve and oil pressure screen | 1 |
| 4 | | STD-8 | WASHER, 1/4 plain | 4 |
| 5 | | STD-160 | WASHER, 1/4 lock, internal teeth | 4 |
| 6 | | LW-25-1.00 | BOLT, 1/4-20 x 1.00 long | 4 |
| 7 | | 06E19769-0.63 | GASKET, 7/8 O.D. x 5/8 I.D. x 3/32 annular | 1 |
| 8 | | 53E22144 | VALVE ASSEMBLY, Temperature control oil cooler bypass | 1 |

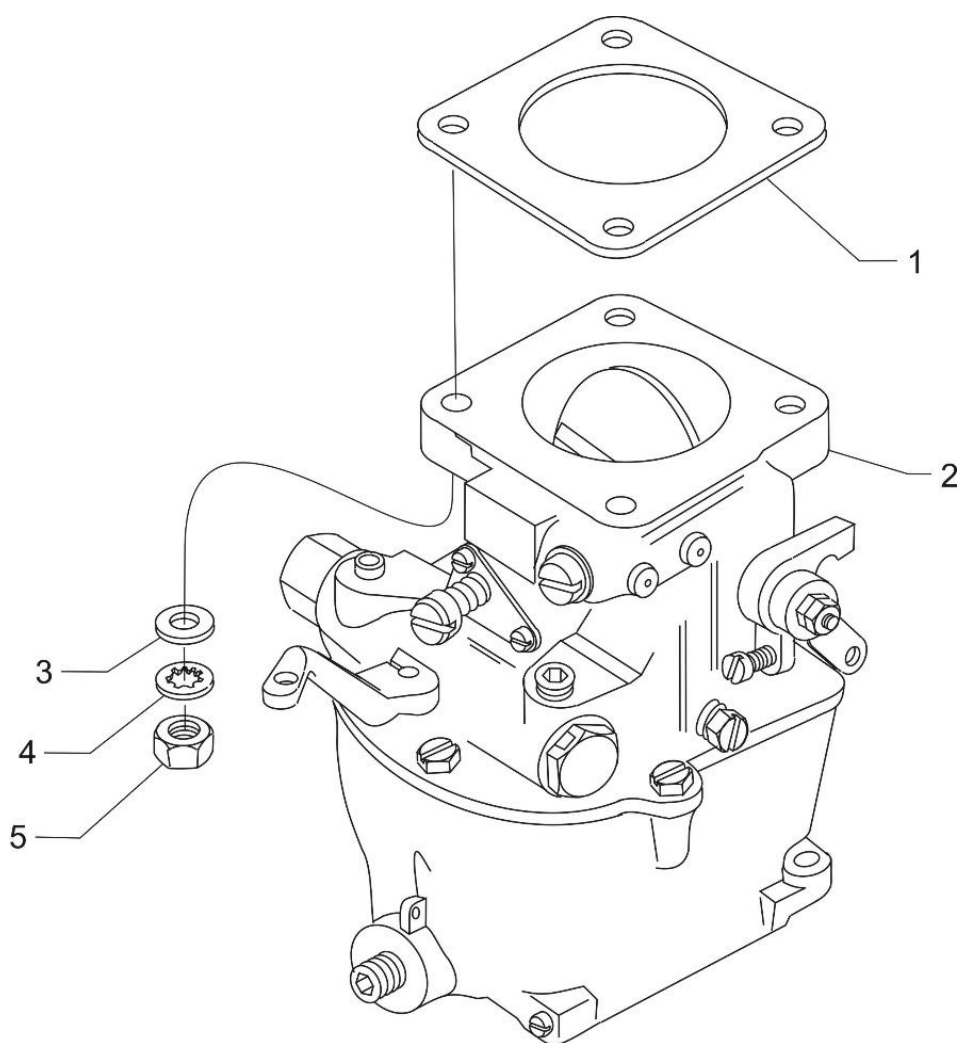


Figure 23
Carburetor and Related Parts

FUEL DISTRIBUTION**FIGURE 23 – CARBURETOR AND RELATED PARTS**

| Figure Item | Code | Part Number | Description | Units per Assembly |
|--------------------|-------------|--------------------|------------------------------------|---------------------------|
| 1 | | 66224 | GASKET, Carburetor | 1 |
| 2 | | 61C22451 | CARBURETOR, MA-4-5 (10-6035-11) | 1 |
| | | 61C26050 | CARBURETOR, MA-4-5 (AV 10-6035-11) | 1 |
| 3 | | STD-35 | WASHER, 5/16 plain | 4 |
| 4 | | STD-475 | WASHER, 5/16 lock, internal teeth | 4 |
| 5 | | STD-1410 | NUT, 5/16-18 plain | 4 |

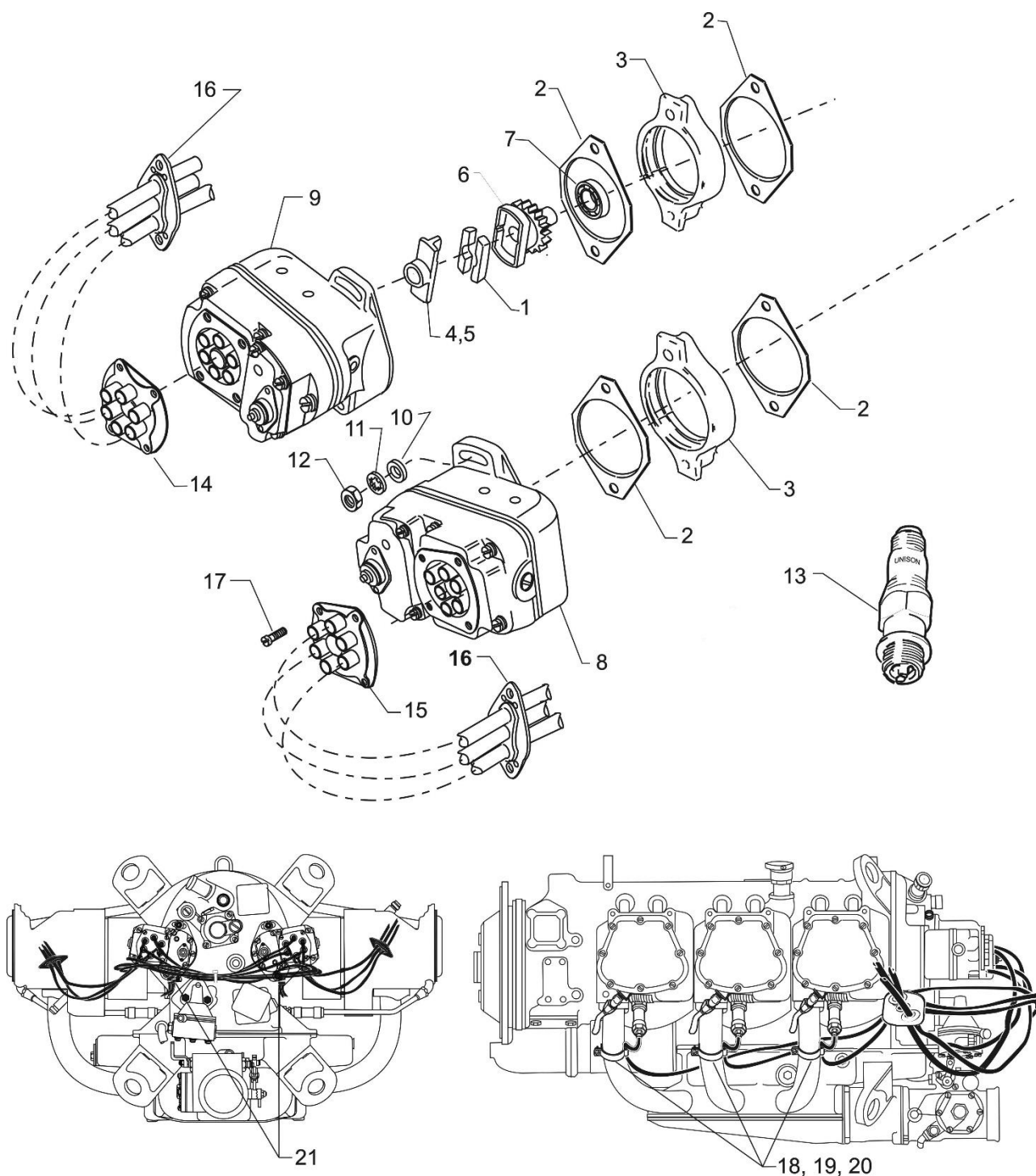


Figure 24
Magnetos, Magneto Drives, Harnesses and Spark Plugs

IGNITION DISTRIBUTION SYSTEM

FIGURE 24 – MAGNETOS, MAGNETO DRIVES, HARNESSSES AND SPARK PLUGS

| Figure Item | Code | Part Number | Description | Units per Assembly |
|--|------|-----------------|---|--------------------|
| 1 | | 68H22624 | CUSHION, Magneto drive | 4 |
| 2 | | 62224 | GASKET, Magneto adapter and magneto | 4 |
| 3 | | LW-12707 | ADAPTER, Magneto | 2 |
| 4 | | 73000 | COUPLING, Magneto drive | 1 |
| 5 | | 73013 | COUPLING, Magneto drive | 1 |
| 6 | | LW-19096 | GEAR RETAINER ASSEMBLY | 2 |
| 7 | | 67542 | BEARING, Ball | 2 |
| 8 | | 66B21783 | MAGNETO (S6LSC-204) | 1 |
| | * | 66B31683 | MAGNETO (ES-600646-201) | 1 |
| 9 | | 66B21774 | MAGNETO (S6LSC-200) | 1 |
| | * | 66B31674 | MAGNETO (ES-600616-3) | 1 |
| 10 | | STD-1727 | WASHER, 3/4 O.D. x 21/64 I.D. x 1/8 thick | 4 |
| 11 | | STD-475 | WASHER, 5/16 lock, internal teeth | 4 |
| 12 | | STD-1410 | NUT, 5/16-18 plain | 4 |
| 13 | ** | 1182-E7 | SPARK PLUG, Champion (REM38E) | 12 |
| | ** | 1182-S4 | SPARK PLUG, Unison (UREM38E) | 12 |
| 14 | | LW-M-2463 | HARNESS ASSEMBLY, Left magneto | 1 |
| 15 | | LW-M-2464 | HARNESS ASSEMBLY, Right magneto | 1 |
| 16 | | LW-M-2376 | PLATE, Spark plug cable | 2 |
| 17 | | 72351 | SCREW, No. 10-32 self-locking | 8 |
| 18 | | LW-18959-175-25 | CLAMP, 1-3/4 I.D. | 6 |
| 19 | | STD-553 | SCREW, No. 6-32 x 1/2 long | 6 |
| 20 | | MS21044N06 | NUT, No. 6-32 self-locking | 6 |
| 21 | | 76734 | ZIP STRAP | 10 |
| <p>* Refer to the latest revision of Service Instruction No. 1443 for a listing of approved alternate ignition systems.</p> <p>** Refer to the latest revision of Service Instruction No. 1042 for complete listing of all approved spark plugs.</p> | | | | |

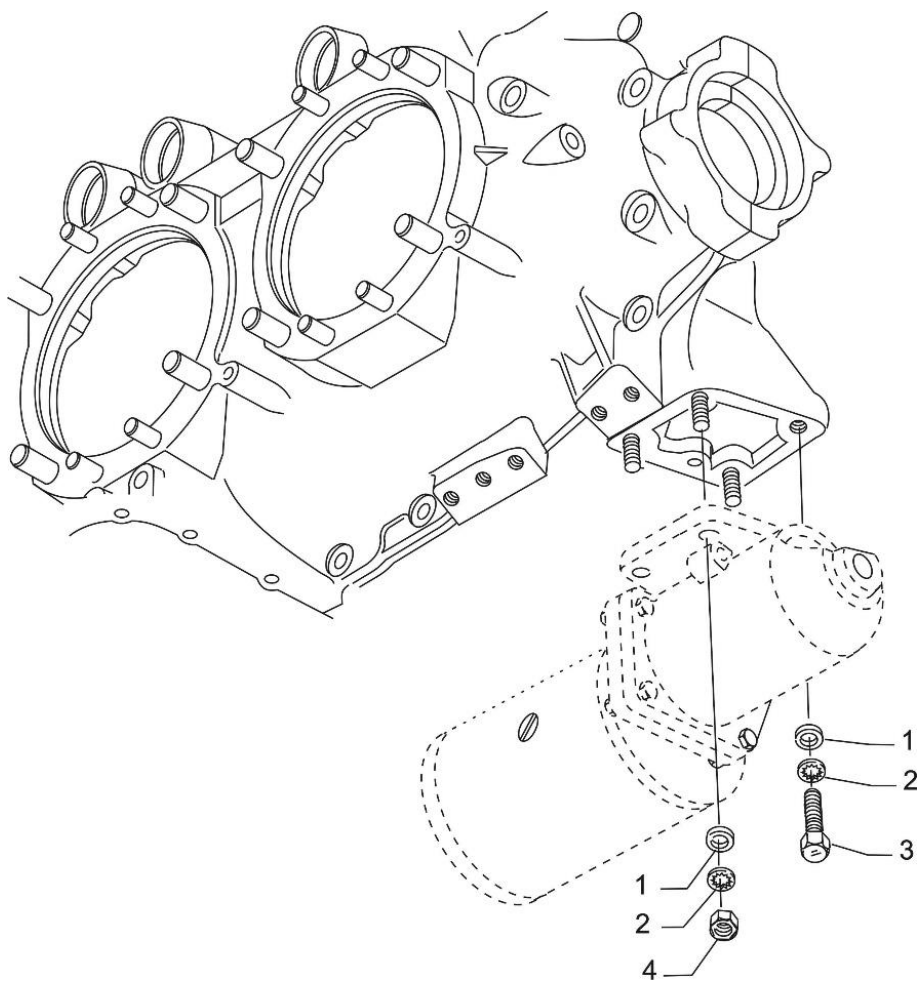


Figure 25
Starter Attaching Parts

CRANKING**FIGURE 25 - STARTER ATTACHING PARTS**

| Figure Item | Code | Part Number | Description | Units per Assembly |
|--------------------|-------------|--------------------|--|---------------------------|
| 1 | | STD-35 | WASHER, 5/16 plain | 4 |
| 2 | | STD-475 | WASHER, 5/16 lock, internal teeth | 4 |
| 3 | | LW-31-1.16 | BOLT, 5/16-18 x 1-5/32 long, hex. head | 1 |
| 4 | | STD-1410 | NUT, 5/16-18 plain | 3 |

SERVICE KIT SECTION**SEAL AND GASKET SET**

| PART NO. | PART NAME | Qty. |
|----------------|--|----------|
| 71569-1 | KIT - SEAL AND GASKET SET | 1 |
| LW-12272 | LOCKPLATE, Shroud tube | 6 |
| LW-12681 | GASKET, Magneto | 2 |
| 06B23862 | GASKET, Oil filter adapter | 1 |
| 06B21326 | GASKET, Oil sump | 1 |
| LW-13792 | SEAL, Crankshaft oil | 1 |
| LW-14260 | SEAL, Tachometer drive oil | 1 |
| LW-14995 | SPRING, Shroud tube | 6 |
| LW-15628 | SEAL, Crankshaft | 1 |
| LW-18638 | LOCKPLATE, Crankshaft gear | 1 |
| LW-18661 | SEAL, Shroud tube | 12 |
| 01L23459 | WASHER, 25/32 I.D. x 1-3/8 O.D. x 1/32 thick | 12 |
| 06A23493 | SEAL, Shroud tube | 12 |
| STD-2231 | RING, Internal retaining | 1 |
| 06E19769-1.00 | GASKET, Oil suction screen | 1 |
| STD-213 | SEAL, Oil | 1 |
| 06E19769-0.63 | GASKET, Annular | 2 |
| 06E19769-1.25 | GASKET, Annular | 1 |
| 06A19956 | SEAL, Oil | 2 |
| 1691-C | GASKET, Fuel pump | 1 |
| 8313 | GASKET, Vacuum pump | 2 |
| 60096 | GASKET, Fuel pump | 1 |
| 61173 | GASKET, Oil pressure housing | 1 |
| 61183 | GASKET, Accessory housing | 1 |
| 62224 | GASKET, Magneto adapter | 4 |
| 77611 | GASKET, Exhaust flange | 6 |
| 66224 | GASKET, Carburetor | 1 |
| 68315 | GASKET, Accessory drive adapter | 1 |
| 69164 | GASKET, Fuel pump adapter | 1 |
| 69345 | SPACER | 6 |
| 69551 | GASKET, Accessory drive adapter | 1 |
| 70310 | SEAL, Shroud tube | 12 |
| 70455 | GASKET | 1 |
| 70457 | GASKET | 1 |
| 71481 | RING, Oil seal | 6 |

SEAL AND GASKET SET (CONT.)

| PART NO. | PART NAME | Qty. |
|-----------------|-------------------------------------|-------------|
| 71667 | LOCKPLATE, Fuel pump idler gear | 1 |
| 71973 | GASKET, 2 bolt flange | 6 |
| 72053 | GASKET, Governor | 1 |
| 72059 | GASKET, Oil filler extension | 1 |
| 72075 | RING, Oil seal | 8 |
| 72078 | LOCKPLATE, Cam gear | 2 |
| 72091 | RING, Oil seal | 2 |
| 72210 | GASKET | 1 |
| 72312 | RING, Oil seal | 1 |
| 73383 | LOCKPLATE, Generator bracket | 2 |
| 73818 | GASKET, Accessory housing | 1 |
| 74065 | "O" RING, Oil level gage | 1 |
| 74068 | "O" RING | 1 |
| 74305 | SEAL | 1 |
| 06B26669 | GASKET, Rocker box cover (Silicone) | 6 |
| 76510 | GASKET | 1 |
| 76940 | SEAL, Crankshaft oil | 1 |

SERVICE KIT SECTION (CONT.)**CYLINDER, PISTON AND RING ASSEMBLY**

| PART NO. | PART NAME | Qty. |
|-----------------|---|-------------|
| 05K21745 | KIT - CYLINDER, PISTON AND RING ASSEMBLY | 1 |
| 16A30080-03 | CYLINDER AND HEAD ASSSEMBLY | 1 |
| 17B23936 | VALVE, Exhaust | 1 |
| 17A29467 | VALVE, Intake | 1 |
| 17D29060 | SPRING, Valve, outer | 2 |
| 17D29055 | SPRING, Valve, inner | 2 |
| 69532 | SEAT, Valve spring, upper, intake | 1 |
| LW-16475 | SEAT, Valve spring, upper, exhaust | 1 |
| 65441 | SEAT, Valve spring, lower, intake | 1 |
| LW-13323 | SEAT, Valve spring, lower, exhaust | 1 |
| 72050 | KEY, Valve, intake | 2 |
| 71C21191 | KEY, Valve, exhaust | 2 |
| 17C19386 | CAP, Valve stem, exhaust | 1 |
| MS20823-6D | ELBOW, 45°, 3/8 flared tube | 1 |
| 14D23912 | PISTON | 1 |
| 74241 | RING, Piston, compression | 2 |
| 14H29884 | RING, Piston, oil regulating | 1 |
| LW-14078 | PIN, Piston | 1 |
| 60828 | PLUG, Piston pin | 2 |
| 72198 | PLUG, Piston pin | 2 |
| 71481 | RING, Cylinder base seal | 1 |
| LW-18661 | SEAL, Shroud tube | 2 |
| 70310 | SEAL, Shroud tube | 2 |
| 06A23493 | SEAL, Shroud tube | 2 |
| 06B26669 | GASKET, Rocker box cover (Silicone) | 1 |
| 77611 | GASKET, Exhaust flange | 1 |
| 71973 | GASKET, 2 bolt flange | 1 |
| LW-12272 | LOCKPLATE, Shroud tube | 1 |
| 1102 | PLUG, 1/8-27 NPT, Allen head | 2 |
| 62388 | CAP, Valve stem | 2 |
| SSP-115 | STICKER | 1 |
| SSP-299 | TAG (Use of Piston Pin Plugs) | 1 |

NUMERICAL INDEX

| PART NO. | PART NAME | PAGE NO. | PART NO. | PART NAME | PAGE NO. |
|---------------|---------------|----------|-------------|---------------|----------|
| 01A23354 | STUD | 7 | 15F28835-32 | ROD ASSEMBLY | 24 |
| 01K28983 | BUSHING | 19 | 15F28835-33 | ROD ASSEMBLY | 24 |
| 01L23459 | WASHER | 23 | 15F28835-34 | ROD ASSEMBLY | 24 |
| 03C21721 | PLUG | 5 | 15F28835-35 | ROD ASSEMBLY | 24 |
| 03D23350 | COVER | 39 | 15F28835-36 | ROD ASSEMBLY | 24 |
| 06A23493 | SEAL | 23 | 15F28835-37 | ROD ASSEMBLY | 24 |
| 06B21326 | GASKET | 33 | 15G23461 | SHROUD TUBE | 23 |
| 06B26669 | GASKET | 27 | 15N23374 | CAMSHAFT ASSY | 13 |
| 06E19769-0.63 | GASKET | 43 | 16A30080-03 | CYLINDER ASSY | 21 |
| 06E19769-0.63 | GASKET | 45 | 16R22126 | GUIDE | 21 |
| 06E19769-1.00 | GASKET | 33 | 17A29467 | VALVE | 23 |
| 06E19769-1.25 | GASKET | 9 | 17B23936 | VALVE | 23 |
| 07A19474 | BRACKET | 1 | 17C19386 | CAP | 23 |
| 1028-B | BALL | 9 | 17C21191 | KEY | 23 |
| 10-8 | STUD | 7 | 17D29055 | SPRING | 23 |
| 1102 | PLUG | 7 | 17D29060 | SPRING | 23 |
| 1102 | PLUG | 21 | 17F19357 | ROCKER ASSY | 24 |
| 1102 | PLUG | 35 | 18A26093 | BEARING | 9 |
| 1182-E7 | SPARK PLUG | 49 | 18D23135 | BEARING | 9 |
| 1182-S4 | SPARK PLUG | 49 | 18M26105 | BEARING | 19 |
| 11E24004-S1 | CRANKCASE | 7 | 21C21539-03 | HOUSING ASSY | 35 |
| 11E24104-S1 | CRANKCASE | 7 | 23D26777 | PLUNGER | 15 |
| 13E27622 | CRANKSHAFT | 11 | 25C-11 | STUD | 33 |
| 13E47622 | CRANKSHAFT | 11 | 25C-12 | STUD | 35 |
| 13S19647 | GEAR | 11 | 25C-8 | STUD | 21 |
| 14D23912 | PISTON | 19 | 31C-12 | STUD | 7 |
| 14H29884 | RING | 19 | 31C-12 | STUD | 21 |
| 14S23890 | BOLT | 19 | 31C-12 | STUD | 35 |
| 14U22539 | COUNTERWEIGHT | 11 | 31C-13 | STUD | 7 |
| 14W22647 | ROLLER | 11 | 31C-14 | STUD | 7 |
| 15B21319 | SOCKET | 23 | 31C-15 | STUD | 33 |
| 15B26066 | PLUNGER ASSY | 23 | 31C-21 | STUD | 35 |
| 15B26588 | BODY | 9 | 31CD-17 | STUD | 35 |
| 15F28835-28 | ROD ASSEMBLY | 24 | 31M21951 | SUPPORT ASSY | 11 |
| 15F28835-29 | ROD ASSEMBLY | 24 | 31M22972 | SUPPORT ASSY | 11 |
| 15F28835-30 | ROD ASSEMBLY | 24 | 32B19549 | ALTERNATOR | 3 |
| 15F28835-31 | ROD ASSEMBLY | 24 | 36B19484 | PULLEY | 3 |

| PART NO. | PART NAME | PAGE NO. |
|--------------|----------------|----------|
| 37A19773-376 | BELT | 3 |
| 38-13 | STUD | 7 |
| 38-22 | STUD | 7 |
| 383-B | NUT | 27 |
| 38D-17 | STUD | 7 |
| 50-15 | STUD | 7 |
| 53E22144 | VALVE ASSEMBLY | 43 |
| 53E22144 | VALVE ASSEMBLY | 45 |
| 56A21246 | SUMP ASSEMBLY | 33 |
| 60096 | GASKET | 39 |
| 60096 | GASKET | 39 |
| 60430 | COVER | 41 |
| 60803 | STRAP | 17 |
| 61084 | SPRING | 9 |
| 61173 | GASKET | 43 |
| 61173 | GASKET | 45 |
| 61183 | GASKET | 41 |
| 61247 | COVER | 27 |
| 61C22451 | CARBURETOR | 47 |
| 61C26050 | CARBURETOR | 47 |
| 62224 | GASKET | 49 |
| 62417 | PLUG | 43 |
| 62817 | SCREEN ASSY | 45 |
| 65441 | SEAT | 23 |
| 66224 | GASKET | 47 |
| 66610 | BUSHING | 21 |
| 66796 | INSERT | 21 |
| 66B21774 | MAGNETO | 49 |
| 66B21783 | MAGNETO | 49 |
| 66B31674 | MAGNETO | 49 |
| 66B31683 | MAGNETO | 49 |
| 67530 | BUSHING | 15 |
| 67530 | BUSHING | 15 |
| 67542 | BEARING | 49 |
| 68668 | SPRING | 9 |
| 68759 | TUBE ASSEMBLY | 27 |
| 68760 | TUBE ASSEMBLY | 27 |
| 68761 | TUBE ASSEMBLY | 27 |

| PART NO. | PART NAME | PAGE NO. |
|----------|---------------|----------|
| 68H22624 | CUSHION | 49 |
| 69106 | COVER | 41 |
| 69510 | HOUSING | 45 |
| 69532 | SEAT | 23 |
| 69551 | GASKET | 41 |
| 69603 | HOSE | 29 |
| 69796 | DOWEL | 7 |
| 70310 | SEAL | 23 |
| 70416 | ROLLER | 11 |
| 70455 | GASKET | 5 |
| 70484 | SCREEN | 33 |
| 70485 | PIPE | 29 |
| 71481 | RING | 27 |
| 71611 | RETAINER | 27 |
| 71629 | HOOK | 27 |
| 71640 | PLUG | 11 |
| 71652 | GEAR ASSEMBLY | 15 |
| 71668 | GEAR ASSEMBLY | 15 |
| 71699 | CONNECTION | 33 |
| 71903-A | BUSHING | 11 |
| 71907 | WASHER | 11 |
| 71973 | GASKET | 29 |
| 72050 | KEY | 23 |
| 72053 | GASKET | 5 |
| 72057 | SEAT | 21 |
| 72058 | SEAT | 21 |
| 72059 | GASKET | 31 |
| 72091 | RING | 9 |
| 72155-S | BUSHING | 11 |
| 72158 | BUSHING | 7 |
| 72198 | PLUG | 19 |
| 72351 | SCREW | 49 |
| 72378 | COVER | 5 |
| 72566 | GEAR | 11 |
| 72996 | FITTING | 43 |
| 73000 | COUPLING | 49 |
| 73013 | COUPLING | 49 |
| 73346 | FLANGE | 29 |

| PART NO. | PART NAME | PAGE NO. |
|----------|----------------|----------|
| 73383 | LOCKPLATE | 1 |
| 73810 | BUSHING | 11 |
| 73818 | GASKET | 35 |
| 74068 | O-RING | 31 |
| 74241 | RING | 19 |
| 74637 | BUSHING | 24 |
| 74641 | SHAFT | 37 |
| 74887 | SPACER | 27 |
| 75061 | BOLT | 19 |
| 75380 | LINK | 1 |
| 75656-S | BUSHING | 11 |
| 75657-S | BUSHING | 11 |
| 76118 | SPACER | 13 |
| 76155 | SHAFT ASSY | 13 |
| 76220 | STUD | 17 |
| 76510 | GASKET | 43 |
| 76534 | SHIM | 1 |
| 76734 | ZIP STRAP | 49 |
| 76943 | GUIDE | 21 |
| 77467 | SPRING | 9 |
| 77611 | GASKET | 21 |
| 77808 | VALVE ASSEMBLY | 9 |
| 77906 | SPACER | 27 |
| 78530 | SHAFT | 37 |
| 78531 | BODY ASSEMBLY | 37 |
| 78589 | PLUG | 5 |
| AN6-16 | BOLT | 1 |
| AN6-17 | BOLT | 1 |
| AN6-34A | BOLT | 17 |
| LRT23381 | BODY ASSEMBLY | 9 |
| LW-11485 | SHROUD TUBE | 23 |
| LW-11713 | SPRING | 9 |
| LW-11750 | CONNECTING ROD | 19 |
| LW-12186 | NUT | 19 |
| LW-12272 | LOCKPLATE | 23 |
| LW-12545 | PLUG | 33 |
| LW-12707 | ADAPTER | 49 |
| LW-12892 | THRUST BUTTON | 24 |

| PART NO. | PART NAME | PAGE NO. |
|-----------------|---------------|----------|
| LW-13323 | SEAT | 23 |
| LW-13790 | SHAFT | 24 |
| LW-13792 | SEAL | 9 |
| LW-13795 | SHAFT | 15 |
| LW-13896 | PLUG | 5 |
| LW-14078 | PIN | 19 |
| LW-14260 | SEAL | 37 |
| LW-14318 | ALTERNATOR | 3 |
| LW-14820 | RING | 11 |
| LW-14995 | SPRING | 23 |
| LW-15592-5-05 | CLAMP | 27 |
| LW-15592-8-28 | CLAMP | 29 |
| LW-15839 | BAFFLE ASSY | 27 |
| LW-15970 | TUBE | 31 |
| LW-16475 | SEAT | 23 |
| LW-16783-17 | GAGE ASSEMBLY | 31 |
| LW-18085 | SPRING | 9 |
| LW-18108 | IMPELLER | 37 |
| LW-18109 | IMPELLER | 37 |
| LW-18110 | IMPELLER ASSY | 37 |
| LW-18481 | GASKET | 31 |
| LW-18482 | ADAPTER | 31 |
| LW-18638 | LOCKPLATE | 11 |
| LW-18661 | SEAL | 23 |
| LW-18667 | PIN | 13 |
| LW-18959-175-25 | CLAMP | 49 |
| LW-19096 | GEAR RETAINER | 49 |
| LW-19340 | CAMSHAFT ASSY | 13 |
| LW-25-0.94 | BOLT | 37 |
| LW-25-1.00 | BOLT | 33 |
| LW-25-1.00 | BOLT | 45 |
| LW-25-1.13 | BOLT | 17 |
| LW-25-1.13 | BOLT | 33 |
| LW-25-1.13 | BOLT | 37 |
| LW-25-1.25 | BOLT | 29 |
| LW-25-1.44 | BOLT | 37 |
| LW-25-1.50 | BOLT | 17 |
| LW-25-1.75 | BOLT | 17 |

| PART NO. | PART NAME | PAGE NO. |
|------------|--------------|----------|
| LW-25S1.50 | BOLT | 17 |
| LW-31-0.94 | BOLT | 1 |
| LW-31-1.16 | BOLT | 17 |
| LW-31-1.16 | BOLT | 51 |
| LW-31-2.75 | BOLT | 17 |
| LW-31H0.75 | BOLT | 1 |
| LW-31H0.75 | BOLT | 1 |
| LW-31H0.75 | BOLT | 1 |
| LW-31H0.88 | BOLT | 15 |
| LW-38-0.75 | BOLT | 39 |
| LW-M-2376 | PLATE | 49 |
| LW-M-2463 | HARNESS ASSY | 49 |
| LW-M-2464 | HARNESS ASSY | 49 |
| MS20823-6D | ELBOW | 21 |
| MS21044N06 | NUT | 49 |
| STD-8 | WASHER | 17 |
| STD-8 | WASHER | 17 |
| STD-8 | WASHER | 29 |
| STD-8 | WASHER | 33 |
| STD-8 | WASHER | 37 |
| STD-8 | WASHER | 41 |
| STD-8 | WASHER | 43 |
| STD-8 | WASHER | 45 |
| STD-28 | WASHER | 31 |
| STD-33 | WASHER | 1 |
| STD-33 | WASHER | 17 |
| STD-33 | WASHER | 17 |
| STD-33 | WASHER | 39 |
| STD-35 | WASHER | 1 |
| STD-35 | WASHER | 5 |
| STD-35 | WASHER | 17 |
| STD-35 | WASHER | 21 |
| STD-35 | WASHER | 37 |
| STD-35 | WASHER | 41 |
| STD-35 | WASHER | 47 |
| STD-35 | WASHER | 51 |
| STD-160 | WASHER | 17 |
| STD-160 | WASHER | 29 |

| PART NO. | PART NAME | PAGE NO. |
|----------|------------|----------|
| STD-160 | WASHER | 33 |
| STD-160 | WASHER | 37 |
| STD-160 | WASHER | 41 |
| STD-160 | WASHER | 45 |
| STD-251 | WASHER | 31 |
| STD-63 | NUT | 31 |
| STD-475 | WASHER | 5 |
| STD-475 | WASHER | 17 |
| STD-475 | WASHER | 21 |
| STD-475 | WASHER | 41 |
| STD-475 | WASHER | 47 |
| STD-475 | WASHER | 49 |
| STD-475 | WASHER | 51 |
| STD-514 | DOWEL | 7 |
| STD-551 | PLUG | 33 |
| STD-553 | SCREW | 49 |
| STD-557 | DOWEL | 7 |
| STD-596 | NUT | 17 |
| STD-678 | WASHER | 17 |
| STD-678 | WASHER | 39 |
| STD-684 | NIPPLE | 27 |
| STD-690 | WASHER | 1 |
| STD-713 | COTTER PIN | 1 |
| STD-784 | PLUG | 35 |
| STD-784 | PLUG | 43 |
| STD-872 | NUT | 1 |
| STD-872 | NUT | 17 |
| STD-1065 | DOWEL | 11 |
| STD-1173 | INSERT | 33 |
| STD-1211 | PLUG | 11 |
| STD-1339 | PLUG | 7 |
| STD-1339 | PLUG | 7 |
| STD-1353 | INSERT | 21 |
| STD-1410 | NUT | 5 |
| STD-1410 | NUT | 21 |
| STD-1410 | NUT | 41 |
| STD-1410 | NUT | 47 |
| STD-1410 | NUT | 49 |

| PART NO. | PART NAME | PAGE NO. |
|----------|-----------|----------|
| STD-1410 | NUT | 51 |
| STD-1411 | NUT | 17 |
| STD-1411 | NUT | 23 |
| STD-1411 | NUT | 33 |
| STD-1411 | NUT | 41 |
| STD-1420 | NUT | 37 |
| STD-1727 | WASHER | 1 |
| STD-1727 | WASHER | 49 |
| STD-1821 | HOSE | 27 |

| PART NO. | PART NAME | PAGE NO. |
|----------|-----------|----------|
| STD-1856 | SCREW | 43 |
| STD-1925 | SCREW | 27 |
| STD-2090 | NUT | 27 |
| STD-2168 | NUT | 15 |
| STD-2229 | PLUG | 33 |
| STD-2231 | RING | 13 |
| STD-2247 | BOLT | 11 |
| STD-2249 | NUT | 17 |

This page intentionally left blank.