

**Cub Crafters CC363i
(Lycoming YIO-360-EXP128)
Cub Crafters CC363i-FP
(Lycoming YIO-360-EXP304)
Illustrated Parts Catalog**

August 2025

PC-CC363i/CC363i-FP



652 Oliver Street
Williamsport, PA 17701

CC363i/CC363i-FP Illustrated Parts Catalog

Lycoming Part Number: PC-CC363I/CC363I-FP

For additional information:

Mailing address:

Lycoming Engines
652 Oliver Street
Williamsport, PA 17701 U.S.A.

Phone:

Product Support: U.S. and Canada toll free: +1-877-839-7878
International Customers: +1-570-323-7222

Lycoming Product Support regular business hours are:

Monday through Thursday from 8:00 A.M. through 10:00 P.M. Eastern Time (-5 GMT)
Friday from 8:00 A.M. through 6:00 P.M. Eastern Time (-5 GMT)

or Email: Technicalsupport@lycoming.com

Visit us online at:

www.lycoming.com



©2025 Lycoming. All Rights Reserved.

Lycoming and "Powered by Lycoming" are trademarks or registered trademarks of Lycoming.

Lycoming Engines, a division of AVCO Corporation.

All brand and product names referenced in this publication are trademarks or registered trademarks of their respective companies.

Record of Revisions

NOTICE: Service Documents with a later release date than this parts catalog override parts information in this document.

Rev No.	Revision Changes	Issue Date
New	Initial Release of PC-CC363i/CC363i-FP	August 2025

This page intentionally left blank

TABLE OF CONTENTS

<u>Subject</u>	<u>Chapter</u>	<u>Page</u>
Frontal		
Record of Revisions		i
Table of Contents		iii
Introduction		v
Abbreviations and Acronyms		ix
Oversize and Undersize Part Listing		xi
Reciprocating Engine	72-00	
Power Section	72-20	
1. Propeller Governor Drive Assembly		0-1
2. Crankcase Assembly		2-3
3. Crankcase Related Parts		4-5
4. Crankshaft Assembly and Related Parts		6-7
5. Crankshaft Idler Gears, Tachometer Drive, and Camshaft		8-9
6. Crankcase Attaching Parts		10-11
7. Crankcase Attaching Parts (Fixed Pitch Propeller)		12-13
Cylinder Section	72-30	
1. Connecting Rods, Pistons and Ring Assemblies		14-15
2. Cylinder Assembly		16-17
3. Valve Assembly and Related Parts		18-19
4. Cylinder Related Parts		20-21
5. Cylinder Head Drain Tubes, Intercylinder Cooling Baffles, and Rocker Box Covers		22-23
6. Intake Pipes and Attaching Parts		24-25
Lubrication System	72-50	
1. Oil Level Gage		26-27
Accessory Drives	72-60	
1. Accessory Housing Assembly		28-29
2. Oil Pump Assembly and Accessory Housing Attaching Parts		30-31
3. Fuel Pump Assembly and Attaching Parts		32-33
4. Oil Filter Assembly, Oil Cooler Bypass Valve and Breather Fitting		34-35
<u>Subject</u>	<u>Chapter</u>	<u>Page</u>

Engine and Fuel Control	73-00
Fuel Distribution	73-10
1. Fuel Injector, Fuel Manifold, and Fuel Lines	36-39
Ignition Distribution System	74-00
Distribution	74-00
1. Lightspeed Ignition	40-41
Exhaust System	78-00
Exhaust System	78-00
1. Exhaust Gasket and Flange Attaching Parts	42-43
Starting	80-00
Cranking	80-10
1. Starter Motor and Attaching Parts	44-45
Back Section	
Service Kit Section	46-49
Numerical Index	50-54

Introduction

⚠ CAUTION: DO NOT USE THIS CATALOG AS AN ASSEMBLY OR INSTALLATION DOCUMENT. THIS CATALOG MUST ONLY BE USED TO IDENTIFY PARTS IN CONJUNCTION WITH THE APPLICABLE MAINTENANCE OR OVERHAUL MANUAL.

PART NUMBERS AND DESCRIPTIONS IN THIS PARTS CATALOG ARE NOT AUTHORITATIVE AND CAN BE SUPERSEDED BY FAA APPROVED SERVICE BULLETINS AND SERVICE INSTRUCTIONS.

Purpose of this Catalog

This Illustrated Parts Catalog (IPC) contains a complete list of spare parts for the Lycoming CC363i/CC363i-FP wide cylinder flange model engine.

How to Use this Catalog

This catalog is based on the Air Transport Association (ATA) Spec 100 format. In order to clarify illustrations, Lycoming has taken discretion to classify non-system related assemblies and components in the same chapters, because they are physically connected.

This catalog is frequently updated by Service Bulletins (SB) and Service Instructions (SI). The updated information will be incorporated into subsequent full revisions of this catalog.

The ATA two element numbering system provides consistency throughout various manuals. The bottom of each page (beyond the frontal section) contains a two-element number (##-##). In the two element numbering, the first two digits represent a chapter, and the next two digits subdivide the material into a more specific section.

The ATA format specifies the subject matter for each chapter-section. According to the ATA Standards, the following chapters apply to the CC363i/CC363i-FP Illustrated Parts Catalog:

24 (Electrical Power), 72 (Reciprocating Engine), 73 (Engine and Fuel Control), 74 (Ignition), and 80 (Starting).

EXAMPLE: **74** — **20**
Chapter Section
Ignition **Distribution**

NOTE: See the IPC Table of Contents for the sub-systems listed in each section.

Numerical Index

The Numerical Index is a single list of part numbers, names and their locations within the IPC. It is useful for locating parts when you only know the number or name of the part.

Description column

Indentation of a part name represents a lower level of assembly. Attaching parts have the same indentation level and are listed below the parts grouping or assembly they attach to. This column is often referred to as the "Nomenclature" on other ATA Spec manuals.

Units per Assembly Column

Where more than one assembly exists, this column contains the quantity of a specific part required in the build sequence of only one next higher assembly. The letters “AR” are for “as required” applicable to bulk items or non-illustrated select-from-range-parts. The letters “RF” identify items for reference.

Lockwire, Safety Cable

To maintain as assembled torque integrity Lockwire used is to be a one continuous strand twisted to keep tension on various internal fasteners ensuring a minimum torque is retained. Lockwire installed correctly will pull in the direction of fastener assembled tension. Lycoming Engines does not recommend the use of safety cable for retention of internal engine parts or assemblies. Refer to the latest revision of **Service Instruction No. 1566**.

Vendor Accessories

Parts coverage of Vendor Accessories used on Lycoming engines may be found in the appropriate Vendor's Parts Catalog. A list of vendor's addresses appears in the latest revision of Lycoming Service Letter No. L114.

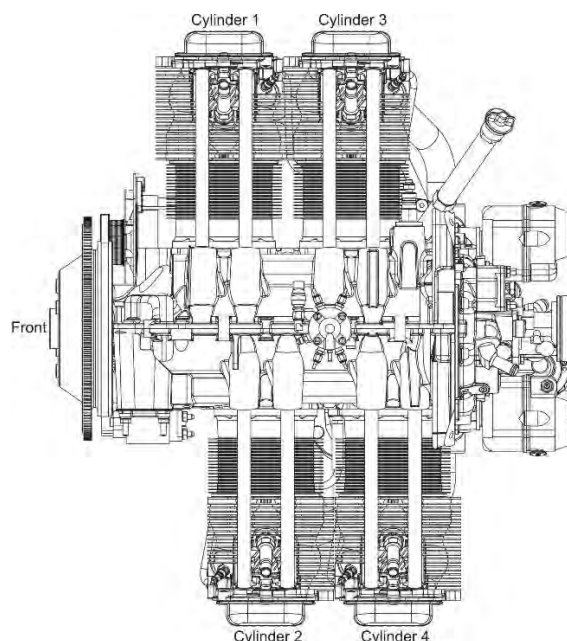
Any reference in this document to the suppliers/part manufacturer's product, by name, trademark, part number or other description is solely for the purpose of identification and does not indicate or infer that Lycoming accepts responsibility for quality control and/or airworthiness of parts, which do not pass through the Lycoming quality control system.

Environmental Compliance

Lycoming is concerned with preserving the environment. Lycoming strongly urges engine owners and repair/overhaul personnel to observe and comply with all federal, state, and local environmental regulations when solvents, paint, fuel, oil, chemicals, or other consumables are used in operating, maintaining, or overhauling an engine component. Please share our concern for, and commitment to a clean earth, clean water, and especially clean air for succeeding generations of flyers.

Perspective of References

In this manual, all references to locations of various components will be designated as if viewing the engine from the rear (or anti-propeller) end. The front of the engine is considered to be the propeller end and the oil sump is considered to be on the bottom of the engine. Cylinders are numbered from front to rear with the odd-numbered cylinders on the right-hand side. The firing order for this engine is 1-3-2-4.



Top View of Engine

How to Order Parts

To order parts from this parts catalog, contact an Authorized Lycoming Distributor with the part number(s), nomenclature, and quantity along with the model and serial number of your engine. Authorized Lycoming Distributors will have up-to-date part number supersedure, pricing, and availability information on parts listed in this parts catalog.

An Oversize and Undersize Parts List is included in the front section of this catalog to aid in ordering parts as necessary during maintenance or overhaul.

To supply any comments, suggestions, or corrections to this parts catalog, go online to the Lycoming.com website on the internet.

NOTE:

Lycoming recommends that owners of this manual sign up for email notification on the Technical Publications page of our website <https://www.lycoming.com/contact/knowledge-base/publications>. By submitting your email address, you will receive notification whenever Lycoming publishes a new or revised technical publication, including any revisions to this parts catalog.

©2025 by Lycoming. "All Rights Reserved." All Lycoming publications are to be considered copyrighted and may not be reproduced without permission of the company.

This page intentionally left blank.

Abbreviations and Acronyms

A	
Adj.	Adjustable
amp.	Ampere
Assy	Assembly
F	
F	Flat Tappet
Fill.	Fillister
H	
Hex.	Hexagon
I	
I.D.	Inside Diameter
M	
mm	Millimeter
N	
No.	Number
NPT	National Pipe Taper (thread)
O	
O.D.	Outside Diameter
P	
P/N	Part Number
psi	Pounds per square inch
RT	Roller Tappet

This page intentionally left blank

OVERSIZE AND UNDERSIZE PARTS LISTING

Part No.	Description	Oversize (in.)								Undersize (in.)		
		P02 .002	P05 .005	P10 .010	P15 .015	P20 .020	P30 .030	P40 .040	P50 .050	M03 .003	M06 .006	M10 .010
18D26098	BEARING									X	X	X
18A26093	BEARING									X	X	X
18M23887	BEARING									X	X	X
LW-13792	SEAL								X			
72155-S	BUSHING		X	X	X	X						
75656-S	BUSHING		X	X	X	X						
75657-S	BUSHING		X	X	X	X						
STD-1065	DOWEL	X	X	X	X							
74241	RING			X								
14H29884	RING			X		X						
72057	SEAT		X	X		X	X					
72058	SEAT		X	X		X	X					
76943*	GUIDE		X	X		X	X	X				
16R22126*	GUIDE		X	X		X	X	X				
66610	BUSHING		X	X								

* - Reference Figure 12 items no. 4 and 5 for valve guides.

Refer to the latest revision of Service Instruction No. 1256 for the current part numbers for valve guides.

NOTE

When ordering oversize and undersize parts, be sure to specify the required oversize and undersize dimension along with the proper part number. For example, to order bearing P/N 18D26098 in .003 in. undersize, order P/N 18D26098-M03. Undersize code letter is "M" while oversize code letter is "P". These letters are then followed by the number designating the size in thousandths of an inch.

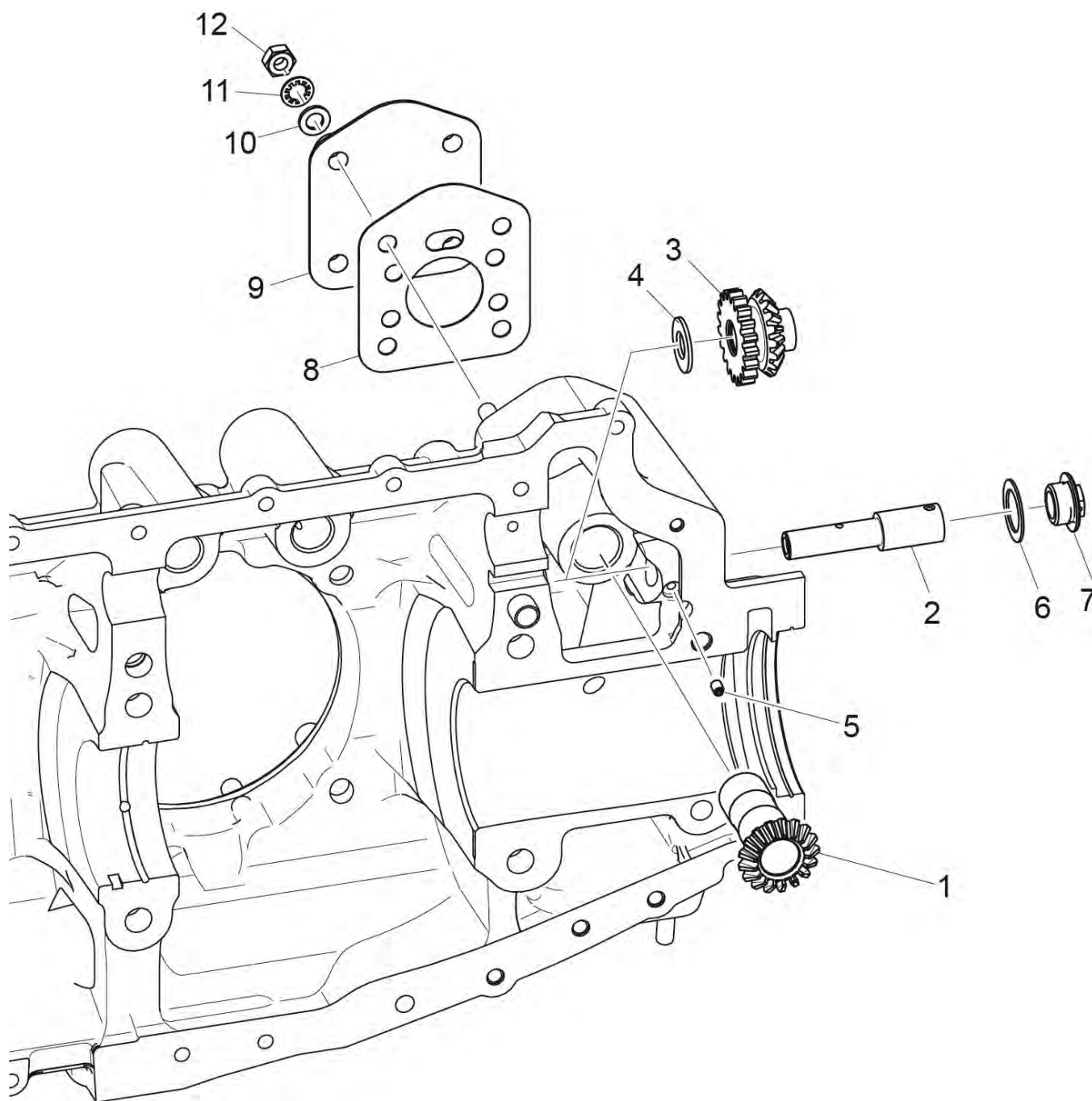


Figure 1
Propeller Governor Drive Assembly

FRONT SECTION**FIGURE 1 - PROPELLER GOVERNOR DRIVE ASSEMBLY**

Figure Item	Code	Part Number	Description	Units per Assembly
1		77875	GEAR, Propeller governor driven	1
2		LW-14021	SHAFT, Propeller governor idler gear	1
3		77874	GEAR ASSEMBLY, Propeller governor idler	1
4	AR	73249	WASHER, Thrust (0.0585 - 0.0595 thick)	AR
	AR	73250	WASHER, Thrust (0.062 - 0.063 thick)	AR
	AR	73251	WASHER, Thrust (0.0655 - 0.0665 thick)	AR
	AR	73252	WASHER, Thrust (0.069 - 0.070 thick)	AR
	AR	01L21418	WASHER, Thrust (0.055 - 0.056 thick)	AR
5		AN565B1032H5	SET SCREW, No. 10-32 x 5/16 long	1
6		70455	GASKET, 25/32 I.D. x 1-1/8 O.D. x 1/16 thick	1
7		LW-13896	PLUG, 3/4-16 hex. head	1
8		72053	GASKET, Propeller	1
9		72378	COVER, Governor drive	1
10		STD-35	WASHER, 5/16 plain	4
11		STD-475	WASHER, 5/16 lock, internal teeth	4
12		STD-1410	NUT, 5/16-18 plain	4
AR as required				

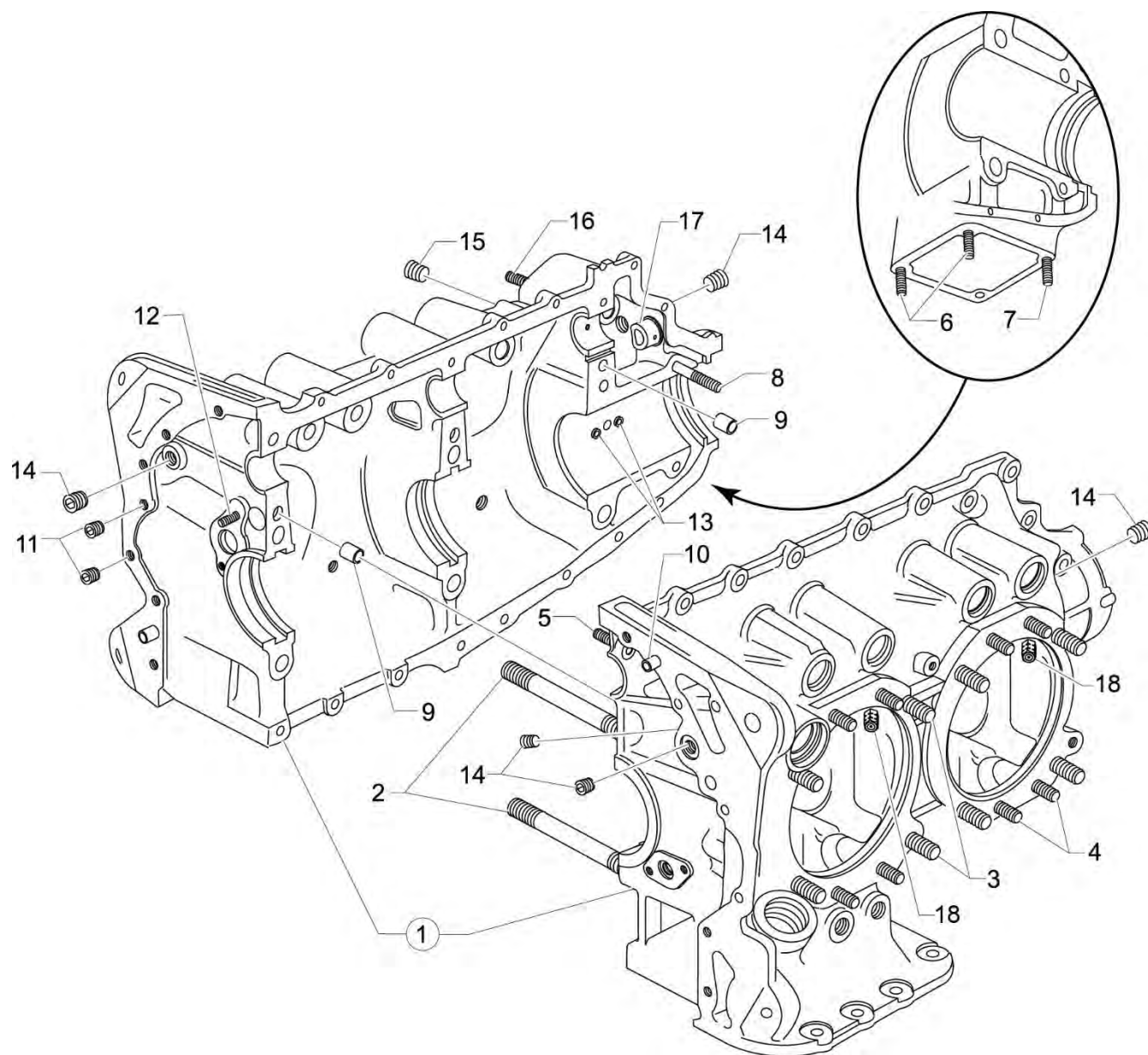


Figure 2
Crankcase Assembly

POWER SECTION
FIGURE 2 – CRANKCASE ASSEMBLY

Figure Item	Code	Part Number	Description	Units per Assembly
1	*	11B19524-5	CRANKCASE ASSEMBLY, Roller Lifter	1
		11B20161-3SL	C'CASE ASSY, Roller Lifter (Fixed Pitch Prop)	1
2		75154	STUD, 1/2-13 x 10-1/32 long	2
3		50-15	STUD, 1/2-13 x 1-7/8 long	8
4		38-13	STUD, 3/8-16 x 1-5/8 long	16
5		38D-17	STUD, 3/8-16 x 2-1/8 long, drilled	1
6		31C-12	STUD, 5/16-18 x 1-1/2 long	2
7		31C-13	STUD, 5/16-18 x 1-5/8 long	1
8		38-22	STUD, 3/8-16 x 2-3/4 long	1
9		STD-557	DOWEL, 1/2 dia. x 11/16 long, hollow	2
10		STD-514	DOWEL, 5/16 dia. x 1/2 long	2
11		STD-1623	INSERT, 1/4-20 Heli-coil x 3/8 long	2
12		LW-13793	STUD, 5/16-18 x 15/16 long, drilled	1
13		69796	DOWEL, Crankshaft bearing	2
14		1102	PLUG, 1/8-27 NPT, allen head	5
15		STD-1339	PLUG, 1/16-27 NPT, allen head	5
16		31C-17	STUD, 5/16-18 x 2-1/8 long	4
17		72158	BUSHING, Governor drive idler shaft	1
18		73772	NOZZLE ASSEMBLY, Piston cooling	4
* Refer to Service Kits Section for applicable Crankcase Assembly and Governor Thru-Stud Kit Part Numbers.				

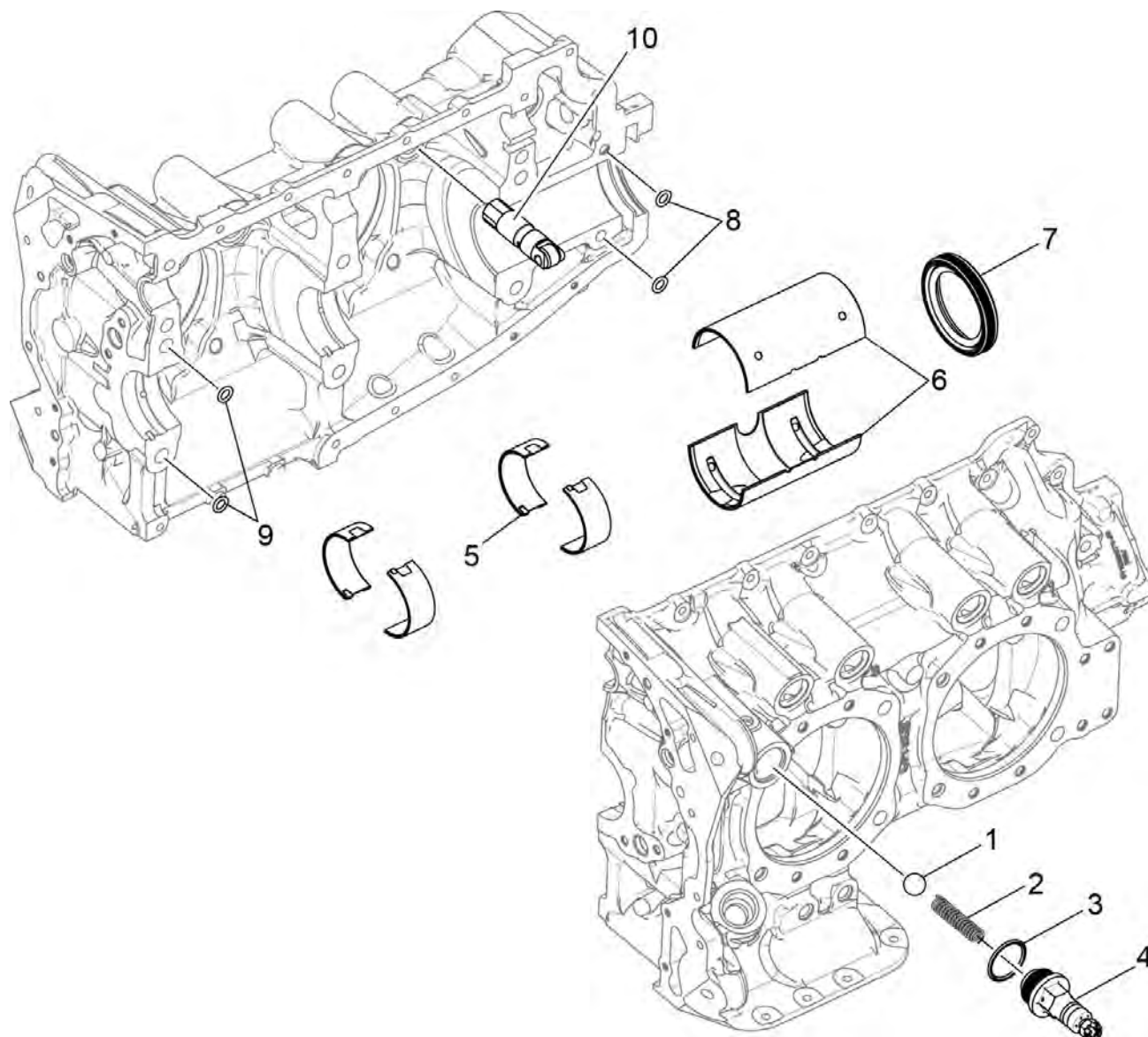


Figure 3
Crankcase Related Parts

POWER SECTION**FIGURE 3 - CRANKCASE RELATED PARTS**

Figure Item	Code	Part Number	Description	Units per Assembly
1		1028-B	BALL, 11/16 diameter	1
2	❖	61084	SPRING, Oil pressure relief valve	AR
	❖	68668	SPRING, Oil pressure relief valve	AR
	❖	77467	SPRING, Oil pressure relief valve	AR
	❖	LW-11713	SPRING, Oil pressure relief valve	AR
	❖	LW-18085	SPRING, Oil pressure relief valve	AR
3		06E19769-1.25	GASKET, Annular, 1-1/4 I.D.	1
4		77808	VALVE ASSEMBLY, Oil pressure relief valve, adjustable	1
5		18D26098	BEARING, Crankshaft	4
6		18A26093	BEARING, Crankshaft	2
7	▲	LW-13792	SEAL, Crankshaft oil	1
8		72075	SEAL, Oil, 3/32 section x 7/16 I.D.	2
9		72091	RING, Oil seal, 0.36 ID x 0.10 diameter	2
10		LRT23381	BODY ASSEMBLY, Hydraulic roller tappet	8
AR - as required ❖ Select spring to give a minimum of three threads exposed on adjusting screw to allow field adjustment. Reference latest revision of Lycoming Table of Limits SSP-1776, Part I for spring identification. ▲ Refer to latest revision of Lycoming Service Instruction No. 1324 for installation.				

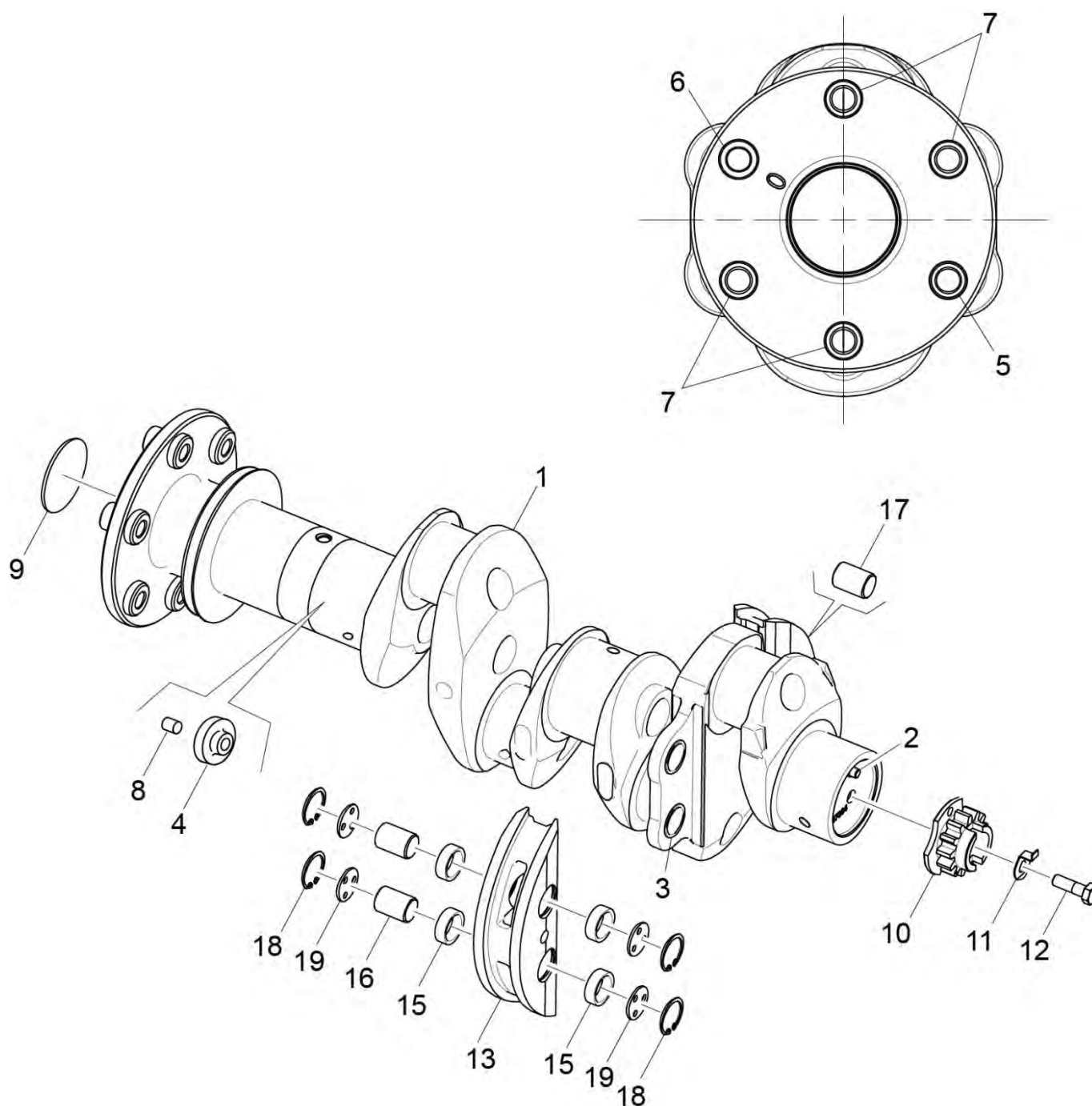


Figure 4
Crankshaft Assembly and Related Parts

POWER SECTION**FIGURE 4 - CRANKSHAFT ASSEMBLY AND RELATED PARTS**

Figure Item	Code	Part Number	Description	Units per Assembly
1		13B47219	CRANKSHAFT ASSEMBLY	1
		13B47121	CRANKSHAFT ASSEMBLY (Fixed Pitch Propeller)	1
2		STD-1065	DOWEL, Stepped, 5/16 & 1/4 diameter	1
3		73810	BUSHING, Crankshaft, Counterweight	4
4		74711	PLUG, 1.25	1
5		72155-S	BUSHING, Propeller flange, short	1
6		75657-S	BUSHING, Propeller flange, indexing	1
7		75656-S	BUSHING, Propeller flange, long	4
8		1102	PLUG, .125 Pipe	1
9		STD-1211	PLUG, 2.00 diameter expansion	1
10	SB*	13S19646	GEAR, Crankshaft	1
11		LW-18639	LOCKPLATE, Crankshaft gear	1
12		STD-2246	BOLT, 5/16-24 x 1.00 long	1
13		LW-19227	COUNTERWEIGHT ASSEMBLY	2
14		LW-19221	COUNTERWEIGHT, Dynamic	1
15		71903-A	BUSHING, Dynamic Counterweight	4
16		14W21696	ROLLER, Dynamic Counterweight-8	2
17		72797	ROLLER, Dynamic Counterweight-6.3 Order	2
18		LW-14820	RING, Internal Retaining	8
19		71907	WASHER, Counterweight	8

SB Referencing Service Bulletin

* Refer to the latest revision of Lycoming Service Bulletin No. 475 for proper installation.

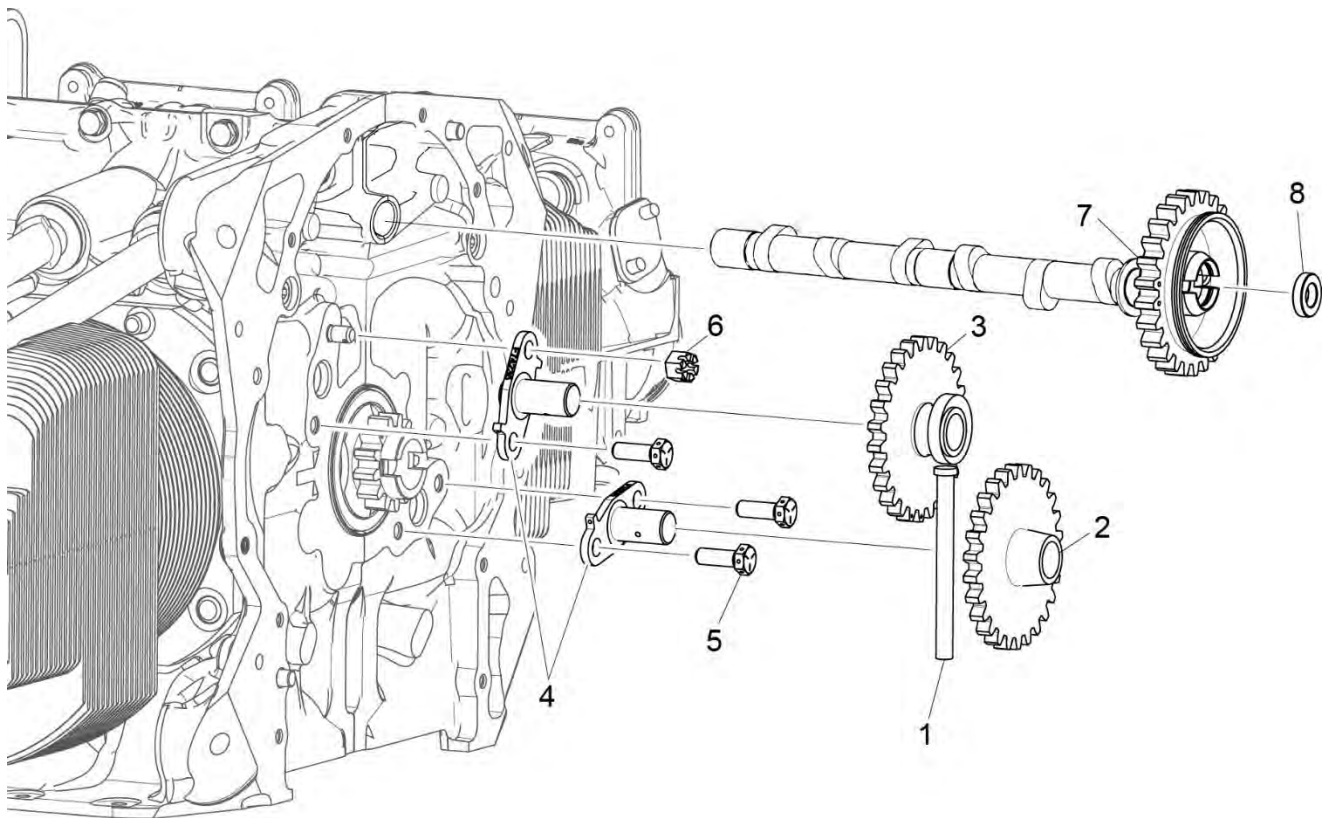


Figure 5
Crankshaft Idler Gears, Tachometer Drive and Camshaft

POWER SECTION**FIGURE 5 - CRANKSHAFT IDLER GEARS, TACHOMETER DRIVE AND CAMSHAFT**

Figure Item	Code	Part Number	Description	Units per Assembly
1		23D26777	PLUNGER, Fuel pump, long	1
2		74996	GEAR ASSEMBLY, Crankshaft idler, plain	1
3		75072	GEAR ASSEMBLY, Crankshaft idler	1
4		LW-13796	SHAFT, Crankshaft idler gear	2
5		LW-31H0.88	BOLT, 5/16-18 x 7/8 long, hex. head, drilled	3
6		STD-2168	NUT, 5/16-18 NC-3 slotted shear	1
7		15M23456	CAMSHAFT ASSEMBLY, Roller lifter	1
		15M23452	CAM ASSY, Roller lifter (Fixed Pitch Propeller)	1
8		76118	SPACER, Tachometer shaft centering	1

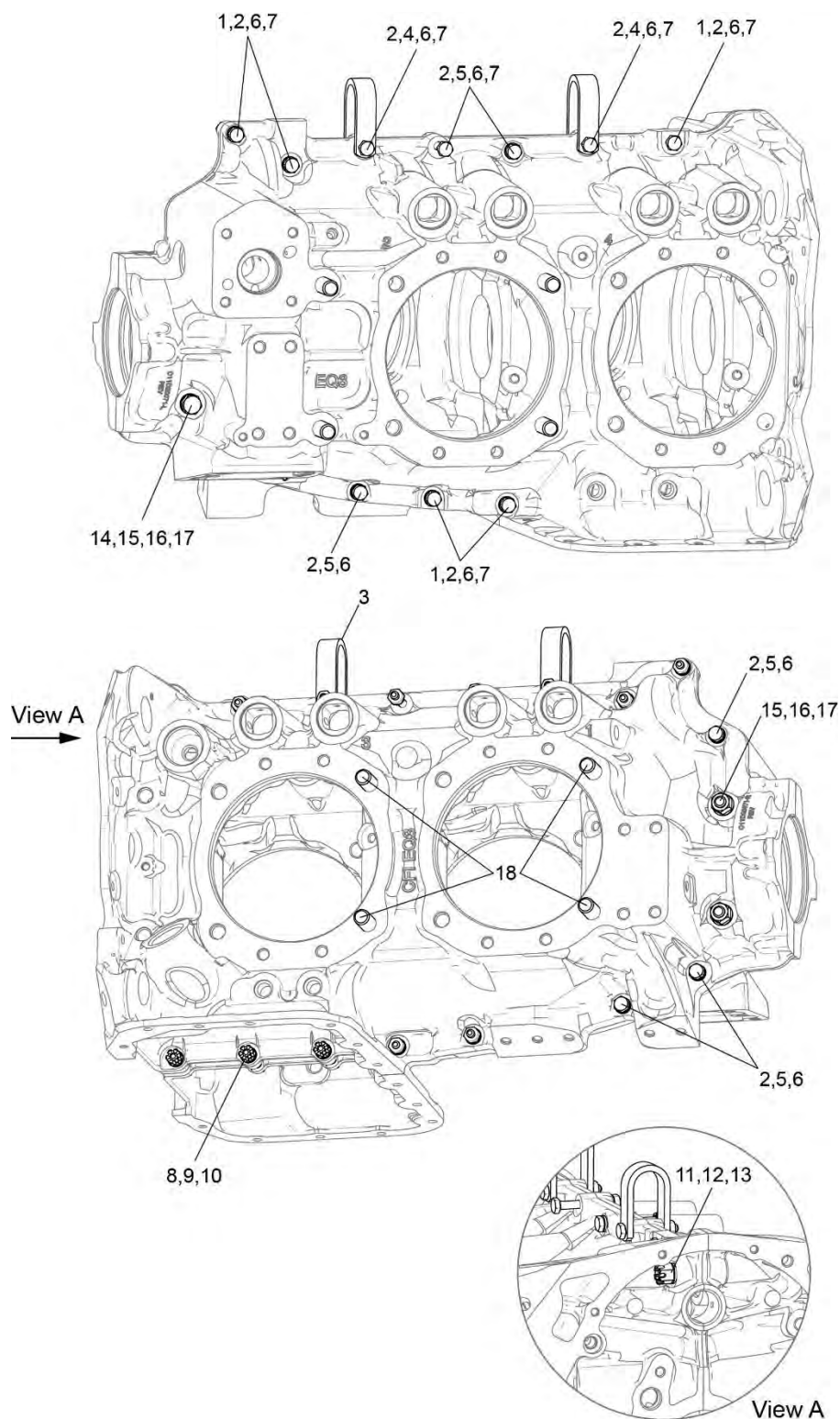


Figure 6A
Crankcase Attaching Parts

POWER SECTION**FIGURE 6A - CRANKCASE ATTACHING PARTS**

Figure Item	Code	Part Number	Description	Units per Assembly
1		LW-25-1.50	BOLT, 1/4-20 x 1-1/2 long, hex. head	5
2		STD-8	WASHER, 1/4 plain	17
3		60803	STRAP, Lifting	2
4		LW-25-1.75	BOLT, 1/4-20 x 1-3/4 long, hex. head	2
5		LW-25-1.13	BOLT, 1/4-20 x 1-1/8 long, hex. head	4
6		STD-160	WASHER, 1/4 lock, internal teeth	13
7		STD-1411	NUT, 1/4-20 plain	9
8		LW-25S1.50	BOLT, 1/4-20 x 1-1/2 long, hex. head, drilled	3
9		STD-8	WASHER, 1/4 plain	AR
10		STD-2249	NUT, 1/4-20 slotted	3
11		STD-33	WASHER, 3/8 plain	2
12		NAS1149F0632P	WASHER, 3/8 plain (thin)	3
13		STD-872	NUT, 3/8-24 slotted	1
14		AN6-34A	BOLT, 3/8-24 x 3-37/64 long, hex. head	1
15		STD-33	WASHER, 3/8 plain	3
16		STD-678	WASHER, 3/8 lock, internal teeth	2
17		STD-596	NUT, 3/8-24 plain	2
18		76220	STUD, 1/2-20 x 10-45/64 long	4
AR as required				

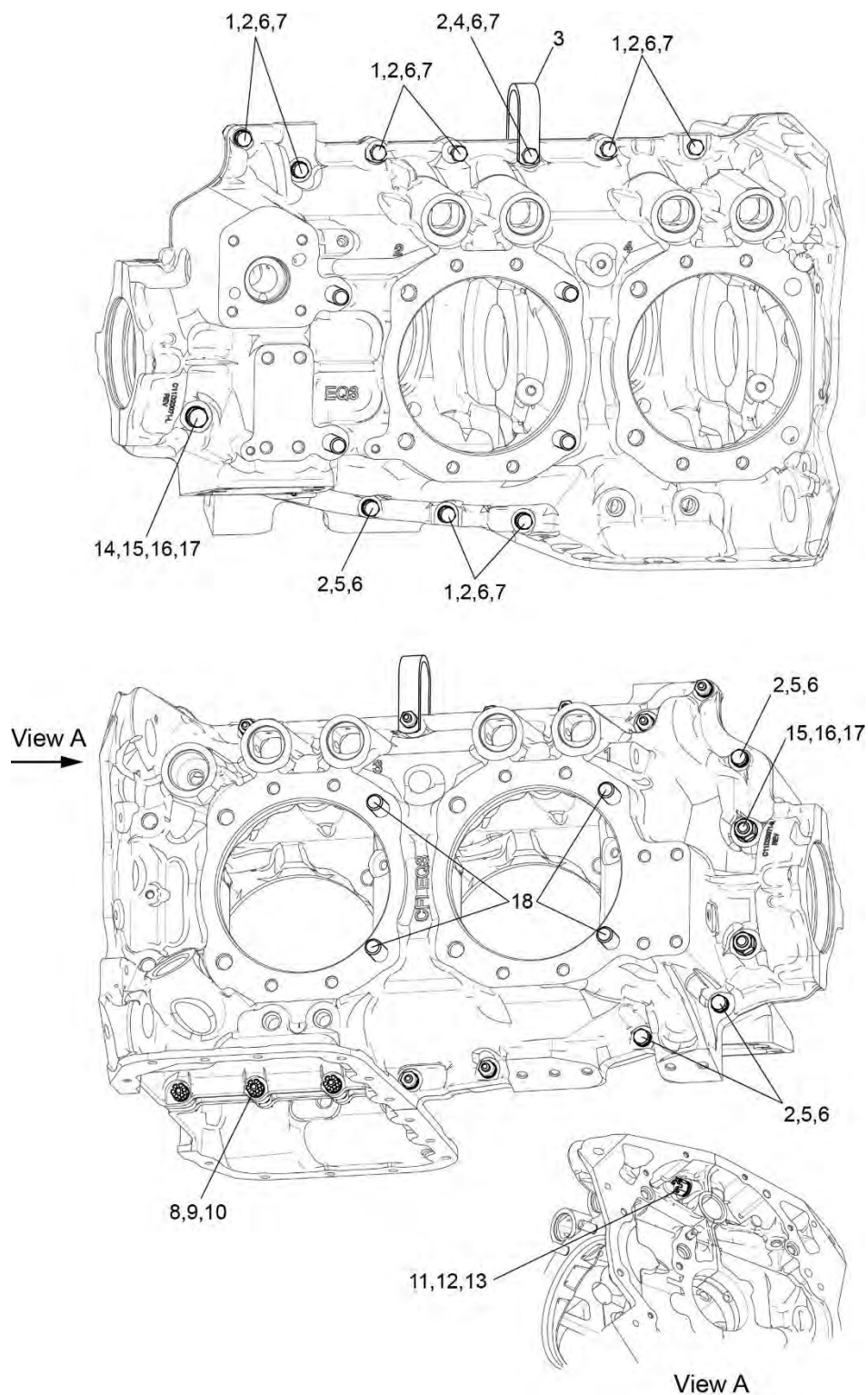


Figure 6B
Crankcase Attaching Parts (Fixed Pitch Propeller)

POWER SECTION**FIGURE 6B - CRANKCASE ATTACHING PARTS (FIXED PITCH PROPELLER)**

Figure Item	Code	Part Number	Description	Units per Assembly
1		LW-25-1.50	BOLT, 1/4-20 x 1-1/2 long, hex. head	8
2		STD-8	WASHER, 1/4 plain	19
3		60803	STRAP, Lifting	1
4		LW-25-1.75	BOLT, 1/4-20 x 1-3/4 long, hex. head	1
5		LW-25-1.13	BOLT, 1/4-20 x 1-1/8 long, hex. head	3
6		STD-160	WASHER, 1/4 lock, internal teeth	12
7		STD-1411	NUT, 1/4-20 plain	9
8		LW-25S1.50	BOLT, 1/4-20 x 1-1/2 long, hex. head, drilled	3
9		STD-8	WASHER, 1/4 plain	AR
10		STD-2249	NUT, 1/4-20 slotted	3
11		STD-33	WASHER, 3/8 plain	3
12		NAS1149F0632P	WASHER, 3/8 plain (thin)	1
13		STD-872	NUT, 3/8-24 slotted	1
14		AN6-34A	BOLT, 3/8-24 x 3-37/64 long, hex. head	2
15		STD-33	WASHER, 3/8 plain	4
16		STD-678	WASHER, 3/8 lock, internal teeth	2
17		STD-596	NUT, 3/8-24 plain	2
18		76220	STUD, 1/2-20 x 10-45/64 long	4
AR as required				

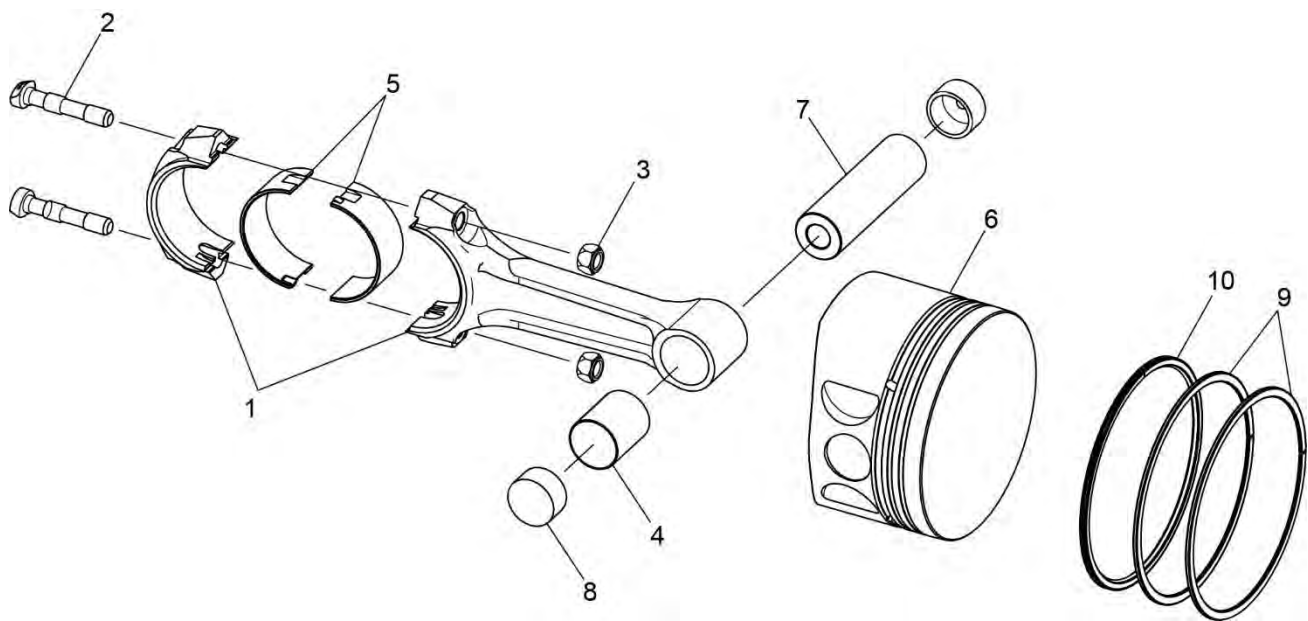


Figure 7
Connecting Rods, Pistons and Ring Assemblies

CYLINDER SECTION

FIGURE 7 - CONNECTING RODS, PISTONS AND RING ASSEMBLIES

Figure Item	Code	Part Number	Description	Units per Assembly
1		77450	CONNECTING ROD ASSEMBLY	4
		LW-11750	CONNECTING ROD ASSY (Fixed Pitch Prop)	4
2	*	75061	BOLT, Connecting rod	8
	P	14S23890	BOLT, Connecting rod	8
3		LW-12186	NUT, Connecting rod bolt	8
4		01K28983	BUSHING, Connecting rod, upper	4
5		18M23887	BEARING, Connecting rod	8
		18M26105	BEARING, Connecting rod (Fixed Pitch Prop)	8
6		14D23914	PISTON, Compression ratio, 9.00:1	4
7		LW-14078	PIN, Piston	4
8		72198	PLUG, Piston pin	8
9		74241	RING, Piston, compression, 5.125 bore	8
10		14H29884	RING ASSEMBLY, Piston, oil regulating, expander type	4
P Lycoming proprietary part. Listed for reference purposes only, cannot be purchased. * Service use only.				

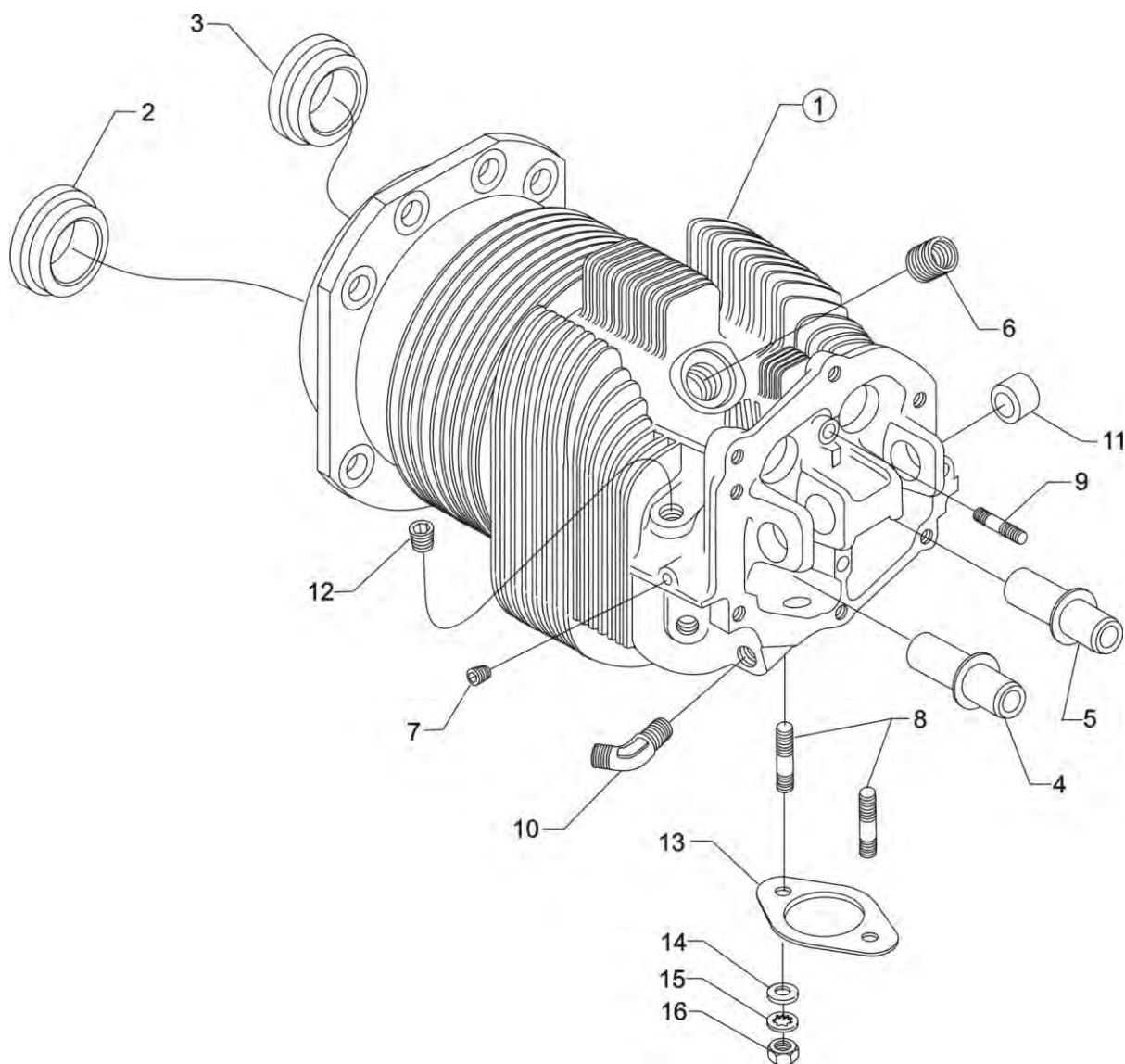


Figure 8
Cylinder Assembly

CYLINDER SECTION
FIGURE 8 - CYLINDER ASSEMBLY

Figure Item	Code	Part Number	Description	Units per Assembly
1		16A30080-03	CYLINDER & HEAD ASSEMBLY	4
2		72057	SEAT, Intake valve	4
3		72058	SEAT, Exhaust valve	4
4		76943	GUIDE, Valve, intake	4
5		16R22126	GUIDE, Valve, exhaust	4
6		66796	INSERT, Spark plug, 18 x 1.5 MM	8
7		STD-1353	INSERT, No. 10-24 UNC x 3/8 long	4
8		31C-12	STUD, 5/16-18 x 1-1/2 long	8
9		25C-8	STUD, 1/4-20 x 1.00 long	4
10		MS20823-6D	ELBOW, 45 degree, 3/8 flared tube	4
11		66610	BUSHING, Rocker shaft	16
12	*	1102	PLUG, 1/8-27 NPT, Allen head	4
13		77611	GASKET, Exhaust flange	4
14		STD-35	WASHER, 5/16 plain	8
15		STD-475	WASHER, 5/16 lock, internal teeth	8
16		STD-1410	NUT, 5/16-18 plain	8
* Used on installations without priming lines.				

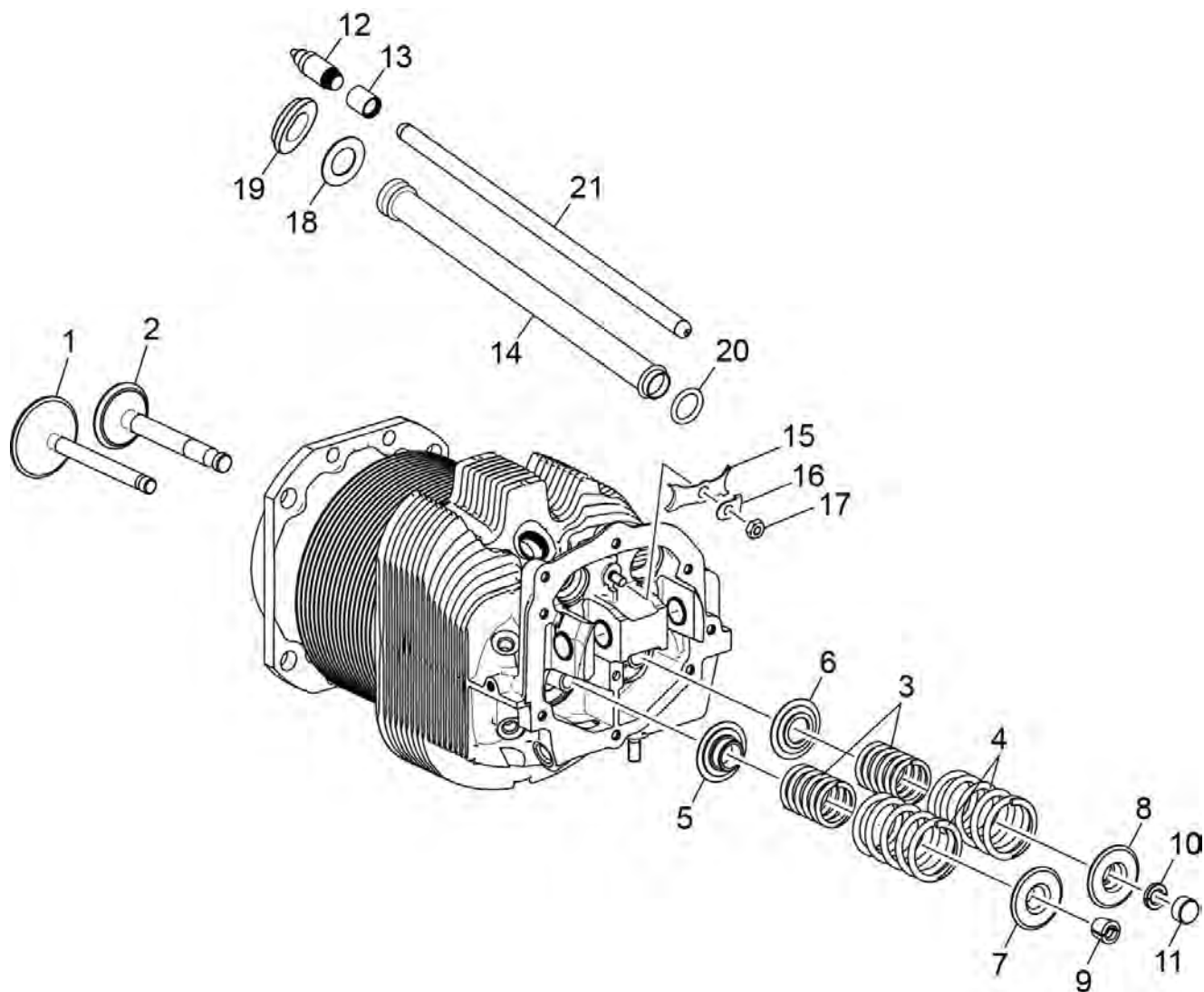


Figure 9
Valve Assembly and Related Parts

CYLINDER SECTION**FIGURE 9 - VALVE ASSEMBLY AND RELATED PARTS**

Figure Item	Code	Part Number	Description	Units per Assembly
1		17A23938	VALVE, Intake	4
2		17B23936	VALVE, Exhaust (rotator type)	4
3		17D29055	SPRING, Valve, auxiliary	8
4		17D29060	SPRING, Valve, outer	8
5		65441	SEAT, Valve spring, lower intake	4
6		LW-13323	SEAT, Valve spring, lower exhaust	4
7		LW-10077	SEAT, Valve spring, upper intake	4
8		LW-16475	SEAT, Valve spring, upper, exhaust (rotator type)	4
9		60009	KEY, Valve	8
10		17C21191	KEY, Valve, exhaust	8
11		17C19386	CAP, Valve stem, exhaust (rotator type)	4
12		15B26066	PLUNGER ASSEMBLY, Hydraulic lifter	8
13		15B21319	SOCKET, Hydraulic tappet	8
14		15G23461	SHROUD TUBE ASSEMBLY, Push rod	8
15		LW-14995	SPRING, Shroud tube	4
16		LW-12272	LOCKPLATE, Shroud tube	4
17		STD-1411	NUT, 1/4-20 plain	4
18		01L23459	WASHER, 25/32 I.D. x 1-3/8 O.D. x 1/32 thick	8
19		06A23493	SEAL, Shroud tube	8
20		70310	SEAL, Shroud tube	8
21	❖	15F28835-28	ROD ASSEMBLY, Push	AR
	❖	15F28835-29	ROD ASSEMBLY, Push	AR
	❖	15F28835-30	ROD ASSEMBLY, Push	AR
	❖	15F28835-31	ROD ASSEMBLY, Push	AR
	❖	15F28835-32	ROD ASSEMBLY, Push	AR
	❖	15F28835-33	ROD ASSEMBLY, Push	AR
	❖	15F28835-34	ROD ASSEMBLY, Push	AR
AR - as required ❖ See latest revision of Service Instruction No. 1060 for complete push rod application.				

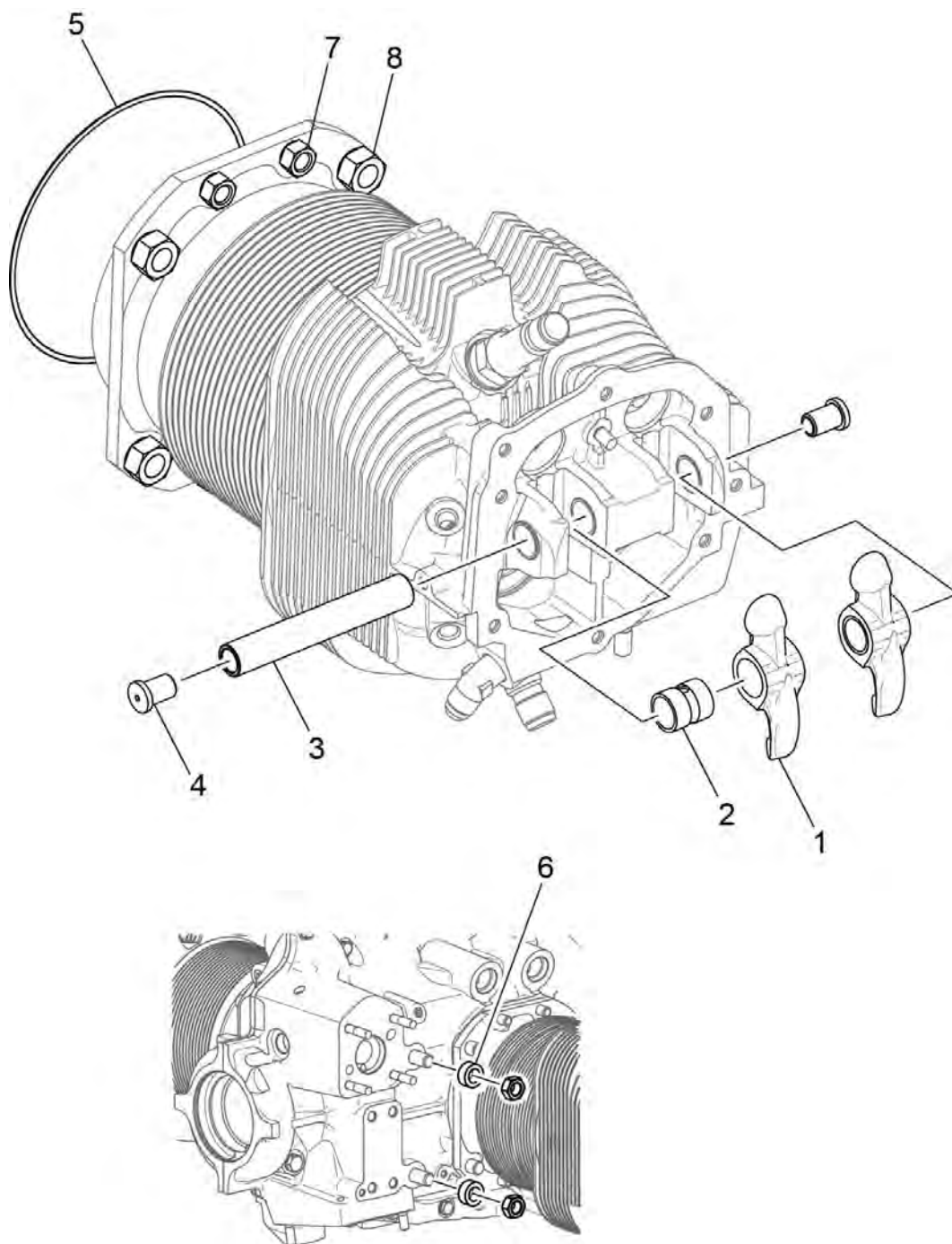


Figure 10
Cylinder Related Parts

CYLINDER SECTION
FIGURE 10 - CYLINDER RELATED PARTS

Figure Item	Code	Part Number	Description	Units per Assembly
1	❖	17F19357	ROCKER ASSEMBLY, Valve	8
2		74637	BUSHING, Valve rocker	1
3		LW-13790	SHAFT, Valve rocker	4
4		LW-12892	THRUST BUTTON, Rocker shaft	8
5		71481	RING, Oil seal, 4-27/32 ID x 3/32 diameter section	4
6		74887	SPACER, 33/64 I.D. x 7/8 O.D. x 3/8 thick	2
7		383-B	NUT, 3/8-24 plain	16
8		STD-2090	NUT, 1/2-20 plain	18
❖ Due to the size of the area where the part number is stamped, the last five digits (19357) could be all that is shown of the part number.				

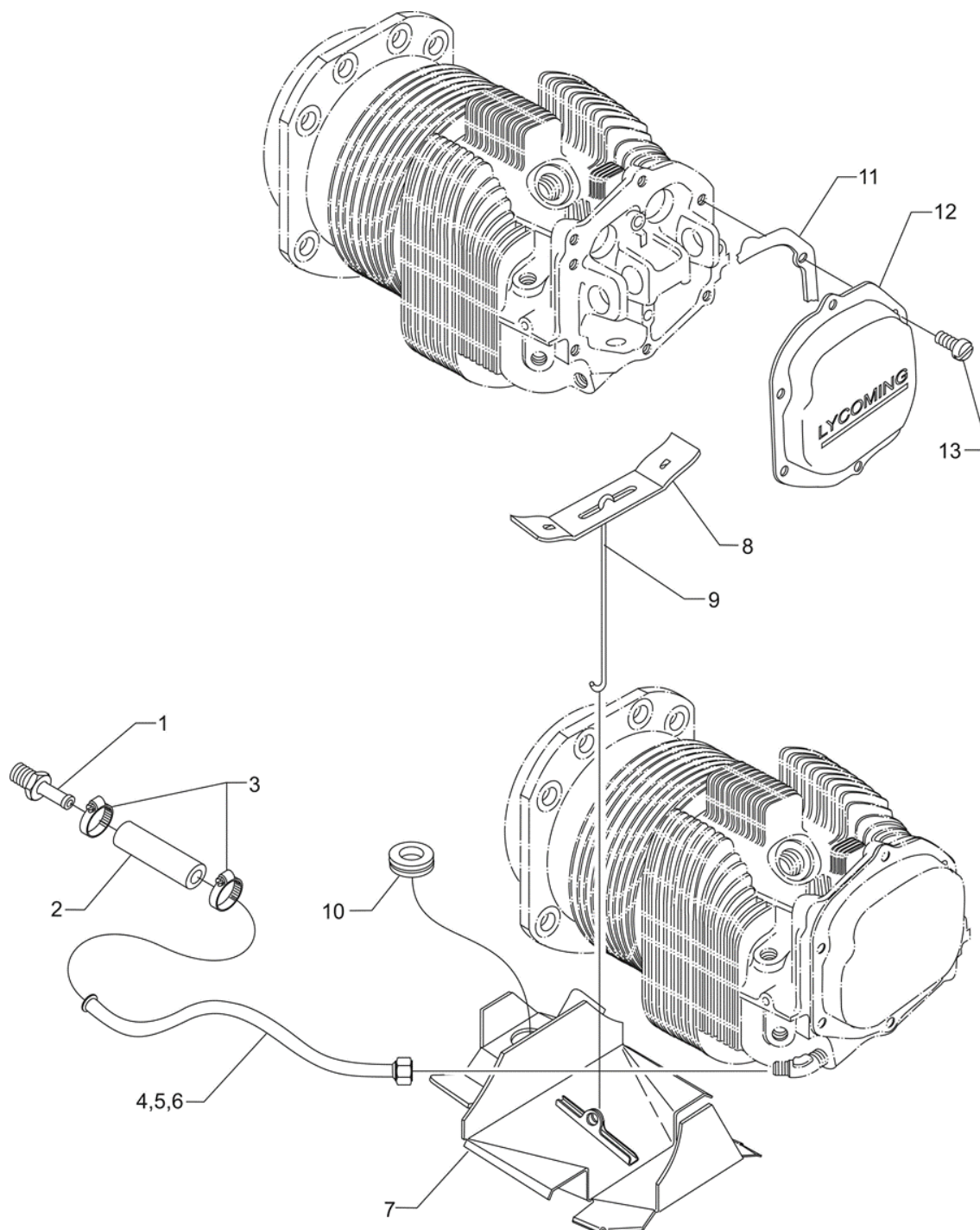


Figure 11
Cylinder Head Drain Tubes, Intercylinder Cooling Baffles, and Rocker Box Covers

CYLINDER SECTION**FIGURE 11 - CYLINDER HEAD DRAIN TUBES, INTERCYLINDER COOLING BAFFLES,
AND ROCKER BOX COVERS**

Figure Item	Code	Part Number	Description	Units per Assembly
1		STD-684	NIPPLE, Straight, 3/8 I.D. hose	4
2		STD-1821	HOSE, 3/8 x 2-1/2 long	4
3		LW-15592-5-04	CLAMP, Hose, 7/16 O.D.	8
4		68759	TUBE ASSEMBLY, Cylinder head oil drain, cyl. No. 1	1
5		68760	TUBE ASSEMBLY, Cylinder head oil drain, cyl. No. 2	1
6		68761	TUBE ASSEMBLY, Cylinder head oil drain, cyl. No. 3 & 4	2
7	❖	LW-15839	BAFFLE ASSEMBLY, Intercylinder	1
	▲	LW-16838	BAFFLE ASSEMBLY, Intercylinder	1
8		71611	RETAINER, Intercylinder baffle	2
9		71629	HOOK, Intercylinder baffle retainer	2
10	▲	MS35489-20X	GROMMET (on baffle)	1
11		06B26669	GASKET, Rocker box cover	4
12		17J28868	COVER, Rocker box	4
13		STD-1925	SCREW, 1/4-20 x 5/8 long, pan head, self-locking	24
❖ Install on left side cylinders No. 2 and 4				
▲ Install on right side between cylinders No. 1 and 3				

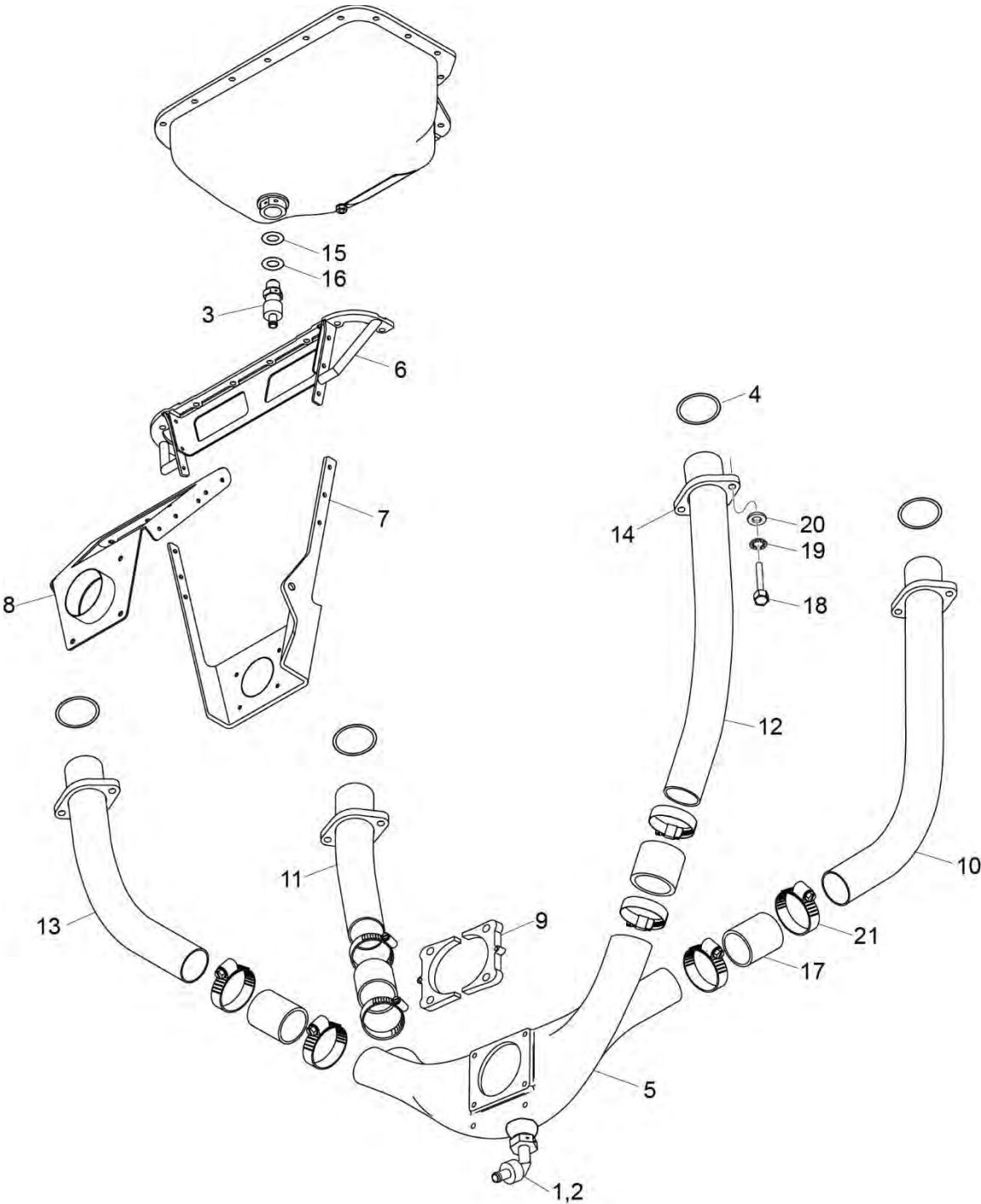


Figure 12
Intake Pipes and Attaching Parts

CYLINDER SECTION

FIGURE 12 – INTAKE PIPES AND ATTACHING PARTS

Figure Item	Code	Part Number	Description	Units per Assembly
1		75444	ADAPTER ASSEMBLY, Fuel drain valve	1
2		AN915-1D	ELBOW, 1/8 npt, internal & external, 45 degree	1
3	*	SP56204-001	FITTING, tank, bulkhead	1
4	*	SP50208-001	O-RING, silicone	4
5	*	SK50380-001	MANIFOLD ASSEMBLY, intake	1
6	*	SK50375-001	SUPPORT, hanger weldment, servo	1
7	*	SK50371-001	BRACKET, servo mount, aft	1
8	*	SK50369-001	SUPPORT, hanger weldment, intake	1
9	*	SK50363-001	MOUNTING LUG, throttle body	2
10	*	SK50362-004	PIPE, induction tube, cyl no. 4	1
11	*	SK50362-003	PIPE, induction tube, cyl no. 3	1
12	*	SK50362-002	PIPE, induction tube, cyl no. 2	1
13	*	SK50362-001	PIPE, induction tube, cyl no. 1	1
14	*	SC50362-001	FLANGE, intake tube	4
15		NAS1149F0963P	WASHER, flat 37/64 ID x 1 1/16 OD x 1/16 thick	1
16		MS35333-46	WASHER, lock, flat 5/8 ID x 1 1/32 OD x 3/64 thick	1
17		STD-1792	HOSE, 1 3/4 ID X 2 3/8 long	4
18		LW-25-1.00	BOLT, 1/4-20 x 1.00 long, hex. head	8
19		STD-160	WASHER, 1/4 lock, internal teeth	8
20		STD-8	WASHER, 1/4 plain	8
21		O7C29123-CT-Y	CLAMP, Hose, Dia. 1 11/16 to 2 1/4, Worm Drive Type	8
* Cub Crafters part number. Must be purchased from Cub Crafters.				

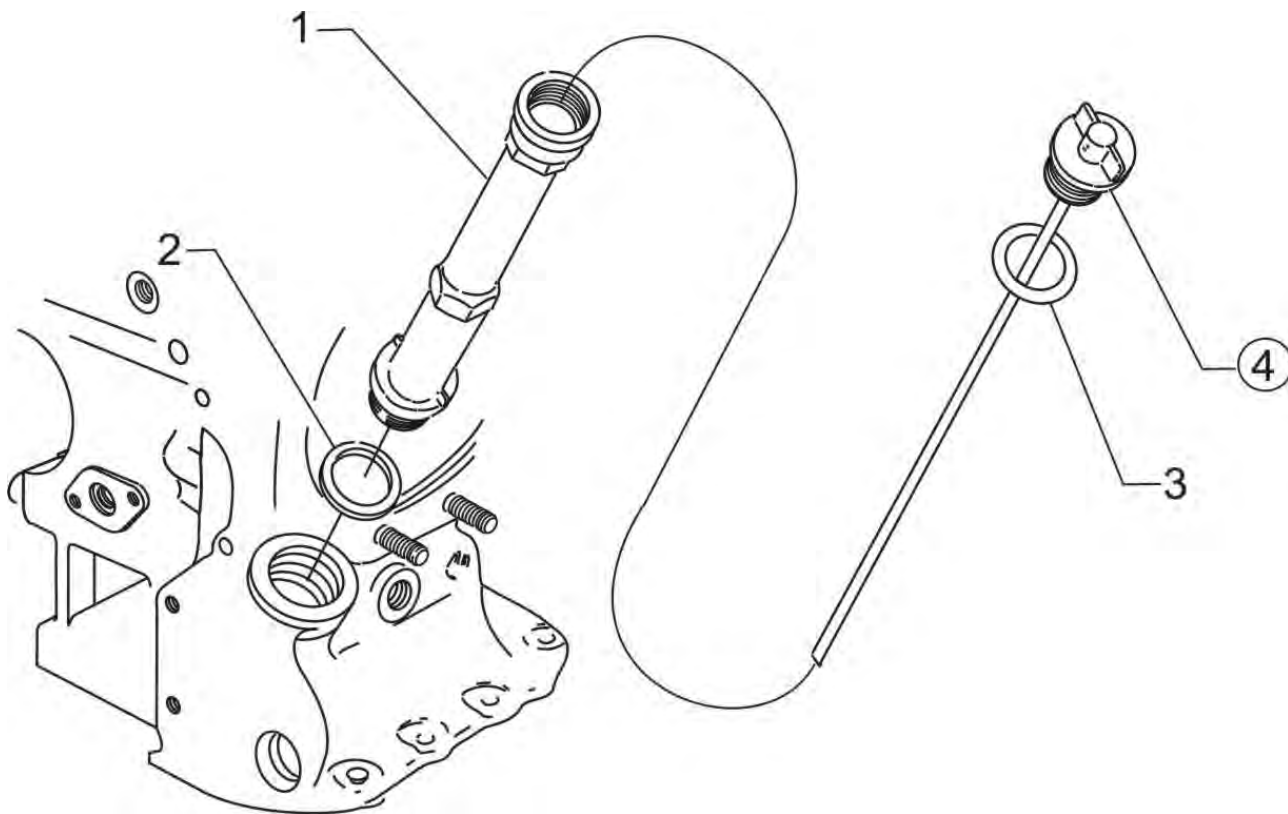


Figure 13
Oil Level Gage

LUBRICATION SYSTEM
FIGURE 13 – OIL LEVEL GAGE

Figure Item	Code	Part Number	Description	Units per Assembly
1		75767	TUBE, Oil level gage, (10 9/16 long)	1
2		72059	GASKET, Oil level gage	1
3		74065	RING, Oil level gage seal	1
4		56C23674-Y	GAGE ASSEMBLY, Oil level	1

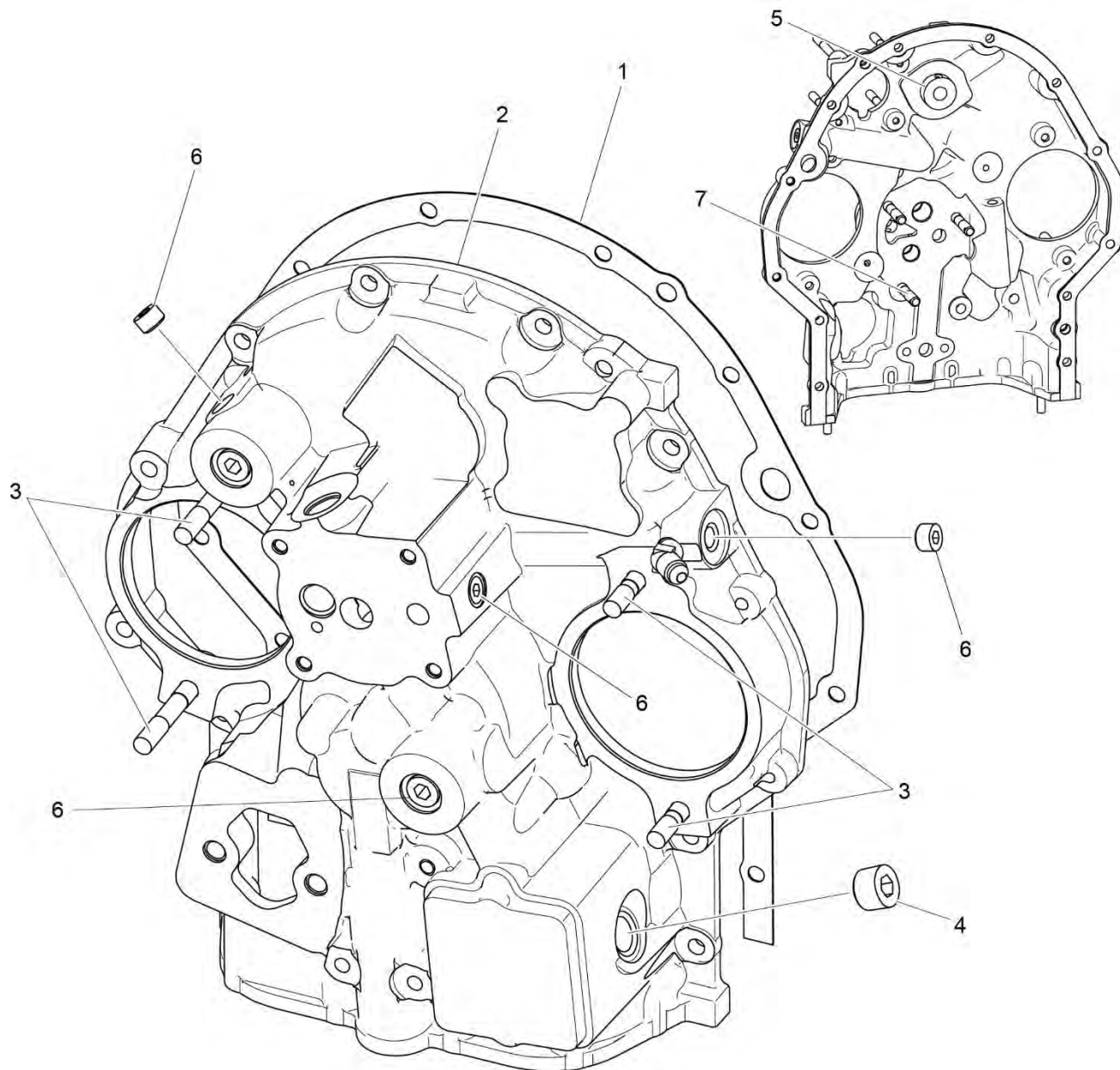


Figure 14
Accessory Housing Assembly

ACCESSORY DRIVES**FIGURE 14 – ACCESSORY HOUSING ASSEMBLY**

Figure Item	Code	Part Number	Description	Units per Assembly
1		73818	GASKET, Accessory housing	1
2		21A26242-37	ASSEMBLY, Accessory housing	1
3		31C-12	STUD, 5/16-18 x 1-1/2 long	4
4		STD-784	PLUG, 3/8-18 NPT, allen head	1
5		76119	SHIELD, Accessory breather oil	1
6		1102	PLUG, 1/8-27 NPT, allen head	4
7		31CD-17	STUD, 5/16-18 x 2-1/8 long, drilled	3

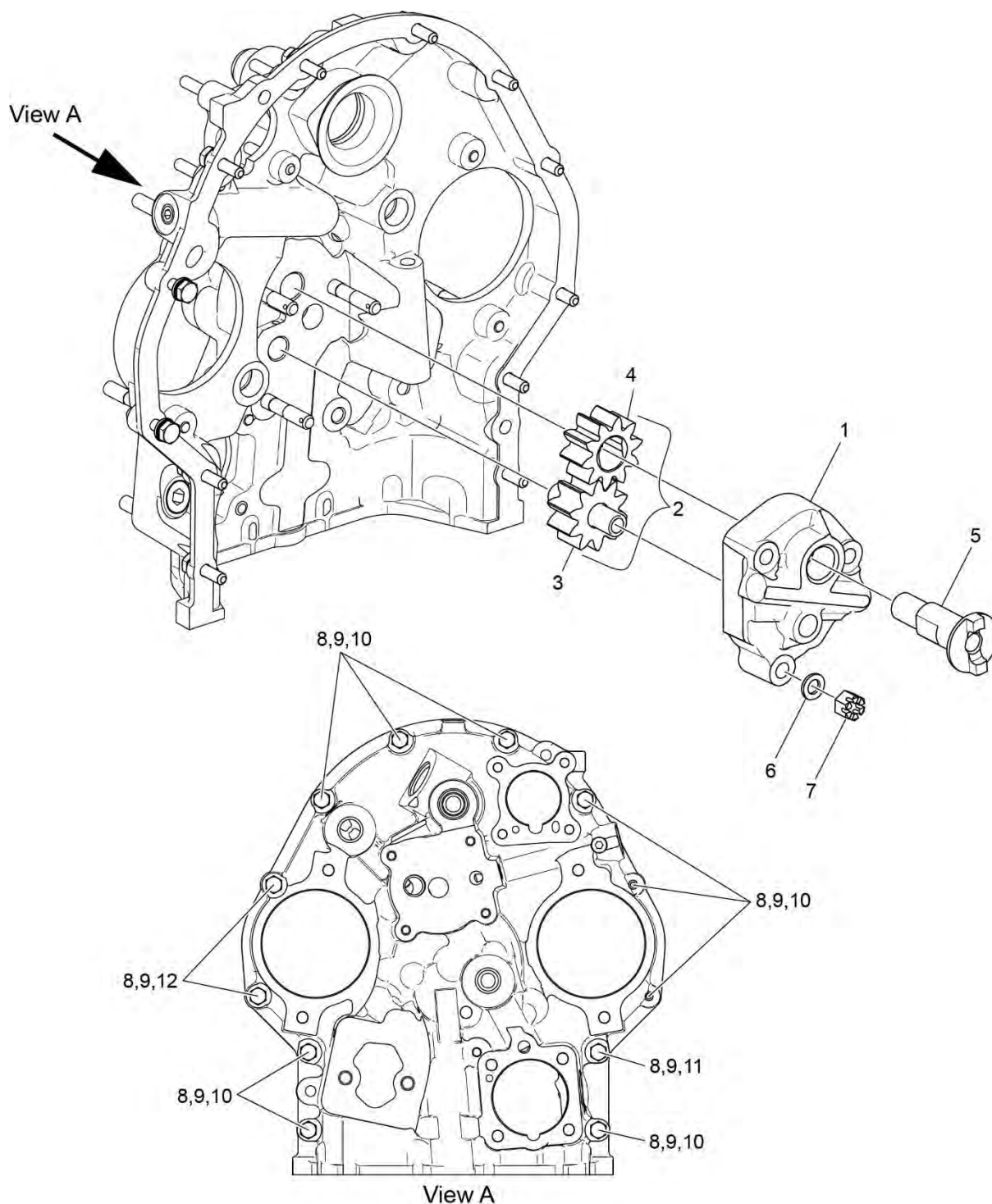


Figure 15
Oil Pump Assembly and Accessory Housing Attaching Parts

ACCESSORY DRIVES**FIGURE 15 – OIL PUMP ASSEMBLY AND ACCESSORY HOUSING ATTACHING PARTS**

Figure Item	Code	Part Number	Description	Units per Assembly
1		51F28531	BODY, Oil pump	1
2	*	05K19423-S	IMPELLER KIT	1
3	*	LW-18110	IMPELLER ASSEMBLY, Pressure pump driven	1
4	*	LW-18109	IMPELLER, Oil pump driving	
5		61174	SHAFT, Oil pump drive	1
6		STD-35	WASHER, 5/16 plain	3
7		STD-1420	NUT, 5/16-18 slotted	3
8		STD-8	WASHER, 1/4 plain	12
9		STD-160	WASHER, 1/4 lock, internal teeth	12
10		LW-25-0.94	BOLT, 1/4-20 x 15/16 long, hex. head	9
11		LW-25-1.13	BOLT, 1/4-20 x 1-1/8 long, hex. head	1
12		LW-25-1.44	BOLT, 1/4-20 x 1-7/16 long, hex. head	2
* To ensure impellers are replaced together, oil pump impellers are available only as kit P/N 05K19423-SS				

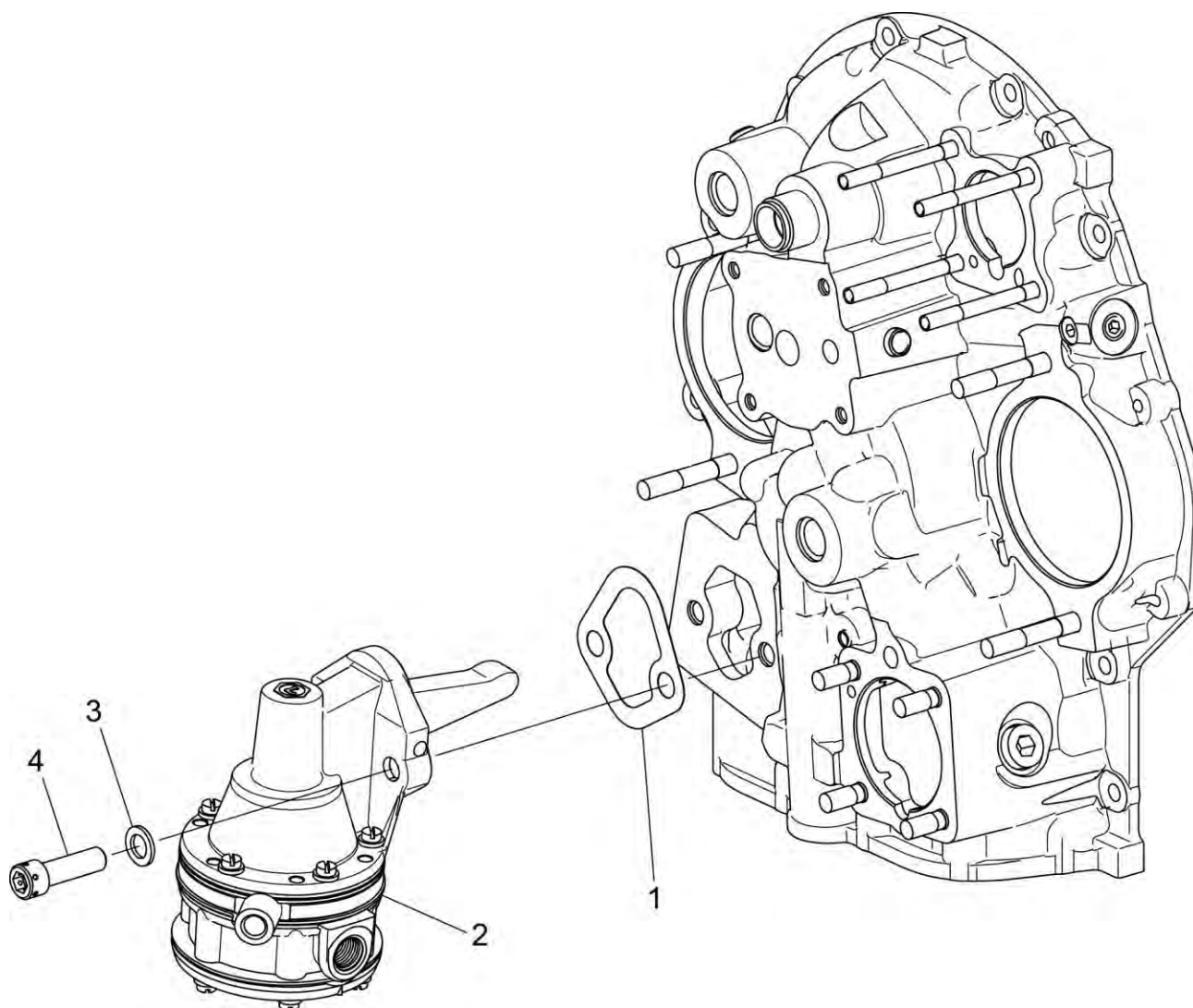


Figure 16
Fuel Pump Assembly and Attaching Parts

ACCESSORY DRIVES**FIGURE 16 – FUEL PUMP ASSEMBLY AND ATTACHING PARTS**

Figure Item	Code	Part Number	Description	Units per Assembly
1		60096	GASKET, Fuel pump	1
2		62B26931	FUEL PUMP, High pressure	1
3		STD-33	WASHER, 3/8 plain	2
4		STD-1882	SCREW, 3/8-16 x 1-9/32 long, socket head, drilled	2

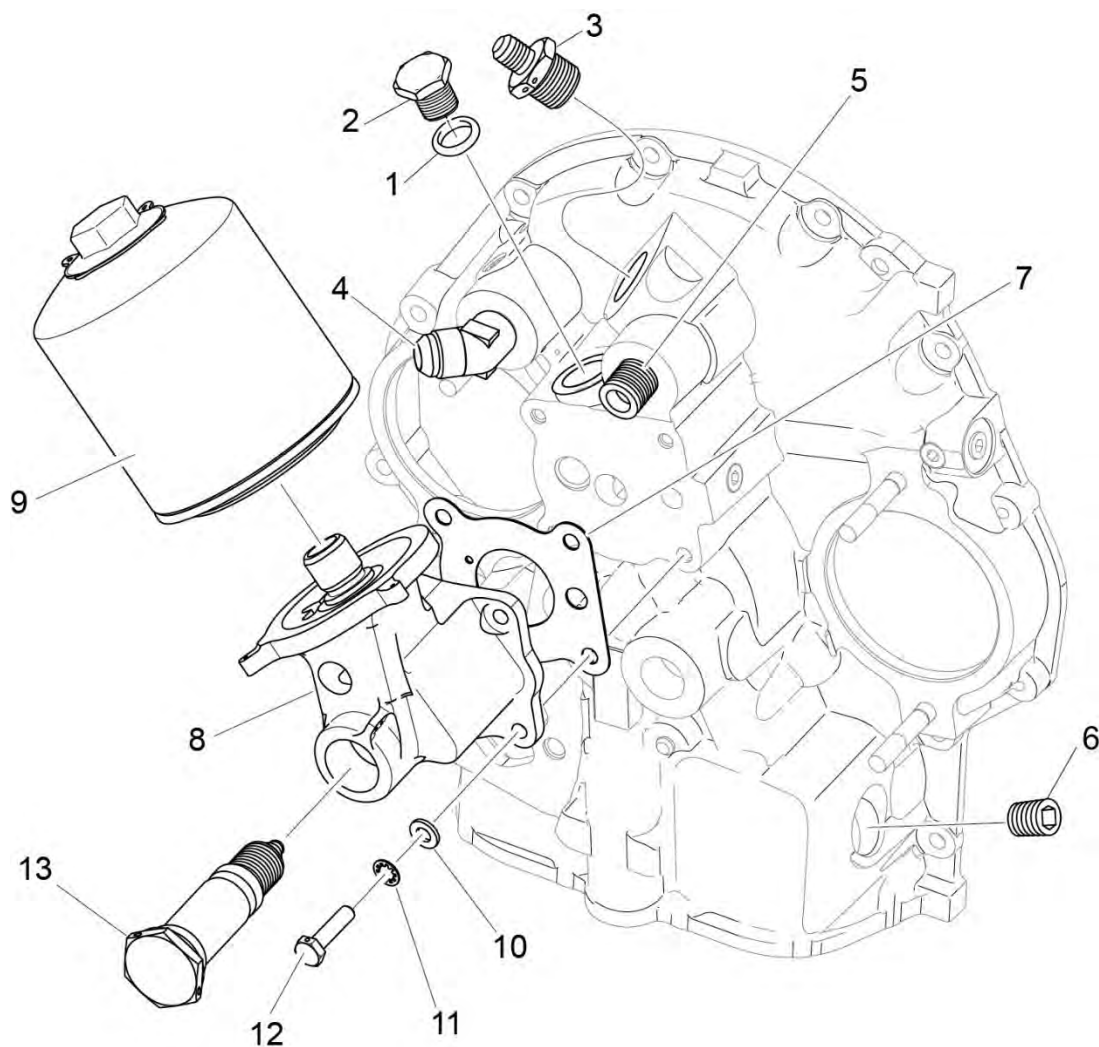


Figure 17
Oil Filter Assembly, Oil Cooler Bypass Valve and Breather Fitting

ACCESSORY DRIVES

**FIGURE 17 – OIL FILTER ASSEMBLY, OIL COOLER BYPASS VALVE
AND BREATHER FITTING**

Figure Item	Code	Part Number	Description	Units per Assembly
1		06E19769-0.63	GASKET, Annular, 5/8 I.D.	1
2		62417	PLUG, Oil cooler bypass	1
3	*	AN816-8D	NIPPLE, 3/8 ANPT to 1/2 tube	1
4	*	MS20823-8D	ELBOW, 45 degree, 1/2 flared tube and 3/8	1
5	**	SP56202-102	FITTING, Adapter, NPT to flare	1
6		STD-71	PLUG, 3/8-18 NPT, socket head	1
7		06B29860	GASKET, Oil pressure housing	1
8		54B28395	BASE ASSEMBLY, Oil filter adapter	1
9		54D28353	OIL FILTER, Short, internal bypass (spin on type), CH48108-1	1
10		STD-8	WASHER, 1/4 plain	4
11		STD-160	WASHER, 1/4 lock, internal teeth	4
12		LW-25-1.00	BOLT, 1/4-20 x 1.00 long, hex. head	4
13		53E22144	VALVE ASSEMBLY, Temperature control oil cooler bypass with gasket	1

* Some configurations of the CC363i/CC363i-FP will have the elbow P/N MS20823-8 installed in the upper oil cooler boss and the nipple P/N AN816-8 installed in the lower oil cooler boss. Other configurations will have the nipple P/N AN816-8 installed in the upper oil cooler boss and the elbow P/N MS20823-8 installed in the lower oil cooler boss

** Cub Crafters part number. Must be purchased from Cub Crafters.

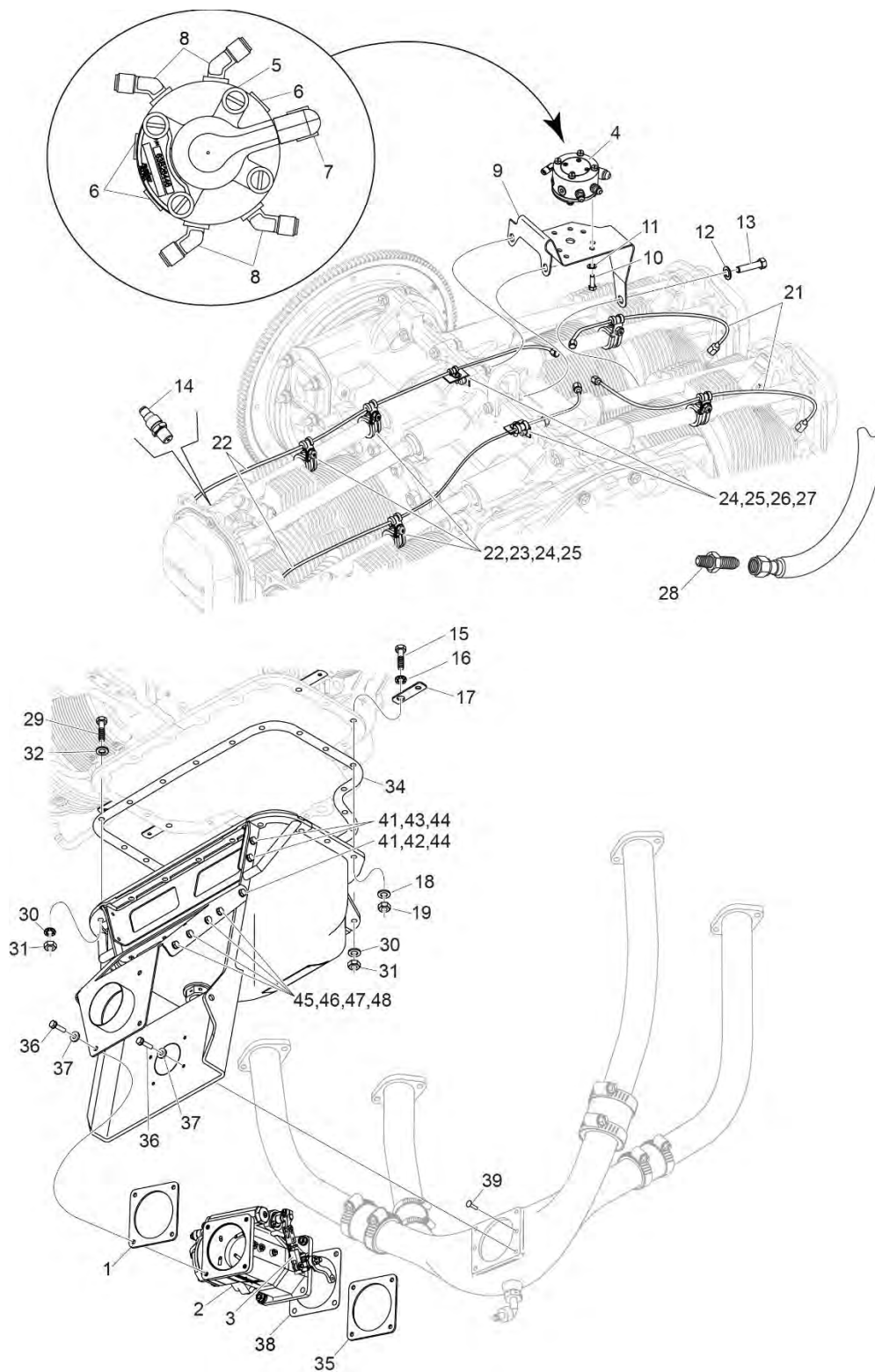


Figure 18
Fuel Injector, Fuel Manifold, Fuel Lines, Air Induction

FUEL DISTRIBUTION**FIGURE 18 – FUEL INJECTOR, FUEL MANIFOLD, FUEL LINES, AIR INDUCTION**

Figure Item	Code	Part Number	Description	Units per Assembly
1		66224	GASKET, Carburator	2
2	V	61J29118-Y	INJECTOR, Fuel, AVX-NNSS5	1
3		05L31556-Y	LEVER, throttle, 2.000 LG	1
		O5L31557-Y	LEVER, throttle, 1-7/8 LG (Fixed Pitch Prop)	1
4		63B29120-Y	MANIFOLD ASSEMBLY, Fuel	1
5		63B29119-Y	MANIFOLD, Fuel (4 PSI)	1
6		1102	PLUG, 1/8-27 NPT, allen head	3
7		MS20822-4	ELBOW, 1/4 tube, 1/8 NPT, 90°	1
8		AN791-2	ELBOW, union, 45 degree, 1/8 tube	4
9		75009	BRACKET, fuel manifold	1
10		STD-82	SCREW, No. 10-24 x 1/2 long, fill. Head	4
11		STD-251	WASHER, No. 10 lock, internal teeth	4
12		STD-160	WASHER, 1/4 lock, internal teeth	1
13		LW-25-0.50	BOLT, 1/4-20 X 1/2 long, hex	1
14		63C26450	NOZZLE, Injection, Low (AV2524864-2)	4
15		STD-2329	BOLT, 5/16-24 x 1-3/16 long, drilled head	4
16		STD-35	WASHER, 5/16 plain	4
17	*	C81262-19	LINK	4
18		STD-35	WASHER, 5/16 plain	4
19		STD-1410	NUT, 5/16-18 plain	4
20		STD-475	WASHER, 5/16 lock, internal teeth	4
21		LW-12098-0-140	TUBE ASSEMBLY, Fuel line	2
22		LW-12098-0-210	TUBE ASSEMBLY, Fuel injector line	2
23		LW-16266-10-75	CLAMP, 3/4 ID for #10 screw	4
24		LW-16266-10-13	CLAMP, 1/8 diameter for #10 screw	6
25		STD-860	SCREW, No. 10-32 x 5/8 long, fill. head	6
26		STD-670	LOCKNUT, No. 10-32	6
V Vendor Prime Manufacturer part * Cub Crafters part number. Must be purchased from Cub Crafters.				

FUEL DISTRIBUTION

FIGURE 18 – FUEL INJECTOR, FUEL MANIFOLD, FUEL LINES, AIR INDUCTION (CONT.)

Figure Item	Code	Part Number	Description	Units per Assembly
27		73136	BRACKET, Extension, fuel injector link	2
28		75739	NIPPLE, 3/8 Flared tube	1
29		LW-25-0.94	BOLT, 1/4-20 x 15/16 long hex	12
30		STD-696	WASHER, 1/4 plain (thin)	4
31		STD-1411	NUT, 1/4-20 plain	4
32		STD-160	WASHER, 1/4 lock, internal teeth	12
33		STD-8	WASHER, 1/4 plain	12
34		LW-13353	GASKET, Oil sump	1
35		SK50381-001	GASKET, Intake manifold	1
36		LW-25H0.63	BOLT, 1/4-20 x 5/8 long hex drilled	4
37		STD-8	WASHER, 1/4 plain	4
38		77504	GASKET, Fuel injector	1
39		MS24693-C27	SCREW, #10-32 unc-2a x 7/16 long, flat head	2
40		STD-425	WASHER, #10 plain	4
41		STD-1650	BOLT, #10-32 x 21/32 long	6
42		STD-425	WASHER, #10 plain	4
43		STD-28	WASHER, #10 plain	8
44		MS21045-3	NUT, #10-32 NF-3, self-locking	6
45		LW-25-1.25	BOLT, 1/4-20 X 1 1/4 long hex	8
46		STD-160	WASHER, 1/4 lock, internal teeth	8
47		STD-8	WASHER, 1/4 plain	8
48		STD-696	WASHER, 1/4 plain (thin)	8

This page intentionally left blank.

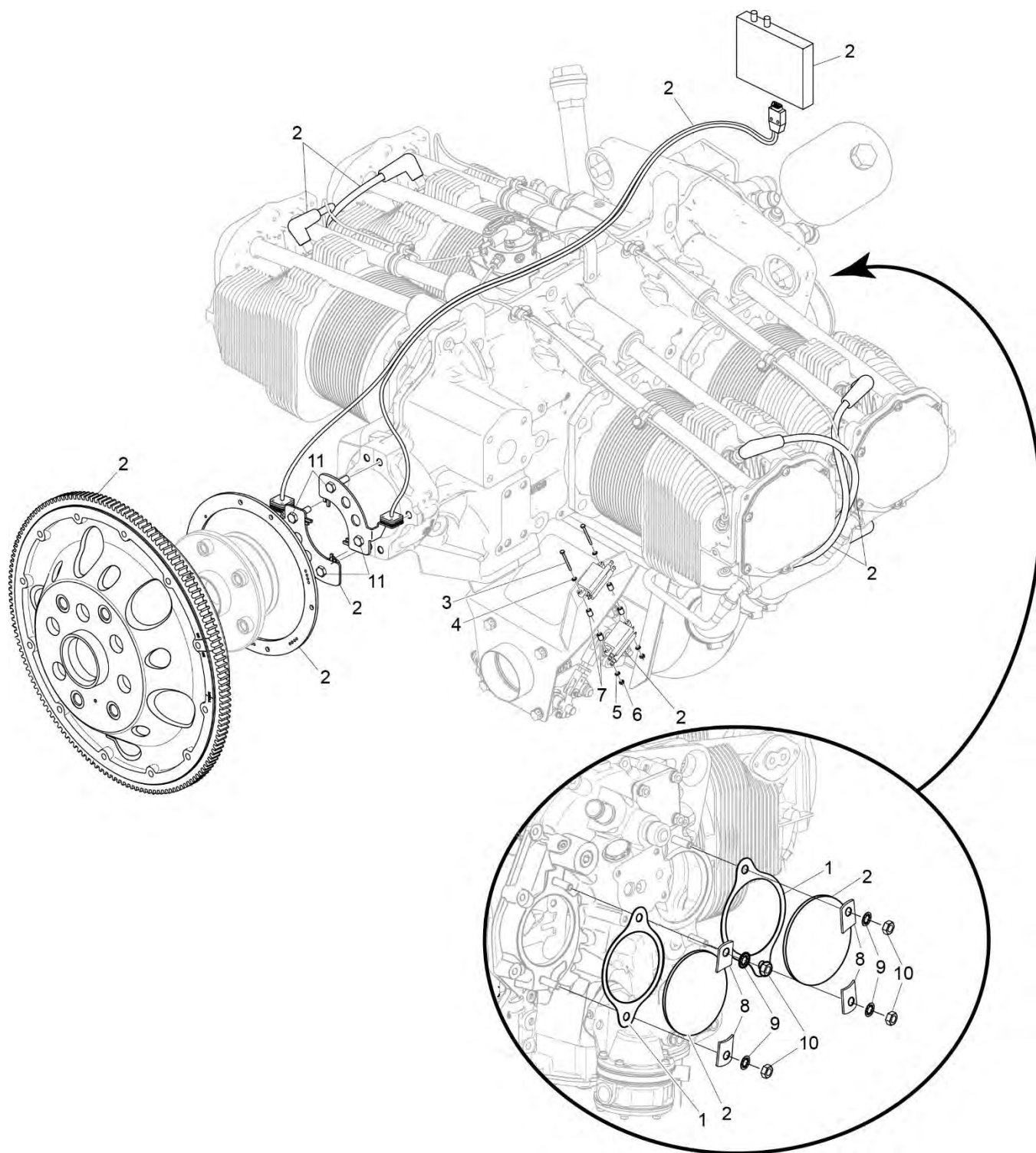


Figure 19 Lightspeed Ignition

ELECTRONIC IGNITION**FIGURE 19 – LIGHTSPEED IGNITION**

Figure Item	Code	Part Number	Description	Units per Assembly
1		LW-12681	GASKET, magneto	2
2	*	1.334-D-H-22	IGNITION, electronic, lightspeed dual plasma III	1
3		AN4-30A	BOLT, 1/4-28UNF X 3 1/32 long	4
4		STD-425	WASHER, #10 plain	16
5		STD-8	WASHER, 1/4 plain	8
6		STD-673	NUT, 1/4-28 self-locking	4
7	**	SK51368-001	BUSHING	8
8		66M21195	CLAMP, magneto, M3741	4
9		STD-475	WASHER, 5/16 lock, internal teeth	4
10		STD-1410	NUT, 5/16-18 plain	4
11		LW-25H0.63	BOLT, 1/4-20 x 5/8 long, hex, drilled	4
* Light Speed Engineering part number. Must be purchased from Light Speed Engineering. ** Cub Crafters part number. Must be purchased from Cub Crafters.				

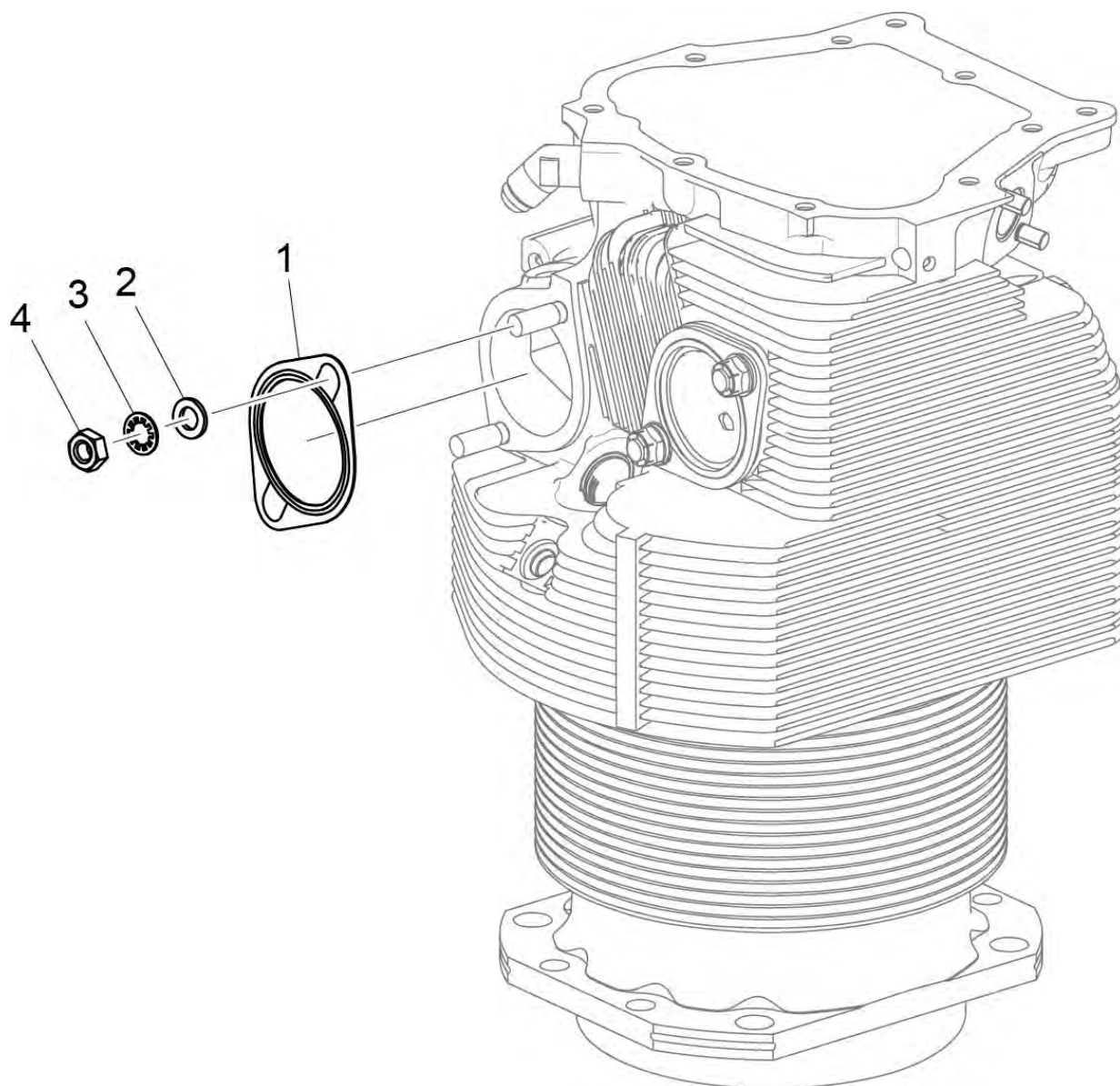


Figure 20
Exhaust Gasket and Flange Attaching Parts

EXHAUST SYSTEM**FIGURE 20 – EXHAUST GASKET AND FLANGE ATTACHING PARTS**

Figure Item	Code	Part Number	Description	Units per Assembly
1		77611	GASKET, Exhaust flange	4
2		STD-35	WASHER, 5/16 plain	8
3		STD-475	WASHER, 5/16 lock, internal teeth	8
4		STD-1410	NUT, 5/16-18 plain	8

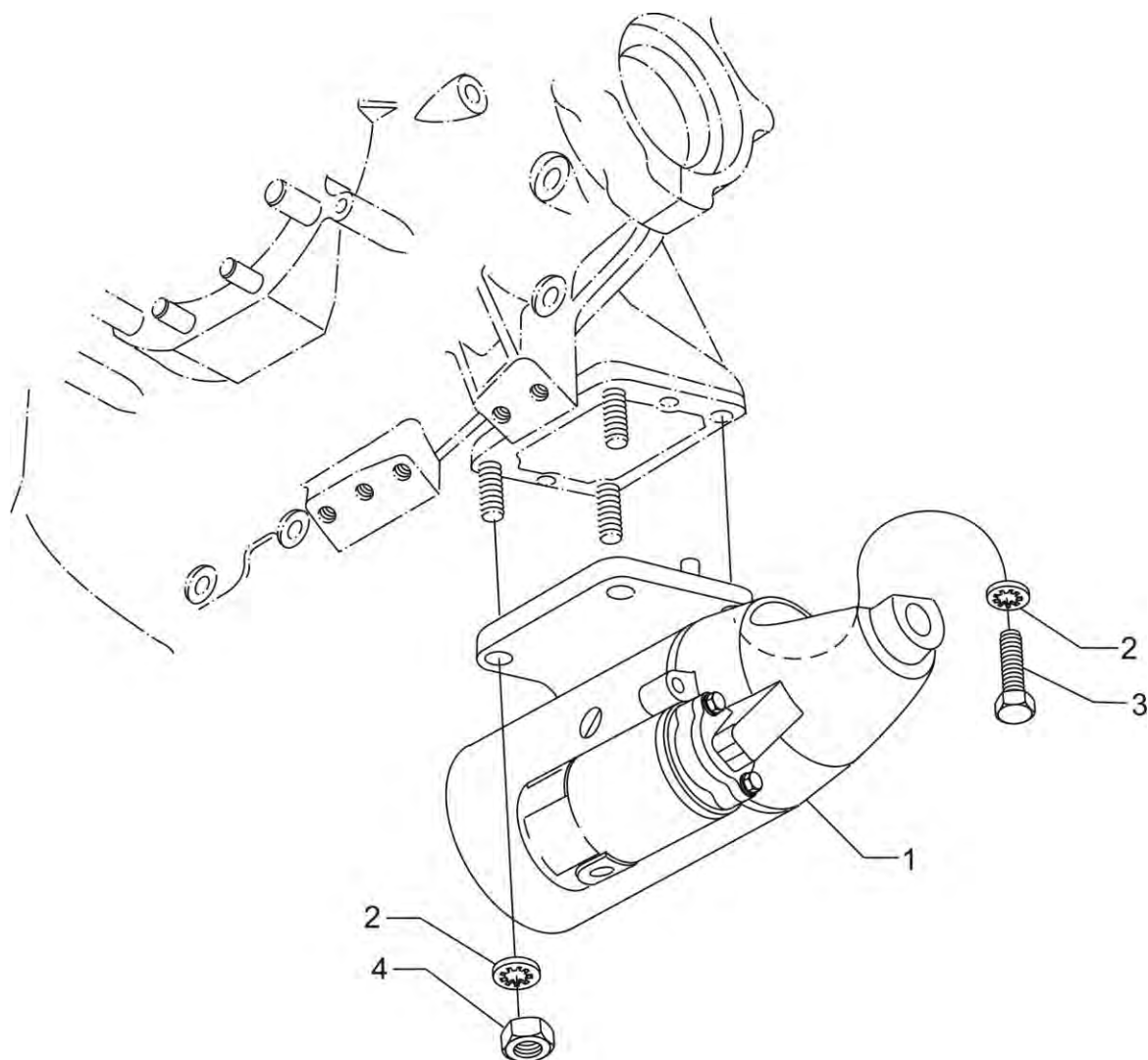


Figure 21
Starter Motor and Attaching Parts

CRANKING**FIGURE 21 - STARTER MOTOR AND ATTACHING PARTS**

Figure Item	Code	Part Number	Description	Units per Assembly
1	V	31A22104	STARTER, Sky-Tec, V 149-12LS	1
2		STD-475	WASHER, 5/16 lock, internal teeth	4
3		LW-31-0.94	BOLT, 5/16-18 x 15/16 long, hex. head	1
4		STD-1410	NUT, 5/16-18 plain	3
<p>V Vendor Prime Manufacturer part</p> <p><u>NOTE:</u> See latest revision of Lycoming Service Instruction No. 1154 for complete listing of FAA approved starters, generators, alternators, regulators and relays.</p>				

SERVICE KIT SECTION**SEAL AND GASKET SET**

PART NO.	PART NAME	Qty.
75439-1	KIT - SEAL AND GASKET SET	1
AN901-8A	GASKET, Metal tube connect seal	1
LW-10332	LOCKPLATE, Crankshaft gear	1
LW-12272	LOCKPLATE, Shroud tube	4
LW-12681	GASKET, Magneto	2
06B23862	GASKET, Oil filter adapter	1
LW-13353	GASKET, Oil sump	1
LW-13792	SEAL, Crankshaft oil	1
LW-14260	SEAL, Tachometer drive oil	1
LW-14995	SPRING, Shroud tube	4
LW-18639	LOCKPLATE, Crankshaft gear	1
LW-18661	SEAL, Shroud tube	8
70310	SEAL, Shroud tube	8
STD-475	WASHER, 5/16 lock, internal teeth	4
STD-213	SEAL, Oil, 3/4 I.D. x 1-3/8 O.D.	1
06A19956	SEAL, Oil, 7/8 I.D. x 1-1/2 O.D.	1
06E19769-0.63	GASKET, Annular, 5/8 I.D.	2
06E19769-1.00	GASKET, Annular, 1.00 I.D.	1
06E19769-1.25	GASKET, Annular, 1-1/4 I.D.	1
1691-C	GASKET, Fuel pump	1
60096	GASKET, Fuel pump	1
61173	GASKET, Oil pressure housing	1
61183	GASKET, Accessory adapter	1
62224	GASKET, Magneto adapter	3
66224	GASKET, Fuel injector	2
68315	GASKET, Accessory drive adapter	1
69164	GASKET, Fuel pump adapter	1
69345	SPACER	4
69551	GASKET, Accessory drive adapter	1
70310	SEAL, Shroud tube	8
70455	GASKET, 3/4 I.D. x 1-1/8 O.D.	1
71481	RING, Oil seal, 3/32 diameter x 4-27/32 I.D.	4
71973	GASKET, 2 bolt flange	4
72053	GASKET, Governor	2
72059	GASKET, Oil level gage	1

SERVICE KIT SECTION (CONT.)**SEAL AND GASKET SET (CONT.)**

75439-1	KIT – SEAL AND GASKET SET (CONT.)	1
72075	SEAL, Oil, 3/32 section x 29/64 I.D.	6
72078	LOCKPLATE, 5/16 bolt	2
72091	RING, Oil seal, 3/8 I.D. x 7/64 diameter	2
72220	GASKET, Oil level gage	1
72312	RING, Oil seal, 1.00 x 1-5/16	1
72829	LOCKPLATE, 1/4 bolt x 1-3/4	1
73383	LOCKPLATE, 5/16 bolt x 1.00	2
73817	LOCKPLATE, 1/4 bolt x 1-3/4	2
73818	GASKET, Accessory housing	1
74065	RING, Oil level gage seal	1
74068	RING, Oil level gage plug	1
06B26669	GASKET, Rocker box cover (silicone)	4
76510	GASKET, Oil cooler bypass valve	1
76940	SEAL, Crankshaft	1
77154	GASKET, Carburetor	1
77611	GASKET, Exhaust flange	4
8313	GASKET, Vacuum pump	1
77569	RING, Seal, intake pipe	4
MS29512-04	"O" RING	1
06A23493	SEAL, Shroud tube	8

SERVICE KIT SECTION (CONT.)
CYLINDER, PISTON AND RING ASSEMBLY

PART NO.	PART NAME	Qty.
05K31510-Y	KIT - CYLINDER, PISTON, AND RING ASSEMBLY	1
14D23914	PISTON, Compression ratio, 9.00:1	1
LW-14078	PIN, Piston	1
72198	PLUG, Piston pin	2
74241	RING, Piston, compression, 5.125 bore	2
14H29884	RING ASSEMBLY, Piston, oil regulating, expander type	1
71481	RING, Oil seal, 4-27/32 ID x 3/32 diameter section	1
LW-18661	SEAL, Shroud tube	2
70310	SEAL, Shroud tube	2
06B26669	GASKET, Rocker box cover (silicone)	1
71195	CONTAINER	1
77611	GASKET, Exhaust flange	1
06C29105-Y	O-RING, Silicone (Cub Crafters P/N SP50208-001)	1
LW-12272	LOCKPLATE, shroud tube	1
16G30080-0302	CYLINDER HEAD & VALVE ASSY (Parallel Valve)	1
76943	GUIDE, valve, intake	1
72057	SEAT, valve-intake	1
16R22126	GUIDE, valve, exhaust (ni-resist)	1
72058	SEAT, valve, exhaust	1
66610	BUSHING, rocker shaft	4
66796	INSERT, Spark plug, 18 x 1.5 MM	2
31C-12	STUD, 5/16-18 x 1-1/2 long	2
25C-8	STUD, 1/4-20 x 1.00 long	1
STD-1353	INSERT, No. 10-24 UNC x 3/8 long	1
17A29467	VALVE, intake (rotator type)	1
17B23936	VALVE, exhaust	1
17D29060	SPRING, valve - outer (orange)	2
17D29055	SPRING, valve - auxiliary (orange)	2
69532	SEAT, valve spring, upper intake	1
LW-16475	SEAT, valve spring, uppr.exhaust	1

SERVICE KIT SECTION (CONT.)

CYLINDER, PISTON AND RING ASSEMBLY (CONT.)

PART NO.	PART NAME	Qty.
65441	SEAT, valve spring, lower intake	1
LW-13323	SEAT, valve spring, lower exhaust	1
72050	KEY, valve, intake	2
17C21191	KEY, valve, exhaust	2
62388	CAP, valve stem	1
17C19386	CAP, valve stem, exhaust (rotator)	1
MS20823-6D	ELBOW, 45 degree, 3/8 flared tube	1
06A23493	SEAL, shroud tube	2
1102	PLUG, 1/8 pipe	2
SSP-115	STICKER	1
SSP-299	TAG, Use of Piston Pin Plugs	1

CRANKCASE ASSEMBLY AND THRU-STUD KIT (ROLLER TAPPET ENGINES)

PART NO.	PART NAME	Qty.
11B19524-5-S	KIT - CRANKCASE ASSEMBLY AND THRU-STUD	1
11B19524-5	CRANKCASE ASSEMBLY (Roller lifter)	1
AN565B1032H4	SETSCREW, #10-32 x 1/4 lg	1
AN565B1032H5	SETSCREW, #10-32 x 5/16 lg	1
STD-2090	NUT, 1/2-20, plain	2
31C-14	STUD, 5/16-18 x 1-3/4 lg	4
31C-16	STUD, 5/16-18 x 2.00 lg	4
74887	SPACER, 33/64 I.D. x 7/8 O.D. x 3/8 thick	2
76220	STUD, 1/2-20 x 10-45/64 long	4

NUMERICAL INDEX

PART NO.	PART NAME	PAGE NO.
01K28983	BUSHING	17
01L21418	WASHER	3
01L23459	WASHER	21
05L31556-Y	LEVER	39
06A23493	SEAL	21
06B26669	GASKET	25
06B29860	GASKET	37
06E19769-0.63	GASKET	37
06E19769-1.25	GASKET	7
1.334-D-H-22	IGNITION	43
1028-B	BALL	7
1102	PLUG	5
1102	PLUG	9
1102	PLUG	19
1102	PLUG	31
1102	PLUG	39
05K19423-S	IMPELLER KIT	33
11B19524-5	CRANKCASE ASSY	5
11B20161-3SL	CRANKCASE ASSY	5
13B47121	C'SHAFT ASSY'	9
13B47219	C'SHAFT ASSY	9
13S19646	GEAR	9
14D23914	PISTON	17
14H29884	RING ASSEMBLY	17
14S23890	BOLT	17
14W21696	ROLLER	9
15B21319	SOCKET	21
15B26066	PLUNGER ASSY	21
15F28835-28	ROD ASSEMBLY	21
15F28835-29	ROD ASSEMBLY	21
15F28835-30	ROD ASSEMBLY	21
15F28835-31	ROD ASSEMBLY	21
15F28835-32	ROD ASSEMBLY	21
15F28835-33	ROD ASSEMBLY	21
15F28835-34	ROD ASSEMBLY	21
15G23461	SHROUD TUBE	21
15M23452	CAMSHAFT ASSY	11

PART NO.	PART NAME	PAGE NO.
15M23456	CAMSHAFT ASSY	11
16A30080-03	CYL & HEAD ASSY	19
16R22126	GUIDE	19
17A23938	VALVE	21
17B23936	VALVE	21
17C19386	CAP	21
17C21191	KEY	21
17D29055	SPRING	21
17D29060	SPRING	21
17F19357	ROCKER ASSY	23
17J28868	COVER	25
18A26093	BEARING	7
18D26098	BEARING	7
18M23887	BEARING	17
18M26105	BEARING	17
21A26242-37	ASSEMBLY	31
23D26777	PLUNGER	11
25C-8	STUD	19
31A22104	STARTER	47
31C-12	STUD	5
31C-12	STUD	19
31C-12	STUD	31
31C-13	STUD	5
31C-17	STUD	5
31CD-17	STUD	31
38-13	STUD	5
38-22	STUD	5
383-B	NUT	23
38D-17	STUD	5
50-15	STUD	5
51F28531	BODY	33
53E22144	VALVE ASSEMBLY	37
54B28395	BASE ASSEMBLY	37
54D28353	OIL FILTER	37
56C23674-Y	GAGE ASSEMBLY	29
60009	KEY	21
60096	GASKET	35

PART NO.	PART NAME	PAGE NO.
60803	STRAP	13
60803	STRAP	15
61084	SPRING	7
61174	SHAFT	33
61J29118-Y	INJECTOR	39
62417	PLUG	37
62B26931	FUEL PUMP	35
63B29119-Y	MANIFOLD	39
63B29120-Y	MANIFOLD ASSY	39
63C26450	NOZZLE	39
65441	SEAT	21
66224	GASKET	39
66610	BUSHING	19
66796	INSERT	19
66M21195	CLAMP	43
68668	SPRING	7
68759	TUBE ASSEMBLY	25
68760	TUBE ASSEMBLY	25
68761	TUBE ASSEMBLY	25
69796	DOWEL	5
70310	SEAL	21
70455	GASKET	3
71481	RING	23
71611	RETAINER	25
71629	HOOK	25
71903-A	BUSHING	9
71907	WASHER	9
72053	GASKET	3
72057	SEAT	19
72058	SEAT	19
72059	GASKET	29
72075	SEAL	7
72091	RING	7
72155-S	BUSHING	9
72158	BUSHING	5
72198	PLUG	17
72378	COVER	3
72797	ROLLER	9

PART NO.	PART NAME	PAGE NO.
73136	BRACKET	40
73249	WASHER	3
73250	WASHER	3
73251	WASHER	3
73252	WASHER	3
73772	NOZZLE ASSY	5
73810	BUSHING	9
73818	GASKET	31
74065	RING	29
74241	RING	17
74637	BUSHING	23
74711	PLUG	9
74887	SPACER	23
74996	GEAR ASSEMBLY	11
75009	BRACKET	39
75061	BOLT	17
75072	GEAR ASSEMBLY	11
75154	STUD	5
75444	ADAPTER ASSY	27
75656-S	BUSHING	9
75657-S	BUSHING	9
75739	NIPPLE	40
75767	TUBE	29
76118	SPACER	11
76119	SHIELD	31
76220	STUD	13
76220	STUD	15
76943	GUIDE	19
77450	CONN ROD ASSY	17
77467	SPRING	7
77504	GASKET	40
77611	GASKET	19
77611	GASKET	45
77808	VALVE ASSEMBLY	7
77874	GEAR ASSEMBLY	3
77875	GEAR	3
AN4-30A	BOLT	43
AN565B1032H5	SET SCREW	3

PART NO.	PART NAME	PAGE NO.
AN6-34A	BOLT	13
AN6-34A	BOLT	15
AN791-2	ELBOW	39
AN816-8D	NIPPLE	37
AN915-1D	ELBOW	27
C81262-19	LINK	39
LRT23381	BODY ASSEMBLY	7
LW-10077	SEAT	21
LW-11713	SPRING	7
LW-11750	ROD ASSEMBLY	17
LW-12098-0-140	TUBE ASSEMBLY	39
LW-12098-0-210	TUBE ASSEMBLY	39
LW-12186	NUT	17
LW-12272	LOCKPLATE	21
LW-12681	GASKET	43
LW-12892	THRUST BUTTON	23
LW-13323	SEAT	21
LW-13353	GASKET	40
LW-13790	SHAFT	23
LW-13792	SEAL	7
LW-13793	STUD	5
LW-13796	SHAFT	11
LW-13896	PLUG	3
LW-14021	SHAFT	3
LW-14078	PIN	17
LW-14820	RING	9
LW-14995	SPRING	21
LW-15592-5-04	CLAMP	25
LW-15839	BAFFLE ASSY	25
LW-16266-10-13	CLAMP	39
LW-16266-10-75	CLAMP	39
LW-16475	SEAT	21
LW-16838	BAFFLE ASSY	25
LW-18085	SPRING	7
LW-18109	IMPELLER	33
LW-18110	IMPELLER ASSY	33
LW-18639	LOCKPLATE	9
LW-19221	COUNTERWEIGHT	9

PART NO.	PART NAME	PAGE NO.
LW-19227	C'WEIGHT ASSY	9
LW-25-0.50	BOLT	39
LW-25-0.94	BOLT	33
LW-25-0.94	BOLT	40
LW-25-1.00	BOLT	27
LW-25-1.00	BOLT	37
LW-25-1.13	BOLT	13
LW-25-1.13	BOLT	15
LW-25-1.13	BOLT	33
LW-25-1.25	BOLT	40
LW-25-1.44	BOLT	33
LW-25-1.50	BOLT	13
LW-25-1.50	BOLT	15
LW-25-1.75	BOLT	13
LW-25-1.75	BOLT	15
LW-25H0.63	BOLT	40
LW-25H0.63	BOLT	43
LW-25S1.50	BOLT	13
LW-25S1.50	BOLT	15
LW-31-0.94	BOLT	47
LW-31H0.88	BOLT	11
MS20822-4	ELBOW	39
MS20823-6D	ELBOW	19
MS20823-8D	ELBOW	37
MS21045-3	NUT	40
MS24693-C27	SCREW	40
MS35333-46	WASHER	27
MS35489-20X	GROMMET	25
NAS1149F0632P	WASHER	13
NAS1149F0632P	WASHER	15
NAS1149F0963P	WASHER	27
O5L31557-Y	LEVER	39
O7C29123-CT-Y	CLAMP	27
SC50362-001	FLANGE	27
SK50362-001	PIPE	27
SK50362-002	PIPE	27
SK50362-003	PIPE	27
SK50362-004	PIPE	27

PART NO.	PART NAME	PAGE NO.
SK50363-001	MOUNTING LUG	27
SK50369-001	SUPPORT	27
SK50371-001	BRACKET	27
SK50375-001	SUPPORT	27
SK50380-001	MANIFOLD ASSY	27
SK50381-001	GASKET	40
SK51368-001	BUSHING	43
SP50208-001	O-RING	27
SP56202-102	FITTING	37
SP56204-001	FITTING	27
STD-8	WASHER	13
STD-8	WASHER	15
STD-8	WASHER	27
STD-8	WASHER	33
STD-8	WASHER	37
STD-8	WASHER	40
STD-8	WASHER	43
STD-28	WASHER	40
STD-33	WASHER	13
STD-33	WASHER	15
STD-33	WASHER	35
STD-35	WASHER	3
STD-35	WASHER	19
STD-35	WASHER	33
STD-35	WASHER	39
STD-35	WASHER	45
STD-71	PLUG	37
STD-82	SCREW	39
STD-160	WASHER	13
STD-160	WASHER	15
STD-160	WASHER	27
STD-160	WASHER	33
STD-160	WASHER	37
STD-160	WASHER	39
STD-160	WASHER	40
STD-251	WASHER	39
STD-425	WASHER	40
STD-425	WASHER	43

PART NO.	PART NAME	PAGE NO.
STD-475	WASHER	3
STD-475	WASHER	19
STD-475	WASHER	39
STD-475	WASHER	43
STD-475	WASHER	45
STD-475	WASHER	47
STD-514	DOWEL	5
STD-557	DOWEL	5
STD-596	NUT	13
STD-596	NUT	15
STD-670	LOCKNUT	39
STD-673	NUT	43
STD-678	WASHER	13
STD-678	WASHER	15
STD-684	NIPPLE	25
STD-696	WASHER	40
STD-784	PLUG	31
STD-860	SCREW	39
STD-872	NUT	13
STD-872	NUT	15
STD-1065	DOWEL	9
STD-1211	PLUG	9
STD-1339	PLUG	5
STD-1353	INSERT	19
STD-1410	NUT	3
STD-1410	NUT	19
STD-1410	NUT	39
STD-1410	NUT	43
STD-1410	NUT	45
STD-1410	NUT	47
STD-1411	NUT	13
STD-1411	NUT	15
STD-1411	NUT	21
STD-1411	NUT	40
STD-1420	NUT	33
STD-1623	INSERT	5
STD-1650	BOLT	40
STD-1792	HOSE	27

PART NO.	PART NAME	PAGE NO.
STD-1821	HOSE	25
STD-1882	SCREW	35
STD-1925	SCREW	25
STD-2090	NUT	23
STD-2168	NUT	11

PART NO.	PART NAME	PAGE NO.
STD-2246	BOLT	9
STD-2249	NUT	13
STD-2249	NUT	15
STD-2329	BOLT	39